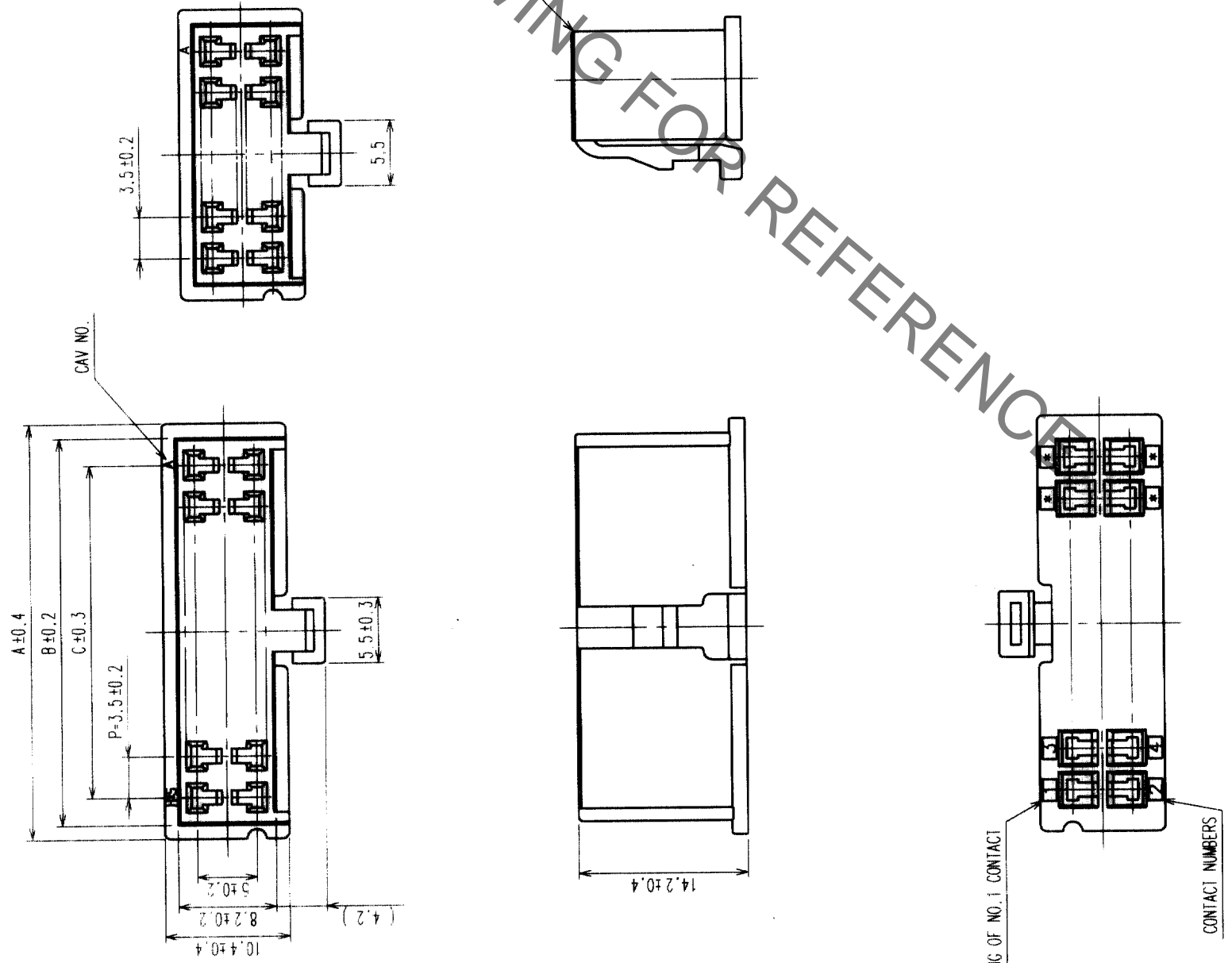


Feb.1.2021 Copyright 2021 HIROSE ELECTRIC CO., LTD. All Rights Reserved.
 In case of consideration for using Automotive equipment / device which demand high reliability, kindly contact our sales window correspondents.



CODE.	PART. NO.	A	B	C
CL547-0074-1	MDF6-4DS-3.5C	10.5	8.1	3.5
CL547-0075-4	MDF6-6DS-3.5C	14.0	11.6	7.0
CL547-0076-7	MDF6-8DS-3.5C	17.5	15.1	10.5
CL547-0077-0	MDF6-10DS-3.5C	21.0	18.6	14.0
CL547-0078-2	MDF6-12DS-3.5C	24.5	22.1	17.5
CL547-0079-5	MDF6-14DS-3.5C	28.0	25.6	21.0
CL547-0080-4	MDF6-16DS-3.5C	31.5	29.1	24.5
CL547-0081-7	MDF6-18DS-3.5C	35.0	32.6	28.0
CL547-0082-0	MDF6-20DS-3.5C	38.5	36.1	31.5

HRS DRAWING FOR REFERENCE

COUNT	DESCRIPTION OF REVISIONS	BY	CHKD	DATE	COUNT	DESCRIPTION OF REVISIONS	BY	CHKD	DATE
△					△				
△					△				
△					△				

NO.	MATERIAL	FINISH, REMARKS	NO.	POLYAMIDE	NATURAL (WHITE) UL94V-0
CODE NO. (OLD)	CL		DESIGNED	S. Oho	
			DRAWN	M. KURAMASHI	
			CHECKED	T. Miyazaki	
			APPROVED	T. Miyazaki	
			RELEASED		
			DATE	03.05.27	
			DATE	03.05.28	
			DATE	03.05.28	
DRAWING NO.	EDC3-162356-01		PART NO.	MDF6-*DS-3.5C	
SCALE	2 : 1		CODE NO.	CL547	
UNITS	mm				

TO			
----	--	--	--

Mouser Electronics

Authorized Distributor

Click to View Pricing, Inventory, Delivery & Lifecycle Information:

[Hirose Electric:](#)

[MDF6-16DS-3.5C](#)