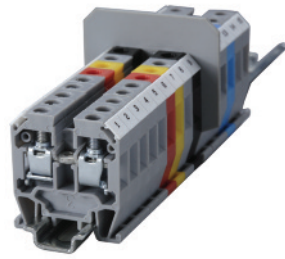


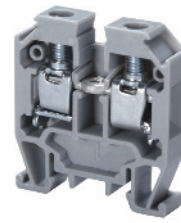
Mini Feed-Through 15mm

For wire-to-wire connecting in control, automation, instrumentation and power distribution applications.

Altech "miniature" terminal blocks offer tremendous space advantage as demanded by certain wiring configurations.



CMT4



CGMT4



Terminal Width	6 mm			6 mm		
Height x Length	29 x 27 mm			28.5 x 27 mm		
Stripping Length	9 mm			9 mm		
Insulation Material	Polyamide 6.6			Polyamide 6.6		
Type of Connection	2 screw clamps & 1 tapped hole for cross connection			2 screw clamps		
Approvals						
Wire Range	22-10 AWG	0.2-4 sq.mm	22-10 AWG	22-10 AWG	0.2-4 sq.mm	22-10 AWG
Voltage Rating	300 V	500 V	300 V		400 V	
Current Rating	35 A	32 A	35 A		32 A	
Torque	7 lb-in	0.5 Nm	7 lb-in	7 lb-in	0.5 Nm	7 lb-in

Other Approvals AEx eII Ex eII U

Cat. No.	Std. Pk.	Cat. No.	Std. Pk.
----------	----------	----------	----------

Terminal Block		CMT4	100	CGMT4	50
End Plate		EPCMT4	50		
Isolation Partition		PPCMT4	50		
DIN Rail for ordering information refer to pages 90-91					
End Stop for ordering information refer to page 92		CA602	100		
Internal Jumper	2 pole 3 pole 4 pole 10 pole	CA727/2 CA727/3 CA727/4 CA727/10	100 100 100 10		
Insulated Internal Jumper	2 pole 3 pole 4 pole 10 pole	CA747/2 CA747/3 CA747/4 CA747/10	100 100 100 10		
Current Bars	2 pole 3 pole 4 pole 10 pole 10 pole (breakable) 100 pole	CA703/1 CA704/1 CA705/1 CA732/10 CA732/10-A CA732/100	100 100 100 100 100 10		
Shorting Sleeve & Screw		CA607/S/Q	100		
External Jumper	2 pole 3 pole 4 pole 10 pole	CA714/2 CA714/3 CA714/4 CA714/10	100 100 100 20		
Marking Tags		MT2	100	MT2	100

COLOR BLOCKS
(other than standard grey)

When ordering please add color suffix to Cat. No.
Example for color Red: **Cat.No./R**

Color	Ordering Suffix
Red	R
Yellow	Y
Blue	BU
Green	G
Orange	O
Beige	BG
Dark Brown	DB
Black	BL
White	W

Consult Altech for availability.

Mouser Electronics

Authorized Distributor

Click to View Pricing, Inventory, Delivery & Lifecycle Information:

[Altech:](#)

[CMT4](#) [CGMT4](#)