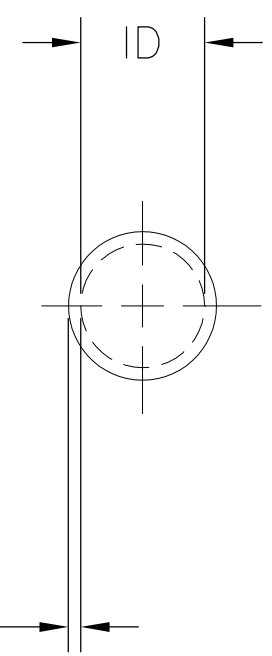
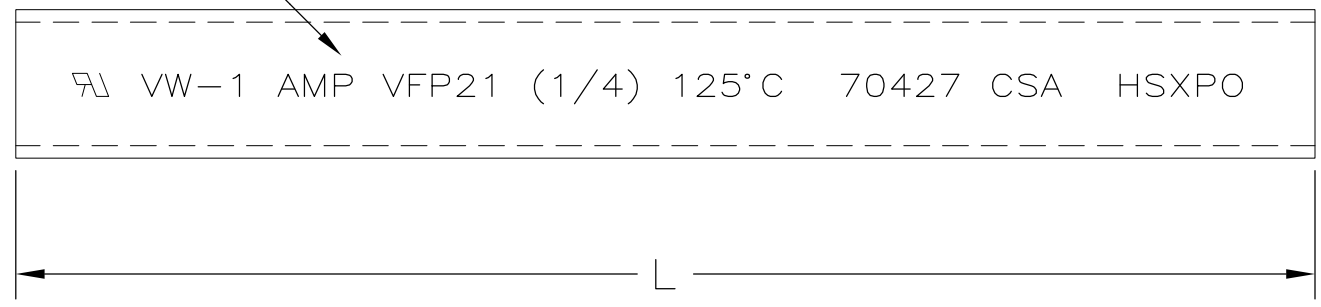


6.35 [.250] MINIMUM EXPANDED
 3.18 [.125] MAXIMUM RECOVERED



| REVISIONS | | |
|-----------|----------------------------|------------|
| LTR | DESCRIPTION | DATE |
| Y | REVISED PER DCR NO R060226 | 10/13/2006 |
| Y1 | REVISED PER ECO-09-021510 | 12SEP09 |

0.64 [.025] NOMINAL WALL THICKNESS FULLY RECOVERED

1. TUBING VFP21 MARKED AS SHOWN IN WHITE CHARACTERS ON SURFACE INDICATED

2. TUBING VFP21 IS UL RECOGNIZED, IS RATED 125°C [257°F] AND MEETS VW-1 FLAME TEST.

3. TUBING VFP21 IS CSA CERTIFIED AND MEETS VW-1 FLAME TEST.

4. TUBING FP21 IS UNMARKED AND MEETS REQUIREMENTS OF AMS-DTL-23053/5-106-0

5. WEIGHT PER LINEAR FOOT/304.8 mm:
 2.54 g/.006 lbs.

6. MATERIAL: BLACK POLYOLEFIN

7. OBSOLETE PARTS: OBSOLETE CIS STREAMLINING PER D.RENAUD/D.SINISI

| | | | | |
|---|---------|-------|----------------------------|-------------|
| | 4 | 4 | 60.96 m [200 ft] MINIMUM | 2-603326-7 |
| 1 | | 2 3 | 60.96 m [200 ft] MINIMUM | 2-603326-6 |
| 7 | 4 | 4 | 31.75 ± 1.52 [1.25 ± .06] | 2-603326-4 |
| 1 | | 2 3 | 30.48 m [100 ft] MINIMUM | 2-603326-2 |
| | 4 | 4 | 30.48 m [100 ft] MINIMUM | 2-603326-1 |
| 4 | | 4 | 1.22 m [4 ft] MINIMUM | 1-603326-1 |
| | 1 | 2 3 | 25.4 ± 1.52 [1.00 ± .06] | 603326-7 |
| 1 | | 2 3 | 304.8 ± 3.05 [12.00 ± .12] | 603326-4 |
| | 1 | 2 3 | 1.22 m [4 ft] MINIMUM | 603326-1 |
| | MARKING | NOTES | LENGTH L | PART NUMBER |

SPECIFICATION CONTROL DRAWING

| | | | | |
|---|------------------|---------------------|---|---|
| UNLESS OTHERWISE SPECIFIED DIMENSIONS ARE IN mm. INCH DIMENSIONS ARE IN BRACKETS. DECIMALS .XX ± .01 [.0004 in] .X ± .1 [.004 in] ANGLES .X ± 0.5 DEG | DRAWN UNGUYEN | DATE 10/13/2006 | Tyco Electronics Corporation 300 Constitution Drive Menlo Park, CA, USA 94025 | |
| | RPN | CAD NAME R060226 | | TITLE AMPSULATION VFP21 AND FP21 1/4 INCH ID, BLACK |
| THIRD ANGLE PROJECTION | | SIZE B | CODE IDENT. NO. 06090 | DWG. NO. C-603326 |
| DO NOT SCALE THIS DRAWING | | | SHEET 1 OF 1 | |

Mouser Electronics

Authorized Distributor

Click to View Pricing, Inventory, Delivery & Lifecycle Information:

[TE Connectivity:](#)

[1-603326-1](#)