

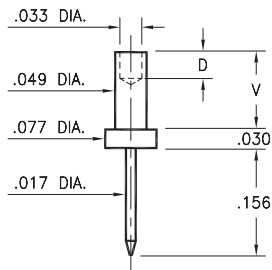
MALE PCB PINS

PRINTED CIRCUIT PINS

3116

3116-X-00-XX-00-00-08-0

Swage mount in .052 hole

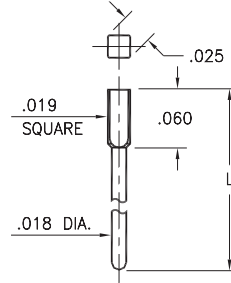


Basic Part Number	Board Thickness	Length V	Depth D
3116-1	.031	.051	.035
3116-2	.062	.082	.062
3116-3	.094	.113	.062
3116-4	.125	.145	.062

X435

X435-X-05-XX-00-00-03-0

Square press-fit in .022 plated through-hole

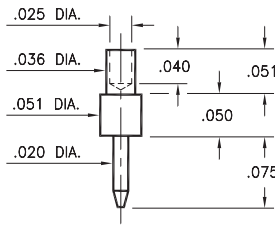


Basic Part Number	Length L
5435-0	.303
5435-1	.200
5435-2	.413
6435-0	.280

3135

3135-1-00-XX-00-00-08-0

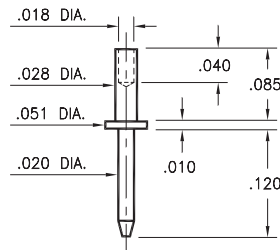
Swage mount in .040 hole
For .031 thick board



3210

3210-2-00-XX-00-00-08-0

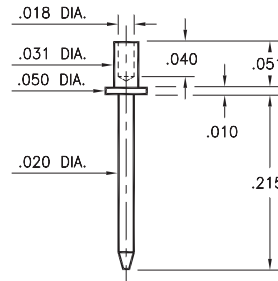
Swage mount in .031 hole
For .062 thick board



3129

3129-1-00-XX-00-00-08-0

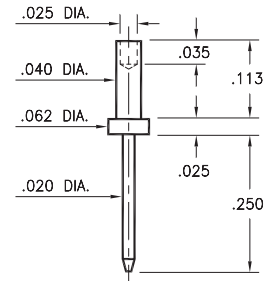
Swage mount in .035 hole
For .031 thick board



3147

3147-3-00-XX-00-00-08-0

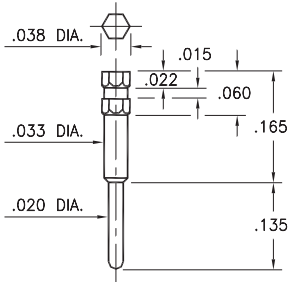
Swage mount in .043 hole
For .094 thick board



4366

4366-0-00-XX-00-00-03-0

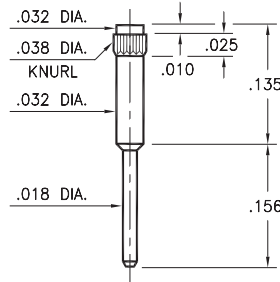
Hex press-fit in .034 plated through-hole



1267

1267-0-00-XX-00-00-03-0

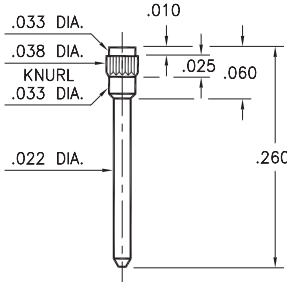
Press-fit in .035 mounting hole



7827

7827-0-00-XX-00-00-03-0

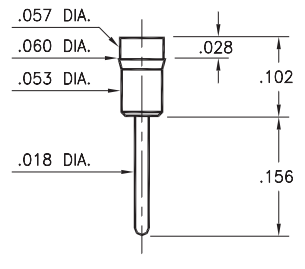
Press-fit in .035 mounting hole



1130

1130-0-00-XX-00-00-03-0

Press-fit in .057 mounting hole
Pin material is Phosphor Bronze 544 (B2)



SPECIFICATIONS:

Pin Material: Brass Alloy 360, 1/2 Hard
(Except where noted)

Dimensions: Inches

Tolerances On: Lengths: $\pm .005$
Diameters: $\pm .002$
Angles: $\pm 2^\circ$



ORDER CODE: XXXX - X - 0X - XX - 00 - 00 - XX - 0

BASIC PART #

SPECIFY PIN FINISH:

- 01 200 μ m TIN/LEAD OVER NICKEL
- ◆ 80 200 μ m TIN OVER NICKEL (RoHS)
- ◆ 15 10 μ m GOLD OVER NICKEL (RoHS)
- ◆ 21 20 μ m GOLD OVER NICKEL (RoHS)
- ◆ 34 50 μ m GOLD OVER NICKEL (RoHS)



Mouser Electronics

Authorized Distributor

Click to View Pricing, Inventory, Delivery & Lifecycle Information:

Mill-Max:

[5435-0-05-01-00-00-03-0](#) [3210-2-00-01-00-00-08-0](#) [3147-3-00-01-00-00-08-0](#) [3135-1-00-01-00-00-08-0](#) [3129-1-00-01-00-00-08-0](#) [3116-4-00-01-00-00-08-0](#) [3116-3-00-01-00-00-08-0](#) [3116-2-00-01-00-00-08-0](#) [3116-1-00-01-00-00-08-0](#) [3210-2-00-21-00-00-08-0](#) [1267-0-00-01-00-00-03-0](#) [1130-0-00-01-00-00-03-0](#) [3147-3-00-80-00-00-08-0](#) [3135-1-00-80-00-00-08-0](#) [3129-1-00-80-00-00-08-0](#) [3116-4-00-80-00-00-08-0](#) [3116-3-00-80-00-00-08-0](#) [3116-2-00-80-00-00-08-0](#) [3116-1-00-80-00-00-08-0](#) [1130-0-00-15-00-00-03-0](#) [1130-0-00-21-00-00-03-0](#) [1130-0-00-34-00-00-03-0](#) [1267-0-00-15-00-00-03-0](#) [1267-0-00-21-00-00-03-0](#) [1267-0-00-34-00-00-03-0](#) [3116-1-00-15-00-00-08-0](#) [3116-1-00-21-00-00-08-0](#) [3116-1-00-34-00-00-08-0](#) [3116-2-00-15-00-00-08-0](#) [3116-2-00-21-00-00-08-0](#) [3116-2-00-34-00-00-08-0](#) [3116-3-00-15-00-00-08-0](#) [3116-3-00-21-00-00-08-0](#) [3116-3-00-34-00-00-08-0](#) [3116-4-00-15-00-00-08-0](#) [3116-4-00-21-00-00-08-0](#) [3116-4-00-34-00-00-08-0](#) [3129-1-00-15-00-00-08-0](#) [3129-1-00-21-00-00-08-0](#) [3129-1-00-34-00-00-08-0](#) [3135-1-00-21-00-00-08-0](#) [3135-1-00-34-00-00-08-0](#) [3147-3-00-15-00-00-08-0](#) [3147-3-00-34-00-00-08-0](#) [3210-2-00-15-00-00-08-0](#) [5435-1-05-21-00-00-03-0](#) [4366-0-00-00-00-00-03-0](#) [3116-3-00-00-00-00-08-0](#) [3116-2-00-00-00-00-08-0](#) [7827-0-00-00-00-00-03-0](#) [5435-0-05-00-00-00-03-0](#) [3210-2-00-00-00-00-08-0](#) [1130-0-00-00-00-00-03-0](#) [3116-1-00-00-00-00-08-0](#) [3147-3-00-00-00-00-08-0](#) [3129-1-00-00-00-00-08-0](#) [3135-1-00-00-00-00-08-0](#) [3116-4-00-00-00-00-08-0](#)