

5

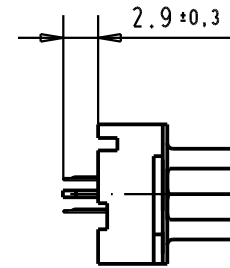
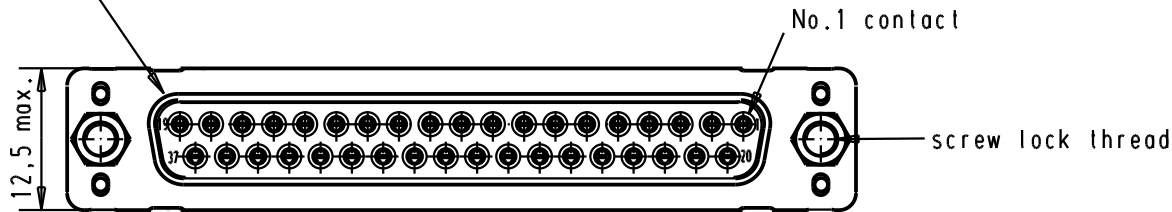
4

3

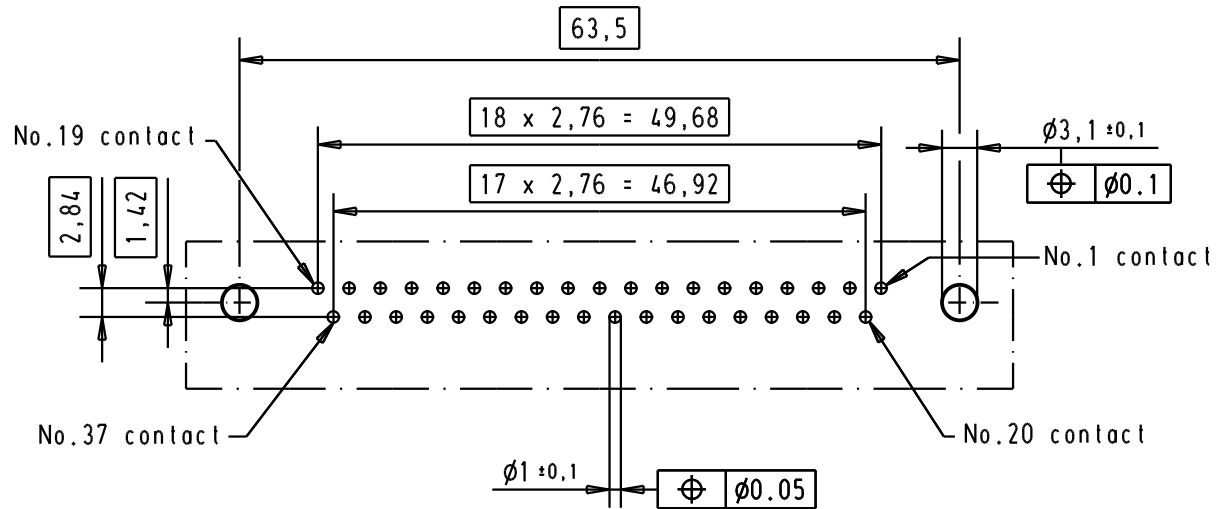
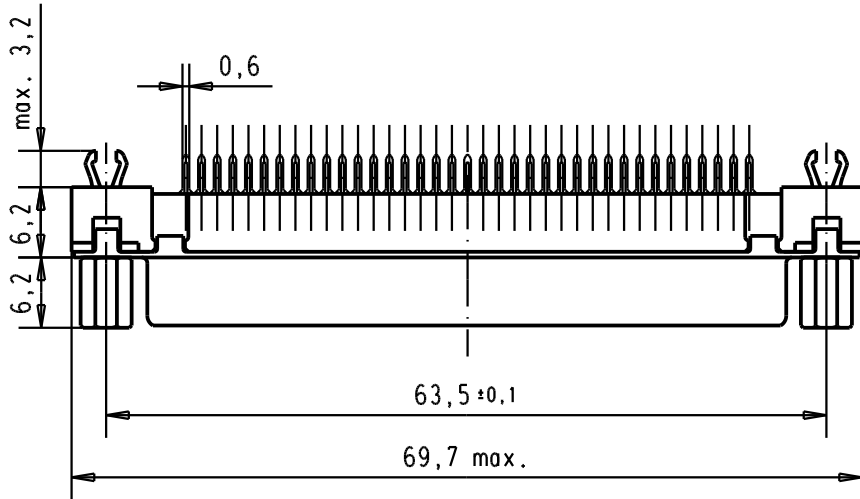
2

1

Mating face according to : MIL-C24308 / DIN 41652 / CECC 75301-802





Printed board layout
component side
PTH's plating = tin lead



Connector retention and insertion forces on the PCB = 25 / 80 newtons.

A

09 66 451 3533	M3	1								 All Dim. in mm Orig. Size DIN A 4	D-sub, 37 poles, female, straight, with solder pins 2.9, screw lock and grounding board lock	Maßstab/ Scale 1,5:1
09 66 451 6533	M3	2				Detail.	07-FEB-02	JB				
09 66 451 7533	M3	3				Insp.						
09 66 451 3513	4-40 UNC	1				Stand.						
09 66 451 6513	4-40 UNC	2	31892	05/05/04	JH	HARTING EURL F-95972 Paris				TB 09 66 451 x5x3	Blatt/ Page 1 /	
09 66 451 7513	4-40 UNC	3	29746	07-FEB-02	JB							
Part number	Screw lock thread	Performance level	Mod.	Dat.	Name				Sub.			

Mouser Electronics

Authorized Distributor

Click to View Pricing, Inventory, Delivery & Lifecycle Information:

[HARTING:](#)

[09664517513](#) [09664516513](#)