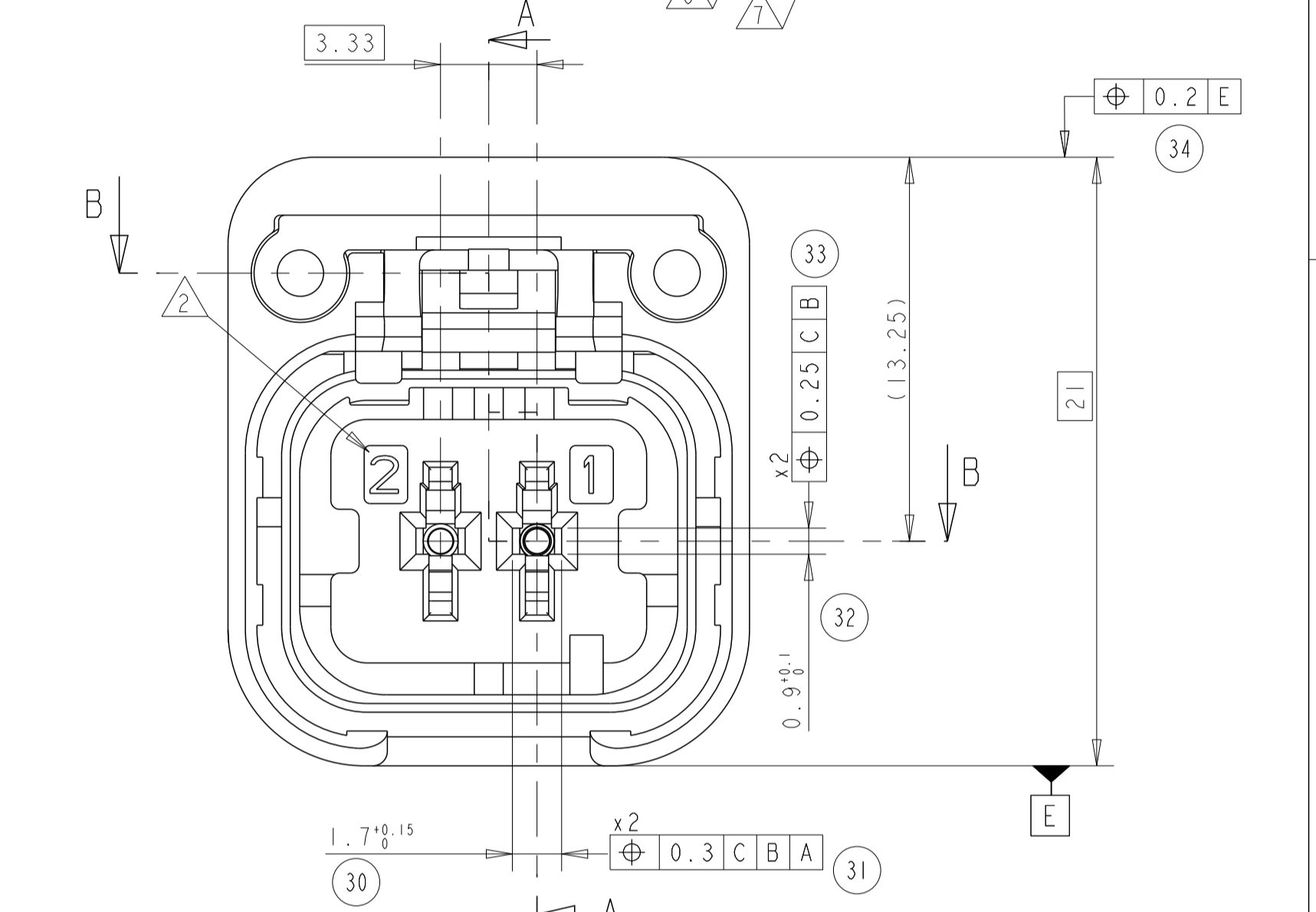
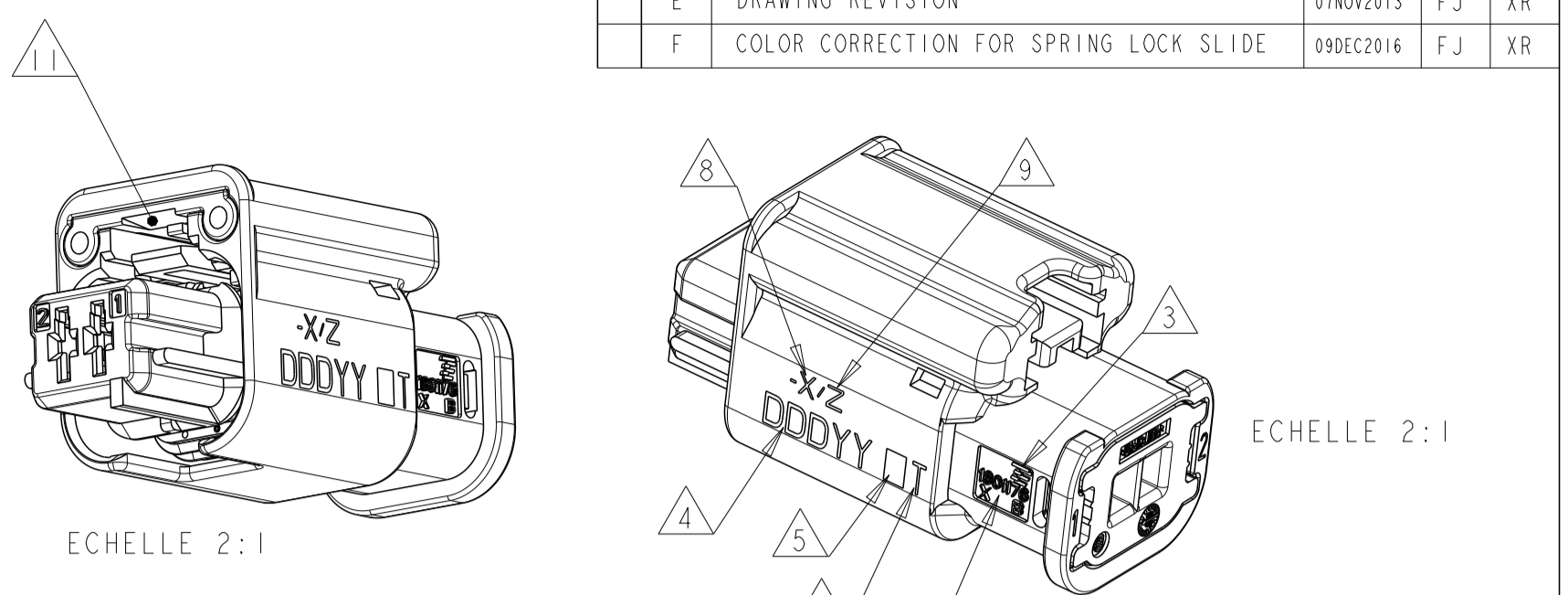
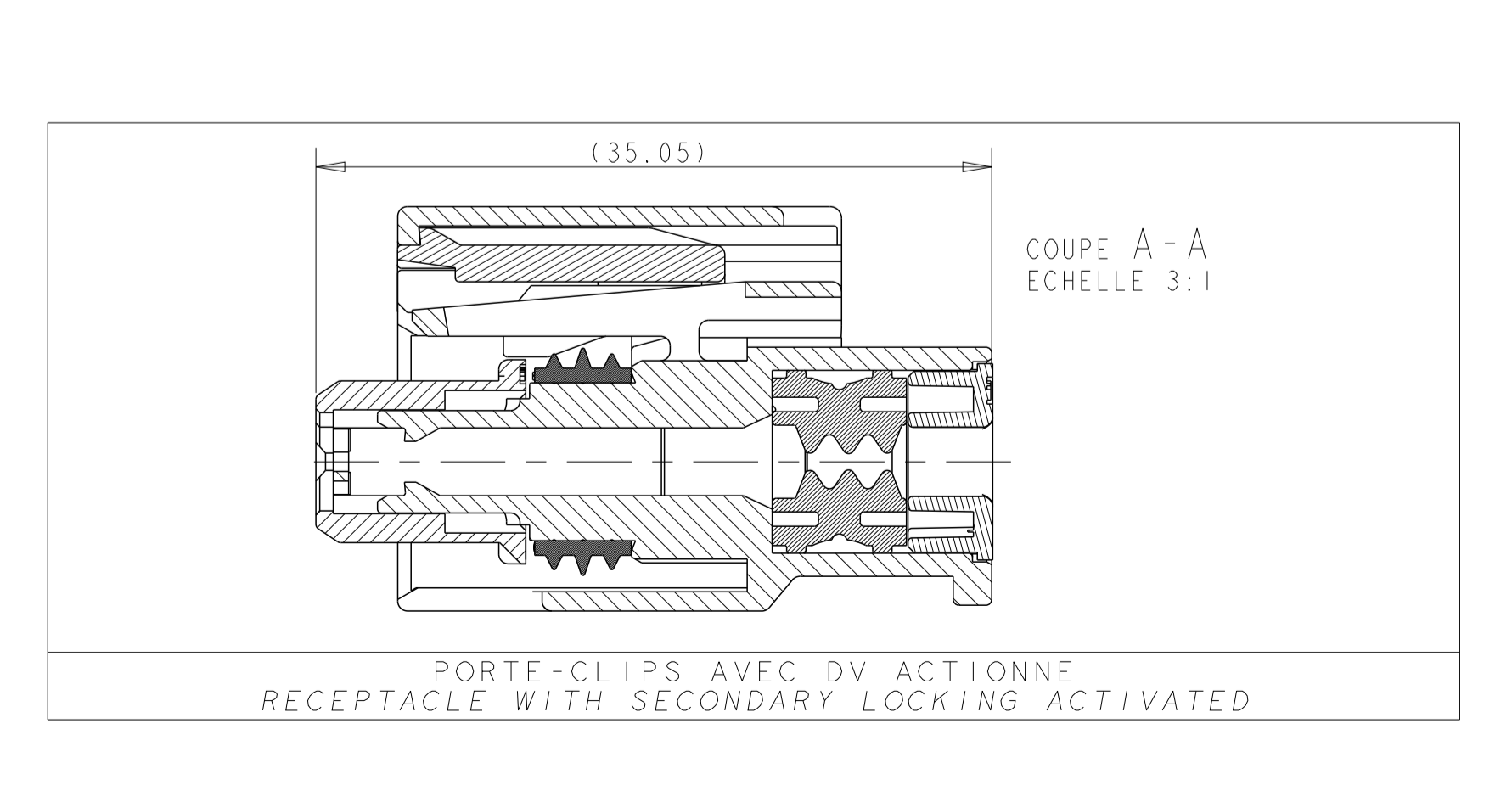
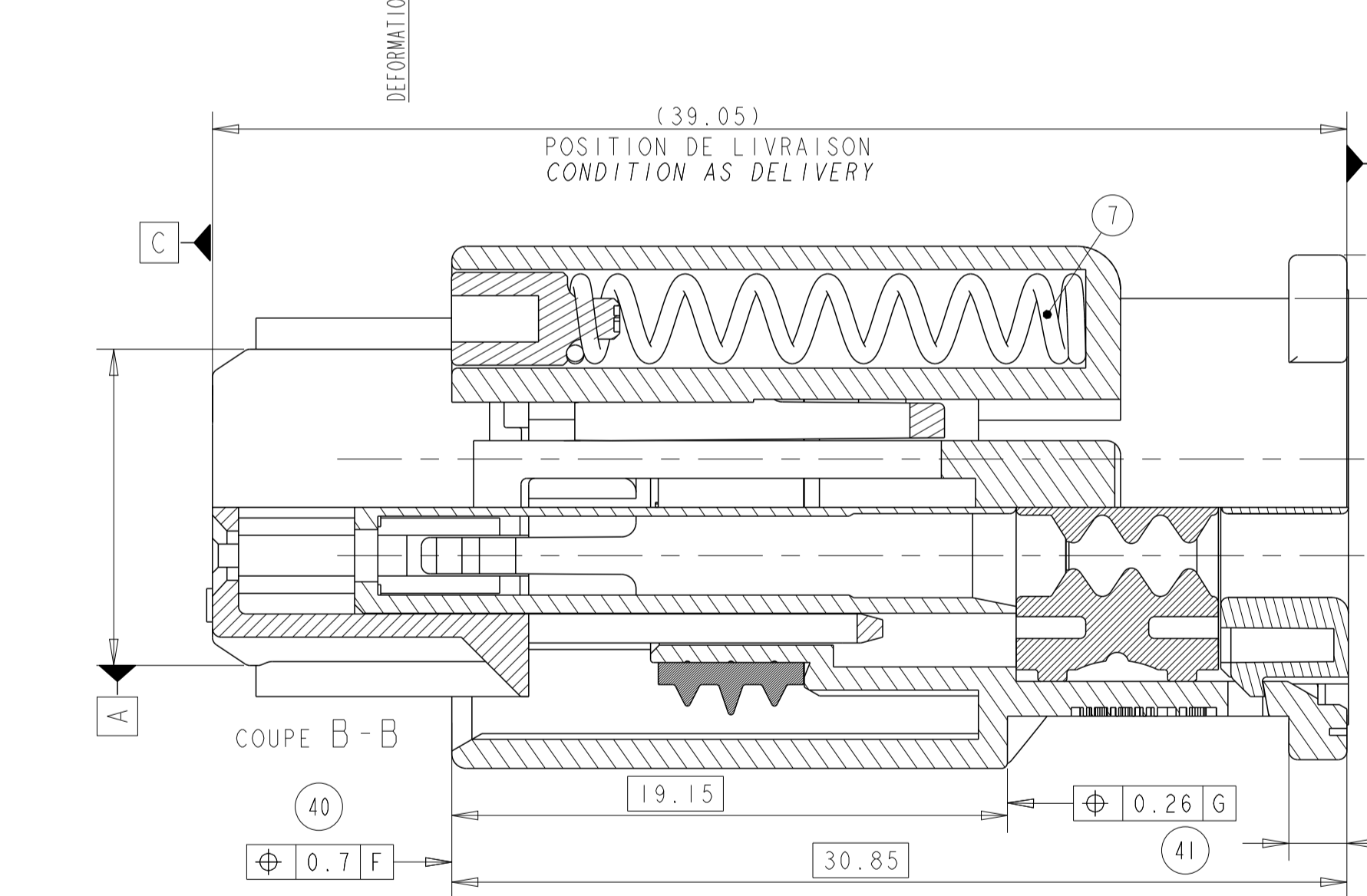
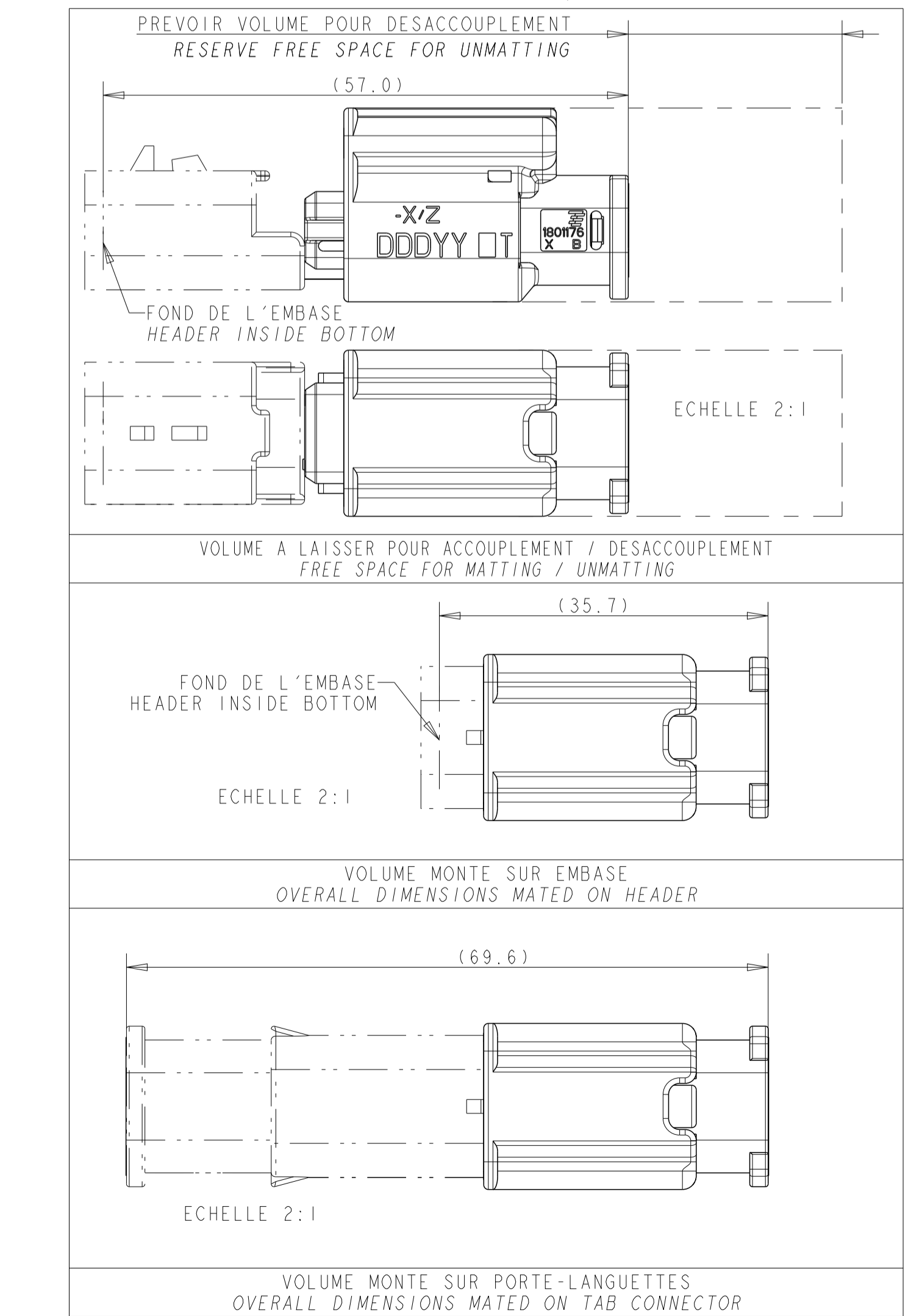
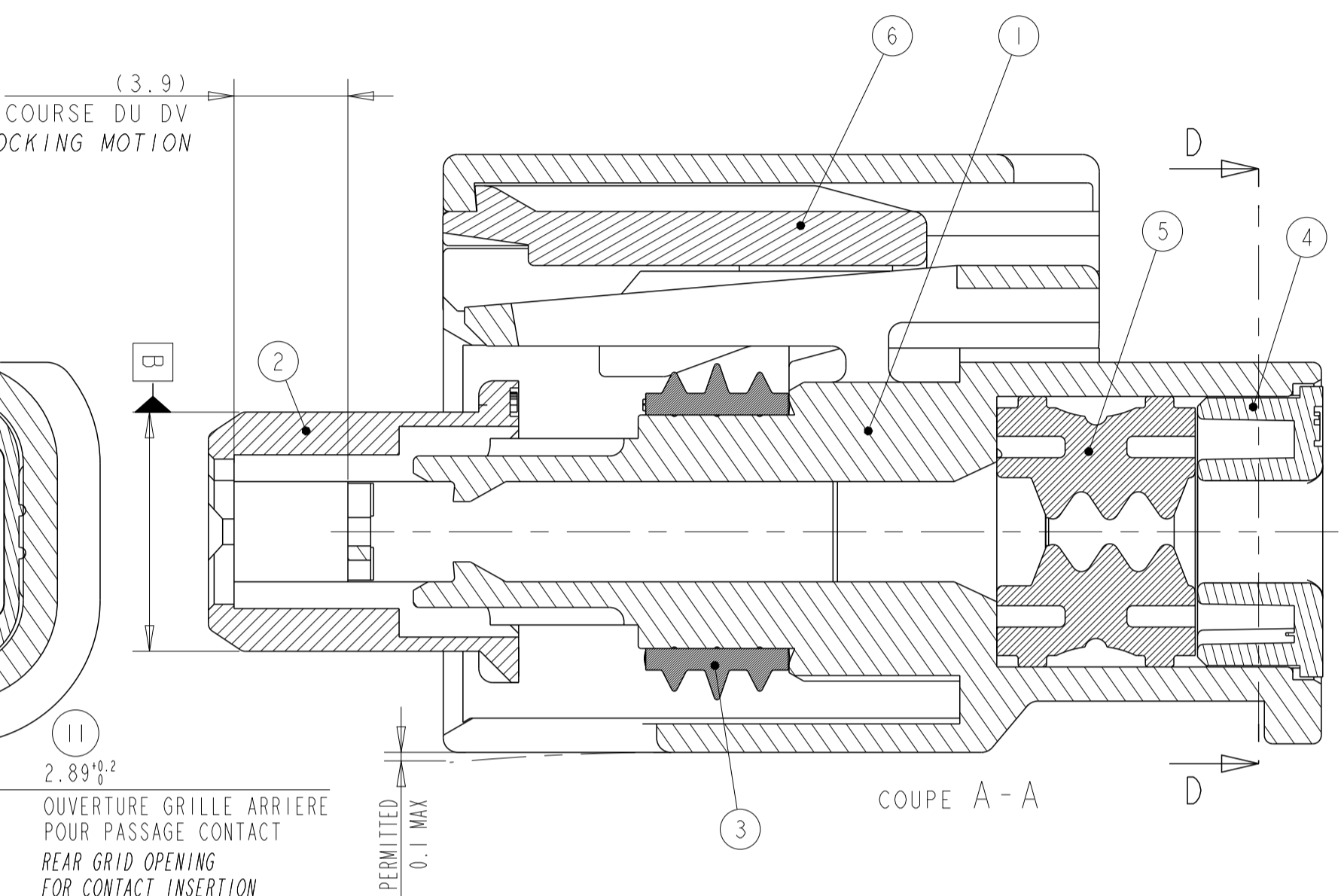
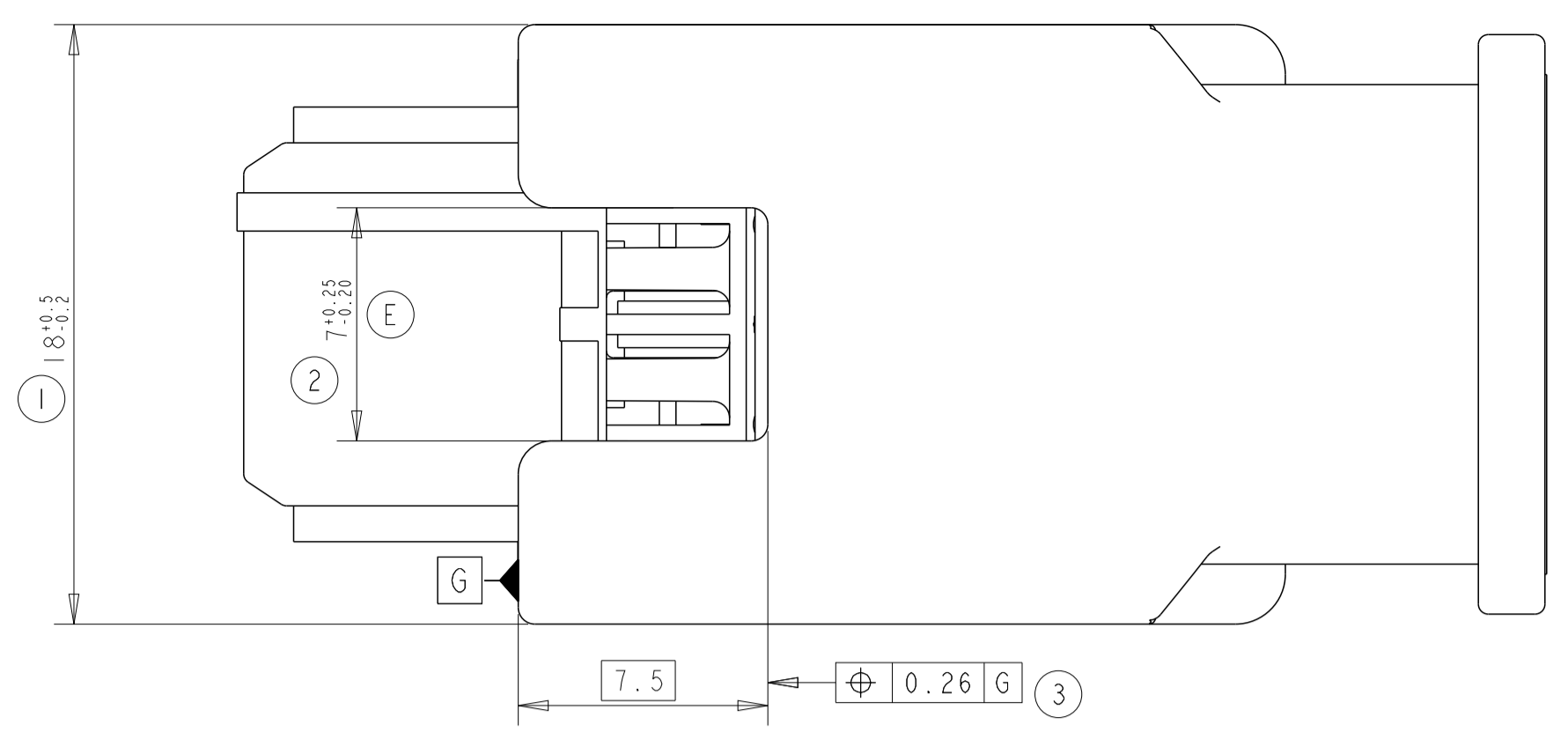
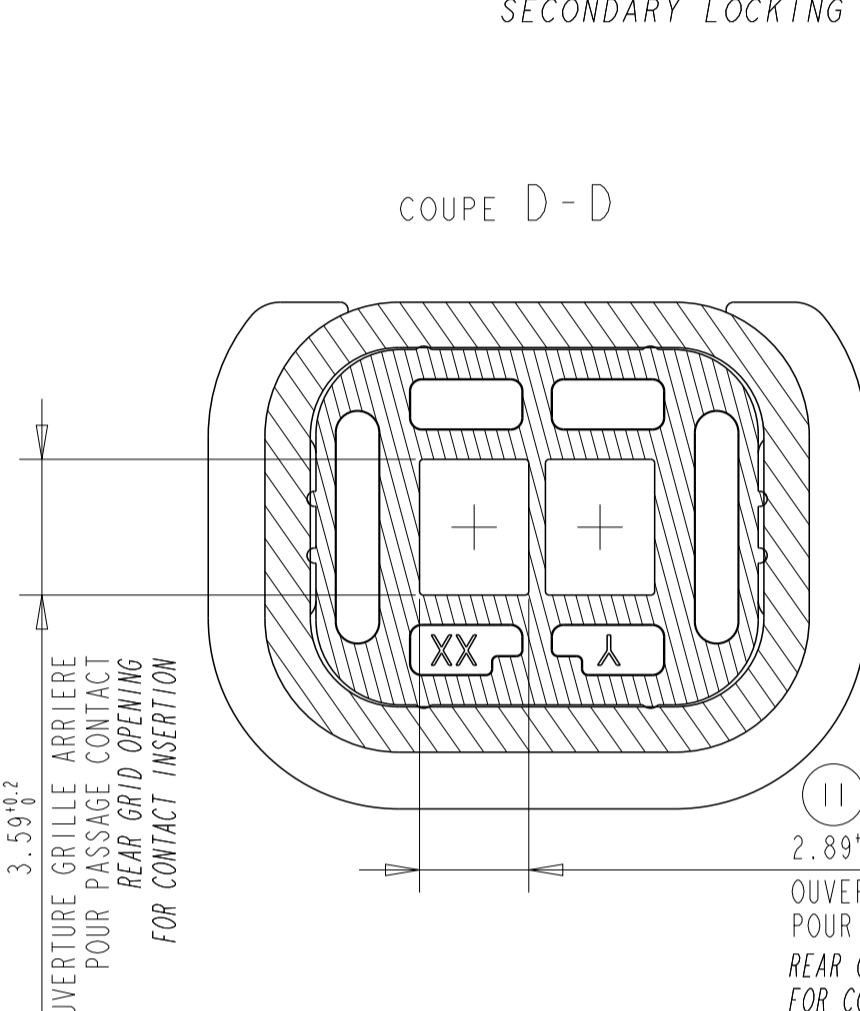
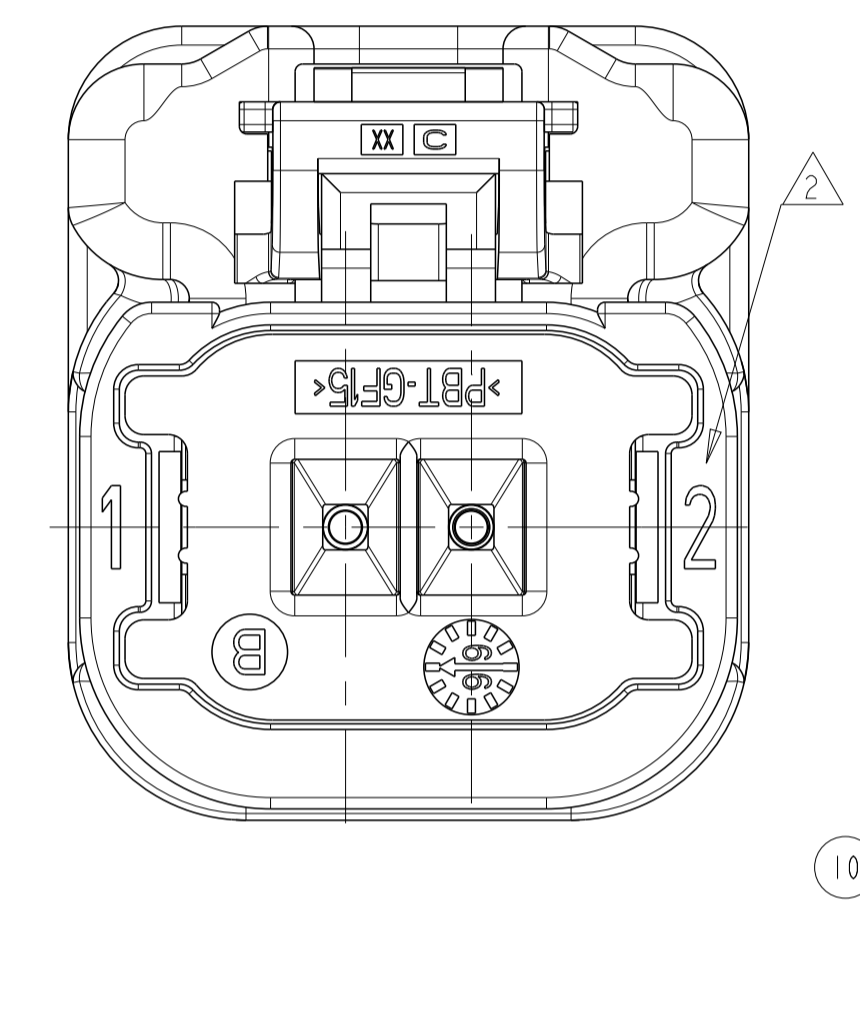


| REF. TE NO. | INDICE DE REVISION PRODUIT / PRODUCT REVISION NUMBER | COULEUR / COLOR | TOLERANCE POUR DETROMPAGE: ±0.05 / KEYING TOLERANCE |
|-------------|--|-----------------|---|
| 1801176-1 | C | NOIR / BLACK | ECHELLE 2:1 100 3.95 |
| 1801176-2 | C | BLEU / BLUE | ECHELLE 2:1 110 2.6 |
| 1801176-3 | C | GRIS / GREY | ECHELLE 2:1 120 1.25 |
| 1801176-4 | C | JAUNE / YELLOW | ECHELLE 2:1 130 0.1 |
| 1801176-5 | C | VERT / GREEN | ECHELLE 2:1 140 1.45 |
| 1801176-6 | C | MARRON / BROWN | ECHELLE 2:1 150 2.8 |
| 1801176-7 | C | BLANC / WHITE | ECHELLE 2:1 160 1.15 |
| 1801176-8 | C | ROUGE / RED | ECHELLE 2:1 170 1.15 |
| 1801176-9 | C | ORANGE / ORANGE | ECHELLE 2:1 |

- NOTES/NOTES:
- 1801176-1 REPRESENTE (COD. NOIR) / AS SHOWN (COD. BLACK)
 - REPERE ALVEOLES / CAVITY MARKING
 - LOGO TE / TE LOGO
 - DATE D'ASSEMBLAGE / ASSEMBLY DATE
 - CODE DU LIEU D'ASSEMBLAGE / ASSEMBLY LOCATION DATE
 E = EUROPE / EUROPE
 C = CHINE / CHINA
 M = MERCOSUR / MERCOSUR
 - NUMERO DE LA MACHINE D'ASSEMBLAGE / NUMBER ASSEMBLY LINE
 - REF. TE DE L'ASSEMBLAGE (RACINE) / TE ASSEMBLY NO (RACINE)
 - REF. TE DE L'ASSEMBLAGE (SUFFIXE) / TE ASSEMBLY NO (SUFFIX)
 - INDICE DE REVISION PRODUIT / PRODUCT REVISION NUMBER
 - PIECES A UTILISER AVEC VOIR TABLEAU "COMPOSANTS ASSOCIES" / MATED WITH : SEE TABLE "ASSOCIATED PARTS"
 - FORME OPTIONNELLE / OPTIONAL SHAPE



SECTION CABLE ADMISSIBLE PAR CONTACT / ACCEPTABLE CABLE SECTIONS PER CONTACT

La section des câbles utilisés doit être comprise entre 0,35 et 2mm² avec un diamètre d'isolant compris entre 1,40mm mini et 2,80mm Maxi (The cross-section of the cables used must be between 0,35 and 2mm² with insulator diameter included between 1,40mm mini and 2,80mm Maxi)

| DESCRIPTION / TITLE | TE NO / REF. TE |
|---|-----------------|
| CAPOT FIXE 2 VOIES - SORTIE GAUCHE/DROITE / FIXED COVER 2 WAYS - LEFT/RIGHT EXIT | 1801466-1 |
| CAPOT FIXE 2 VOIES - SORTIE HAUT/BAS / FIXED COVER 2 WAYS - UP/DOWN EXIT | 1801466-2 |
| CAPOT FIXE 2 VOIES - SORTIE AXIALE / FIXED COVER 2 WAYS - EXIT IN LINE | 1801155-5 |
| CAPOT ROTATIF 90 DEG. 2 VOIES / ROTATIVE COVER 90 DEG. 2 WAYS | 1801356-1 |
| CLIP 1.5 SENSOR 11 DORE Section 1.4 à 2mm ² / RECEPTACLE 1.5 SENSOR 11 GOLD PLATED Section 1.4 to 2mm ² | 1670328-1 |
| CLIP 1.5 SENSOR 11 DORE Section 0.75 à 1mm ² / RECEPTACLE 1.5 SENSOR 11 GOLD PLATED Section 0.75 to 1mm ² | 1670326-1 |
| CLIP 1.5 SENSOR 11 DORE Section 0.35 à 0.5mm ² / RECEPTACLE 1.5 SENSOR 11 GOLD PLATED Section 0.35 to 0.5mm ² | 1564724-1 |
| OBTURATEUR "MINI-ETANCHE" / "MINI-ETANCHE" PLUGGING PIN | |
| PORTE-LANGUETTES 2 VOIES HP / 2 WAYS TAB CONNECTOR HP | 1801174-X |

| COULEUR / COLOR | MATIERE / MATERIAL | DESCRIPTION / TITLE | REP. ITEM |
|-----------------|--|---|-----------|
| JAUNE / YELLOW | ACIER INOX / STAINLESS STEEL | RESSORT (x2) / SPRING (x2) | 7 |
| VERT / GREEN | PA66-GF30 (MATIERE: HB) / (HB MATERIAL) | CHARIOT SPRING-LOCK / SPRING-LOCK SLIDE | 6 |
| NOIR / BLACK | SILICONE LUBRIFIE A 5% ; DURETE 30 SHORE A / LUBRIFICATED SILICON TO 5% ; HARNESS 30 SH. A | JOINT GROMMET / GROMMET SEAL | 5 |
| VERT / GREEN | PBT-GF15 (MATIERE: HB) / (HB MATERIAL) | GRILLE ARRIERE / REAR GRID | 4 |
| VERT / GREEN | SILICONE LUBRIFIE A 4% ; DURETE 50 SHORE A / LUBRIFICATED SILICON TO 4% ; HARNESS 50 SH. A | JOINT INTERFACIAL / INTERFACE SEAL | 3 |
| NOIR / BLACK | PBT-GF15 (MATIERE: HB) / (HB MATERIAL) | DOUBLE VERROUILLAGE / COUAGE (VOIR TABLEAU DES REFS) / SECONDARY LOCKING / CODING (SEE TABLE OF PART NO.) | 2 |
| NOIR / BLACK | PBT-GF15 (MATIERE: HB) / (HB MATERIAL) | BOITIER PORTE-CLIPS / RECEPTACLE HOUSING | 1 |

THIS DRAWING IS A CONTROLLED DOCUMENT. DWG: F. JODON 11FEB2008, CHK: X. ROUILLARD 15FEB2008, APVD: X. ROUILLARD 15FEB2008

DIMENSIONS: mm. TOLERANCES UNLESS OTHERWISE SPECIFIED: 0 PLC ±, 1 PLC ±, 2 PLC ±0.2, 3 PLC ±, 4 PLC ±, ANGLES ±2°.

MATERIAL: SEE TABLE VOIR TABLEAU. FINISH: SEE TABLE VOIR TABLEAU. WEIGHT: 7.4g. CUSTOMER DRAWING: A100779C=1801176

NAME: 2 WAYS RECEPTACLE CONNECTOR SL. PORTÉ-CLIPS 2 Voies SL SYSTEME A RESSORT. SIZE: 411-15712. SCALE: 5:1. SHEET: 1 OF 1. REV: F

Mouser Electronics

Authorized Distributor

Click to View Pricing, Inventory, Delivery & Lifecycle Information:

[TE Connectivity:](#)

[1801176-3](#)