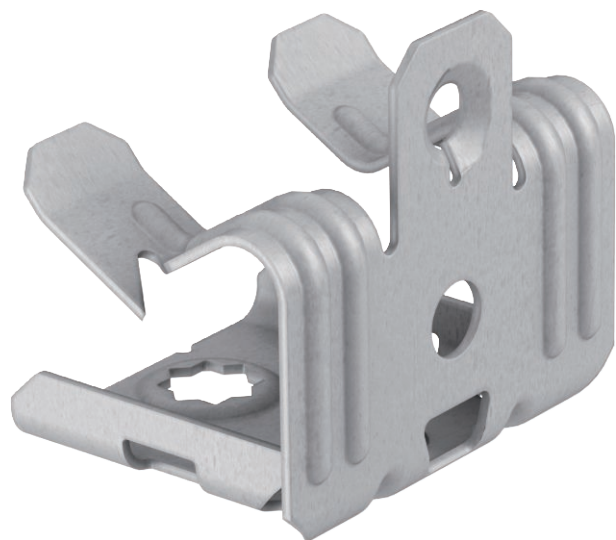


Technical data sheet

Beam clamp, with female thread

Item no. 1483625



Beam clamp for knocking in with internal thread as individual fastening solution on the beam.



St	Steel
ZL	Zinc slat

Master data

Item no.	1483625
Type	BCUIT 14-20 M6
Description 1	Beam clamp
Description 2	with female thread M6
Dimension	14-20mm
Material	Steel
Material symbol	St
Surface	Zinc slat
Surface symbol	ZL
Smallest sales unit (VG)	100,00 Piece
Weight	2,70 kg/100 pc.

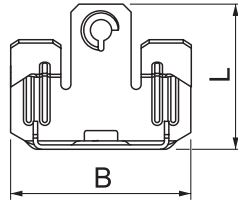
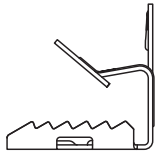
Technical data sheet

Beam clamp, with female thread

Item no. 1483625



Technical data



Connection type/component	Thread
Fastening type	Clamp
Fastening hole	7,00 mm
Breaking load	500,00 N
Flangethickness	14,00 - 20,00 mm
Thread	M6
Thread size M	6,00
Hinge, adjustable	<input type="checkbox"/>
Hinged	<input type="checkbox"/>