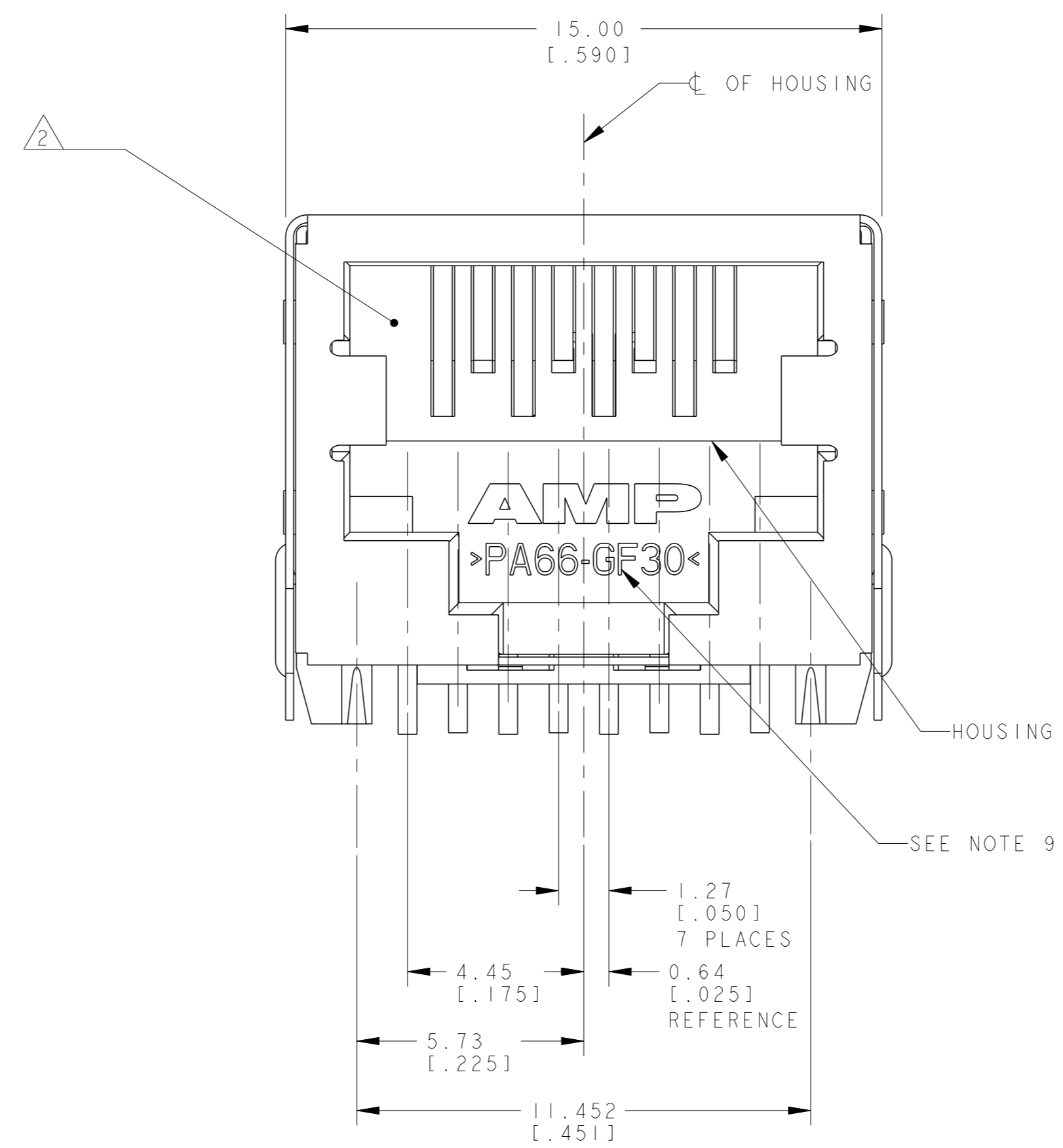
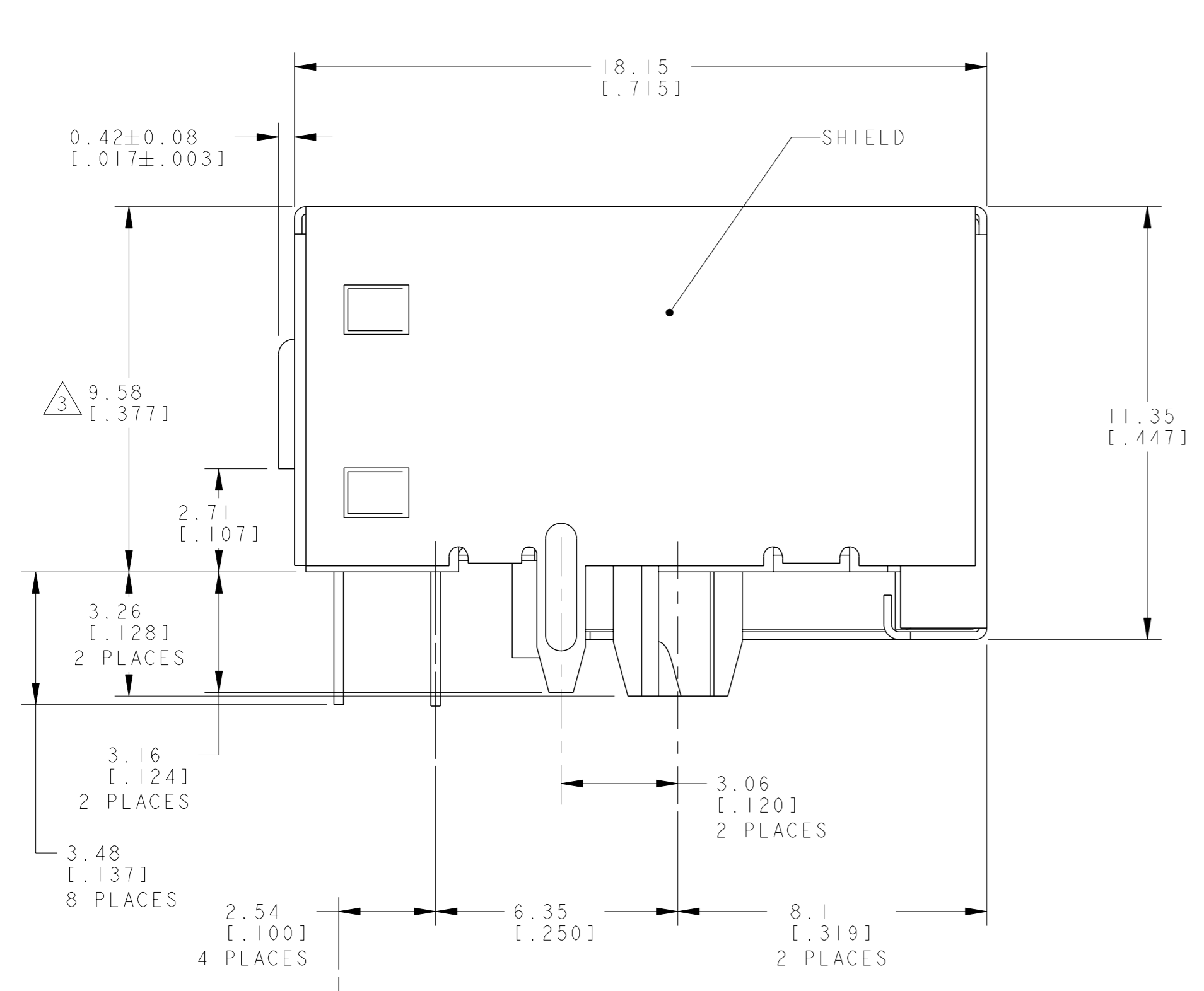
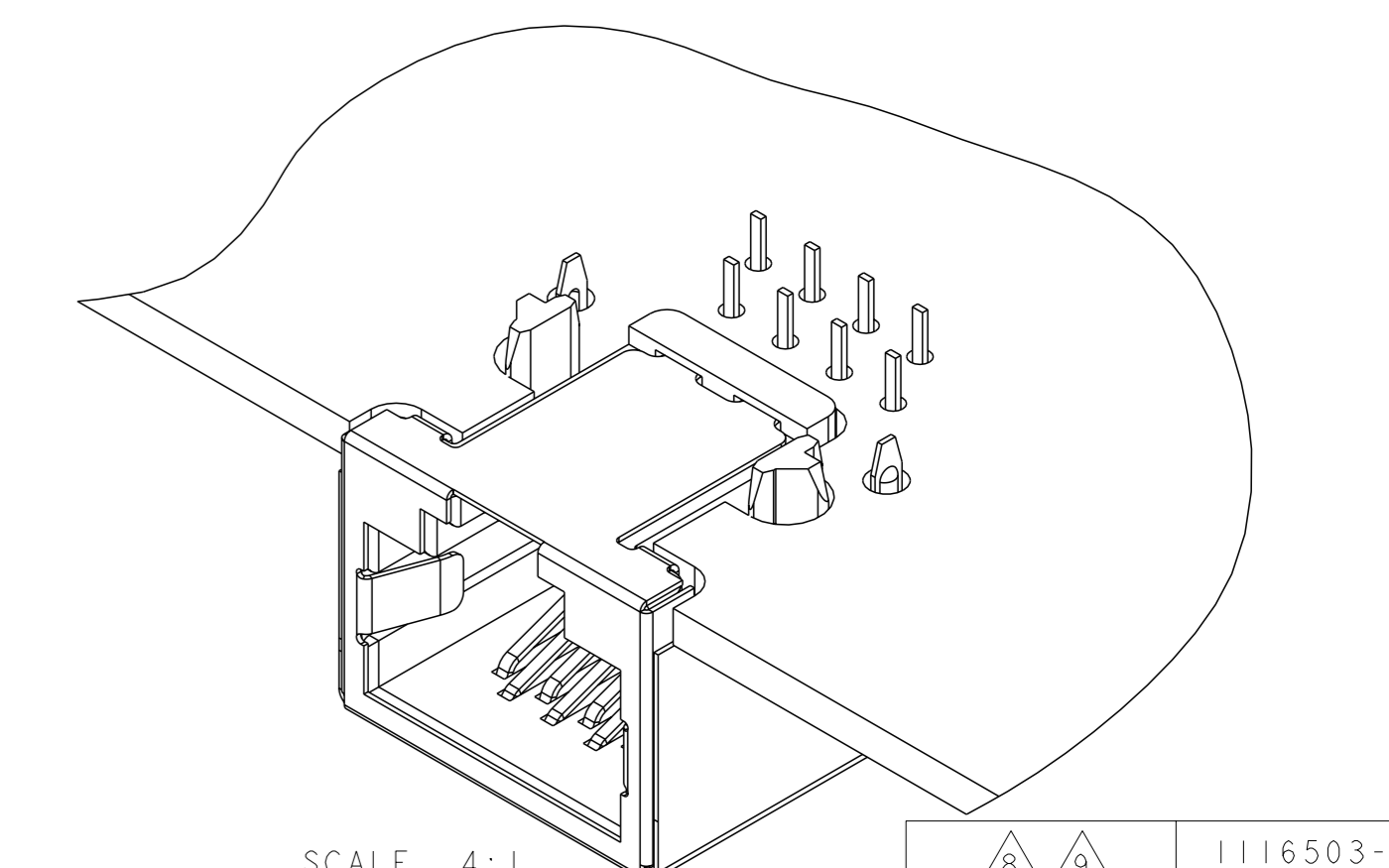
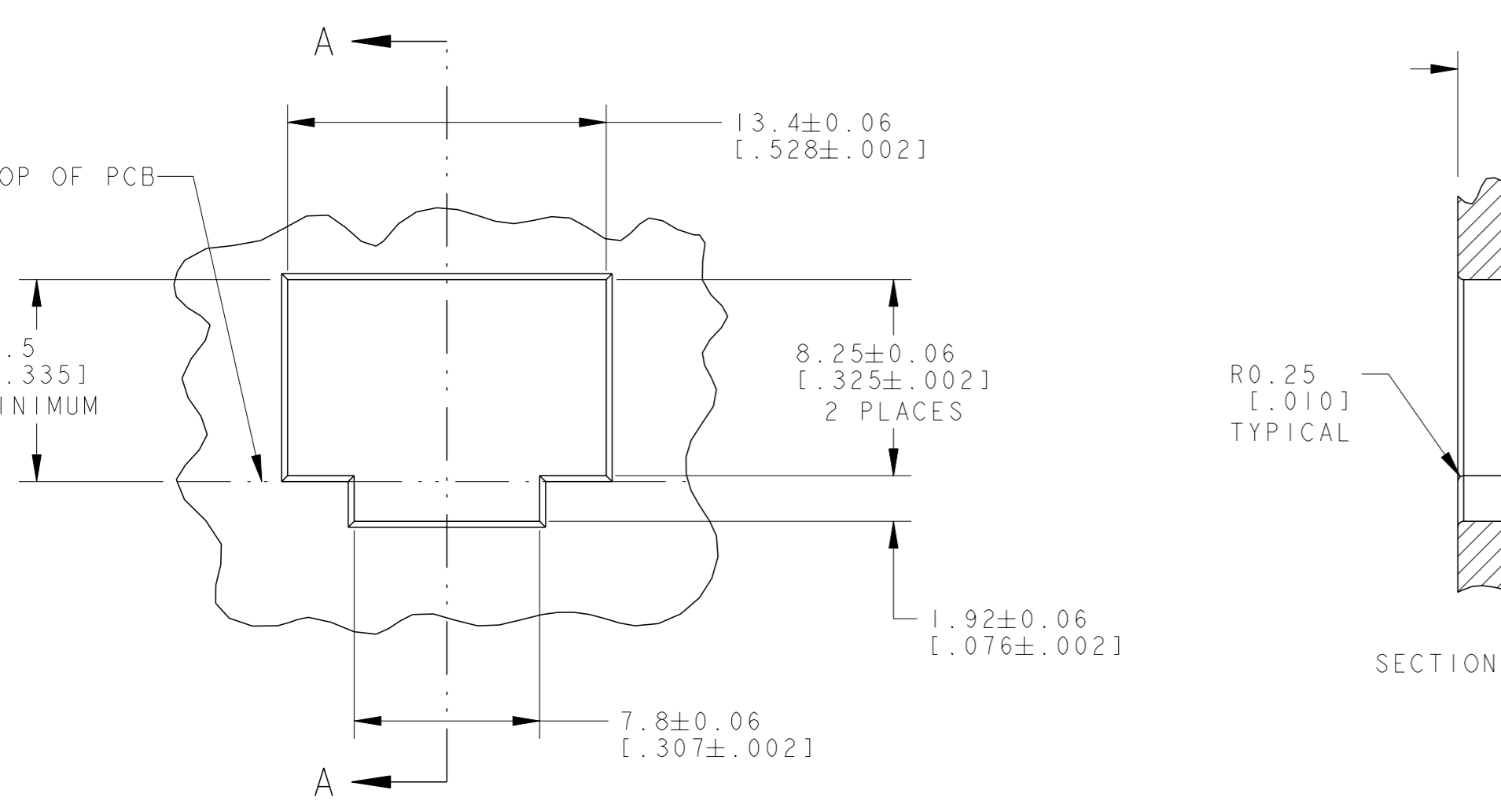
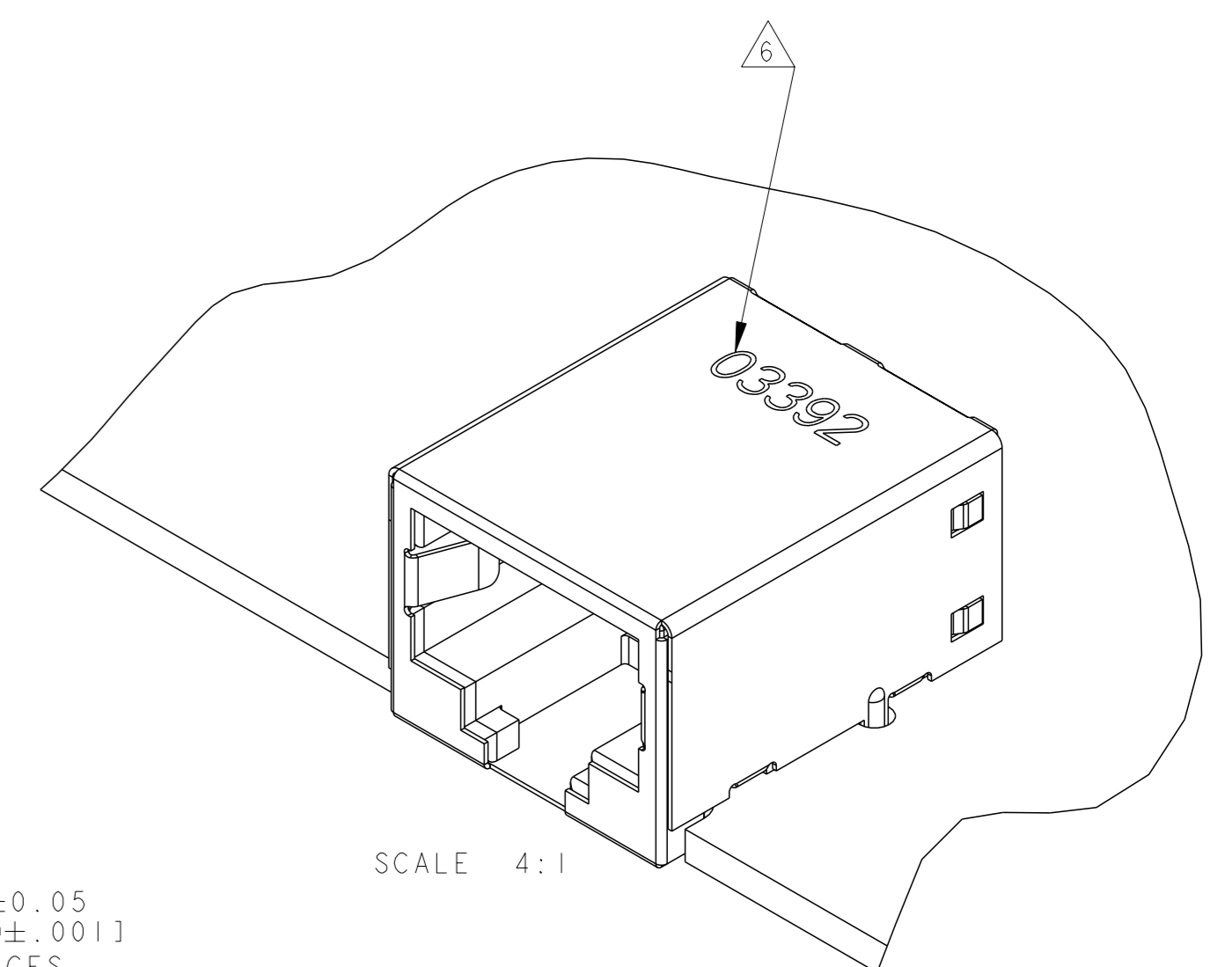
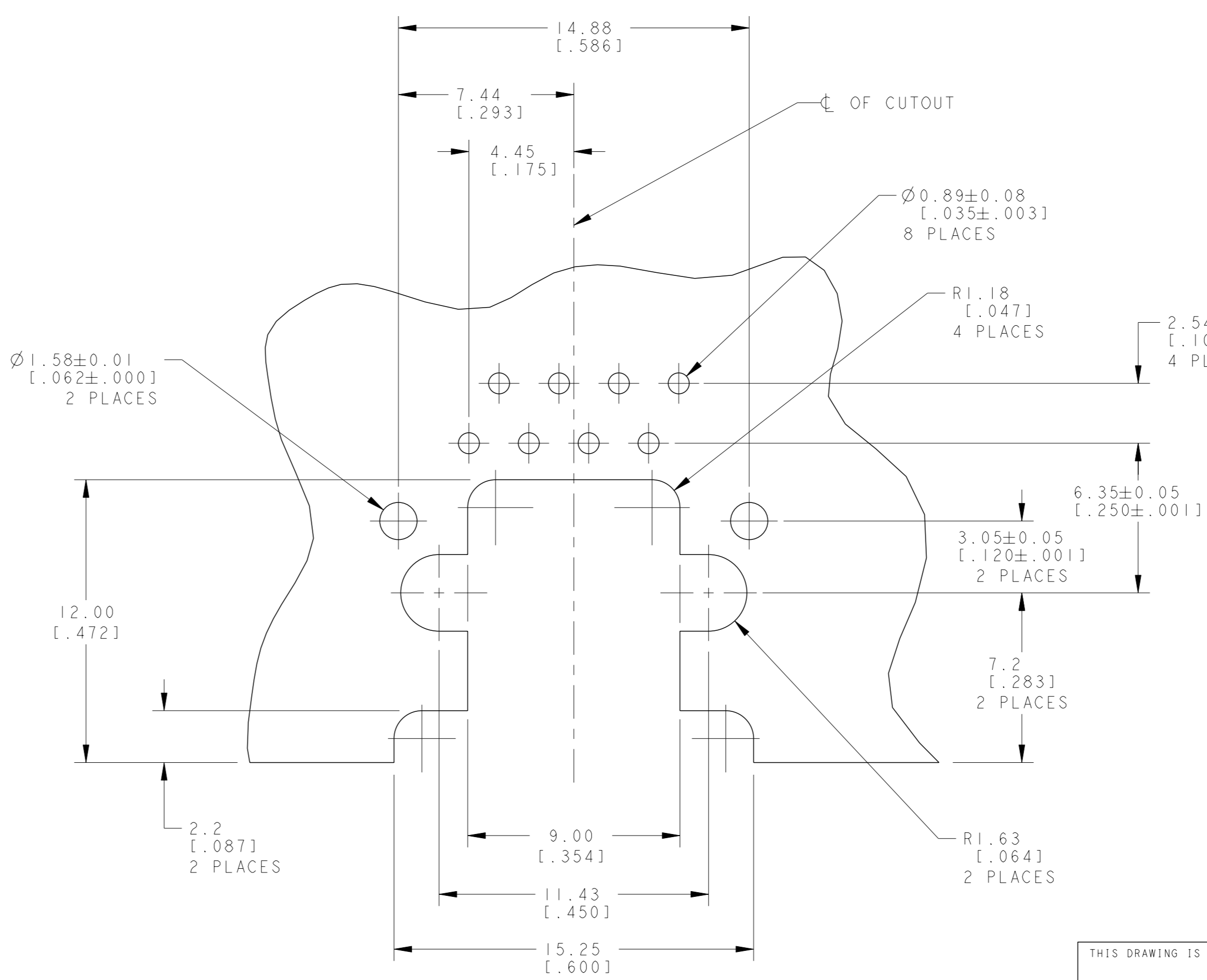
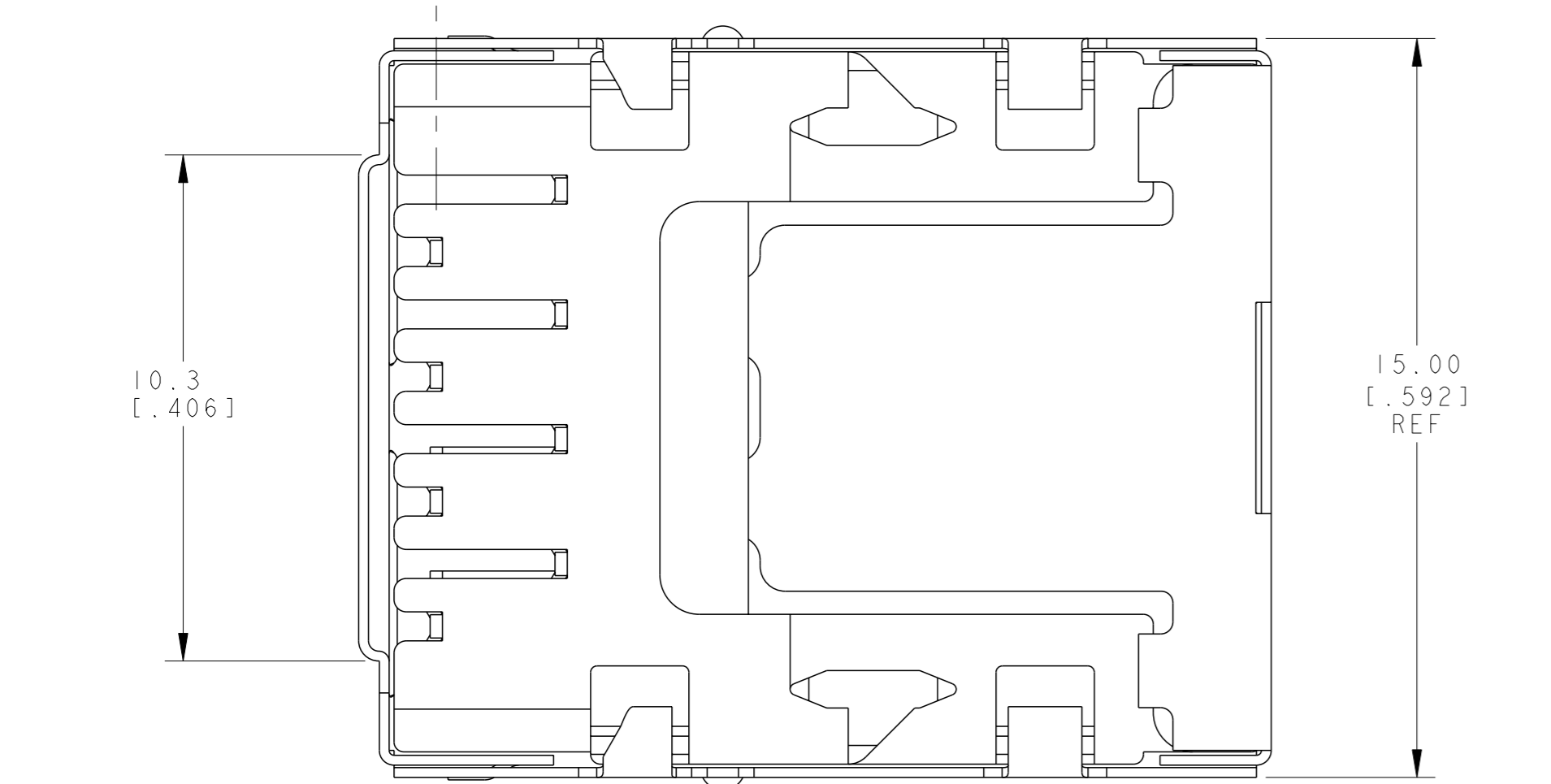


REVISONS		DATE	OWN	APVD
N1	REVISED PER ECO-11-005027	12MAY2011	RK	HMR
P	REVISED PER ECO-14-015233	27APR2015	LL	SH
R	ECO-16-011601	05AUG2016	LL	SH



- 1 MATERIAL: HOUSING - HIGH TEMPERATURE NYLON, BLACK, UL 94V-0, TERMINALS - 0.25[.01] THICK PHOSPHOR BRONZE PLATED WITH 3.81um(.000150) MINIMUM THICK BRIGHT TIN-LEAD IN SOLDER AREA, 1.27um(.000050) MINIMUM GOLD IN LOCALIZED PLATE AREA. ENTIRE TERMINAL PLATED WITH 1.27um(.000050) MINIMUM THICK NICKEL. SHIELD - 0.1[.0039] MIN THICK COPPER ZINC ALLOY, PREPLATED WITH 2.0-4.0um (.000079-.000157) THICK TIN OVER 1.27 um (.000050) MIN THICK NICKEL.
- 2 JACK CAVITY CONFORMS TO FCC RULES AND REGULATIONS PART 68, SUBPART F.
- 3 THIS DIMENSION REPRESENTS THE TOTAL HEIGHT OF THE CONNECTOR FROM THE TOP OF THE PC BOARD.
- 4. PACKAGED 66 ASSEMBLIES PER PVC TRAY, 396 PER BOX.
- 5. DIELECTRIC WITHSTANDING VOLTAGE BETWEEN SHIELD AND TERMINAL IS 1500 VAC.
- 6 MANUFACTURING DATE CODE:
ORIENTED AND LOCATED APPROXIMATELY AS SHOWN. LASER PRINTING.
TEXT HEIGHT APPROXIMATELY 2MM.
FIRST 2 DIGITS = LAST 2 DIGITS OF YEAR
NEXT 2 DIGITS = MANUFACTURING WORK WEEK
LAST DIGIT = DAY OF WEEK WITH SUNDAY = 1
- 7 MATERIAL: HOUSING - HIGH TEMPERATURE NYLON, BLACK, UL 94V-0, TERMINALS - 0.25[.01] THICK PHOSPHOR BRONZE PLATED WITH 3.81um(.000150) MINIMUM THICK MATTE TIN IN SOLDER AREA, 1.27um(.000050) MINIMUM GOLD IN LOCALIZED PLATE AREA. ENTIRE TERMINAL PLATED WITH 1.27um(.000050) MINIMUM THICK NICKEL. SHIELD - 0.1[.0039] MIN THICK COPPER ZINC ALLOY, PREPLATED WITH 2.0-4.0um (.000079-.000157) THICK TIN OVER 1.27 um (.000050) MIN THICK NICKEL.
- 8 MATERIAL: HOUSING - POLYESTER LCP, NATURE, UL 94V-0, TERMINALS - 0.25[.01] THICK PHOSPHOR BRONZE PLATED WITH 3.81um(.000150) MINIMUM THICK MATTE TIN IN SOLDER AREA, 1.27um(.000050) MINIMUM GOLD IN LOCALIZED PLATE AREA. ENTIRE TERMINAL PLATED WITH 1.27um(.000050) MINIMUM THICK NICKEL. SHIELD - 0.1[.0039] MIN THICK COPPER ZINC ALLOY, PREPLATED WITH 2.0-4.0um (.000079-.000157) THICK TIN OVER 1.27 um (.000050) MIN THICK NICKEL.
- 9 FOR 1116503-3 MATERIAL MARK: >LCP-GF30<.



THIS DRAWING IS A CONTROLLED DOCUMENT.		OWN: J. AHERON 07APR99	TE Connectivity
DIMENSIONS: mm [INCHES]		CHK: D. KEMPKA 07APR99	
TOLERANCES UNLESS OTHERWISE SPECIFIED:		APVD: D. KEMPKA 07APR99	NAME: MODULAR JACK ASSEMBLY, 8 POSITION, SHIELDED, 10mm WITHOUT PANEL TABS PRODUCT SPEC: 108-1163 APPLICATION SPEC: 114-2048
0 PLC ±		SIZE: 114-2048	
1 PLC ±		WEIGHT: 3.49 grams	RESTRICTED TO: - SCALE: 1:1 SHEET: 1 OF 1 REV: R
2 PLC ±0.13(.005)		CUSTOMER DRAWING	
3 PLC ±			
4 PLC ±			
ANGLES ±			
MATERIAL: SEE P/N TABLE		FINISH: SEE P/N TABLE	

Mouser Electronics

Authorized Distributor

Click to View Pricing, Inventory, Delivery & Lifecycle Information:

[TE Connectivity:](#)

[1116503-2](#)