



© 2016 AF CI



Amphenol
FCI



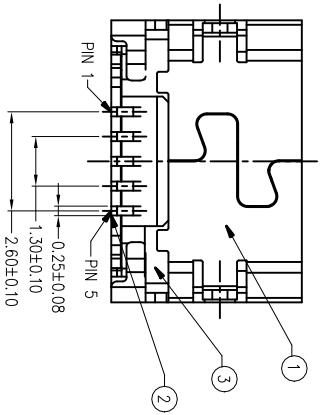
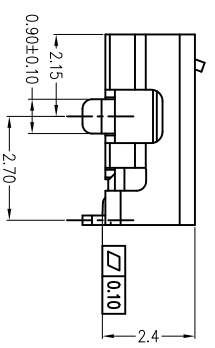
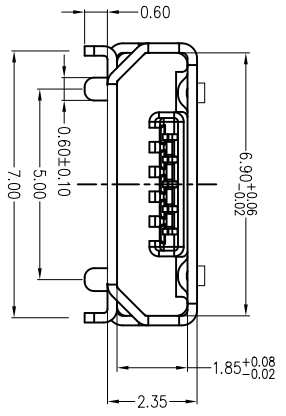
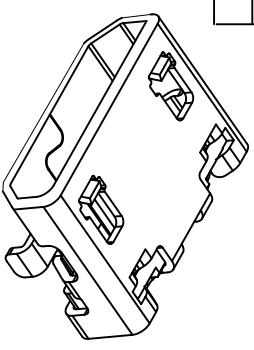
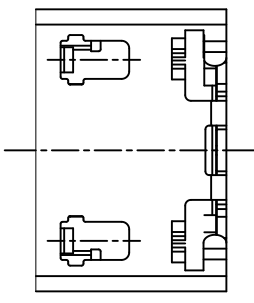
31



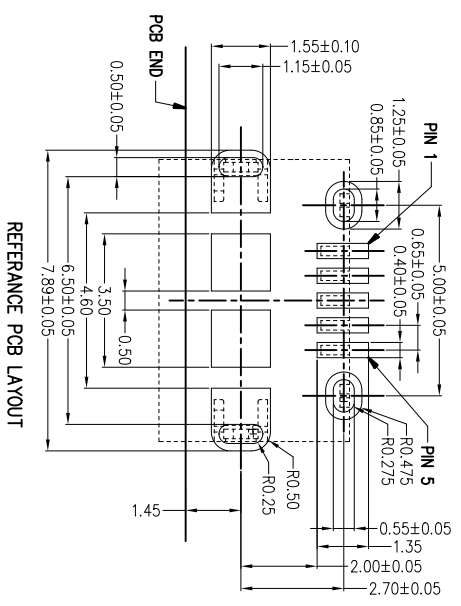
4

PART NUMBER
10118194-0X1XLF

Item	Title	Q'TY
1	Shell	1
2	Terminal	5
3	InsertMolding	1



- NOTES:
- MATERIAL:
HOUSING: HIGH THERMOPLASTIC RESIN, UL94V-0, COLOR: BLACK
TERMINAL: COPPER ALLOY
SHELL: STAINLESS WITH FLANGE OR WITHOUT FLANGE
 - FINISH:
CONTACT AREA: SEE PRODUCT MEMBER DESCRIPTION
CONTACT SOLDER AREA: GOLD FLASH
SHELL: MATTE TIN PLATED
- TYPE
UNDER NICKEL PLATED ALL OVER.
PRODUCT SPECIFICATION: GS-12-64I.
PACKAGING SPECIFICATION: GS-14-2180.
THE "LF" MEANS FOR LEAD FREE AND CAN WITHSTAND EXPOSE TO 260°C PEAK TEMPERATURE FOR 10 SECONDS IN IR REFLOW PROCESS.



B

form: A4mmXlc-2016-02-24

1

2

3

4

mat'l. code	surface	tolerance	projection	product family
	ASME Y14.5	ASME Y14.5		HPL_511
tr	ecn no	dr	date	
D				
	tolerances unless otherwise specified			
	angle	ASD	X±0.38	
		E	.XX±0.25	
		F	.XXX±0.10	
		G	.XXX±0.10	
		H	.XXX±0.10	
		I	.XXX±0.10	
		J	.XXX±0.10	
		K	.XXX±0.10	
		L	.XXX±0.10	
		M	.XXX±0.10	
		N	.XXX±0.10	
		O	.XXX±0.10	
		P	.XXX±0.10	
		Q	.XXX±0.10	
		R	.XXX±0.10	
		S	.XXX±0.10	
		T	.XXX±0.10	
		U	.XXX±0.10	
		V	.XXX±0.10	
		W	.XXX±0.10	
		X	.XXX±0.10	
		Y	.XXX±0.10	
		Z	.XXX±0.10	
		AA	.XXX±0.10	
		AB	.XXX±0.10	
		AC	.XXX±0.10	
		AD	.XXX±0.10	
		AE	.XXX±0.10	
		AF	.XXX±0.10	
		AG	.XXX±0.10	
		AH	.XXX±0.10	
		AI	.XXX±0.10	
		AJ	.XXX±0.10	
		AK	.XXX±0.10	
		AL	.XXX±0.10	
		AM	.XXX±0.10	
		AN	.XXX±0.10	
		AO	.XXX±0.10	
		AP	.XXX±0.10	
		AQ	.XXX±0.10	
		AR	.XXX±0.10	
		AS	.XXX±0.10	
		AT	.XXX±0.10	
		AU	.XXX±0.10	
		AV	.XXX±0.10	
		AW	.XXX±0.10	
		AX	.XXX±0.10	
		AY	.XXX±0.10	
		AZ	.XXX±0.10	
		BA	.XXX±0.10	
		BB	.XXX±0.10	
		BC	.XXX±0.10	
		BD	.XXX±0.10	
		BE	.XXX±0.10	
		BF	.XXX±0.10	
		BG	.XXX±0.10	
		BH	.XXX±0.10	
		BI	.XXX±0.10	
		BJ	.XXX±0.10	
		BK	.XXX±0.10	
		BL	.XXX±0.10	
		BM	.XXX±0.10	
		BN	.XXX±0.10	
		BO	.XXX±0.10	
		BP	.XXX±0.10	
		BQ	.XXX±0.10	
		BR	.XXX±0.10	
		BS	.XXX±0.10	
		BT	.XXX±0.10	
		BU	.XXX±0.10	
		BV	.XXX±0.10	
		BW	.XXX±0.10	
		BX	.XXX±0.10	
		BY	.XXX±0.10	
		BZ	.XXX±0.10	
		CA	.XXX±0.10	
		CB	.XXX±0.10	
		CC	.XXX±0.10	
		CD	.XXX±0.10	
		CE	.XXX±0.10	
		CF	.XXX±0.10	
		CG	.XXX±0.10	
		CH	.XXX±0.10	
		CI	.XXX±0.10	
		CJ	.XXX±0.10	
		CK	.XXX±0.10	
		CL	.XXX±0.10	
		CM	.XXX±0.10	
		CN	.XXX±0.10	
		CO	.XXX±0.10	
		CP	.XXX±0.10	
		CQ	.XXX±0.10	
		CR	.XXX±0.10	
		CS	.XXX±0.10	
		CT	.XXX±0.10	
		CU	.XXX±0.10	
		CV	.XXX±0.10	
		CW	.XXX±0.10	
		CX	.XXX±0.10	
		CY	.XXX±0.10	
		CZ	.XXX±0.10	
		DA	.XXX±0.10	
		DB	.XXX±0.10	
		DC	.XXX±0.10	
		DD	.XXX±0.10	
		DE	.XXX±0.10	
		DF	.XXX±0.10	
		DG	.XXX±0.10	
		DH	.XXX±0.10	
		DI	.XXX±0.10	
		DJ	.XXX±0.10	
		DK	.XXX±0.10	
		DL	.XXX±0.10	
		DM	.XXX±0.10	
		DN	.XXX±0.10	
		DO	.XXX±0.10	
		DP	.XXX±0.10	
		DQ	.XXX±0.10	
		DR	.XXX±0.10	
		DS	.XXX±0.10	
		DT	.XXX±0.10	
		DU	.XXX±0.10	
		DV	.XXX±0.10	
		DW	.XXX±0.10	
		DX	.XXX±0.10	
		DY	.XXX±0.10	
		DZ	.XXX±0.10	
		EA	.XXX±0.10	
		EB	.XXX±0.10	
		EC	.XXX±0.10	
		ED	.XXX±0.10	
		EE	.XXX±0.10	
		EF	.XXX±0.10	
		EG	.XXX±0.10	
		EH	.XXX±0.10	
		EI	.XXX±0.10	
		EJ	.XXX±0.10	
		EK	.XXX±0.10	
		EL	.XXX±0.10	
		EM	.XXX±0.10	
		EN	.XXX±0.10	
		EO	.XXX±0.10	
		EP	.XXX±0.10	
		EQ	.XXX±0.10	
		ER	.XXX±0.10	
		ES	.XXX±0.10	
		ET	.XXX±0.10	
		EU	.XXX±0.10	
		EV	.XXX±0.10	
		EW	.XXX±0.10	
		EX	.XXX±0.10	
		EY	.XXX±0.10	
		EZ	.XXX±0.10	
		FA	.XXX±0.10	
		FB	.XXX±0.10	
		FC	.XXX±0.10	
		FD	.XXX±0.10	
		FE	.XXX±0.10	
		FF	.XXX±0.10	
		FG	.XXX±0.10	
		FH	.XXX±0.10	
		FI	.XXX±0.10	
		FJ	.XXX±0.10	
		FK	.XXX±0.10	
		FL	.XXX±0.10	
		FM	.XXX±0.10	
		FN	.XXX±0.10	
		FO	.XXX±0.10	
		FP	.XXX±0.10	
		FQ	.XXX±0.10	
		FR	.XXX±0.10	
		FS	.XXX±0.10	
		FT	.XXX±0.10	
		FU	.XXX±0.10	
		FV	.XXX±0.10	
		FW	.XXX±0.10	
		FX	.XXX±0.10	
		FY	.XXX±0.10	
		FZ	.XXX±0.10	
		GA	.XXX±0.10	
		GB	.XXX±0.10	
		GC	.XXX±0.10	
		GD	.XXX±0.10	
		GE	.XXX±0.10	
		GF	.XXX±0.10	
		GG	.XXX±0.10	
		GH	.XXX±0.10	
		GI	.XXX±0.10	
		GJ	.XXX±0.10	
		GK	.XXX±0.10	
		GL	.XXX±0.10	
		GM	.XXX±0.10	
		GN	.XXX±0.10	
		GO	.XXX±0.10	
		GP	.XXX±0.10	
		GQ	.XXX±0.10	
		GR	.XXX±0.10	
		GS	.XXX±0.10	
		GT	.XXX±0.10	
		GU	.XXX±0.10	
		GV	.XXX±0.10	
		GW	.XXX±0.10	
		GX	.XXX±0.10	
		GY	.XXX±0.10	
		GZ	.XXX±0.10	
		HA	.XXX±0.10	
		HB	.XXX±0.10	
		HC	.XXX±0.10	
		HD	.XXX±0.10	
		HE	.XXX±0.10	
		HF	.XXX±0.10	
		HG	.XXX±0.10	
		HH	.XXX±0.10	
		HI	.XXX±0.10	
		HJ	.XXX±0.10	
		HK	.XXX±0.10	
		HL	.XXX±0.10	
		HM	.XXX±0.10	
		HN	.XXX±0.10	
		HO	.XXX±0.10	
		HP	.XXX±0.10	
		HQ	.XXX±0.10	
		HR	.XXX±0.10	
		HS	.XXX±0.10	
		HT	.XXX±0.10	
		HU	.XXX±0.10	
		HV	.XXX±0.10	
		HW	.XXX±0.10	
		HX	.XXX±0.10	
		HY	.XXX±0.10	
		HZ	.XXX±0.10	
		IA	.XXX±0.10	
		IB	.XXX±0.10	
		IC	.XXX±0.10	
		ID	.XXX±0.10	
		IE	.XXX±0.10	
		IF	.XXX±0.10	
		IG	.XXX±0.10	
		IH	.XXX±0.10	
		II	.XXX±0.10	
		IJ	.XXX±0.10	
		IK	.XXX±0.10	
		IL	.XXX±0.10	
		IM	.XXX±0.10	
		IN	.XXX±0.10	
		IO	.XXX±0.10	
		IP	.XXX±0.10	
		IQ	.XXX±0.10	
		IR	.XXX±0.10	
		IS	.XXX±0.10	
		IT	.XXX±0.10	
		IU	.XXX±0.10	
		IV	.XXX±0.10	
		IW	.XXX±0.10	
		IX	.XXX±0.10	
		IY	.XXX±0.10	
		IZ	.XXX±0.10	
		JA	.XXX±0.10	

Mouser Electronics

Authorized Distributor

Click to View Pricing, Inventory, Delivery & Lifecycle Information:

[FCI / Amphenol:](#)

[10118194-0001LF](#) [10118194-0011LF](#) [10118194-0002LF](#) [10118194-1001LF](#) [10118194-0101LF](#) [10118194-0012LF](#)