

Low-Voltage, Dual-Supply, 8-Bit, Signal Translator with Configurable Voltage Supplies, Bushold Data Inputs, 3-State Outputs and 26 Ω Series Resistors in the B-Port Outputs

FXLH42245

Description

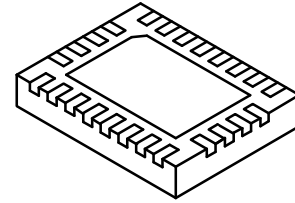
The FXLH42245 is a configurable dual-voltage-supply translator designed for bi-directional voltage translation of signals between two voltage levels. The device allows translation between voltages as high as 3.6 V to as low as 1.1 V. The A port tracks the V_{CCA} level and the B port tracks the V_{CCB} level. Both ports are designed to accept supply voltage levels from 1.1 V to 3.6 V. This allows for bi-directional voltage translation over a variety of voltage levels: 1.2 V, 1.5 V, 1.8 V, 2.5 V, and 3.3 V.

The device remains in 3-state until both V_{CC} s reach active levels, allowing either V_{CC} to be powered-up first. The device also contains power-down control circuits that place the device in 3-state if either V_{CC} is removed.

The Transmit/Receive (T/\bar{R}) input determines the direction of data flow through the device. The \overline{OE} input, when HIGH, disables both the A and B ports by placing them in a 3-state condition. The FXLH42245 is designed with the control pins (T/\bar{R} and \overline{OE}) supplied by V_{CCA} .

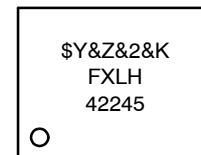
Features

- Bi-Directional Interface between Two Levels from 1.1 V to 3.6 V
- Fully Configurable, Inputs Track V_{CC} Level
- Non-Preferential Power-Up; Either V_{CC} May Be Powered-Up First
- Outputs Remain in 3-State Until Active V_{CC} Level is Reached
- Outputs Switch to 3-State if Either V_{CC} is at GND
- Bushold on Data Inputs Eliminates the need for External Pull-Up / Pull-Down Resistors
- 26 Ω Output Series Resistors on the B Port to Reduce Line Noise
- Power-Off Protection
- Control Input (T/\bar{R} , \overline{OE}) Levels are Referenced to V_{CCA} Voltage
- Packaged in 24-Pin MLP
- ESD Protection Exceeds:
 - ◆ 4 kV Human Body Model (JESD22-A114 & Mil Std 883e 3015.7)
 - ◆ 8 kV Human Body Model I/O to GND (JESD22-A114 & Mil Std 883e 3015.7)
 - ◆ 1 kV Charge Device Model (ESD STM 5.3)
 - ◆ 200 V Machine Model (JESD22-A115 & ESD STM5.2)



WQFN24, 4.5 x 3.5, 0.5P
 CASE 510CE

MARKING DIAGRAM



- \$Y = onsemi logo
- &Z = Assembly Plant Code
- &2 = 2-Digit Date Code
- &K = 2-Digits Lot Run Traceability Code
- FXLH42245 = Specific Device Code

ORDERING INFORMATION

| Device | Package | Shipping [†] |
|--------------|------------------|-----------------------|
| FXLH42245MPX | WQFN24 (Pb-Free) | 3000 / Tape & Reel |

[†]For information on tape and reel specifications, including part orientation and tape sizes, please refer to our Tape and Reel Packaging Specification Brochure, [BRD8011/D](#).

FXLH42245

PIN CONFIGURATION

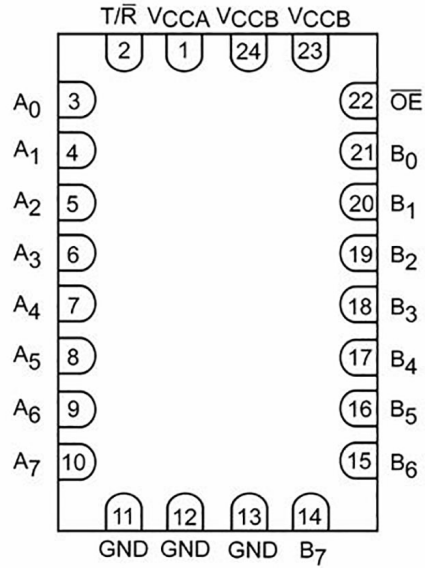


Figure 1. Pin Configuration (Top Through View)

PIN DEFINITIONS

| Pin No. | Name | Description |
|--------------------------------|---|----------------------------------|
| 1 | V _{CCA} | Side-A Power Supply |
| 2 | T/R | Transmit / Receive Input |
| 3, 4, 5, 6, 7, 8, 9, 10 | A ₀ , A ₁ , A ₂ , A ₃ , A ₄ , A ₅ , A ₆ , A ₇ | Side-A Inputs or 3-State Outputs |
| 11, 12, 13 | GND | Ground |
| 14, 15, 16, 17, 18, 19, 20, 21 | B ₇ , B ₆ , B ₅ , B ₄ , B ₃ , B ₂ , B ₁ , B ₀ | Side-B Inputs or 3-State Outputs |
| 22 | OE | Output Enable Input |
| 23, 24 | V _{CCB} | Side-B Power Supply |

TRUTH TABLE

| Inputs | | Description |
|--------------------|--------------------|---------------------|
| OE | T/R | |
| LOW Voltage Level | LOW Voltage Level | Bus B Data to Bus A |
| LOW Voltage Level | HIGH Voltage Level | Bus A Data to Bus B |
| HIGH Voltage Level | Don't Care | 3-State |

FXLH42245

ABSOLUTE MAXIMUM RATINGS

| Symbol | Parameter | Condition | Min | Max | Unit |
|-----------------|--|--|------------|-----------------|------|
| V_{CCA} | Supply Voltage | | -0.5 | 4.6 | V |
| V_{CCB} | | | -0.5 | 4.6 | |
| V_I | DC Input Voltage | I/O Port A | -0.5 | $V_{CCA} + 0.5$ | V |
| | | I/O Port B | -0.5 | $V_{CCB} + 0.5$ | |
| | | Control Inputs (T/R, OE) | -0.5 | 4.6 | |
| V_O | Output Voltage (Note 1) | Output 3-State | -0.5 | 4.6 | V |
| | | Output Active (A_n) | -0.5 | $V_{CCA} + 0.5$ | |
| | | Output Active (B_n) | -0.5 | $V_{CCB} + 0.5$ | |
| I_{IK} | DC Input Diode Current | $V_I < 0$ V | | -50 | mA |
| I_{OK} | DC Output Diode Current | $V_O < 0$ V | | -50 | mA |
| | | $V_O > V_{CC}$ | | 50 | |
| I_{OH}/I_{OL} | DC Output Source/Sink Current | | | ± 50 | mA |
| I_{CC} | DC V_{CC} or Ground Current per Supply Pin | | | ± 100 | mA |
| T_{STG} | Storage Temperature Range | | -65 | +150 | °C |
| ESD | Electrostatic Discharge Capability | Human Body Model, JESD22-A114, Mil Std 883e 3015.7 | | 4 | kV |
| | | | I/O to GND | 8 | |
| | | Charged Device Model, JESD22-C101, STM 5.3 | | | 1 |
| | | Machine Model, JESD22-A115, STM 5.2 | | | 200 |

Stresses exceeding those listed in the Maximum Ratings table may damage the device. If any of these limits are exceeded, device functionality should not be assumed, damage may occur and reliability may be affected.

1. I/O absolute maximum ratings must be observed.

RECOMMENDED OPERATING CONDITIONS

| Symbol | Parameter | Conditions | Min | Max | Unit | |
|---------------------|---------------------------------|---|------------------|-----------|------------|----|
| V_{CC} | Power Supply | Operating V_{CCA} or V_{CCB} | 1.1 | 3.6 | V | |
| V_I | Input Voltage | Port A | 0 | V_{CCA} | V | |
| | | Port B | 0 | V_{CCB} | | |
| | | Control Input (T/R, OE) | 0 | V_{CCA} | | |
| I_{OH}/I_{OL} | Output Current | Port A V_{CCA} | 3.0 V to 3.6 V | | ± 24 | mA |
| | | | 2.3 V to 2.7 V | | ± 18 | |
| | | | 1.65 V to 1.95 V | | ± 6 | |
| | | | 1.40 V to 1.65 V | | ± 2 | |
| | | | 1.1 V to 1.4 V | | ± 0.5 | |
| | | Port B V_{CCB} Resistor Outputs | 3.0 V to 3.6 V | | ± 14 | |
| | | | 2.3 V to 2.7 V | | ± 8 | |
| | | | 1.65 V to 1.95 V | | ± 3 | |
| | | | 1.40 V to 1.65 V | | ± 1 | |
| | | | 1.1 V to 1.4 V | | ± 0.25 | |
| T_A | Operating Temperature, Free Air | | -40 | +85 | °C | |
| $\Delta V/\Delta t$ | Input Edge Rate | $V_{CCA/B} = 1.1$ V to 3.6 V | | 10 | ns/V | |

Functional operation above the stresses listed in the Recommended Operating Ranges is not implied. Extended exposure to stresses beyond the Recommended Operating Ranges limits may affect device reliability.

2. All unused inputs must be held at V_{CCI} or GND.

FXLH42245

ELECTRICAL CHARACTERISTICS

| Symbol | Parameter | Conditions | V _{CCI} (V) | V _{CC0} (V) | Min | Max | Unit |
|-----------------|---|---|----------------------|----------------------|-------------------------|-------------------------|------|
| V _{IH} | HIGH Level Input (Note 3) | Data Inputs An, Bn | 2.70 to 3.60 | 1.1 to 3.6 | 2.0 | - | V |
| | | | 2.30 to 2.70 | | 1.6 | - | |
| | | | 1.65 to 2.30 | | 0.65 x V _{CCI} | - | |
| | | | 1.40 to 1.65 | | 0.65 x V _{CCI} | - | |
| | | | 1.10 to 1.40 | | 0.9 x V _{CCI} | - | |
| | | Control Pins \overline{OE} , T/ \overline{R} (Referenced to V _{CCA}) | 2.70 to 3.60 | 1.1 to 3.6 | 2.0 | - | |
| | | | 2.30 to 2.70 | | 1.6 | - | |
| | | | 1.65 to 2.30 | | 0.65 x V _{CCA} | - | |
| | | | 1.40 to 1.65 | | 0.65 x V _{CCA} | - | |
| | | | 1.10 to 1.40 | | 0.9 x V _{CCA} | - | |
| V _{IL} | LOW Level Input (Note 3) | Data Inputs An, Bn | 2.70 to 3.60 | 1.1 to 3.6 | - | 0.8 | V |
| | | | 2.30 to 2.70 | | - | 0.7 | |
| | | | 1.65 to 2.30 | | - | 0.35 x V _{CCI} | |
| | | | 1.40 to 1.65 | | - | 0.35 x V _{CCI} | |
| | | | 1.10 to 1.40 | | - | 0.10 x V _{CCI} | |
| | | Control Pins \overline{OE} , T/ \overline{R} (Referenced to V _{CCA}) | 2.70 to 3.60 | 1.1 to 3.6 | - | 0.8 | |
| | | | 2.30 to 2.70 | | - | 0.7 | |
| | | | 1.65 to 2.30 | | - | 0.35 x V _{CCA} | |
| | | | 1.40 to 1.65 | | - | 0.35 x V _{CCA} | |
| | | | 1.10 to 1.40 | | - | 0.10 x V _{CCA} | |
| V _{OH} | HIGH Level Output B Port (Note 4) | I _{OH} = -100 μ A | 1.1 to 3.6 | 1.1 to 3.6 | V _{CC0} to 0.2 | - | V |
| | | I _{OH} = -6 mA | 2.7 | 2.7 | 2.2 | - | |
| | | I _{OH} = -8 mA | 3.0 | 3.0 | 2.4 | - | |
| | | I _{OH} = -12 mA | 3.0 | 3.0 | 2.2 | - | |
| | | I _{OH} = -4 mA | 2.3 | 2.3 | 2.0 | - | |
| | | I _{OH} = -6 mA | 2.3 | 2.3 | 1.8 | - | |
| | | I _{OH} = -8 mA | 2.3 | 2.3 | 1.7 | - | |
| | | I _{OH} = -3 mA | 1.65 | 1.65 | 1.25 | - | |
| | | I _{OH} = -1 mA | 1.4 | 1.4 | 1.05 | - | |
| | | I _{OH} = -0.25 mA | 1.1 | 1.1 | 0.75 x V _{CC0} | - | |
| | HIGH Level Output A Port (Note 4) | I _{OH} = -100 μ A | 1.1 to 3.6 | 1.1 to 3.6 | V _{CC0} to 0.2 | - | |
| | | I _{OH} = -12 mA | 2.7 | 2.7 | 2.2 | - | |
| | | I _{OH} = -18 mA | 3.0 | 3.0 | 2.4 | - | |
| | | I _{OH} = -24 mA | 3.0 | 3.0 | 2.2 | - | |
| | | I _{OH} = -6 mA | 2.3 | 2.3 | 2.0 | - | |
| | | I _{OH} = -12 mA | 2.3 | 2.3 | 1.8 | - | |
| | | I _{OH} = -18 mA | 2.3 | 2.3 | 1.7 | - | |
| | | I _{OH} = -6 mA | 1.65 | 1.65 | 1.25 | - | |
| | | I _{OH} = -2 mA | 1.4 | 1.4 | 1.05 | - | |
| | | I _{OH} = -0.5 mA | 1.1 | 1.1 | 0.75 x V _{CC0} | - | |

FXLH42245

ELECTRICAL CHARACTERISTICS (continued)

| Symbol | Parameter | Conditions | V _{CC1} (V) | V _{CC0} (V) | Min | Max | Unit |
|----------------------|---|--|----------------------|----------------------|------|------------------------|------|
| V _{OL} | LOW Level Output B Port (Note 4) | I _{OH} = 100 μA | 1.1 to 3.6 | 1.1 to 3.6 | - | 0.2 | V |
| | | I _{OH} = 6 mA | 2.7 | 2.7 | - | 0.4 | |
| | | I _{OH} = 8 mA | 3.0 | 3.0 | - | 0.55 | |
| | | I _{OH} = 12 mA | 3.0 | 3.0 | - | 0.80 | |
| | | I _{OH} = 6 mA | 2.3 | 2.3 | - | 0.4 | |
| | | I _{OH} = 8 mA | 2.3 | 2.3 | - | 0.6 | |
| | | I _{OH} = 3 mA | 1.65 | 1.65 | - | 0.3 | |
| | | I _{OH} = 1 mA | 1.4 | 1.4 | - | 0.35 | |
| | | I _{OH} = 0.25 mA | 1.1 | 1.1 | - | 0.3 x V _{CC0} | |
| | LOW Level Output A Port (Note 4) | I _{OH} = 100 μA | 1.1 to 3.6 | 1.1 to 3.6 | - | 0.2 | |
| | | I _{OH} = 12 mA | 2.7 | 2.7 | - | 0.4 | |
| | | I _{OH} = 18 mA | 3.0 | 3.0 | - | 0.4 | |
| | | I _{OH} = 24 mA | 3.0 | 3.0 | - | 0.55 | |
| | | I _{OH} = 12 mA | 2.3 | 2.3 | - | 0.4 | |
| | | I _{OH} = 18 mA | 2.3 | 2.3 | - | 0.6 | |
| | | I _{OH} = 6 mA | 1.65 | 1.65 | - | 0.3 | |
| | | I _{OH} = 2 mA | 1.4 | 1.4 | - | 0.35 | |
| | | I _{OH} = 0.5 mA | 1.1 | 1.1 | - | 0.3 x V _{CC0} | |
| I _L | Input Leakage Current, Control Pins | V _I = V _{CCA} or GND | 1.1 to 3.6 | 3.6 | - | ±1.0 | μA |
| I _{I(HOLD)} | Bushold Input Minimum Drive Current | V _{IN} = 0.8 | 3.0 | 3.0 | 75 | - | μA |
| | | V _{IN} = 2.0 | 3.0 | 3.0 | -75 | - | |
| | | V _{IN} = 0.7 | 2.3 | 2.3 | 45 | - | |
| | | V _{IN} = 1.6 | 2.3 | 2.3 | -45 | - | |
| | | V _{IN} = 0.57 | 1.65 | 1.65 | 25 | - | |
| | | V _{IN} = 10.7 | 1.65 | 1.65 | -25 | - | |
| | | V _{IN} = 0.49 | 1.4 | 1.4 | 11 | - | |
| | | V _{IN} = 0.91 | 1.4 | 1.4 | -11 | - | |
| | | V _{IN} = 0.11 | 1.1 | 1.1 | - | 4 | |
| | | V _{IN} = 0.99 | 1.1 | 1.1 | - | -4 | |
| I _{I(OD)} | Bushold Input Over-Drive Current-to-Current State | (Note 5) | 3.6 | 3.6 | 450 | - | μA |
| | | (Note 6) | 3.6 | 3.6 | -450 | - | |
| | | (Note 5) | 2.7 | 2.7 | 300 | - | |
| | | (Note 6) | 2.7 | 2.7 | -300 | - | |
| | | (Note 5) | 1.95 | 1.95 | 200 | - | |
| | | (Note 6) | 1.95 | 1.95 | -200 | - | |
| | | (Note 5) | 1.6 | 1.6 | 120 | - | |
| | | (Note 6) | 1.6 | 1.6 | -120 | - | |
| | | (Note 5) | 1.4 | 1.4 | 80 | - | |
| | | (Note 6) | 1.4 | 1.4 | -80 | - | |

FXLH42245

ELECTRICAL CHARACTERISTICS (continued)

| Symbol | Parameter | Conditions | V _{CCI} (V) | V _{CCO} (V) | Min | Max | Unit |
|---------------------|---|---|----------------------|----------------------|-----|-----|------|
| I _{OFF} | Power Off Leakage Current | A _n , V _I or V _O = 0 V to 3.6 V | 0 | 3.6 | - | ±10 | μA |
| | | B _n , V _I or V _O = 0 V to 3.6 V | 3.6 | 0 | - | ±10 | |
| I _{OZ} | 3-State Output Leakage (V _O , V _{CC} or GND V _I = V _{IH} or V _{IL}) | A _n , B _n , \overline{OE} = V _{IH} | 3.6 | 3.6 | - | ±10 | μA |
| | | B _n , \overline{OE} = Don't Care (Note 7) | 0 | 3.6 | - | ±10 | |
| | | A _n , \overline{OE} = Don't Care (Note 7) | 3.6 | 0 | - | ±10 | |
| I _{CCA/B} | Quiescent Supply Current (Note 8) | V _I = V _{CCI} or GND; I _O = 0 | 1.1 to 3.6 | 1.1 to 3.6 | - | 20 | μA |
| I _{CCZ} | | | 1.1 to 3.6 | 1.1 to 3.6 | - | 20 | μA |
| I _{CCA} | | V _I = V _{CCA} or GND; I _O = 0 | 0 | 1.1 to 3.6 | - | -10 | μA |
| | | | 1.1 to 3.6 | 0 | - | 10 | |
| I _{CCB} | | V _I = V _{CCB} or GND; I _O = 0 | 1.1 to 3.6 | 0 | - | -10 | μA |
| | 0 | | 1.1 to 3.6 | - | 10 | | |
| ΔI _{CCA/B} | Increase in I _{CC} per Input; Other Inputs at V _{CC} or GND | V _{IH} = 3.0 | 3.6 | 3.6 | - | 500 | μA |

Product parametric performance is indicated in the Electrical Characteristics for the listed test conditions, unless otherwise noted. Product performance may not be indicated by the Electrical Characteristics if operated under different conditions.

3. V_{CCI} = the V_{CC} associated with the data input under test.
4. V_{CCO} = the V_{CC} associated with the output under test.
5. An external driver must source at least the specified current to switch LOW-to-HIGH.
6. An external driver must source at least the specified current to switch HIGH-to-LOW.
7. Don't care = any valid logic level.
8. Reflects current per supply, V_{CCA} or V_{CCB}.

AC ELECTRICAL CHARACTERISTICS

V_{CCA} = 3.0 V to 3.6 V

| Symbol | Parameter | T _A = -40°C to +85°C | | | | | | | | | | Unit |
|-------------------------------------|-------------------------------------|-----------------------------------|-----|-----------------------------------|-----|-------------------------------------|-----|-----------------------------------|-----|-----------------------------------|------|------|
| | | V _{CCB} = 3.0 V to 3.6 V | | V _{CCB} = 2.3 V to 2.7 V | | V _{CCB} = 1.65 V to 1.95 V | | V _{CCB} = 1.4 V to 1.6 V | | V _{CCB} = 1.1 V to 1.3 V | | |
| | | Min | Max | Min | Max | Min | Max | Min | Max | Min | Max | |
| t _{PLH} , t _{PHL} | Propagation Delay A to B | 0.5 | 3.9 | 0.5 | 4.5 | 0.9 | 5.9 | 1.0 | 7.4 | 1.6 | 22.0 | ns |
| | Propagation Delay B to A | 0.2 | 3.5 | 0.2 | 3.8 | 0.3 | 4.0 | 0.5 | 4.3 | 0.8 | 13.0 | |
| t _{PZL} , t _{PZH} | Output Enable \overline{OE} -to-B | 0.7 | 4.8 | 1.0 | 5.1 | 1.5 | 6.7 | 1.5 | 7.1 | 2.0 | 18.0 | ns |
| | Output Enable \overline{OE} -to-A | 0.5 | 4.0 | 0.5 | 4.0 | 0.5 | 4.0 | 0.5 | 4.0 | 0.5 | 4.0 | |
| t _{PHZ} , t _{PZL} | Output Enable \overline{OE} -to-B | 0.4 | 4.3 | 0.4 | 4.4 | 0.9 | 5.2 | 1.7 | 6.8 | 2.0 | 19.0 | ns |
| | Output Enable \overline{OE} -to-A | 0.2 | 3.7 | 0.2 | 3.7 | 0.2 | 3.7 | 0.2 | 3.7 | 0.2 | 3.7 | |

FXLH42245

AC ELECTRICAL CHARACTERISTICS (continued)

V_{CCA} = 2.3 V to 2.7 V

| Symbol | Parameter | T _A = -40°C to +85°C | | | | | | | | | | Unit |
|-------------------------------------|-------------------------------------|-----------------------------------|-----|-----------------------------------|-----|-------------------------------------|-----|-----------------------------------|-----|-----------------------------------|------|------|
| | | V _{CCB} = 3.0 V to 3.6 V | | V _{CCB} = 2.3 V to 2.7 V | | V _{CCB} = 1.65 V to 1.95 V | | V _{CCB} = 1.4 V to 1.6 V | | V _{CCB} = 1.1 V to 1.3 V | | |
| | | Min | Max | Min | Max | Min | Max | Min | Max | Min | Max | |
| t _{PLH} , t _{PHL} | Propagation Delay A to B | 0.5 | 4.3 | 0.6 | 4.8 | 0.9 | 6.0 | 1.0 | 7.6 | 1.6 | 22.0 | ns |
| | Propagation Delay B to A | 0.3 | 3.9 | 0.4 | 4.2 | 0.5 | 4.5 | 0.5 | 4.8 | 1.0 | 7.0 | |
| t _{PZL} , t _{PZH} | Output Enable \overline{OE} -to-B | 0.8 | 5.1 | 1.0 | 5.5 | 1.5 | 6.9 | 1.5 | 7.4 | 2.0 | 19.0 | ns |
| | Output Enable \overline{OE} -to-A | 0.6 | 4.5 | 0.6 | 4.5 | 0.6 | 4.5 | 0.6 | 4.5 | 0.6 | 4.5 | |
| t _{PHZ} , t _{PZL} | Output Enable \overline{OE} -to-B | 0.4 | 4.6 | 0.4 | 4.8 | 0.9 | 5.3 | 1.7 | 7.1 | 2.0 | 19.0 | ns |
| | Output Enable \overline{OE} -to-A | 0.2 | 4.0 | 0.2 | 4.0 | 0.2 | 4.0 | 0.2 | 4.0 | 0.2 | 4.0 | |

V_{CCA} = 1.65 V to 1.95 V

| Symbol | Parameter | T _A = -40°C to +85°C | | | | | | | | | | Unit |
|-------------------------------------|-------------------------------------|-----------------------------------|-----|-----------------------------------|-----|-------------------------------------|-----|-----------------------------------|-----|-----------------------------------|------|------|
| | | V _{CCB} = 3.0 V to 3.6 V | | V _{CCB} = 2.3 V to 2.7 V | | V _{CCB} = 1.65 V to 1.95 V | | V _{CCB} = 1.4 V to 1.6 V | | V _{CCB} = 1.1 V to 1.3 V | | |
| | | Min | Max | Min | Max | Min | Max | Min | Max | Min | Max | |
| t _{PLH} , t _{PHL} | Propagation Delay A to B | 0.5 | 4.6 | 0.7 | 5.1 | 1.1 | 6.2 | 1.1 | 7.8 | 1.7 | 22.0 | ns |
| | Propagation Delay B to A | 0.5 | 5.4 | 0.5 | 5.6 | 0.8 | 5.7 | 1.0 | 6.0 | 1.2 | 8.0 | |
| t _{PZL} , t _{PZH} | Output Enable \overline{OE} -to-B | 0.8 | 5.4 | 1.0 | 5.9 | 1.5 | 7.3 | 1.5 | 7.7 | 2.0 | 20.0 | ns |
| | Output Enable \overline{OE} -to-A | 1.0 | 6.7 | 1.0 | 6.7 | 1.0 | 6.7 | 1.0 | 6.7 | 1.0 | 6.7 | |
| t _{PHZ} , t _{PZL} | Output Enable \overline{OE} -to-B | 0.4 | 4.7 | 0.4 | 4.9 | 1.0 | 5.4 | 1.7 | 7.2 | 2.0 | 19.0 | ns |
| | Output Enable \overline{OE} -to-A | 0.5 | 5.0 | 0.5 | 5.0 | 0.5 | 5.0 | 0.5 | 5.0 | 0.5 | 5.0 | |

FXLH42245

AC ELECTRICAL CHARACTERISTICS (continued)

V_{CCA} = 1.4 V to 1.6 V

| Symbol | Parameter | T _A = -40°C to +85°C | | | | | | | | | | Unit |
|-------------------------------------|-------------------------------------|-----------------------------------|-----|-----------------------------------|-----|-------------------------------------|-----|-----------------------------------|-----|-----------------------------------|------|------|
| | | V _{CCB} = 3.0 V to 3.6 V | | V _{CCB} = 2.3 V to 2.7 V | | V _{CCB} = 1.65 V to 1.95 V | | V _{CCB} = 1.4 V to 1.6 V | | V _{CCB} = 1.1 V to 1.3 V | | |
| | | Min | Max | Min | Max | Min | Max | Min | Max | Min | Max | |
| t _{PLH} , t _{PHL} | Propagation Delay A to B | 0.7 | 4.8 | 0.8 | 5.3 | 1.2 | 6.4 | 1.3 | 7.9 | 1.7 | 22.0 | ns |
| | Propagation Delay B to A | 0.6 | 6.8 | 0.8 | 6.9 | 0.9 | 7.1 | 1.0 | 7.3 | 1.2 | 9.5 | |
| t _{PZL} , t _{PZH} | Output Enable \overline{OE} -to-B | 1.1 | 5.8 | 1.3 | 6.3 | 1.5 | 7.8 | 2.0 | 8.1 | 2.0 | 20.0 | ns |
| | Output Enable \overline{OE} -to-A | 1.0 | 7.5 | 1.0 | 7.5 | 1.0 | 7.5 | 1.0 | 7.5 | 1.0 | 7.5 | |
| t _{PHZ} , t _{PZL} | Output Enable \overline{OE} -to-B | 0.6 | 4.8 | 0.6 | 5.1 | 1.1 | 5.8 | 2.0 | 7.7 | 2.0 | 18.0 | ns |
| | Output Enable \overline{OE} -to-A | 1.0 | 6.0 | 1.0 | 6.0 | 1.0 | 6.0 | 1.0 | 6.0 | 0.5 | 6.0 | |

V_{CCA} = 1.1 V to 1.3 V

| Symbol | Parameter | T _A = -40°C to +85°C | | | | | | | | | | Unit |
|-------------------------------------|-------------------------------------|-----------------------------------|------|-----------------------------------|------|-------------------------------------|------|-----------------------------------|------|-----------------------------------|------|------|
| | | V _{CCB} = 3.0 V to 3.6 V | | V _{CCB} = 2.3 V to 2.7 V | | V _{CCB} = 1.65 V to 1.95 V | | V _{CCB} = 1.4 V to 1.6 V | | V _{CCB} = 1.1 V to 1.3 V | | |
| | | Min | Max | Min | Max | Min | Max | Min | Max | Min | Max | |
| t _{PLH} , t _{PHL} | Propagation Delay A to B | 1.0 | 13.8 | 1.0 | 7.8 | 1.0 | 8.4 | 1.0 | 10.4 | 2.0 | 24.0 | ns |
| | Propagation Delay B to A | 1.4 | 22.0 | 1.4 | 22.0 | 1.5 | 22.0 | 1.5 | 22.0 | 2.0 | 24.0 | |
| t _{PZL} , t _{PZH} | Output Enable \overline{OE} -to-B | 1.5 | 12.6 | 1.5 | 9.6 | 1.5 | 10.6 | 2.0 | 11.6 | 2.0 | 24.0 | ns |
| | Output Enable \overline{OE} -to-A | 2.0 | 22.0 | 2.0 | 22.0 | 2.0 | 22.0 | 2.0 | 22.0 | 2.0 | 22.0 | |
| t _{PHZ} , t _{PZL} | Output Enable \overline{OE} -to-B | 1.2 | 15.0 | 0.9 | 7.6 | 1.2 | 8.6 | 2.0 | 10.6 | 3.0 | 21.0 | ns |
| | Output Enable \overline{OE} -to-A | 2.0 | 15.0 | 2.0 | 12.0 | 2.0 | 12.0 | 2.0 | 12.0 | 2.0 | 12.0 | |

Product parametric performance is indicated in the Electrical Characteristics for the listed test conditions, unless otherwise noted. Product performance may not be indicated by the Electrical Characteristics if operated under different conditions.

CAPACITANCE

| Symbol | Parameter | Conditions | Typical (T _A = 25°C) | Unit |
|------------------|---|---|---------------------------------|------|
| C _{IN} | Input Capacitance Control Pins (\overline{OE} , T/R) | V _{CCA} = V _{CCB} = 3.3 V, V _I = 0 V or V _{CCA/B} | 4 | pF |
| C _{I/O} | Input / Output Capacitance A _n , B _n Port | V _{CCA} = V _{CCB} = 3.3 V, V _I = 0 V or V _{CCA/B} | 5 | pF |
| C _{PD} | Power Dissipation Capacitance | V _{CCA} = V _{CCB} = 3.3 V, V _I = 0 V or V _{CC} , f = 10 MHz | 20 | pF |

FXLH42245

AC LOADINGS AND WAVEFORMS

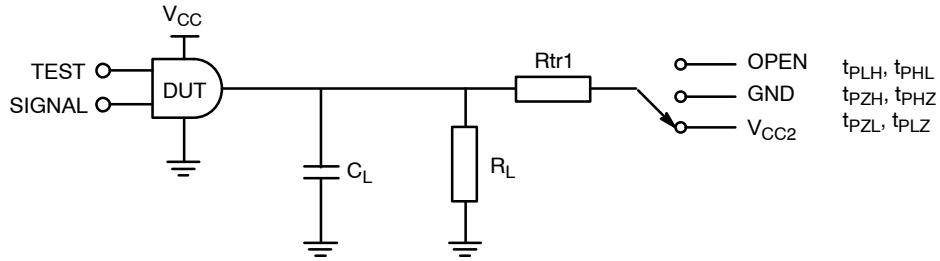


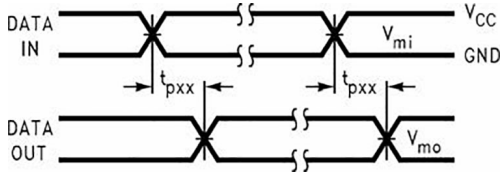
Figure 2. AC Test Circuit

Table 1. TEST CIRCUIT PARAMETERS

| Test | Switch |
|--------------------|---|
| t_{PLH}, t_{PHL} | Open |
| t_{PLZ}, t_{PZL} | $V_{CC0} \bullet 2$ at $V_{CC0} = 3.3 \text{ V} \pm 0.3 \text{ V}, 2.5 \text{ V} \pm 0.2 \text{ V}, 1.8 \text{ V} \pm 0.15 \text{ V}, 1.5 \text{ V} \pm 0.1 \text{ V}, 1.2 \text{ V} \pm 0.1 \text{ V}$ |
| t_{PHZ}, t_{PZH} | GND |

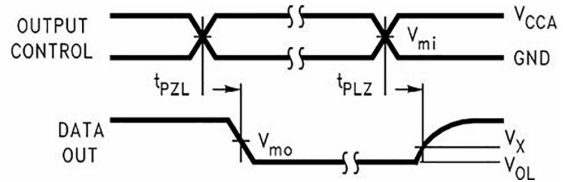
Table 2. AC LOAD TABLE

| V_{CC0} | C_L | R_L | R_{tr1} |
|------------------------------------|-------|--------------|--------------|
| $1.2 \text{ V} \pm 0.1 \text{ V}$ | 15 pF | 2 k Ω | 2 k Ω |
| $1.5 \text{ V} \pm 0.1 \text{ V}$ | 15 pF | 2 k Ω | 2 k Ω |
| $1.8 \text{ V} \pm 0.15 \text{ V}$ | 30 pF | 500 Ω | 500 Ω |
| $2.5 \text{ V} \pm 0.2 \text{ V}$ | 30 pF | 500 Ω | 500 Ω |
| $3.3 \text{ V} \pm 0.3 \text{ V}$ | 30 pF | 500 Ω | 500 Ω |



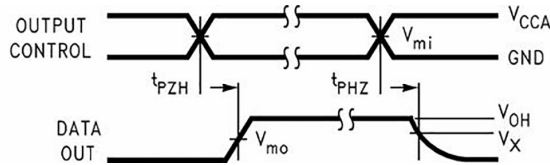
9. Input $t_R = t_F = 2.0 \text{ ns}$, 10% to 90%

Figure 3. Waveform for Inverting and Non-Inverting Functions



10. Input $t_R = t_F = 2.0 \text{ ns}$, 10% to 90%

Figure 4. 3-State Output High Enable and Disable for Low Voltage Logic



11. Input $t_R = t_F = 2.0 \text{ ns}$, 10% to 90%

Figure 5. 3-State Output High Enable and Disable for Low Voltage Logic

Table 3.

| Symbol | V _{CC} | | | | |
|-----------------|-------------------------|--------------------------|--------------------------|-------------------------|-------------------------|
| | 3.3 V ± 0.3 V | 2.5 V ± 0.2 V | 1.8 V ± 0.15 V | 1.5 V ± 0.1 V | 1.2 V ± 0.1 V |
| V _{MI} | V _{CCI} /2 | V _{CCI} /2 | V _{CCI} /2 | V _{CCI} /2 | V _{CCI} /2 |
| V _{MO} | V _{CCO} /2 | V _{CCO} /2 | V _{CCO} /2 | V _{CCO} /2 | V _{CCO} /2 |
| V _X | V _{OH} - 0.3 V | V _{OH} - 0.15 V | V _{OH} - 0.15 V | V _{OH} - 0.1 V | V _{OH} - 0.1 V |
| V _Y | V _{OL} + 0.3 V | V _{OL} + 0.15 V | V _{OL} + 0.15 V | V _{OL} + 0.1 V | V _{OL} + 0.1 V |

12. For V_{MI} V_{CCO} = V_{CCA} for control pins T/ \bar{R} and \bar{OE} or V_{CCA}/2.

FUNCTIONAL DESCRIPTION

Power-Up/Power-Down Sequencing

FXL translators offer an advantage in that either V_{CC} may be powered up first. This benefit derives from the chip design. When either V_{CC} is at 0 V, outputs are in a High-impedance state. The control inputs (T/ \bar{R} and \bar{OE}) are designed to track the V_{CCA} supply. A pull-up resistor tying \bar{OE} to V_{CCA} should be used to ensure that bus contention, excessive currents, or oscillations do not occur during power-up/power-down. The size of the pull-up resistor is based upon the current-sinking capability of the OE driver.

The recommended power-up sequence is:

1. Apply power to either V_{CC}.
2. Apply power to the T/ \bar{R} input (logic HIGH for A-to-B operation; logic LOW for B-to-A operation) and to the respective data inputs (A port or B port). This may occur at the same time as step 1.
3. Apply power to the other V_{CC}.
4. Drive the \bar{OE} input LOW to enable the device.

The recommended power-down sequence is:

1. Drive \bar{OE} input HIGH to disable the device.
2. Remove power from either V_{CC}.
3. Remove power from the other V_{CC}.

MECHANICAL CASE OUTLINE

PACKAGE DIMENSIONS

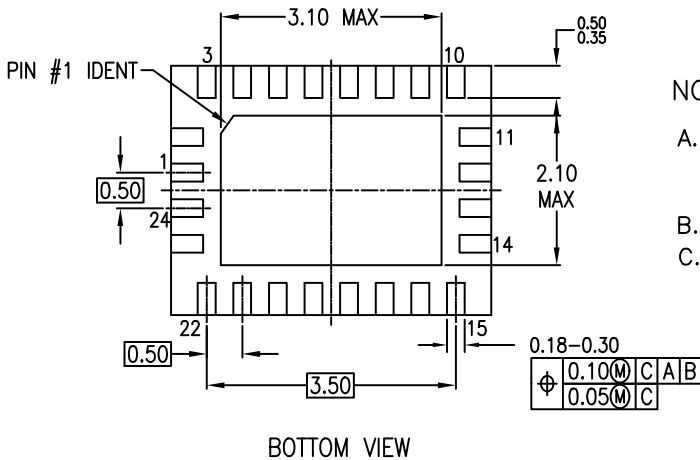
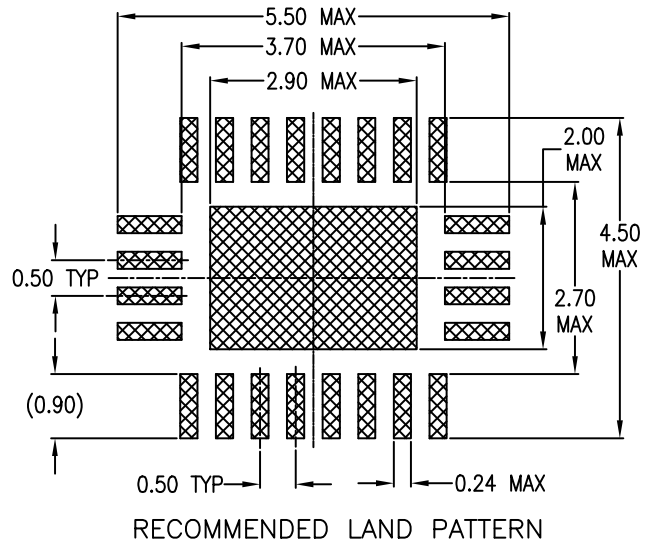
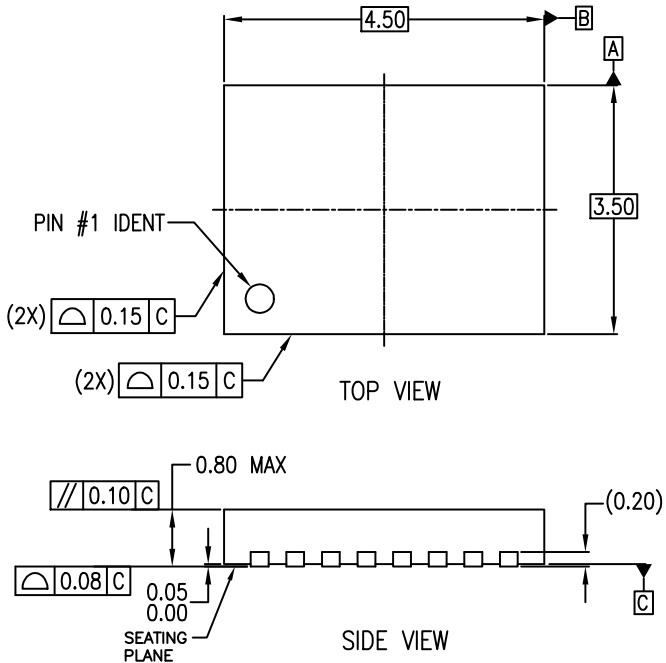
ON Semiconductor®



WQFN24 4.5x3.5, 0.5P

CASE 510CE
ISSUE O

DATE 31 AUG 2016



NOTES:

- A. CONFORMS TO JEDEC REGISTRATION MO-220, VARIATION WFSD-2 FOR DIMENSIONS ONLY. PIN NUMBERING DOES NOT COMPLY.
- B. DIMENSIONS ARE IN MILLIMETERS.
- C. DIMENSIONS AND TOLERANCES PER ASME Y14.5M, 1994

| | | |
|-------------------------|-----------------------------|--|
| DOCUMENT NUMBER: | 98AON13646G | Electronic versions are uncontrolled except when accessed directly from the Document Repository. Printed versions are uncontrolled except when stamped "CONTROLLED COPY" in red. |
| DESCRIPTION: | WQFN24 4.5X3.5, 0.5P | PAGE 1 OF 1 |

ON Semiconductor and are trademarks of Semiconductor Components Industries, LLC dba ON Semiconductor or its subsidiaries in the United States and/or other countries. ON Semiconductor reserves the right to make changes without further notice to any products herein. ON Semiconductor makes no warranty, representation or guarantee regarding the suitability of its products for any particular purpose, nor does ON Semiconductor assume any liability arising out of the application or use of any product or circuit, and specifically disclaims any and all liability, including without limitation special, consequential or incidental damages. ON Semiconductor does not convey any license under its patent rights nor the rights of others.

onsemi, **Onsemi**, and other names, marks, and brands are registered and/or common law trademarks of Semiconductor Components Industries, LLC dba "**onsemi**" or its affiliates and/or subsidiaries in the United States and/or other countries. **onsemi** owns the rights to a number of patents, trademarks, copyrights, trade secrets, and other intellectual property. A listing of **onsemi**'s product/patent coverage may be accessed at www.onsemi.com/site/pdf/Patent-Marking.pdf. **onsemi** reserves the right to make changes at any time to any products or information herein, without notice. The information herein is provided "as-is" and **onsemi** makes no warranty, representation or guarantee regarding the accuracy of the information, product features, availability, functionality, or suitability of its products for any particular purpose, nor does **onsemi** assume any liability arising out of the application or use of any product or circuit, and specifically disclaims any and all liability, including without limitation special, consequential or incidental damages. Buyer is responsible for its products and applications using **onsemi** products, including compliance with all laws, regulations and safety requirements or standards, regardless of any support or applications information provided by **onsemi**. "Typical" parameters which may be provided in **onsemi** data sheets and/or specifications can and do vary in different applications and actual performance may vary over time. All operating parameters, including "Typicals" must be validated for each customer application by customer's technical experts. **onsemi** does not convey any license under any of its intellectual property rights nor the rights of others. **onsemi** products are not designed, intended, or authorized for use as a critical component in life support systems or any FDA Class 3 medical devices or medical devices with a same or similar classification in a foreign jurisdiction or any devices intended for implantation in the human body. Should Buyer purchase or use **onsemi** products for any such unintended or unauthorized application, Buyer shall indemnify and hold **onsemi** and its officers, employees, subsidiaries, affiliates, and distributors harmless against all claims, costs, damages, and expenses, and reasonable attorney fees arising out of, directly or indirectly, any claim of personal injury or death associated with such unintended or unauthorized use, even if such claim alleges that **onsemi** was negligent regarding the design or manufacture of the part. **onsemi** is an Equal Opportunity/Affirmative Action Employer. This literature is subject to all applicable copyright laws and is not for resale in any manner.

PUBLICATION ORDERING INFORMATION

LITERATURE FULFILLMENT:

Email Requests to: orderlit@onsemi.com

onsemi Website: www.onsemi.com

TECHNICAL SUPPORT

North American Technical Support:

Voice Mail: 1 800-282-9855 Toll Free USA/Canada

Phone: 011 421 33 790 2910

Europe, Middle East and Africa Technical Support:

Phone: 00421 33 790 2910

For additional information, please contact your local Sales Representative

Mouser Electronics

Authorized Distributor

Click to View Pricing, Inventory, Delivery & Lifecycle Information:

[onsemi:](#)

[FXLH42245MPX](#)