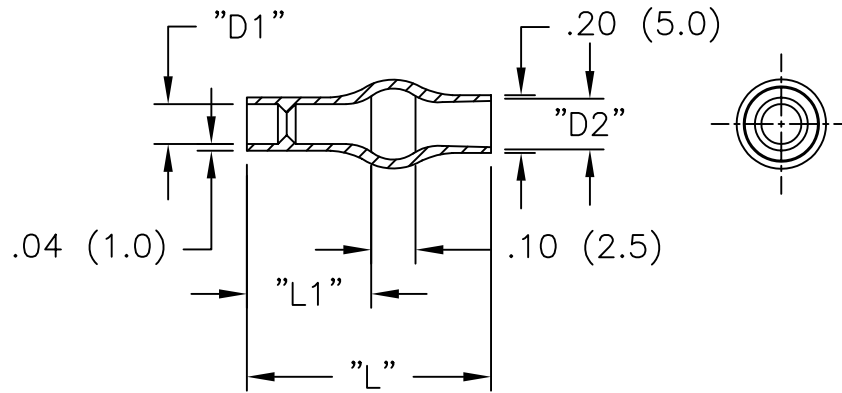


PART #	WIRE O.D. RANGE	WIRE Ga.	"D1"	"D2"	"L1" ±.04 (±1.0)	"L" ±.04 (±1.0)
224225	.058-.091	22-18	.10 (2.5)	.16 (4.0)	.24 (6.0)	.51 (13.0)
224228	.058-.091	22-18	.11 (2.8)	.18 (4.5)	.28 (7.0)	.51 (13.0)
224230	.068-.113	20-18	.12 (3.0)	.16 (4.0)	.24 (6.0)	.51 (13.0)



NOTES:

1. MATERIAL: SOFT PVC (RMS-55).
2. COLOR: TRANSPARENT BLUE.

REV	DESCRIPTION	ENGR	DATE
C	SEE CO 200041 FOR CHANGES	SK	09.28.07
B	SEE ECN #863 FOR CHANGES	SM	10.04.04
A	CHANGED FILE NO. AND TITLE BLOCK	SM	03.21.02

TITLE: INSULATING SLEEVE FOR PIN PLUG				DWG IN IN (MM)	FINAL	PRINT TYPE
TOLERANCES UNLESS NOTED .XX=±.010 .XXX=±.005 FRAC=±1/64 ANG=±1°	FILE # 2242XX	DWN: D.D	APP:	PART # SEE TABLE	CA	
MAT'L: SEE NOTES	RE: RICHCO, INC.	DT: 05-21-96	DT:			
RICHCO INC. PO BOX 804238, CHICAGO, 60680 (773) 539-4060						

Mouser Electronics

Authorized Distributor

Click to View Pricing, Inventory, Delivery & Lifecycle Information:

[Essentra:](#)

[224225](#) [224230](#)