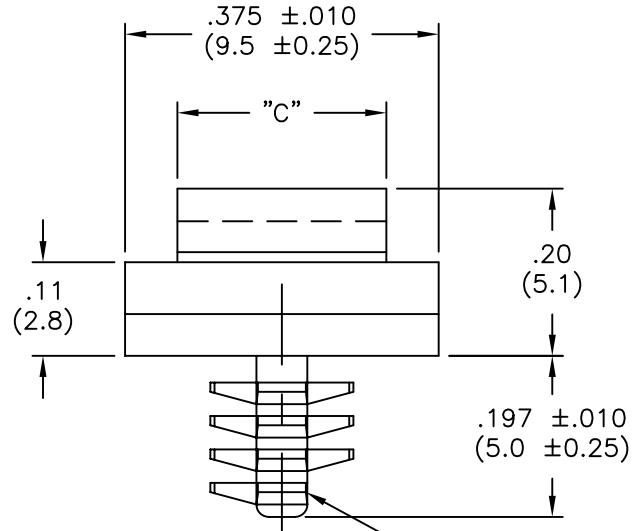
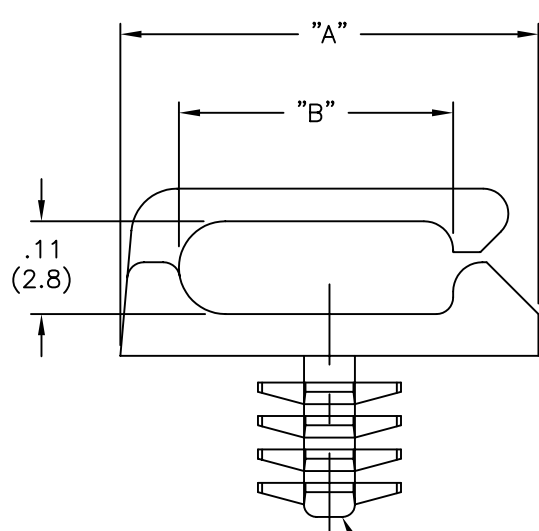


PART NO.	"A"±.010 (±0.25)	"B"±.010 (±0.25)	"C"±.010 (±0.25)
MBHWSSE-1-01	.50 (12.7)	.33 (8.3)	.25 (6.4)
MBHWSSE1-1-01	.67 (17.0)	.49 (12.5)	.315 (8.0)



TO PRESS FIT IN A .156±.003  
(3.96±0.08) DIA. HOLE, IN A  
.04 TO .16 (1.00 TO 4.06)  
THICK PANEL.

TYPICAL EJECTOR  
PIN LOCATION  
(SEE NOTE 3.)

NOTES:

1. MATERIAL: NYLON 6/6, RMS-01.  
FLAME RETARDANT NYLON (RMS-19)  
AVAILABLE BY SPECIAL ORDER.
2. COLOR: NATURAL.
3. FIN WILL ONLY APPEAR ON LEFT  
OR RIGHT SIDE, IN THIS VIEW

TITLE: MICRO-BLIND HOLE, WIRE SADDLE, SIDE ENTRY				DWG IN IN (MM)		FINAL		PRINT TYPE	
TOLERANCES UNLESS NOTED .XX=±.010 .XXX=±.005 FRAC=1/64 ANG=1°		FILE # MBHWSSE	DWN: S.M.	APP:		PART #		CA	
MAT'L: SEE NOTES		RE: RICHCO, INC.	DT: 3/23/01	DT:		SEE TABLE			
RICHCO INC. PO BOX 804238, CHICAGO, 60680 (773) 539-4060									

REV	DESCRIPTION	ENGR	DATE
B	SEE ECN #1354 FOR CHANGES	SK	08.20.07
A	SEE ECN #503 FOR CHANGES	SM	10.25.02

# Mouser Electronics

Authorized Distributor

Click to View Pricing, Inventory, Delivery & Lifecycle Information:

Essentra:

[MBHWSSE-1-01](#) [MBHWSSE1-1-01](#)