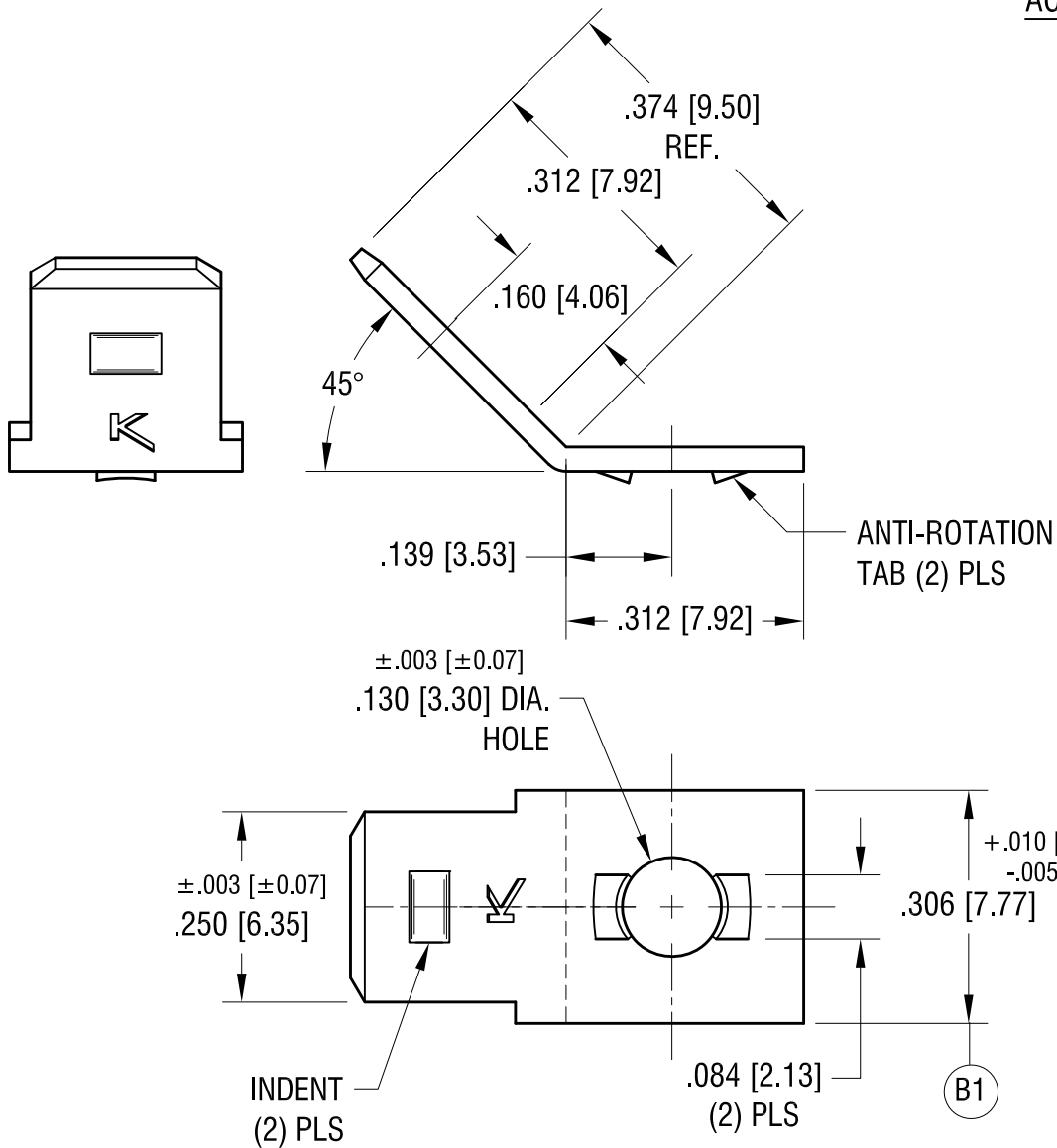
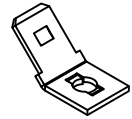


THIS DOCUMENT IS THE PROPERTY OF
KEYSTONE ELECTRONICS CORP. AND
SHALL NOT BE REPRODUCED, DISTRIBUTED
OR USED AS A BASIS FOR MANUFACTURE
WITHOUT PRIOR WRITTEN PERMISSION
FROM KEYSTONE ELECTRONICS CORP.

ACTUAL SIZE



KEYSTONE ELECTRONICS CORP.

www.keyelco.com • NEW HYDE PARK, NY 11040 • Tel (516) 328-7500

PART NAME
.250 QUICK-FIT TERMINAL

MATERIAL
.032 [0.81] TH'K BRASS

FINISH MATTE TIN	DRN BY NT	DATE 8.02.10
	APP'D LN	SCALE 4X

TOLERANCES INCH [MM] DECIMAL $\pm .005$ [± 0.13] ANGULAR $\pm 1^\circ$ UNLESS OTHERWISE SPECIFIED	CODE C	DWG NO. 1235
------------------------------------------------------------------------------------------------------------------	------------------	------------------------

1.30.19	(B1) WAS .306±.005 CHANGE AS PER ECN 19-014	B
1.27.16	CHANGE AS PER ECN 16-015	A
DATE	DESCRIPTION	REV.

Mouser Electronics

Authorized Distributor

Click to View Pricing, Inventory, Delivery & Lifecycle Information:

[Keystone Electronics:](#)

[1235](#)