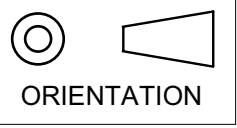


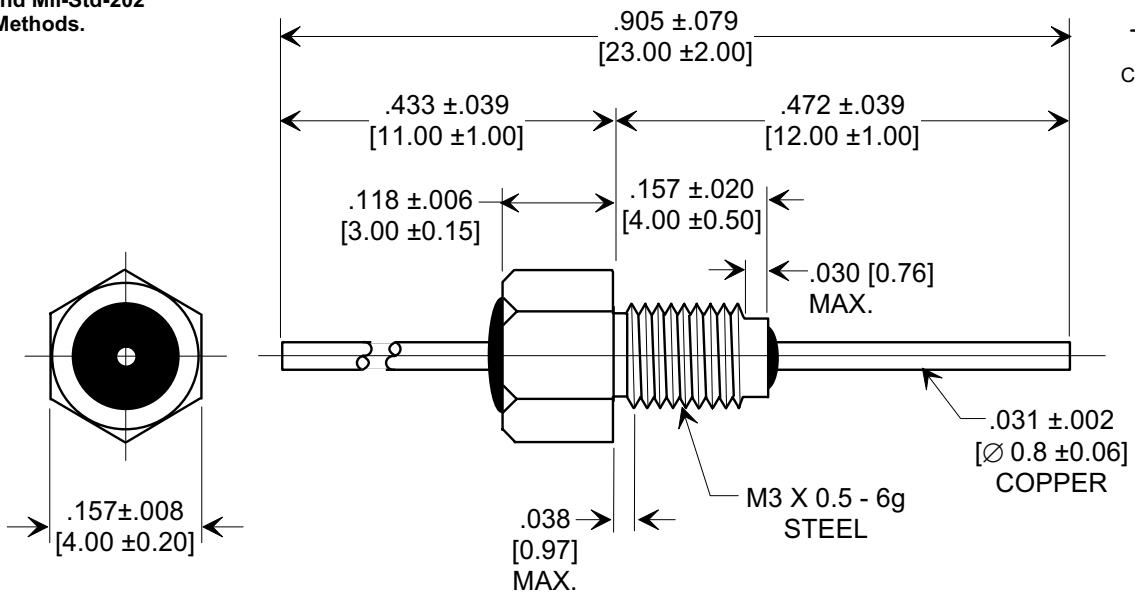
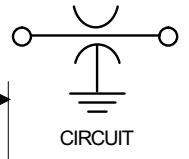
# MARKETING SALES DRAWING

**DIMENSIONS IN INCHES - DO NOT SCALE THIS DRAWING**  
**DIMENSIONS IN METRIC [ ]**

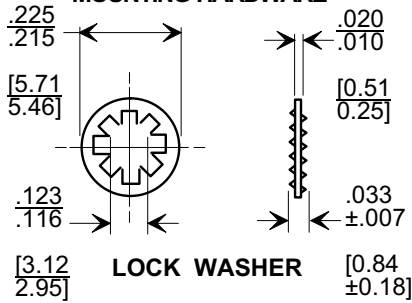
This drawing is the property of Tusonix, Inc., and may not be used, reproduced, published or disclosed to others without expressed authorization by Tusonix Inc.



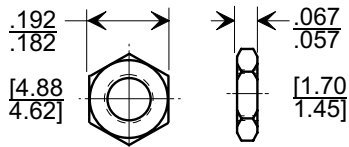
**Electrical Testing per Tusonix standard test plans and Mil-Std-202 Test Methods.**



**MOUNTING HARDWARE**



**LOCK WASHER**



**HEX NUT**

**NOTES:**

1. OPERATING TEMP. RANGE: -55°C TO +125°C.
2. SILVER PLATED CASE, LEAD, LOCK WASHER, AND HEX NUT.
3. MAX. RECOMMENDED MOUNTING TORQUE : 2.0 lb. - in. [0.23 Nm].
4. MAX. RECOMMENDED SOLDERING TEMPERATURE : 260° C. SEE INSTALLATION RECOMMENDATIONS.
5. NUT AND LOCK WASHER INCLUDED.
6. TUSONIX STANDARD PART NUMBER: 4400-683. TUSONIX RoHS COMPLIANT PART NUMBER: 4400-683 LF. CUSTOMER MUST SPECIFY STANDARD OR RoHS PART NUMBER WHEN ORDERING.
7. PART MARKING: TRADEMARK AND VARIATION NUMBER ON HEX FLATS. STANDARD PART: BLACK INK. RoHS PART: DARK GREEN INK FOR IDENTIFICATION.

CAP.(pf)	TOLERANCE	DC WORKING VOLTAGE		DC CURRENT (AMPS)	DWV (VDC)	MIN. NO LOAD INSERTION LOSS (db) @ 25°C PER MIL-STD-220				
		85°C	125 °C			1 MHz	10 MHz	100 MHz	1 GHz	10 GHz
5	MAX	300	200	10	500	----	----	----	----	----

X-2015 Rev-0	<b>REVISION RECORD</b>
	Original Release C.O. <b>20000104-1-04</b>
	ADDED AND REVISED NOTES. S.M. 02-14-06
	<b>20060123-9-04</b>

	<p><b>--TOLERANCES--</b> Unless Otherwise Specified</p> <p>DECIMAL ± NOTED</p> <p>ANGLES ± </p>
<p><b>TUSONIX</b> TUCSON, ARIZONA</p>	

Title	
<b>LINE FEED-THRU</b>	
Drawn	S.M. 01-07-00
Scale	5 X
Approved	J.Mc. 01-07-00
<b>A</b>	<b>4400-683</b>

# Mouser Electronics

Authorized Distributor

Click to View Pricing, Inventory, Delivery & Lifecycle Information:

[Tusonix / CTS:](#)

[4400-683LF](#)