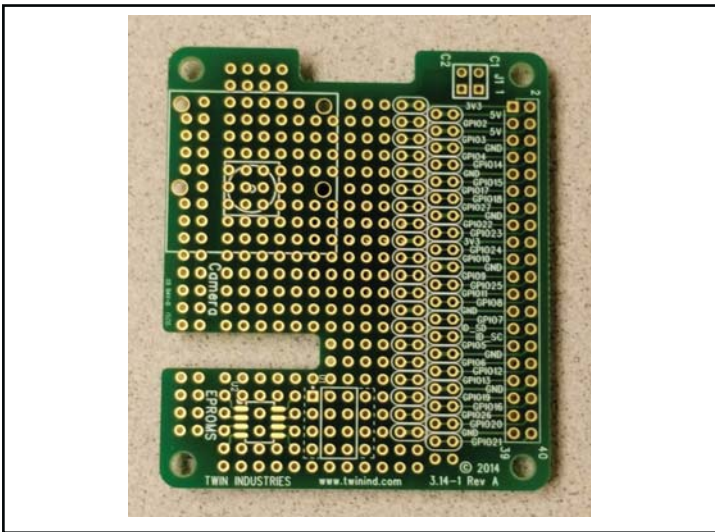




Twin Industries prototyping boards designed specifically for Raspberry Pi projects. A great head start for modifying and enhancing Raspberry Pi computers. Mounting holes are provided to attach boards to Raspberry Pi computers. Uncommitted board area for mounting additional components. Cut outs for camera and display cables.

Features:

- Protoboards for use with Raspberry Pi 3 Model B, 2 Model B, Model A+, and Model B+
- All 40 header signals clearly labeled for easy access to Power, Ground, and GP I/O signals
- Plated holes. Power and ground signals connected. Capacitor locations.
- Mounting holes to attach headers, standoffs, and camera unit. Footprints for EEPROMs



Part#3.14-1
Prototyping Board



Part#3.141-1 (with accessories)
Raspberry Pi B+ sold separately

Part Numbers:

3.14-1

Dim: 65mm x 56.5mm

HAT - specific

Mouser Electronics

Authorized Distributor

Click to View Pricing, Inventory, Delivery & Lifecycle Information:

[Twin Industries:](#)

[3.14-1](#)