

PLEASE CHECK WWW.MOLEX.COM FOR LATEST PART INFORMATION

Part Number: [2035551216](#)
Status: **Active**
Overview: CP Wire-to-Board and Wire-to-Wire Connector Systems
Description: CP-6.5 Header, 6.50mm Pitch, Dual Row, Right-Angle, Polarized, Through Hole, Tube Packaging, 6 Circuits, Natural

Documents:

3D Model	Test Summary 2035550001-TS-000 (PDF)
Drawing (PDF)	Datasheet (PDF)
3D Model (PDF)	Symbol Footprint Data SYM-203555-1016-001 (PDF)
Product Specification 2035550001-PS-000 (PDF)	RoHS Certificate of Compliance (PDF)
Packaging Specification 2035550001-PK-000 (PDF)	

Agency Certification

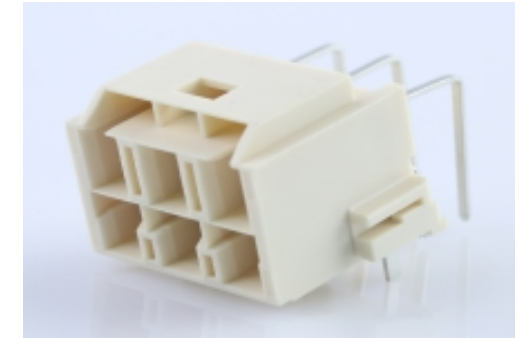
CSA	LR19980
UL	E29179

General

Product Family	PCB Headers
Series	203555
Application	Power, Wire-to-Board
Comments	See Product Specification for maximum current rating by circuit size and wire AWG
Overview	CP Wire-to-Board and Wire-to-Wire Connector Systems
Product Name	CP-6.5
UPC	191130538454

Physical

Breakaway	No
Circuits (Loaded)	6
Circuits (maximum)	6
Color - Resin	Natural
Durability (mating cycles max)	30
First Mate / Last Break	No
Flammability	94V-0
Glow-Wire Capable	Yes
Guide to Mating Part	No
Keying to Mating Part	Yes
Lock to Mating Part	Yes
Material - Metal	Copper Alloy
Material - Plating Mating	Matte Tin
Material - Plating Termination	Matte Tin
Material - Resin	Nylon
Net Weight	4.296/g
Number of Rows	2
Orientation	Right Angle
PC Tail Length	3.81mm
PCB Locator	Yes
PCB Retention	Yes
PCB Thickness - Recommended	1.60mm
Packaging Type	Tube
Pitch - Mating Interface	6.50mm
Pitch - Termination Interface	6.50mm
Plating min - Mating	1.270µm
Plating min - Termination	1.270µm
Polarized to Mating Part	Yes
Polarized to PCB	Yes



Series image - Reference only

EU ELV

Not Relevant

EU RoHS

Compliant

REACH SVHC

Not Contained Per -
D(2020)9139-DC (19
Jan 2021)

Halogen-Free

Status

Not Low-Halogen

For more information, please visit [Contact US](#)

China ROHS

ELV

RoHS Phthalates

China RoHS

Green Image

Not Relevant

Not Contained

Search Parts in this Series

[203555 Series](#)

Mates With

CP-6.5 Receptacle Housing [1512072611](#)

Temperature Range - Operating -40° to +105°C
Termination Interface: Style Through Hole

Electrical

Current - Maximum per Contact 11.8A
Voltage - Maximum 600V AC (RMS)/DC

Material Info

Reference - Drawing Numbers

Packaging Specification 2035550001-PK-000
Product Specification 2035550001-PS-000
Sales Drawing 2035551000-SD-000
Symbol/Footprint Data SYM-203555-1016-001
Test Summary 2035550001-TS-000

This document was generated on 07/05/2021

PLEASE CHECK WWW.MOLEX.COM FOR LATEST PART INFORMATION

Mouser Electronics

Authorized Distributor

Click to View Pricing, Inventory, Delivery & Lifecycle Information:

[Molex:](#)

[203555-1216](#)