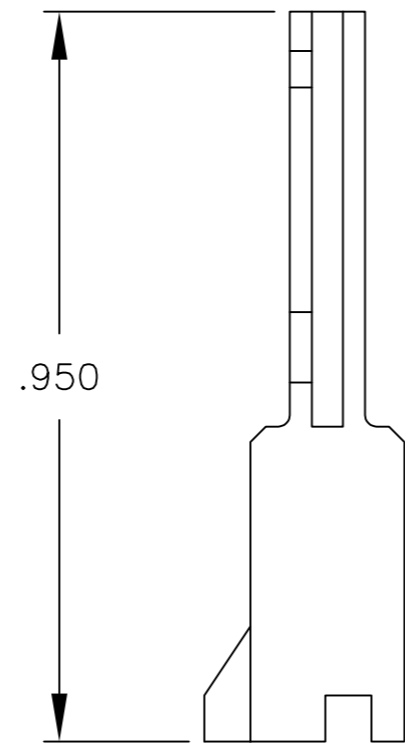
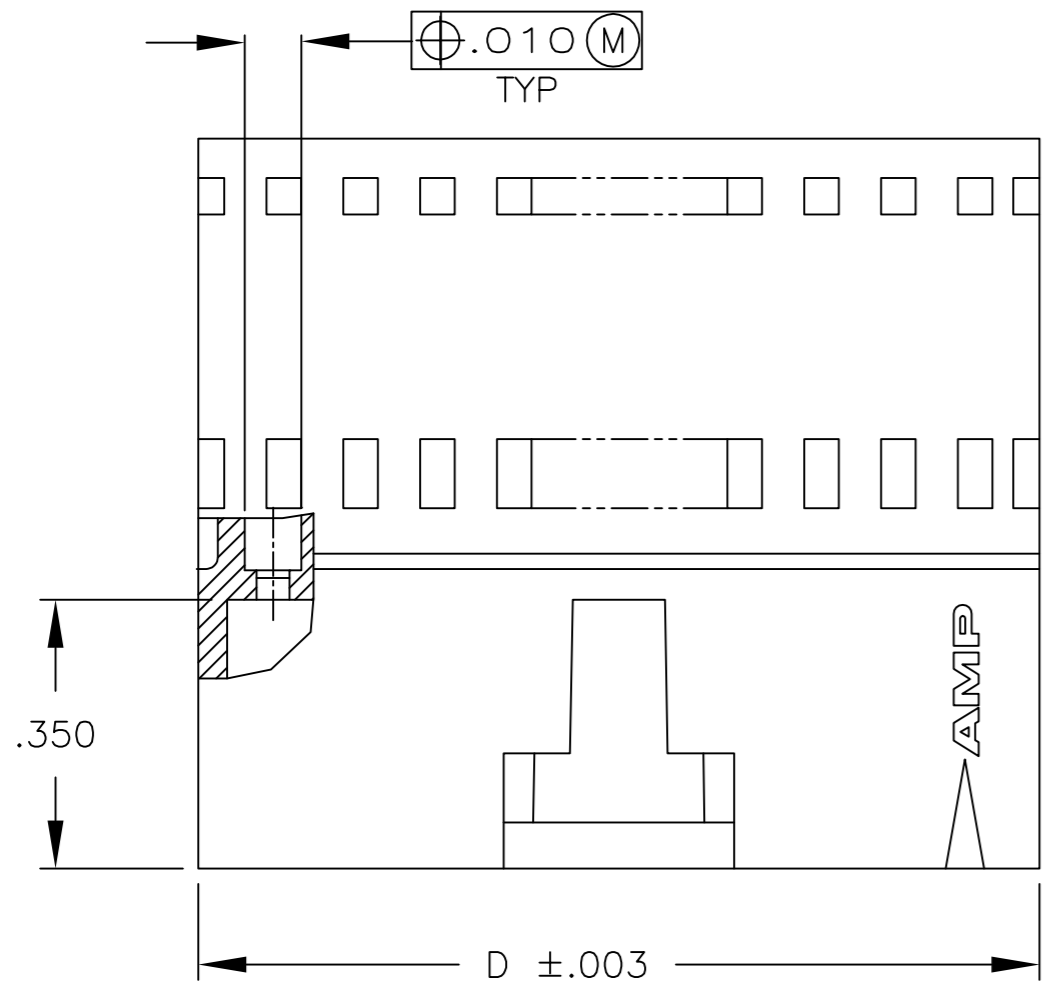
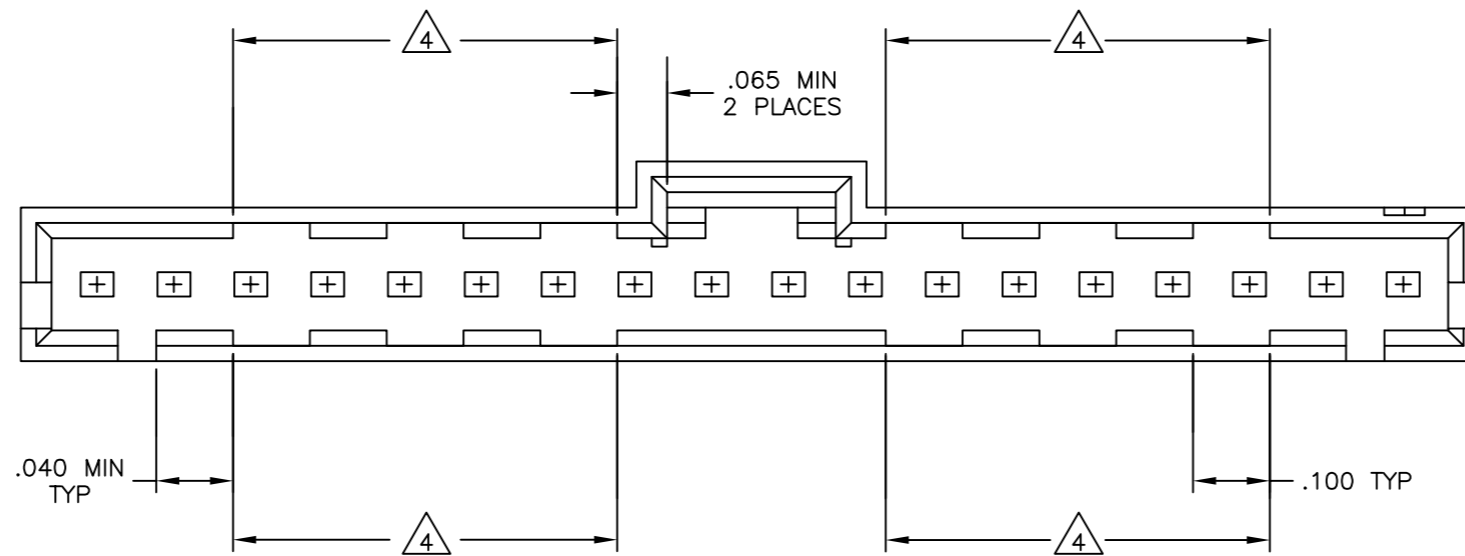
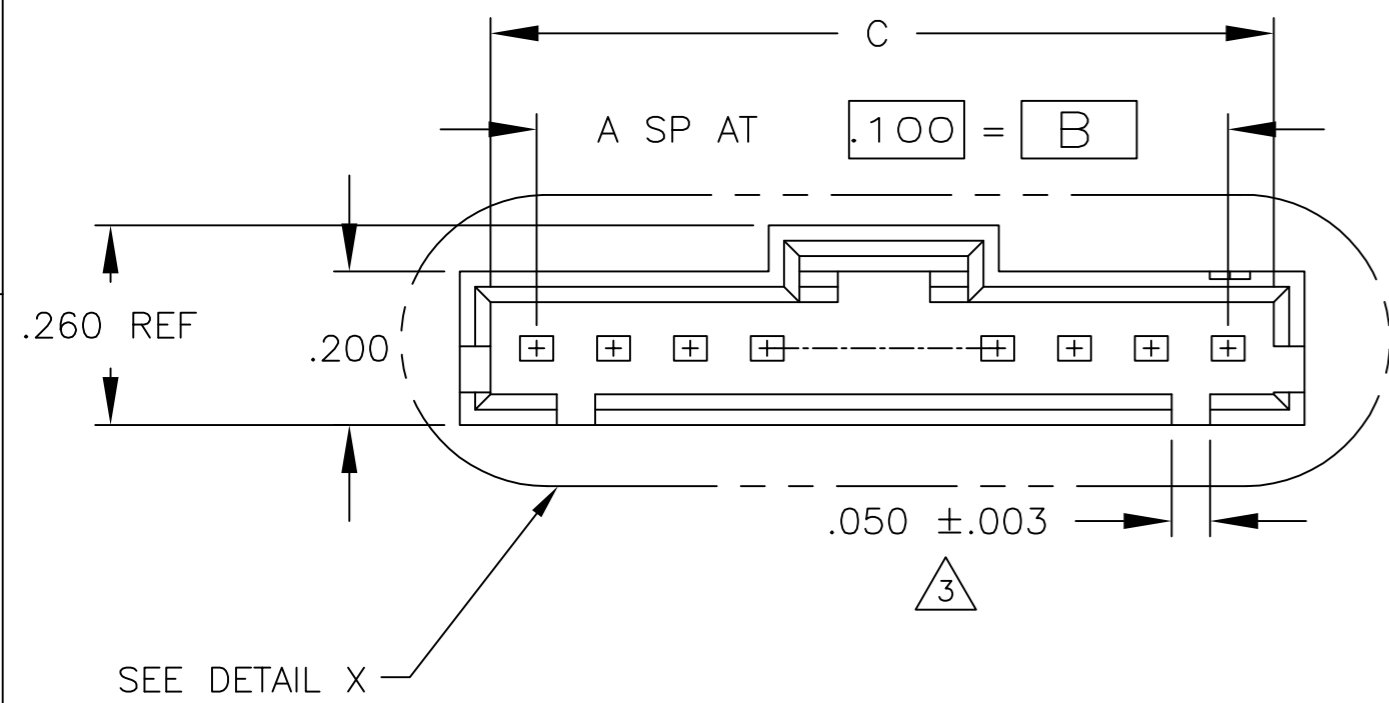


THIS DRAWING IS UNPUBLISHED. RELEASED FOR PUBLICATION
© COPYRIGHT - By - ALL RIGHTS RESERVED.

| REVISIONS | | | | | |
|-----------|-----|---------------------------|-----------|-----|------|
| P | LTR | DESCRIPTION | DATE | DWN | APVD |
| P2 | | REVISED PER ECO-11-010839 | 25MAY11 | RK | HMR |
| R | | REVISED PER ECO-17-007805 | 31MAY2017 | RS | MM |

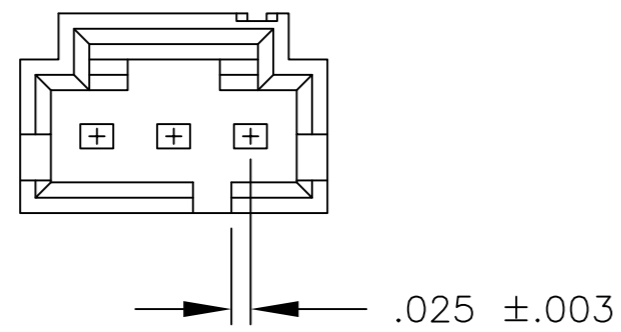
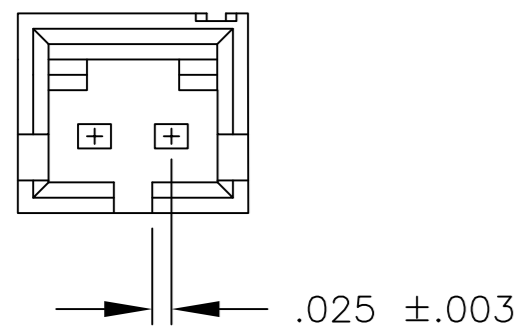


- 1 PBT.
- 2 LCP.
- 3 TOLERANCE IS $+.007/-0.003$ FOR 6 POSITION AND SMALLER SIZES.
- 4 VOID CORING IN THIS AREA OPTIONAL FOR MOLDING IMPROVEMENT.



DETAIL X
SCALE 6:1
(18 POSN SHOWN FOR CLARITY)

| | | | | | | |
|-------------|-------|-------|-------|----|------------|-------------|
| 2 | 2.595 | 2.520 | 2.400 | 24 | 25 | 2-103653-4 |
| 2 | 2.495 | 2.420 | 2.300 | 23 | 24 | 2-103653-3 |
| 2 | 2.395 | 2.320 | 2.200 | 22 | 23 | 2-103653-2 |
| 2 | 2.295 | 2.220 | 2.100 | 21 | 22 | 2-103653-1 |
| 2 | 2.195 | 2.120 | 2.000 | 20 | 21 | 2-103653-0 |
| 2 | 2.095 | 2.020 | 1.900 | 19 | 20 | 1-103653-9 |
| 2 | 1.995 | 1.920 | 1.800 | 18 | 19 | 1-103653-8 |
| 2 | 1.895 | 1.820 | 1.700 | 17 | 18 | 1-103653-7 |
| 2 | 1.795 | 1.720 | 1.600 | 16 | 17 | 1-103653-6 |
| 2 | 1.695 | 1.620 | 1.500 | 15 | 16 | 1-103653-5 |
| 2 | 1.595 | 1.520 | 1.400 | 14 | 15 | 1-103653-4 |
| 2 | 1.495 | 1.420 | 1.300 | 13 | 14 | 1-103653-3 |
| 2 | 1.395 | 1.320 | 1.200 | 12 | 13 | 1-103653-2 |
| 2 | 1.295 | 1.220 | 1.100 | 11 | 12 | 1-103653-1 |
| 2 | 1.195 | 1.120 | 1.000 | 10 | 11 | 1-103653-0 |
| 2 | 1.095 | 1.020 | .900 | 9 | 10 | 103653-9 |
| 2 | .995 | .920 | .800 | 8 | 9 | 103653-8 |
| 2 | .895 | .820 | .700 | 7 | 8 | 103653-7 |
| 2 | .795 | .720 | .600 | 6 | 7 | 103653-6 |
| 1 | .695 | .620 | .500 | 5 | 6 | 103653-5 |
| 1 | .595 | .520 | .400 | 4 | 5 | 103653-4 |
| 1 | .495 | .420 | .300 | 3 | 4 | 103653-3 |
| 1 | .395 | .320 | .200 | 2 | 3 | 103653-2 |
| 1 | .295 | .220 | .100 | 1 | 2 | 103653-1 |
| MATERIAL | D | C | B | A | NO OF POSN | PART NUMBER |
| COLOR-BLACK | D | C | B | A | | |



THIS DRAWING IS A CONTROLLED DOCUMENT.

| | | |
|------------------|-----------|---------|
| DWN | R BROWN | 28JUL00 |
| CHK | K WRIGHT | 28JUL00 |
| APVD | K WRIGHT | 28JUL00 |
| PRODUCT SPEC | 108-25034 | |
| APPLICATION SPEC | 114-25026 | |
| WEIGHT | - | |
| CUSTOMER DRAWING | | |

TE Connectivity

PIN HOUSING, AMPMODU
MTE, SINGLE ROW, .100 CL
POLARIZED WITH LATCH

| | | | | | | | |
|-------|-----|-----------|--------|------------|----------|---------------|---|
| SIZE | A2 | CAGE CODE | 00779 | DRAWING NO | C=103653 | RESTRICTED TO | - |
| SCALE | 4:1 | SHEET | 1 of 1 | REV | R | | |

Mouser Electronics

Authorized Distributor

Click to View Pricing, Inventory, Delivery & Lifecycle Information:

[TE Connectivity:](#)

[103653-7](#)