

NOTES:

1. MATERIALS AND FINISHES:
 BODY, COUPLING NUT, RETAINING RING, HEXNUT, TOPHAT & WASHERS - BRASS, NICKEL PLATING
 CONTACT - BRASS, GOLD PLATING
 INSULATOR - DELRIN, NATURAL
 SPRING - BERYLLIUM COPPER, NICKEL PLATING
 GASKET - SILICONE RUBBER, RED
 GASKET - RUBBER, RED

2. ELECTRICAL:
 A. IMPEDANCE: 50 OHM
 B. FREQUENCY RANGE: DC-4 GHz
 C. DIELECTRIC WITHSTANDING VOLTAGE: 1500 VRMS, MIN.

3. MECHANICAL:
 A. DURABILITY: 500 CYCLES MIN.
 B. TEMPERATURE RANGE: -65° C TO +165° C

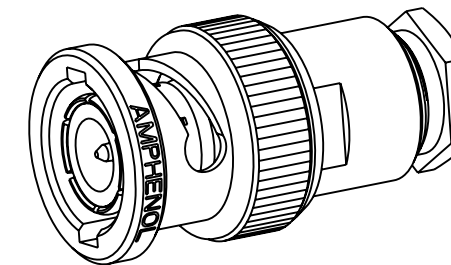
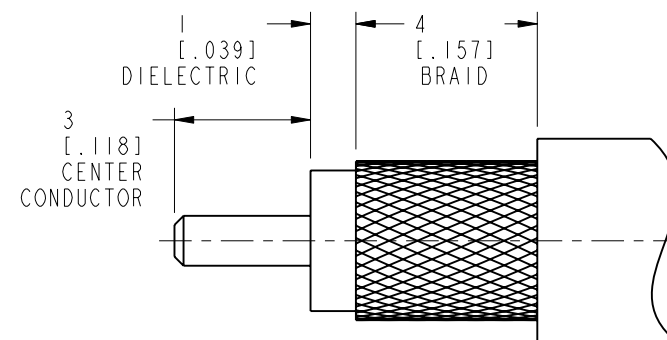
4. CABLE ASSEMBLY INSTRUCTIONS:
 A. STRIP CABLE AS SHOWN.
 B. SLIDE HEX NUT, WASHER, GASKET & TOP HAT OVER CABLE SHEATH.
 C. INSERT CABLE CONDUCTOR INTO CONTACT PIN AND SOLDER
 D. SLIDE SUB-ASSEMBLY TO THE REAR SIDE OF THE BODY AND TIGHTEN WITH PROPER SPANNER. MAKE SURE INTERFACE DIMENSIONS TO MEET

5 SHOWS CABLE ENTRY DIMENSIONS.

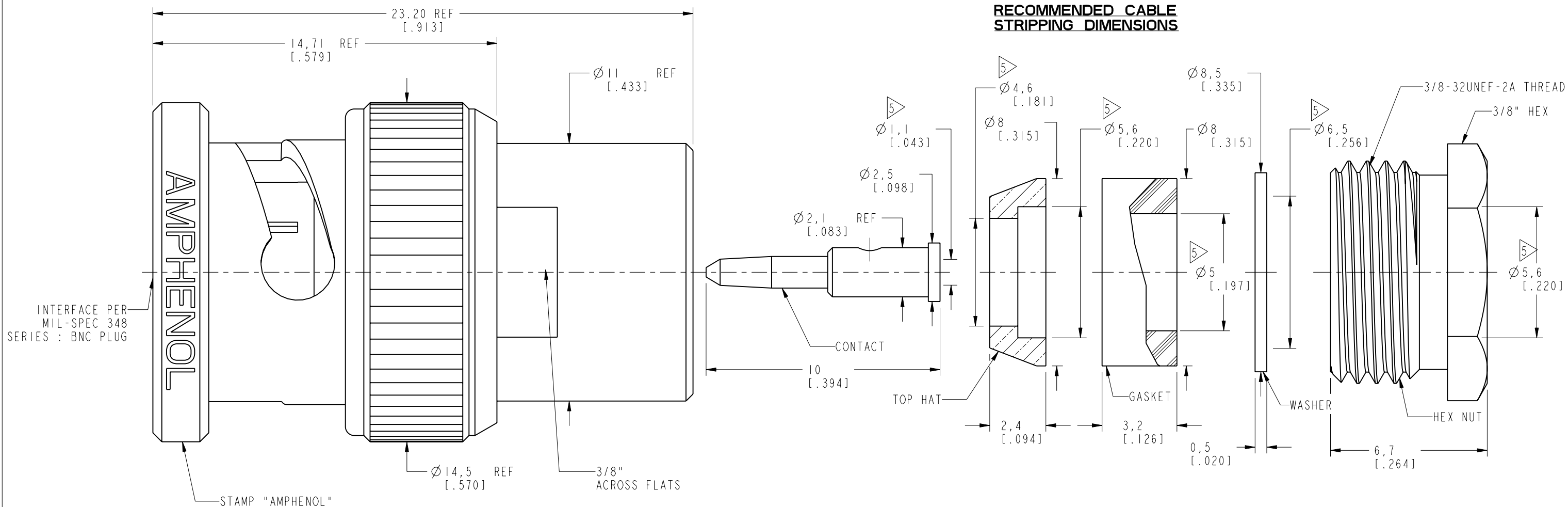
THIRD ANGLE PROJ.

REVISIONS

REV	DESCRIPTION	DATE	ECO	APPR
A	RELEASE TO MFG.	05-Feb-18		SH
B	ADD PART NO	26-Jul-19	12443	KEN



RECOMMENDED CABLE STRIPPING DIMENSIONS



CUSTOMER OUTLINE DRAWING

ALL OTHER SHEETS ARE FOR INTERNAL USE ONLY

UNLESS OTHERWISE SPECIFIED, DIMENSIONS ARE IN METRIC AND TOLERANCES ARE: <0.5mm ±0.05mm 0.5 - 6mm ±0.1mm 6 - 30mm ±0.2mm 30 - 120mm ±0.3mm ANGLES ±1°	MATERIAL	DRAWN	DATE	TITLE 50 OHM BNC STR PLUG CLAMP TYPE FOR RG-58C/U, 141, UG88 58/U, 142/U, 223/U CABLE	Amphenol RF www.amphenolrf.com
	SEE NOTES	W. ZENG	26-Jul-19		
NOTICE - These drawings, specifications, or other data (1) are, and remain the property of Amphenol corp. (2) must be returned upon request; and (3) are confidential and not to be disclosed to any person other than those to whom they are given by Amphenol Corp. the furnishing of these drawings, specifications, or other data by Amphenol Corp., or to any other person to anyone for any purpose is not to be regarded by implication or otherwise in any manner licensing, granting rights to permitting such holder or any other person to manufacture, use or sell any product, process or design, patented or otherwise, that may in any way be related to or disclosed by said drawings, specifications, or other data.	REFERENCE	ENGINEER	DATE	SCALE: 6.0:1.0	DRAWING NO. B1141C1-ND3G-58U-50SAP ITEM NO. 011141AAA58ND5A PART NO. 31-2-RFX
	EAR # 962370	S. DUAN	05-Feb-18	SHEET 2 OF 2	
CONFIGURATION LEVEL: In Work	APPROVED	DATE	DWG SIZE	REV	
FINISH	S. HSIEH	5-Aug-19	B	B	