

NUMBER C-179608

三角法 (3rd ANGLE PROJECTION)

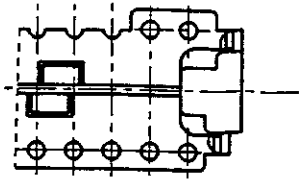
METRIC

2-179608-4 : 本 ☒

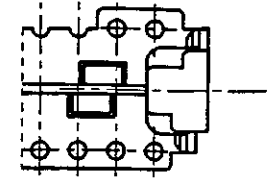
2-179608-4 : AS SHOWN

注記
1. 適用コネクタ型番 : X-173977-X (リセ)

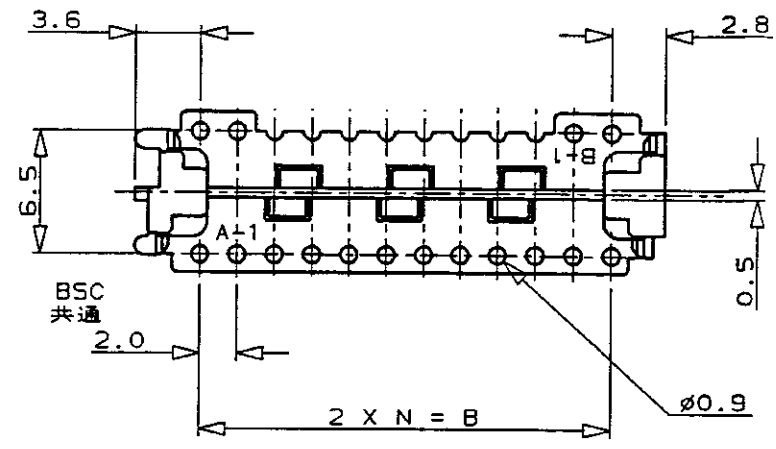
NOTE
1. CONNECTOR P/N : X-173977-X(REC)



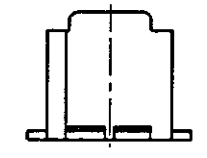
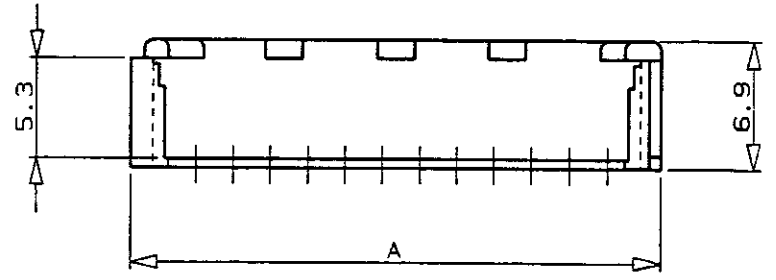
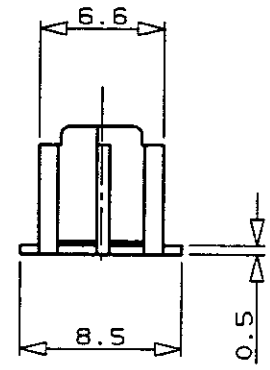
26P, 20P



28P, 22P, 16P



30P, 24P, 18P



34.3	28.0	14	30	3-179608-0
32.3	26.0	13	28	2- ↑ -8
30.3	24.0	12	26	2- -6
28.3	22.0	11	24	2- -4
26.3	20.0	10	22	2- -2
24.3	18.0	9	20	2- -0
22.3	16.0	8	18	1- -8
20.3	14.0	7	16	1-179608-6
A	B	N	POS 極数	型番 P/N

単位: 寸 寸法 DIMENSIONS IN MM. DO NOT SCALE PRINT

PRINT DIST

AMP-J REV. 10/'93

A2	ECR-16-008796	T.Q	W.H	7/19/16
AI	REVISED			
A	REVISED	FJ00-4832-94	H.S.T.F	7/25/96
O	RELEASED	FJ00-0588-94	T.F.S.K	5/18/94
LTR	変更 (REVISION RECORD)	DR	CHK	DATE

Copyright ©1990年 AMP (Japan) LTD. ALL RIGHTS RESERVED.		Copyright ©1990 AMP (Japan) LTD. ALL RIGHTS RESERVED.	
電線断面積 (WIRE RANGE)	被覆外径 (INSULATION DIA.)	名称 (NAME)	
# mm² (AWG #)	# mmφ	CT ダブルローコネクタ用ホルダー (タイプ: CT MT 用)	
材料 (MATERIAL)	色 (COLOR)	HOLDER FOR CT DOUBLE ROW CONN. (TYPE: CT MT TYPE)	
66NYLON	NATURAL	一般公差 (GENERAL TOLERANCE)	
66ナイロン樹脂	自然色	10以下: ±0.2	
OR. T. FURUYA	DE. T. FURUYA	10を超え 30以下: ±0.25	
CHK. S. KUBOUCHI	APP. S. Kubouchi 7/25/96	30を超え 100以下: ±0.3	
		角 度: ±3°	

AMP		日本エー・エム・ピー株式会社 Kasawaki, Japan	
SIZE	LOC	番号 (No.)	
B	J	C-179608	
尺度 (SCALE)	REV.	SHEET	
#	A2	1 OF 1	

(CUSTOMER DRAWING) 参考 ☒ 面

Mouser Electronics

Authorized Distributor

Click to View Pricing, Inventory, Delivery & Lifecycle Information:

[TE Connectivity:](#)

[1-179608-6](#) [1-179608-8](#) [2-179608-4](#)