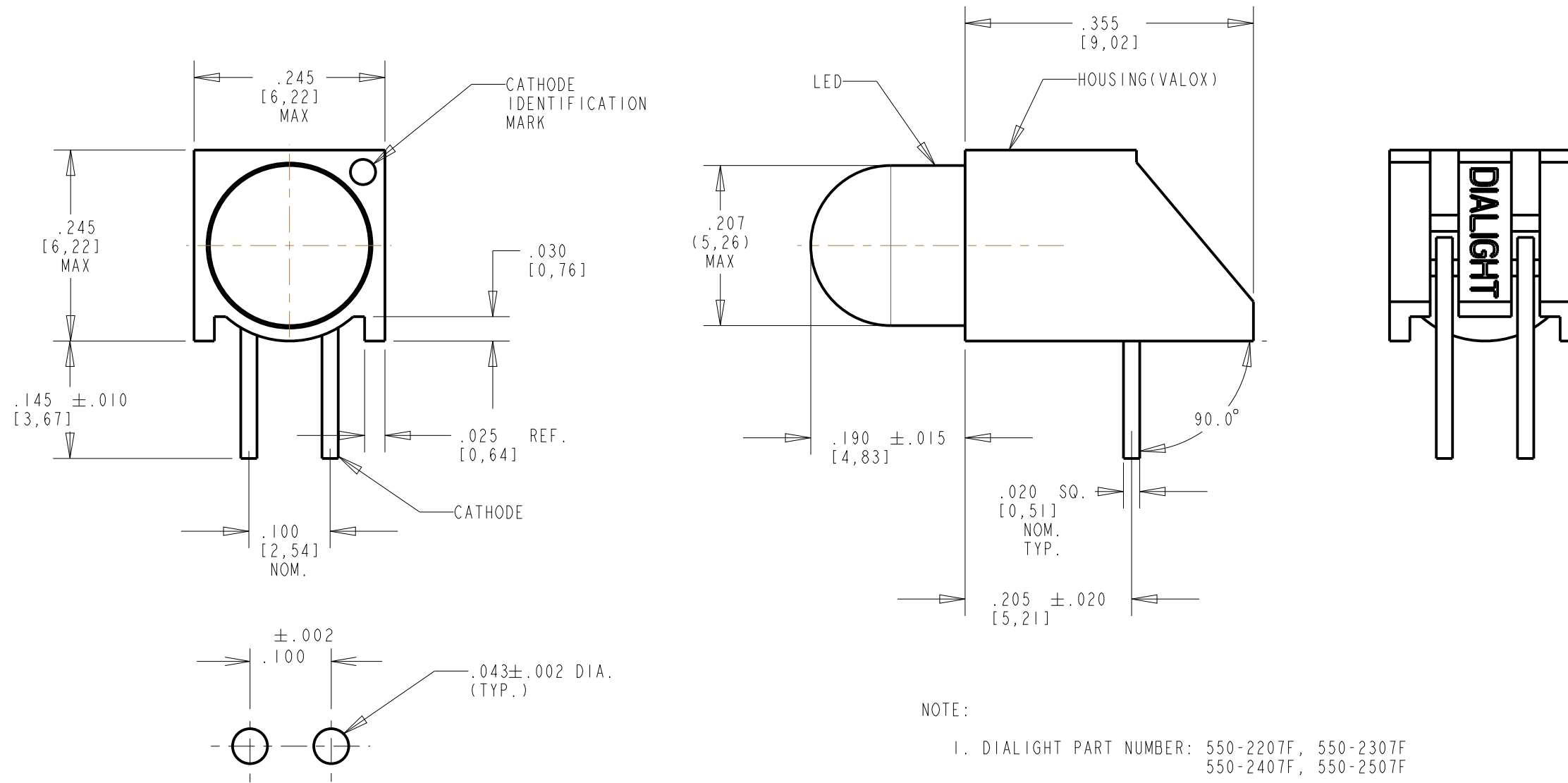


PART NUMBER	LED COLOR
550-2207F	GREEN DIFF.
550-2307F	YELLOW DIFF.
550-2407F	RED DIFF.
550-2507F	ORANGE DIFF.

LED ELECTRO-OPTICAL CHARACTERISTICS							
PARAMETER	RED	GREEN	YELLOW	ORANGE	UNITS	TEST COND.	SPECS
PEAK FORWARD CURRENT (1ms, 1/5 DUTY)	60	60	60	90	mA	N/A	ABSOLUTE MAXIMUM RATINGS AT TA = 25°C
POWER DISSIPATION	60	75	52	135	mW		
FORWARD DC CURRENT	20	25	20	30	mA		
OPERATING TEMPERATURE	-25 TO +85		-55 TO +100	-40 TO +100	°C		
STORAGE TEMPERATURE	-30 TO +100		-55 TO +100	-40 TO +100	°C		
LEAD SOLDERING TEMP. (1/16" FROM CASE)	260°C FOR 5 SECONDS				°C		
FORWARD VOLTAGE	TYP	2.2	2.1	2.1	1.9	V	OPERATING CHAR. AT TA = 25°C
	MAX	2.5	3.0	2.6	2.4		
REVERSE BREAKDOWN VOLTAGE MIN.	5				V	IF = 100 uA	
PEAK WAVELENGTH	650	563	585	600	nm	MEAS. AT PEAK	
DOMINATE WAVE LENGTH (TYP.)	—	—	590	602	nm		
LUMINOUS INTENSITY	TYP	2.2	3.6	8.7	4.0	mcd	
	MAX	6.3	10	29	7.0		
RATED CURRENT	10				mA	N/A	

REV	ECN NO	REVISIONS	DRN	CKD	APP	DATE
A	—	NEW RELEASE	TWC	-	-	11-7-05
B	—	UPDATE CHARACTERISTICS TABLE ADDED TOLERANCES TO SIDE VIEW	JTD	SM	NO	1-5-12



NOTE:
1. DIALIGHT PART NUMBER: 550-2207F, 550-2307F
550-2407F, 550-2507F

THIS DRAWING AND THE CONTENTS HEREIN ARE CONFIDENTIAL AND THE SOLE PROPERTY OF DIALIGHT. REPRODUCTION OF THIS DRAWING OR CONSTRUCTION OF ANY PARTS WITHIN THIS DRAWING ARE FORBIDDEN WITHOUT THE WRITTEN CONSENT OF DIALIGHT.		
SCALE: 6.000 ALL DIM'S IN: INCHES (MM)	DRAWING NUMBER C-17303	REV B
TOLERANCES: UNLESS OTHERWISE SPECIFIED FRACTIONS: ±1/64 DECIMALS (.XX): ±.01 DECIMALS (.XXX): ±.005 DECIMALS (.XXXX): ±.0005 ANGLES: ±1°	TITLE HIGH EFFICIENCY CBI WITH STANDOFF, RoHS COMPLIANT	
FINISH:	MATERIAL	
FSCM 83330	Dialight 1501 ROUTE 34 SOUTH FARMINGDALE, NJ 07727	
SHEET 1 OF 1 FAMILY TABLE:		

P.C.B. HOLE PATTERN