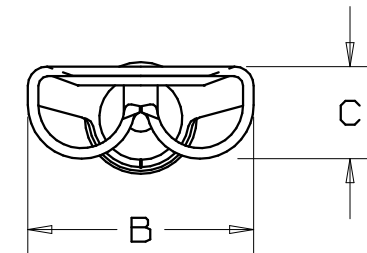


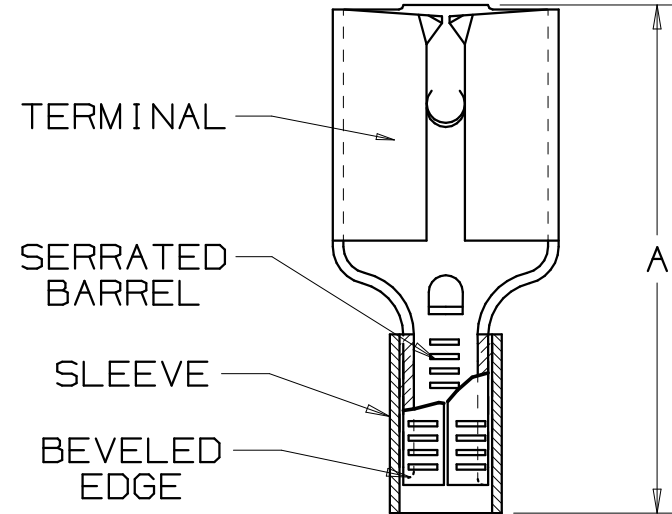
THIS COPY IS PROVIDED ON A RESTRICTED BASIS AND IS NOT TO BE USED IN ANY WAY DETRIMENTAL TO THE INTERESTS OF PANDUIT CORP.

| PART NUMBER | | TAB SIZE | WIRE RANGE AWG (mm ²) | DIMENSIONS in | | |
|-------------|----------|----------------------------|-----------------------------------------|------------------------|------------------------|------------------------|
| PREFIX | PKG | | | A ± 0.015 (0.4) | B ± 0.010 (0.3) | C ± 0.010 (0.3) |
| D18-188 | -C -M | .187 x .020 (4.8 x 0.5) | 22-18 (.5-1.0) | .58 (14.7) | .23 (5.8) | .10 (2.5) |
| * D14-188 | -C -M | .187 x .020 (4.8 x 0.5) | 16-14 (1.5-2.5) | .58 (14.7) | .23 (5.8) | .10 (2.5) |
| D18-187 | -C -M | .187 x .032 (4.8 x 0.8) | 22-18 (.5-1.0) | .58 (14.7) | .23 (5.8) | .10 (2.5) |
| * D14-187 | -C -M | .187 x .032 (4.8 x 0.8) | 16-14 (1.5-2.5) | .58 (14.7) | .23 (5.8) | .10 (2.5) |



NOTES:

- UL LISTED, UL RECOGNIZED (D14-187 & D14-188 ONLY) AND CSA CERTIFIED FOR:
A. STRANDED COPPER WIRE ONLY
B. 302° F (150° C) MAX TEMP RATING
- PACKAGE QTY:
A. STD: -C=100
B. BULK: -M=1000
- MATERIAL:
A. STAMPING: .016 (0.41) THK BRASS, TIN PLATED
B. SLEEVE: BRASS, TIN PLATED
- WIRE STRIP LENGTH $9/32^{+1/32}$ (7.1 $^{+0.8}$), $^{-0}$
- FIRST INSERTION FORCE: 12 LB (53N) MAX
FIRST WITHDRAWAL FORCE: 12 LB (53N) MAX
6 LB (27N) MIN
- INSTALLATION TOOLS:
A. UL LISTED AND CSA CERTIFIED: CT-100, CT-200, CT-570, CT-1570, CT-2457CH
B. UL RECOGNIZED: CT-100, CT-200, CT-570, CT-1570, CT-2457CH
C. PANDUIT APPROVED: CT-160, CT-260
- DIMENSIONS IN BRACKETS ARE IN MILLIMETERS OR mm²



LISTED
20H3
E78522



CERTIFIED
LR31212



RECOGNIZED
E78522

A41305_08

PANDUIT

CORP.

TINLEY PARK, ILLINOIS

NON-INSULATED FEMALE DISCONNECT,
SLEEVED BARREL (.188 SERIES)

| REV | DATE | BY | CHK | DESCRIPTION | ECN # | QA | CUST | PM | APP |
|-----|-------|------|-----|--------------------------------------------------------|---------|----|------|-----|-----|
| 08 | 6/06 | DAW | DAW | REMOVED MAX. AMPERAGE RATING | TRO0134 | | | | |
| 07 | 7/03 | KLFU | SKB | ADDED INTERNAL SERRATIONS WIRE RANGE 1,0 WAS 1,5 | 012453 | | SKB | TRO | |
| 06 | 1/01 | RM | SKB | FILESPEC WAS N41305AA_PCD_05 | 08933 | | JAC | CCH | |
| 05 | 10/96 | TM | | ADD 187'S, UPDATED NOTES, FILESPEC WAS NPC_41305_04 | 05164 | | | | |
| 04 | 3/95 | MS | RS | UPDATED NOTES AND DIMENSIONS | 03051 | | LA | KS | |

DRAWN BY

DAW

CHK'D

SCALE

NONE

DRAWING NO.

A41305