



VANSON ELECTRONICS LTD.

TEL: (852) 24271 741

19, FL., KINGSWAY INDUSTRIAL BLDG.,
FLAT "H", 173-175 WO YI HOP RD.,
KWAI CHUNG, N.T., KOWLOON,
HONG KONG

Email: sales@vanson.ws
Fax: (852) 2480 5640

Your Ref.

Our Ref.

Hong Kong, Dec 07, 2016

Page: 1 of 4

PRODUCT SPECIFICATIONS

Description: Auto DC Power Regulated Adaptor

Model No.: SDR-150W

Detachable plugs: Include 9 detachable plugs
(A, B, C, D, E, F, G, H, K; Part No.# CDWP-9D)

DC Plug (Input): 30cm of UL1185 cord with cigarette lighter input plug

DC Plug (Output): 5.5ft. of cable with DC socket

Dimensions: 112mm(L) x 60mm(W) x 38.5mm(H) (not include cord)

Weight: 406 grams (not include plugs)

TECHNICAL SPECIFICATIONS:

Primary Voltage and Frequency: 12V DC 14.5A max.

Secondary voltage: 15 / 16V DC $\pm 6\%$ 8.5A;
18 V DC $\pm 6\%$ 8A;
19V DC $\pm 5\%$ 8A;
20V DC $\pm 5\%$ 7.5A;
22V DC $\pm 5\%$ 6.5A
24V DC $\pm 5\%$ 6A, 150W max.

Features:

- Short circuit & overload protection (*Replaceable fuse: 15AMP)
- High efficiency & low energy consumption
- Stabilized output, low ripple
- Green LED indicator

Temperature

Storage temperature: -10°C to 55°C
Working temperature: 0°C to 35°C



VANSON ELECTRONICS LTD.

TEL: (852) 24271 741

19, FL., KINGSWAY INDUSTRIAL BLDG.,
FLAT "H", 173-175 WO YI HOP RD.,
KWAI CHUNG, N.T., KOWLOON,
HONG KONG

Email: sales@vanson.ws
Fax: (852) 2480 5640

Your Ref.

Our Ref.

Hong Kong, Dec 07, 2016

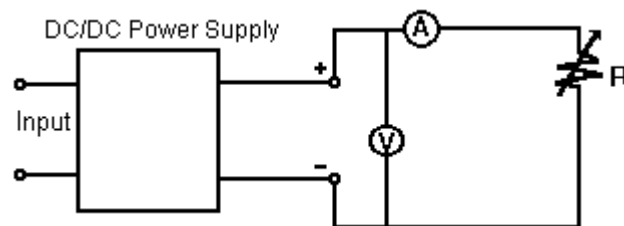
Page: 2 of 4

TESTING:

Item	Condition	Requirement
Drop Test	1meter height, each face is dropped one time, concrete floor	--- Function Test Pass --- Mechanical Pass
High Temperature and Humidity Test	46 degC 95% R.H. 96 hours	--- Function Test Pass --- Appearance Pass (e.g. No deform in enclosure; No corrosion on metal part)
Temperature Cycling Test	(a) -20 degC ; 12 hours (b) 65 degC ; 12 hours One cycle is completed (a) and (b) Total 4 cycles (96 hours)	--- Function Test Pass --- Appearance Pass (e.g. No deform in enclosure)

TESTING CIRCUIT ON OUTPUT:

A = Amperemeter
V = Voltmeter
R = Variable resistor



Electrical Specification

Input: 12V DC

Output:	15V	16V	18V	19V	20V	22V	24V
Test Item:							
Output Voltage (Full load)	15V \pm 6%	16V \pm 6%	18V \pm 6%	19V \pm 5%	20V \pm 5%	22V \pm 5%	24V \pm 5%
Output Current (A)	8.5	8.5	8	8	7.5	6.5	6
Ripple / Noise (Full load)	300mV	300mV	300mV	300mV	300mV	300mV	300mV
Max output power	152W						
Efficiency	88%						



VANSON ELECTRONICS LTD.

TEL: (852) 24271 741

19, FL., KINGSWAY INDUSTRIAL BLDG.,
FLAT "H", 173-175 WO YI HOP RD.,
KWAI CHUNG, N.T., KOWLOON,
HONG KONG

Email: sales@vanson.ws
Fax: (852) 2480 5640

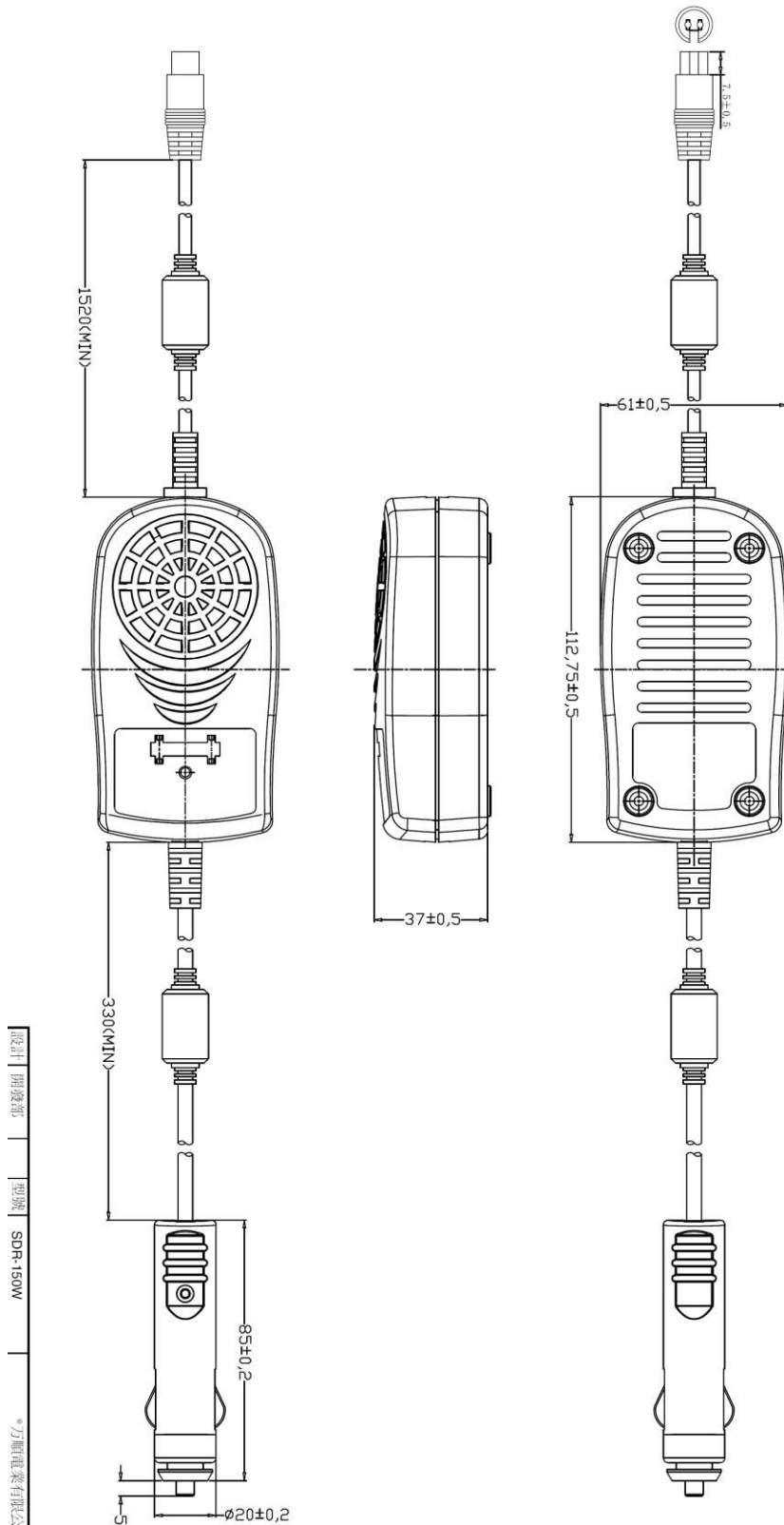
Your Ref.

Our Ref.

Hong Kong, Dec 07, 2016

Page: 3 of 4

PRODUCT DRAWING:





VANSON ELECTRONICS LTD.

TEL: (852) 24271 741

19, FL., KINGSWAY INDUSTRIAL BLDG.,
FLAT "H", 173-175 WO YI HOP RD.,
KWAI CHUNG, N.T., KOWLOON,
HONG KONG

Email: sales@vanson.ws
Fax: (852) 2480 5640


Your Ref.

Our Ref.

Hong Kong, Dec 07, 2016

Page: 4 of 4

PLUGS DRAWING: (#CDWP-9D)



1. DELL PLUG, BLACK COLOR.
Dell plug, inner model used PE,
outer model used 20P black color PVC.

2. DETACHABLE PLUG, BLACK PLASTIC RING HARDWARE.
Dell plug, 07.40x12.5±0.5
Used 20P black color pvc.

3. DETACHABLE PLUG, BLACK PLASTIC RING HARDWARE.
01.90x5.50x12.5±0.5mm "I" type,
used 20P black color PVC.

4. DETACHABLE PLUG, YELLOW PLASTIC RING HARDWARE.
01.00 (pin)x5.00x11.5±0.5mm "I" type,
used 20P black color PVC.

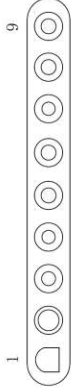
5. DETACHABLE PLUG, BLACK PLASTIC RING HARDWARE.
01.40 (pin)x6.50x14±0.5mm "I" type,
used 20P black color PVC.

6. DETACHABLE PLUG, BLACK PLASTIC RING HARDWARE.
03.00x6.30x14±0.5mm "I" type,
used 20P black color PVC.

7. DETACHABLE PLUG, YELLOW PLASTIC RING HARDWARE.
01.70x4.75x9.5±0.5mm "I" type,
used 20P black color PVC.

8. DETACHABLE PLUG, RED PLASTIC RING HARDWARE.
02.50x5.50x12±0.5mm "L" type,
used 20P black color PVC.

9. DETACHABLE PLUG, ORANGE PLASTIC RING HARDWARE.
02.10x5.50x12±0.5mm "L" type,
used 20P black color PVC.




FUNCTION TEST: No open, no reversed polarity, no short-circuit, no INT.
FINISHED PRODUCT ASSEMBLY SHALL BE IN COMPLIANCE WITH ROHS REQUIREMENT.

TOLERANCE	DESIGN/DATE	李军06/10/2004	END-03356
X= ±0.5mm	DRAWING/DATE	李军06/10/2004	DESIGN STGN
.X= ±0.3mm	ASSESSOR		REV SEC
.XX= ±0.05mm	DATE		RO
	RATIFIER		
	DATE		
			VANSON ELECTRONICS LIMITED

MODEL: VAS-2798-A0

DC CABLE

CDWP-9D



MM