



PRODUCTS DATASHEET

FRB系列 DC500V

直流快速熔断器

FRB Series DC 500V

DC Fast Fuse for

产品规格书

Product Specification

1.规格型号 Specification

1.1 额定电压 Rated Voltage: DC500V

1.2 额定电流 Rated Current: 50A~600A

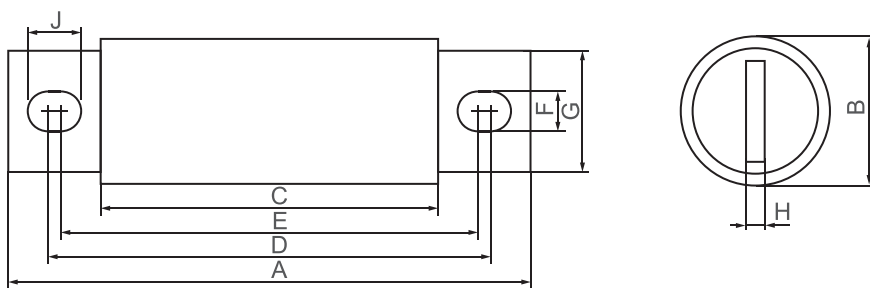
1.3 功能等级 Function Class: aR

1.4 分断能力 Breaking Capacity: DC=50kA

2.符合标准及规范 Standard: IEC60269-4 GBT31465.6-2017 ISO8820-8

3.产品外形尺寸 Product Dimension

型号 Model	尺码 Size	安装方式 Installation	额定电压(V) Rated voltage(V)	额定电流(A) Rated current(A)	尺寸Dimension(mm)								
					A	B	C	D	E	F	G	H	J
FRB	21	MB61	500V	50~150	81	21	40	66	57	8.5	16	4	13
	25	MB72		100~250	92	25	44	72	67	8.5	18	4	11
	31	MB72		200~400	92	31	47	73	66	8.5	24	5	12
	38	MB80		350~600	110	38	53	88	73	10.5	25	6	16

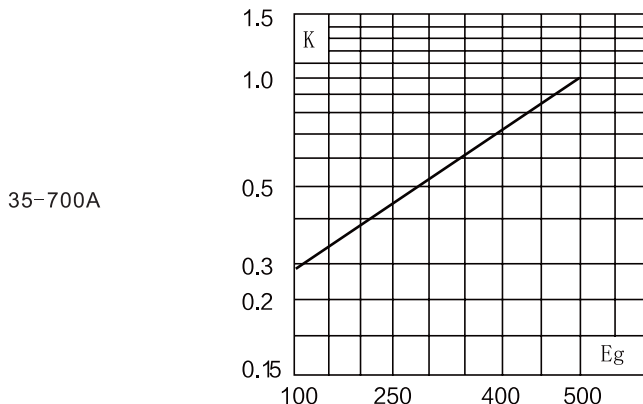


4. 产品技术参数 Technical parameters

4.1 弧前Pre-acting(I²t), 熔断Clearing(I²t), 额定功率Watts Loss

型号 Model	尺寸 Size	安装方式 Installation	额定电压(V) Rated voltage	电流(A) Current	弧前I ² t(kA ² S) Pre-Acting	熔断I ² t(kA ² S) Clearing	0.5In功率(W) Watts Loss	曲线图 Curve
FRB	21	MB61	500V	50	0.37	0.7	1.2	图Figure 1 图Figure 2
				60	0.61	1.1	1.5	
				70	0.72	1.5	1.7	
				80	0.9	2.2	2	
				100	1.3	3	2.4	
				125	1.4	4	3.2	
	25	MB72		150	2	6	3.8	
				100	1.1	2.4	3	
				125	1.6	3.6	3.8	
				150	1.7	6	4.5	
				175	2.2	7.5	5	
				200	3.5	10.5	6	
	31	Mb72		225	4	13	7	
				250	5	16	8	
				200	3	9	6.8	
				225	4	11	7.8	
				250	5	13.6	8.5	
				300	7.2	20	10	
	38	MB80		350	10	28	12	
				400	12.9	35.2	13.5	
				350	11	39	14	
				400	14	53	15	
				450	22	73	16	
				500	28	88	17	
			550	40	138	17		
			600	50	170	18		

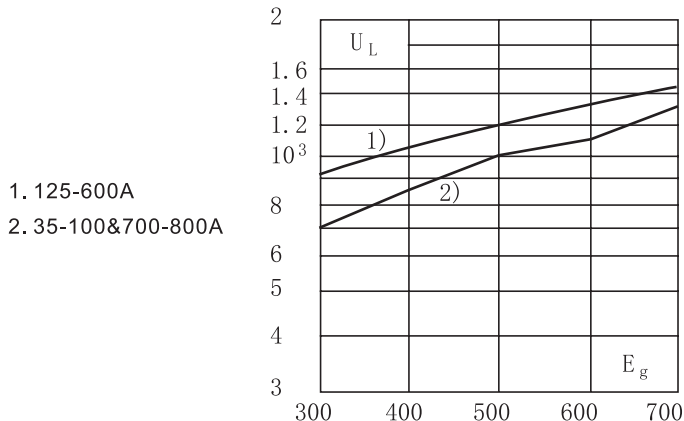
4.2 熔断 I²t 修正系数K Melting I²t Correction Factor K



计算方法: $I^2t(\text{修正}) = I^2t(\text{额定}) \times K$
 Calculation Method:
 $I^2t(\text{correction}) = I^2t(\text{rated}) \times K$

注: Eg为工作电压
 Note: Eg is the working voltage

4.3 电弧电压峰值 Peak Value of Arc Voltage



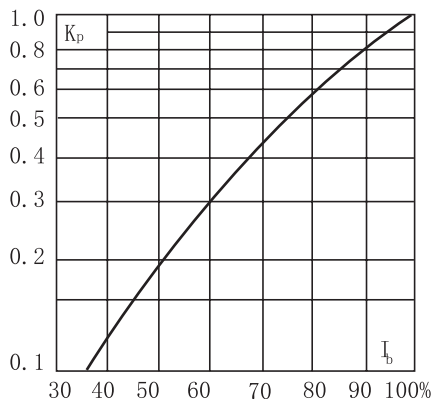
注: UL为电弧电压峰值; Eg为工作电压; 此图为功率因数为15%的情况。

Note: UL is the peak value of arc voltage; Eg is the working voltage; This figure shows the case when the power factor is 15%.

4.4 功耗修正系数 Power consumption correction factor Kp

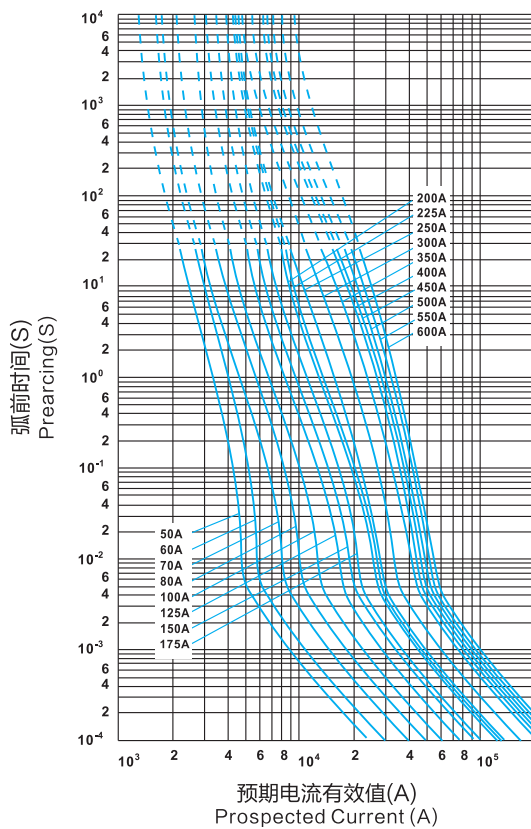
额定功耗已在4.1给出, 低于额定电流的功耗可按下图计算。

The rated power consumption is given in 4.1, and the power consumption below the rated current can be calculated as shown below.



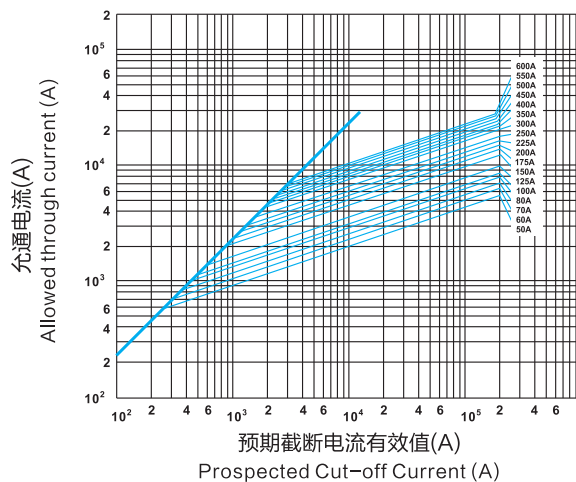
计算方法: $W(\text{修正}) = W(\text{额定}) \times Kp$
 Calculation Method:
 $W(\text{correction}) = W(\text{rated}) \times Kp$

4.5 时间-电流曲线 Time-current characteristics curves



图Figure 1

4.6 截断电流特性 Cut-off current characteristics



图Figure 2

样本所述的产品资料以实物为准，若有变更本公司恕不另行通知，欢迎致电咨询。

The product information described in the data sheet is subject to the actual product.
If there is any change, the company will not notify you separately. Please call for consultation.

FRZ[®] 弗而兹电气

地址：浙江省乐清市北白象镇东大街512号
Address: 512 Dong Dajie, Beibaixiang Town, Yueqing
City, Zhejiang Province

电话(Tel): 0577-6198 6868 传真(Fax): 0577-6198 6869 网站(Web): <http://www.frsidq.com>

