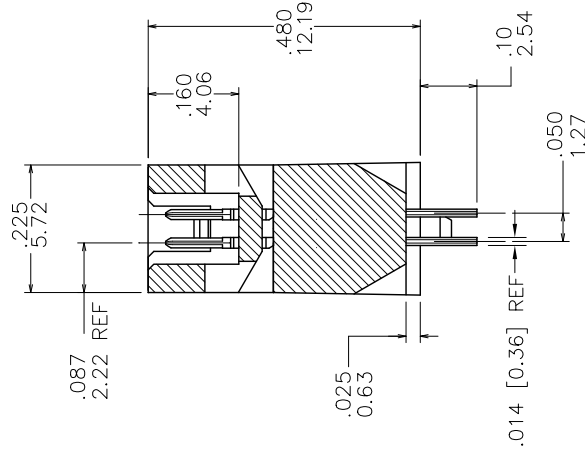
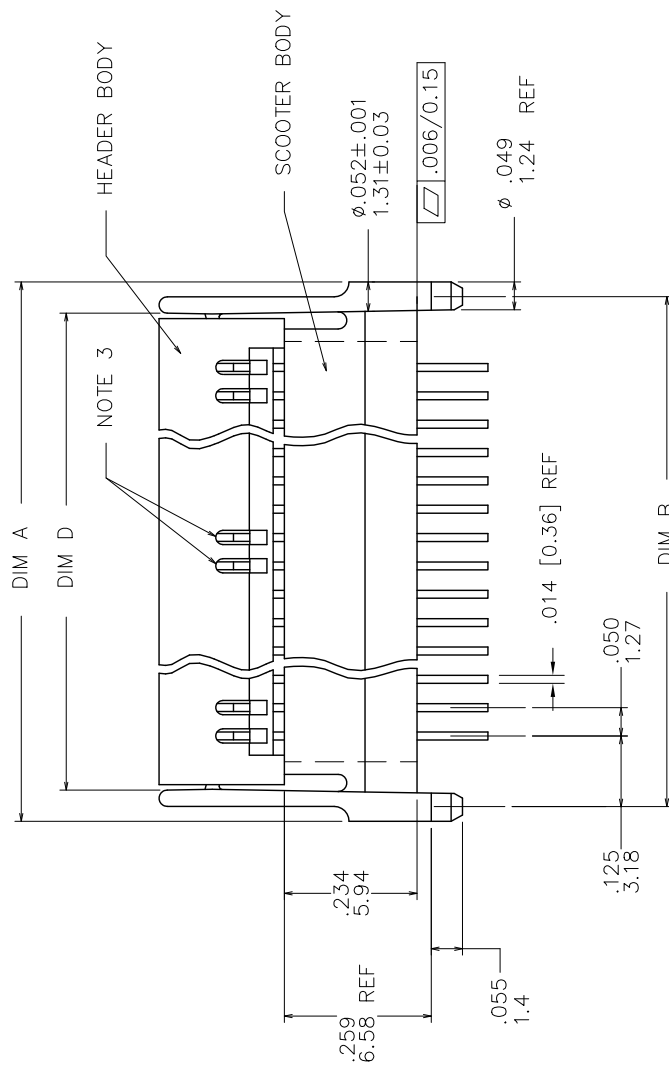
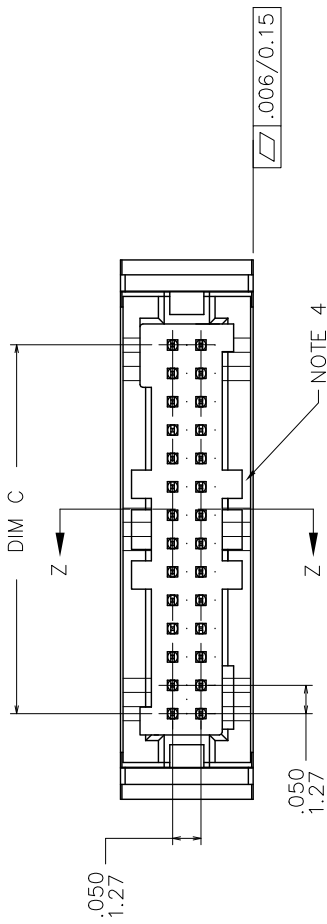


PRODUCT NUMBER
SEE TABLE

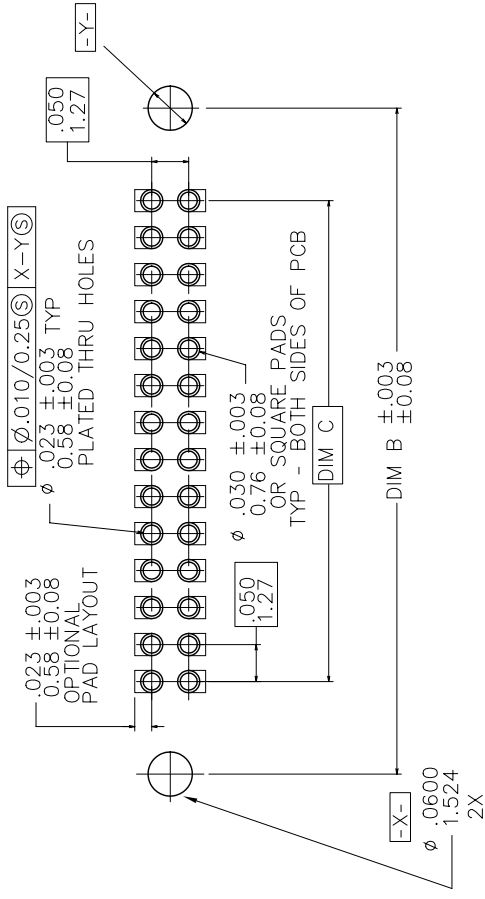


mat'l. code		surface		tolerance		projection		product family	
-		ISO 1302		ISO 406		FIRST ANGLE		RIBCAGE	
itr		ecn no		date		tolerances unless otherwise specified		title	
K V61605		DLW		12/14/00		.xxx±.01/0.3		SCOOTER 1	
L V02780		DLW		3/9/01		linear		ASSEMBLY	
M IM05-0123		ERE		06/07/05		.xxx±.0020/0.05		scale 3:1	
N IM06-0225		ERE		06/12/06		dr		J. SHREINER 12/14/90	
P IM06-0370		MHT		9/26/06		engr		C. TREXLER 12/14/90	
R M09-0058		CMR		4/06/09		chr		C. TREXLER 12/14/90	
S IEX-N-00984		YO		1/30/12		appd		C. TREXLER 12/14/90	
sheet		revision		S		S		dwg no	
index		sheet		1		2		87434	
								sheet 1 of 2	
								size	
								A3	
								type	
								Product Customer Drawing	

PRODUCT NUMBER	NO OF POS	DIM A	DIM B	DIM C	DIM D
NOTE 5					
87434-115	30	1.000/25.40	.950/24.13	.700/17.78	.890/22.61
-120	40	1.250/31.75	1.200/30.48	.950/24.13	1.140/28.96
-125	50	1.500/38.10	1.450/36.83	1.200/30.48	1.390/35.31
-130	60	1.750/44.45	1.700/43.18	1.450/36.83	1.640/41.66
-135	70	2.000/50.80	1.950/49.53	1.700/43.18	1.890/48.01
-140	80	2.250/57.15	2.200/55.88	1.950/49.53	2.140/54.36
-145	90	2.500/63.50	2.450/62.23	2.200/55.88	2.390/60.71
87434-150	100	2.750/69.85	2.700/68.58	2.450/62.23	2.640/67.06

NOTES:

1. TERMINAL PLATING:
CONTACT ZONES:
30u"/.76u MIN HARD GOLD OR GXT OVER 50u"/1.27u Ni ON CONTACT ZONES.
100u"/2.54u MIN Sn OVER 50u"/1.27u Ni IN SOLDERING ZONES.
2. HEADER BODY: GLASS FILLED THERMOPLASTIC FLAME
RETARDANT PER UL 94 V-0.
COLOR: NATURAL
HEAT DEFLECTION TEMP - 500°F
SCOOTER BODY: GLASS FILLED THERMOPLASTIC FLAME
RETARDANT PER UL 94V-0.
COLOR: NATURAL
HEAT DEFLECTION TEMP @ 264 PSI - 466°F(241°C)
PER ASTM TEST NO D64B.
3. ADDITIONAL CORING IN CENTER MANUFACTURING OPTION.
4. MOLDING FLOW RESTRICTERS QUANTITY AND LOCATION IS MANUFACTURING OPTION.
5. ADD "LF" SUFFIX AT THE END OF PART NUMBER FOR LEAD FREE OPTION.
6. THIS PRODUCT MEETS EUROPEAN UNION DIRECTIVES AND OTHER COUNTRY REGULATION AS DESCRIBED IN GS-22-008.
7. THE HOUSING WILL WITHSTAND EXPOSURE TO 260° PEAK TEMPERATURE FOR 15 SECONDS IN A WAVE SOLDER APPLICATION WITH A 1.5mm MINIMUM THICK CIRCUIT BOARD. SEE APPLICATION NOTES/PROCEDURES IF THEY ARE AVAILABLE.
8. PRODUCT SPEC PER BUS-12-087.



RECOMMENDED P.C.B. LAYOUT
SCALE 4/1

mat'l. code		surface		tolerance		projection		product family	
ISO 1302		ISO 406		ISO 1101		RIBCAGE		title	
tr		ecn no		date		angles		dr	
S						.xxx?05/0.13		SCOOTER 1	
						linear		ASSEMBLY	
						0deg?2		dwg no	
						.xxx?0020/0.051		87434	
						scale 3:1		sheet 2 of 2 size	
						J. SHREINER 12/14/90		A3	
						C. TREXLER 12/14/90		Product Customer Drawing	
						C. TREXLER 12/14/90			
sheet		revision							
index		sheet							