



8700 Series Overtravel Pushbutton Switches

A
Pushbutton



Features/Benefits

- Extended pre-travel or over-travel
- Heavy-duty brass plunger
- Long electrical life – 100K cycles
- RoHS compliant

Typical Applications

- Telecommunications
- High end Instrumentation
- Medical & test equipment
- Detection

Specifications

CONTACT RATING: Q contact material: 1 AMP @ 120 V AC or 28 V DC. See page A-76 for additional ratings.
 ELECTRICAL LIFE: 100,000 actuations at full load.
 CONTACT RESISTANCE: Below 30 mΩ typ. Initial @ 2-4 V DC, 100 mA.
 INSULATION RESISTANCE: 10³Ω min.
 DIELECTRIC STRENGTH: 1,000 Vrms min. @ sea level.
 OPERATING TEMPERATURE: -30°C to 65°C.

NOTE: Any models supplied with Q, or B contact material are RoHS compliant.

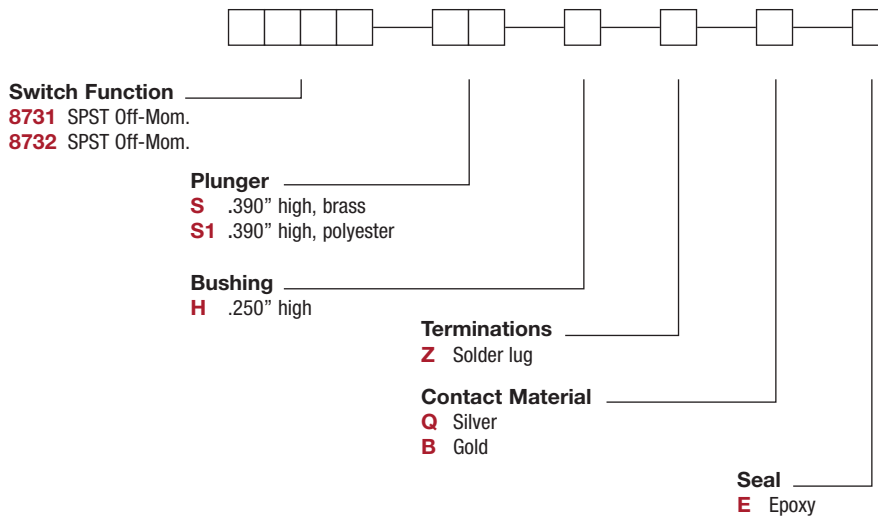
NOTE: Specifications and materials listed above are for switches with standard options. For information on specific and custom switches, consult Customer Service Center.

Materials

CASE: Diallyl phthalate (DAP) (UL 94V-0).
 PLUNGER:
 8731 – .39074" brass, nickel plated.
 8732 – .390"74 PBT polyester, black.
 BUSHING: brass, nickel plated.
 CONTACTS: Q contact material: Coin silver, silver plated. See page A-76 for additional contact materials.
 TERMINALS: Q contact material: Copper alloy, silver plated. See page A-76 for additional contact materials.
 TERMINAL SEAL: Epoxy.
 HARDWARE: Nut: Brass, nickel plated; lockwasher: Steel, bright nickel plate. One mounting nut & lockwasher supplied with all switches.

Build-A-Switch

To order, simply select desired option from each category and place in the appropriate box. Available options are shown and described on pages A-75 and A-76. For additional options not shown in catalog, consult Customer Service Center. All models have epoxy terminal seal and are compatible with all "bottom-wash" PCB cleaning methods.



8700 Series Overtravel Pushbutton Switches



A
Pushbutton

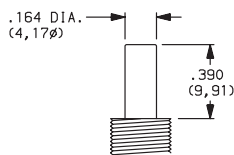
SWITCH FUNCTION

NO. POLES	MODEL NO.	SWITCH FUNCTION		TOTAL TRAVEL	ACTUATION FORCE	SCHEMATIC
		POS. 1	POS. 2			
SP	8731	OFF	MOM.	.390 (9,91) TYP. with overtravel .311 TYP.	4.7 oz TYP.	N.O. with overtravel SPST
SPST <p>Part number shown: 8731SHZQE</p>						
SP	8732	OFF	MOM.	.390 (9,91) TYP. with overtravel .350 TYP.	2.2 oz TYP.	N.O. with overtravel SPST
SPST <p>Part number shown: 8732S1HZQE</p>						

MOM. = Momentary

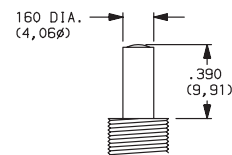
PLUNGER

S .390" HIGH, BRASS



Available with 8731 model only.

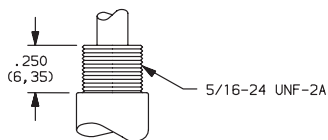
S1 .390" HIGH, PBT POLYESTER



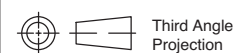
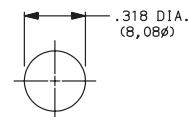
Available with 8732 model only.

BUSHING

H .250" HIGH



PANEL MOUNTING



Dimensions are shown: Inches (mm)
Specifications and dimensions subject to change

C&K

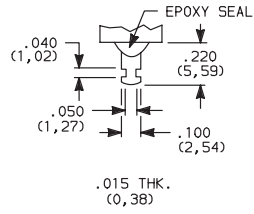


8700 Series Overtravel Pushbutton Switches

Pushbutton
A

TERMINATIONS

Z SOLDER LUG



CONTACT MATERIAL

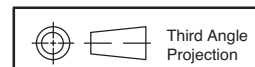
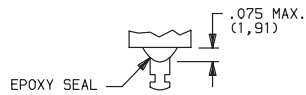
OPTION CODE	RoHS COMPLIANT *	RoHS COMPATIBLE *	CONTACT MATERIAL	TERMINAL PLATING	RATINGS	
Q	YES	YES	SILVER	SILVER	POWER	1 AMP @ 125 V AC OR 28 V DC.
B	YES	YES	GOLD	GOLD	LOW LEVEL/DRY CIRCUIT	0.4 VA MAX. @ 20 V AC OR DC MAX.

* Note: See Technical Data section of this catalog for RoHS compliant and compatible definition and specifications.

NOTE: Any models supplied with Q, or B contact material are RoHS compliant.

SEAL

E EPOXY SEAL



Dimensions are shown: Inches (mm)
Specifications and dimensions subject to change