

LTM4616

Dual 2.7V_{IN(MIN)}, 8A Step-Down μModule Regulator

DESCRIPTION

Demonstration circuit 1245A features the LTM[®]4616, the high efficiency, high density, dual output switch mode power module. The rated load current is 8A for each channel, while derating is necessary for certain V_{IN} , V_{OUT} , and thermal conditions. By applying a clock signal to the CLKIN pin, the module's switching frequency may be synchronized from 0.75MHz to 2.25MHz. The same clock frequency is available at the CLKOUT pin with the phase relationship between CLKIN and CLKOUT determined by the PHMODE pin. This feature can be used not only to reduce undesirable

frequency harmonics but also to parallel the two channels of LTM4616 or even multiple LTM4616s and LTM4608s to provide higher output currents. The LTM4616 data sheet must be read in conjunction with this demo manual prior to working on or modifying demo circuit DC1245A.

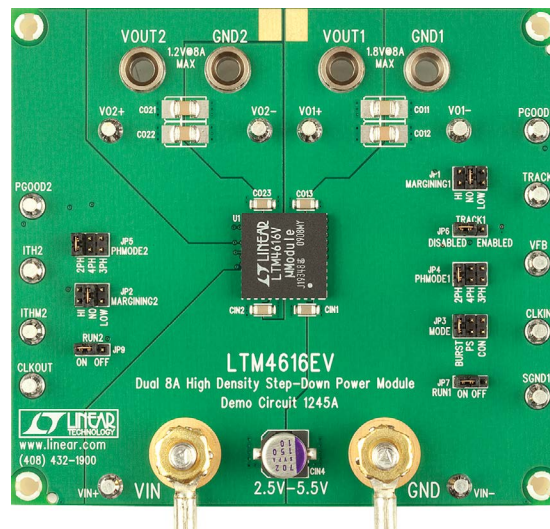
Design files for this circuit board are available at <http://www.linear.com/demo/DC1245A>

LT, LT, LTC, LTM, μModule, Linear Technology and the Linear logo are registered trademarks of Linear Technology Corporation. All other trademarks are the property of their respective owners.

PERFORMANCE SUMMARY (T_A = 25°C)

PARAMETER	CONDITIONS	VALUE
Input Voltage Range		2.7V to 5.5V
Output Voltage V_{OUT1} V_{OUT2}	$V_{IN} = 3.3V$, $I_{OUT1} = 8A$ $I_{OUT2} = 8A$	1.8 ±2% 1.2 ±2%
Maximum Continuous Output Current	Derating Is Necessary for Certain V_{IN} , V_{OUT} , and Thermal Conditions, See Data Sheet for Details	8A _{DC} Each Channel
Default Operating Frequency		1.5MHz
Efficiency	$V_{IN} = 5V$, $V_{OUT1} = 1.8V$, $V_{OUT2} = 1.2V$, 8A Per Channel	77.5%, See Figure 3 for More Information
Load Transient	$V_{IN} = 3.3V$, $V_{OUT1} = 1.8V$; $V_{OUT2} = 1.2V$	See Figures 4 and 5 for Details

BOARD PHOTO



dc1245afa

DEMO MANUAL DC1245A

QUICK START PROCEDURE

Demonstration circuit 1245A is an easy way to evaluate the performance of the LTM4616. Please refer to Figure 1 for proper measurement equipment setup and follow the procedure below:

1. Place jumpers in the following positions for a typical 1.8V_{OUT} and 1.2V_{OUT} application:

PHMODE2	MARGINING2	RUN2	MARGINING1
2PH	NO	ON	NO

TRACK1	PHMODE1	MODE	RUN1
DISABLED	2PH	BURST	ON

2. With power off, connect the input power supply, load and meters as shown in Figure 1. Preset the load to 0A and V_{IN} supply within the 2.7V to 5.5V operating range.
3. Turn on the power at the input. The output voltage at VO1⁺ and VO1⁻ should be 1.8V ±2% and the voltage at VO2⁺ and VO2⁻ should be 1.2V ±2%.

4. Once the proper output voltage is established, adjust the load within the operating range and observe the output voltage regulation, ripple voltage, efficiency and other parameters. To measure input and output ripple, please refer to Figure 2 for proper setup.
5. To synchronize channel 1 to an external clock, please apply the desired clock signal to CLKIN and SGND1. The external clock signal should have amplitude of at least 2V but less than V_{IN}.
6. V_{OUT1} can track another supply connected at TP20 as determined by resistors R6 and R17. V_{OUT2} is set up to track V_{OUT1} in a manner determined by resistors R15 and R16. By default both resistor pairs have been selected to support coincident tracking. Please refer to Figure 6 for reference.

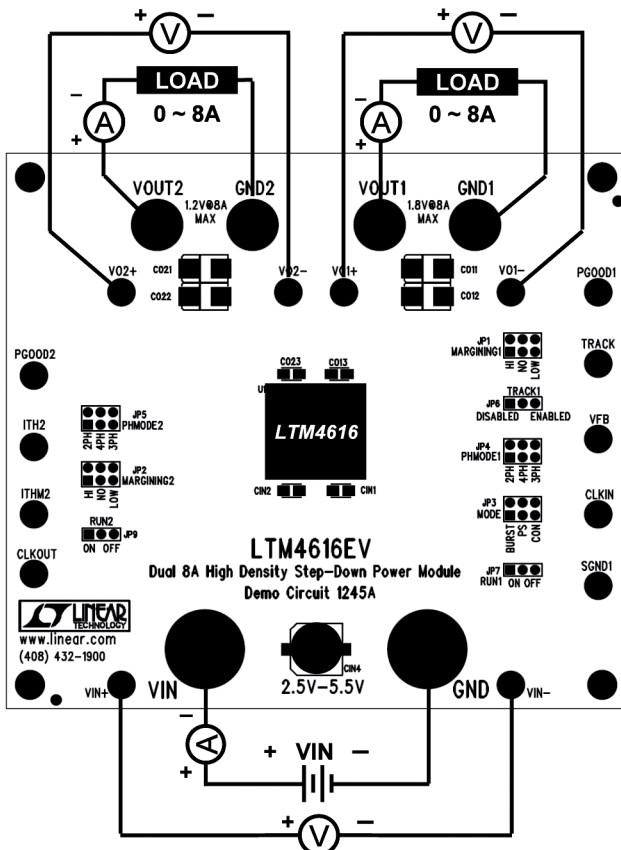


Figure 1. Test Setup of DC1245A

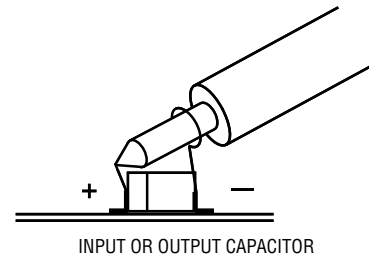


Figure 2. Proper Scope Probe Placement for Measuring Input or Output Ripple

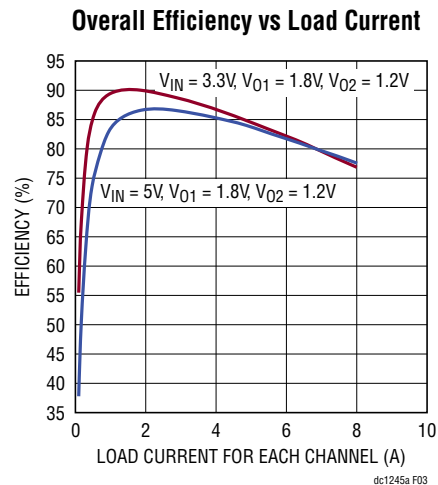
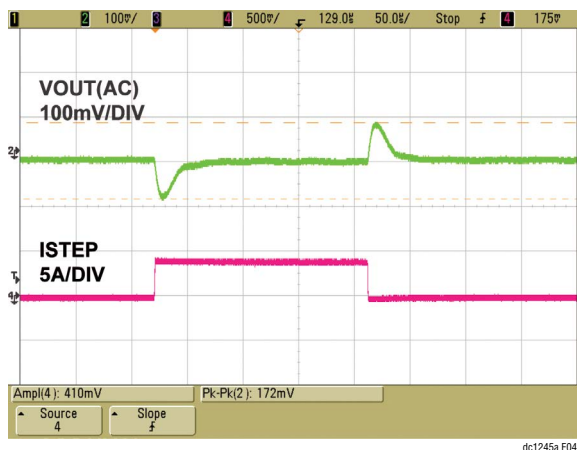


Figure 3. Measured Overall Supply Efficiency with Different V_{IN}

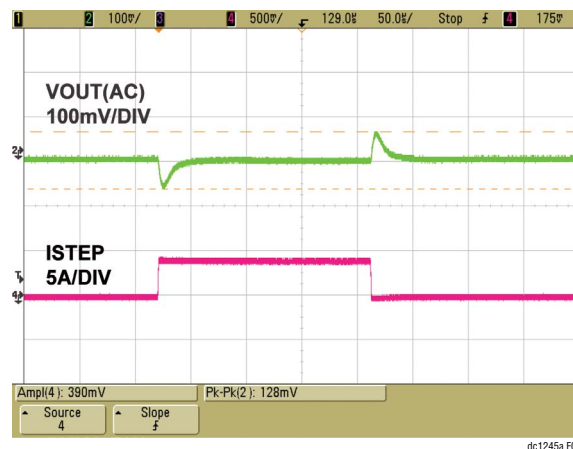
QUICK START PROCEDURE

- Channel 2 is set up to synchronize to the CLKOUT signal of channel 1. The default phase difference is 180°. Please refer to data sheet for how to set up PHMODE1 and PHMODE2 for paralleling more than 2 channels.



$V_{IN} = 3.3V$
 $V_{OUT} = 1.8V$
 CONTINUOUS CURRENT MODE (CCM)
 2A TO 6A LOAD STEP
 $C_{OUT} = \times 2 \text{ } 100\mu\text{F CERAMIC (1210, X5R, 6.3V) + 22}\mu\text{F CERAMIC (0805, X5R, 6.3V)}$
 $C_{FF1} = 47\text{pF}$
 $V_{OUT} \text{ OVERSHOOT AND UNDERSHOOT} = 172\text{mV}$

Figure 4. Measured Load Transient Response for 1.8V_{OUT} (4A Step, 25% to 75%)



$V_{IN} = 3.3V$
 $V_{OUT} = 1.2V$
 CONTINUOUS CURRENT MODE (CCM)
 2A TO 6A LOAD STEP
 $C_{OUT} = \times 2 \text{ } 100\mu\text{F CERAMIC (1210, X5R, 6.3V) + 22}\mu\text{F CERAMIC (0805, X5R, 6.3V)}$
 $C_{FF2} = 0\text{pF}$
 $V_{OUT} \text{ OVERSHOOT AND UNDERSHOOT} = 128\text{mV}$

Figure 5. Measured Load Transient Response for 1.2V_{OUT} (4A Step, 25% to 75%)

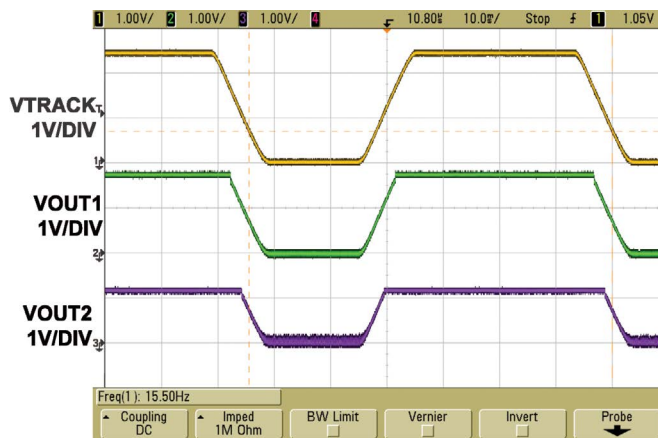


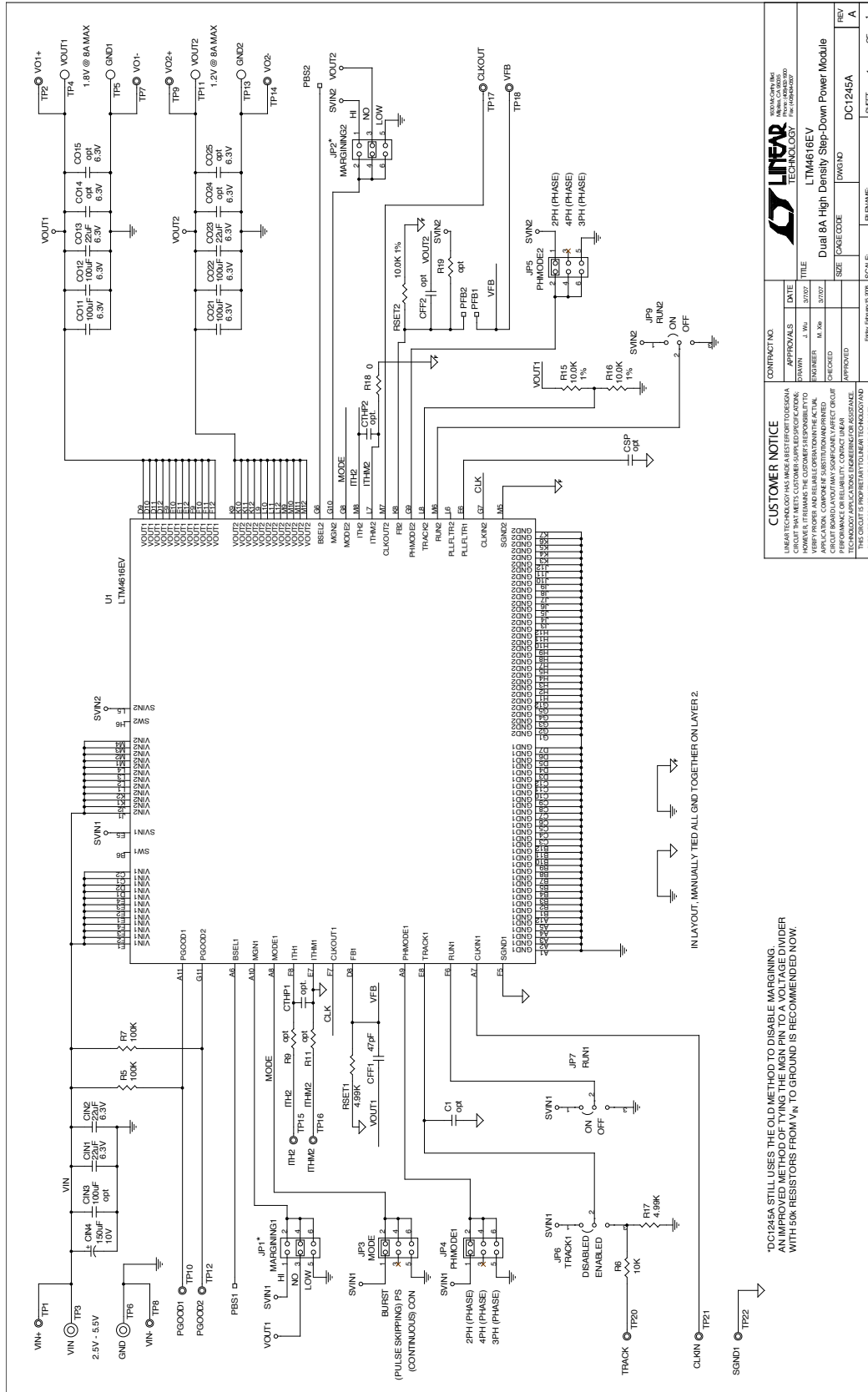
Figure 6. Measured Tracking Performance of V_{OUT1} and V_{OUT2} (with 2A Load Current)

DEMO MANUAL DC1245A

PARTS LIST

ITEM	QTY	REFERENCE	PART DESCRIPTION	MANUFACTURER/PART NUMBER
Required Circuit Components				
1	4	CIN1, CIN2, C013, C023	Capacitor, X5R, 22 μ F, 6.3V, 20%, 1206	AVX, 12066D226MAT2A
2	1	CIN4	Capacitor, OS-CON, 150 μ F, 10V, E7 Size	Sanyo, 10SVPA150MAA
3	4	C011, C012, C021, C022	Capacitor, X5R, 100 μ F, 6.3V, 20%, 1210	AVX, 12106D107MAT2A
4	1	RSET1	Resistor, Chip, 4.99k, 1/16W, 1%, 0402	Vishay, CRCW04024K99FKED
5	1	RSET2	Resistor, Chip, 10k, 1/16W, 1%, 0402	Vishay, CRCW040210K0FKED
6	1	U1	IC LTM4616EV 144-Pin LGA	Linear Technology, LTM4616EV
Additional Demo Board Circuit Components				
1	0	C014, C015, C024, C025 (OPT)	Capacitor, 1210-3743	
2	2	R7, R5	Resistor, Chip, 100k, 1/16W, 5%, 0402	Vishay, CRCW0402100KJNED
3	0	R9, R11, R19 (OPT)	Resistor, Chip, 0402	
4	0	CTHP1, CTHP2, C1, CFF2, CSP (OPT)	Capacitor, 0402	
5	1	CFF1	Capacitor, COG, 47pF, 50V, 10%, 0402	AVX, 04025A470KAT2A
6	1	R17	Resistor, Chip, 4.99k, 1/16W, 1%, 0402	Vishay, CRCW04024K99FKED
7	3	R15, R16, R6	Resistor, Chip, 10k, 1/16W, 1%, 0402	Vishay, CRCW040210K0FKED
8	1	R18	Resistor, Chip, 0, 1/16W, 0402	Vishay, CRCW04020000Z0ED
Hardware/Components (For Demo Board Only)				
1	0	CIN3(OPT)	Capacitor, 1210-3743	
2	5	JP1, JP2, JP3-JP5	2 \times 3, 0.079 Double Row Header	Samtec, TMM103-02-L-D
3	3	JP6, JP7, JP9	Header 3-Pin 0.079 Single Row	Samtec, TMM103-02-L-S
4	8	JP1-JP7, JP9	Shunt, 0.079" Center	Samtec, 2SN-BK-G
5	15	TP1, TP2, TP7-TP10, TP12, TP14-TP18, TP20-TP22	Testpoint, Turret, 0.094" Pbf	Mill-Max, 2501-2-00-80-00-00-07-0
6	2	TP6, TP3	Stud, Test Pin	PEM KFH-032-10
7	4	TP6, TP3	Nut, Brass Nuts #10-32	Any #10-32
8	2	TP6, TP3	Ring, Lug Ring #10	Keystone #10
9	2	TP6, TP3	Washer, Tin Plated Brass	Any #10
10	4	TP4, TP5, TP11, TP13	Jack Banana	Keystone, 575-4
11	4	(STAND-OFF)	Stand-Off, Nylon 0.50"	Keystone, 8833(SNAP ON)

SCHEMATIC DIAGRAM



CUSTOMER NOTICE		CONTRACT NO.	
<p>LINEAR TECHNOLOGY CORPORATION 2600 COUNTRY CLUB DRIVE FOLSOM, CA 95630 TEL: 916 351 7000 FAX: 916 351 7001 WWW.LINEARTECH.COM</p>			
<p>LINEAR TECHNOLOGY LTM4618EV Dual 8A High Density Step-Down Power Module</p>		<p>DATE: 3/27/07 ENGINEER: M. XIE CHECKED: M. XIE APPROVED: M. XIE</p>	
<p>HOWEVER, IT REMAINS THE CUSTOMER'S RESPONSIBILITY TO VERIFY THAT THE CIRCUIT MEETS CUSTOMER SPECIFICATIONS. LINEAR TECHNOLOGY MAKES NO REPRESENTATION OR WARRANTY, EXPRESS OR IMPLIED, REGARDING THE PERFORMANCE OF THIS CIRCUIT IN ANY OTHER APPLICATION. CUSTOMER'S SUBSTITUTION OF COMPONENTS OR THE USE OF THIS CIRCUIT IN ANY OTHER APPLICATION IS AT THE CUSTOMER'S RISK. LINEAR TECHNOLOGY ASSUMES NO LIABILITY FOR DAMAGES OF ANY KIND, INCLUDING CONSEQUENTIAL DAMAGES, ARISING FROM THE USE OF THIS CIRCUIT. THIS CIRCUIT IS PROPRIETARY TO LINEAR TECHNOLOGY AND SUPPLIED FOR USE WITH LINEAR TECHNOLOGY PARTS.</p>		<p>SCALE: 1:1 SHEET: 1 OF 1</p>	

DEMO MANUAL DC1245A

DEMONSTRATION BOARD IMPORTANT NOTICE

Linear Technology Corporation (LTC) provides the enclosed product(s) under the following **AS IS** conditions:

This demonstration board (DEMO BOARD) kit being sold or provided by Linear Technology is intended for use for **ENGINEERING DEVELOPMENT OR EVALUATION PURPOSES ONLY** and is not provided by LTC for commercial use. As such, the DEMO BOARD herein may not be complete in terms of required design-, marketing-, and/or manufacturing-related protective considerations, including but not limited to product safety measures typically found in finished commercial goods. As a prototype, this product does not fall within the scope of the European Union directive on electromagnetic compatibility and therefore may or may not meet the technical requirements of the directive, or other regulations.

If this evaluation kit does not meet the specifications recited in the DEMO BOARD manual the kit may be returned within 30 days from the date of delivery for a full refund. **THE FOREGOING WARRANTY IS THE EXCLUSIVE WARRANTY MADE BY THE SELLER TO BUYER AND IS IN LIEU OF ALL OTHER WARRANTIES, EXPRESSED, IMPLIED, OR STATUTORY, INCLUDING ANY WARRANTY OF MERCHANTABILITY OR FITNESS FOR ANY PARTICULAR PURPOSE. EXCEPT TO THE EXTENT OF THIS INDEMNITY, NEITHER PARTY SHALL BE LIABLE TO THE OTHER FOR ANY INDIRECT, SPECIAL, INCIDENTAL, OR CONSEQUENTIAL DAMAGES.**

The user assumes all responsibility and liability for proper and safe handling of the goods. Further, the user releases LTC from all claims arising from the handling or use of the goods. Due to the open construction of the product, it is the user's responsibility to take any and all appropriate precautions with regard to electrostatic discharge. Also be aware that the products herein may not be regulatory compliant or agency certified (FCC, UL, CE, etc.).

No License is granted under any patent right or other intellectual property whatsoever. **LTC assumes no liability for applications assistance, customer product design, software performance, or infringement of patents or any other intellectual property rights of any kind.**

LTC currently services a variety of customers for products around the world, and therefore this transaction **is not exclusive**.

Please read the DEMO BOARD manual prior to handling the product. Persons handling this product must have electronics training and observe good laboratory practice standards. **Common sense is encouraged.**

This notice contains important safety information about temperatures and voltages. For further safety concerns, please contact a LTC application engineer.

Mailing Address:

Linear Technology
1630 McCarthy Blvd.
Milpitas, CA 95035

Copyright © 2004, Linear Technology Corporation

Mouser Electronics

Authorized Distributor

Click to View Pricing, Inventory, Delivery & Lifecycle Information:

[Analog Devices Inc.:](#)

[DC1245A](#)