

CDL4U(E)MOV¹



MOV

12 mm

54 x 55.5 mm

9 mm

Polyamide 6.6

4 screw clamps

22-10 AWG

30, 60, 75, 130, 275, 460, 510, 625, 680 V AC

-

2kA-6.5kA (8/20µs)

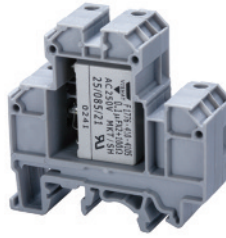
<25ns

-

100-20,000 pf

For protection from voltage surge, spikes

CDL4U(E)RC



RC Circuit

18 mm

54 x 55.5 mm

9 mm

Polyamide 6.6

4 screw clamps

22-10 AWG

250 V AC / 630 V DC

20A

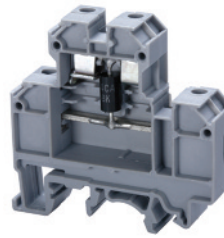
-

-

0.1 µf or 0.22 µf

For protection of DC solenoid valves and contactors

CDL4U(E)SD



Suppressor Diode

12 mm

54 x 55.5 mm

9 mm

Polyamide 6.6

4 screw clamps

22-10 AWG

12-48V DC / 12-160V AC**

1.5 KA

-

1 ns DC / 5 ns AC

-

-

For fine protection of data interfaces, sensors, contacts, etc.

Cat. No. **Std. Pk.**

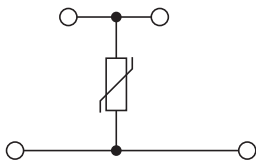
CDL4U(E)MOV30V 20
 CDL4U(E)MOV60V 20
 CDL4U(E)MOV75V 20
 CDL4U(E)MOV130V 20
 CDL4U(E)MOV275V 20
 CDL4U(E)MOV460V 20
 CDL4U(E)MOV510V 20
 CDL4U(E)MOV625V 20
 CDL4U(E)MOV680V 20

EPCDL4U 50



CA702 50
 CA802 50

MT2 100



Cat. No. **Std. Pk.**

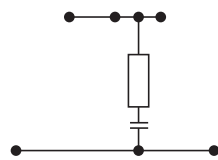
CDL4U(E)RC0.1 20
 CDL4U(E)RC0.22 20

EPCDL4U 50



CA702 50
 CA802 50

MT2 100



Cat. No. **Std. Pk.**

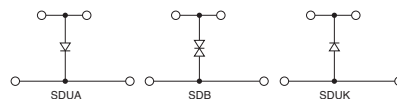
CDL4U(E)SDUA15V 20
 CDL4U(E)SDUA24V 20
 CDL4U(E)SDUA48V 20
 CDL4U(E)SDUK15V 20
 CDL4U(E)SDUK24V 20
 CDL4U(E)SDUK48V 20
 CDL4U(E)SDB15V 20
 CDL4U(E)SDB24V 20
 CDL4U(E)SDB48V 20
 CDL4U(E)SDB160V 20

EPCDL4U 50



CA702 50
 CA802 50

MT2 100



Note:
 CDL4U(E)SDU - For D.C. Application
 CDL4U(E)SDB - For A.C. Application
 A - Anode
 K - Cathode

¹ A fuse block is recommended to protect MOV terminals by disconnecting the faulted varistor. See pages 21-25 for fuse blocks.
 ** Phase to Phase / Phase to ground.

Mouser Electronics

Authorized Distributor

Click to View Pricing, Inventory, Delivery & Lifecycle Information:

Altech:

[CDL4U\(E\)MOV510V](#) [CDL4U\(E\)SDUA24V](#) [CDL4U\(E\)MOV30V](#) [CDL4U\(E\)MOV60V](#) [CDL4U\(E\)RC0.22](#)
[CDL4U\(E\)SDB15V](#) [CDL4U\(E\)SDB24V](#) [CDL4U\(E\)MOV275V](#) [CDL4U\(E\)MOV680V](#) [CDL4U\(E\)MOV75V](#)
[CDL4U\(E\)MOV625V](#) [CDL4U\(E\)MOV130V](#) [CDL4U\(E\)RC0.1](#)