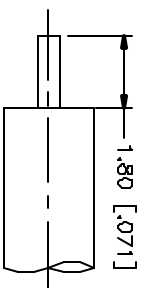
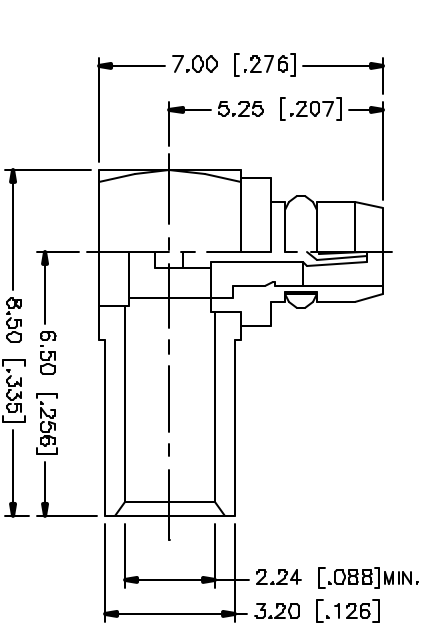
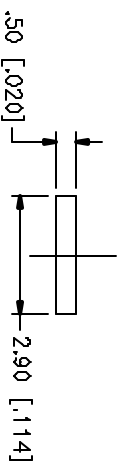
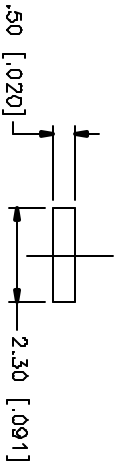


REV.	DATE	DESCRIPTION
A	05/01/04	UPDATE DRAWING FORMAT



RECOMMENDED CABLE STRIPPING DIM'S.



NOTE:

1. CONTACT PIN TO SOLDER

REV.	DATE	DESCRIPTION
B		
7		
6		
5		
4		
3		
2		
1		

DESCRIPTION	MATERIAL	FINISH	QTY
COVER	BRASS	GOLD	1
INSULATOR	TEFLON	NATURAL	1
RETAINER RING	BER. COPPER	GOLD	1
CONTACT PIN	BRASS	GOLD	1
INSULATOR	TEFLON	NATURAL	1
BODY	BRASS	GOLD	1
DESCRIPTION	MATERIAL	FINISH	QTY

UNLESS OTHERWISE SPECIFIED DIMENSIONS ARE IN MILLIMETERS (PARENTS IN 1/16" ARE IN INCHES AND FOR DIMENSIONS REFER TO THIS)	UNLESS OTHERWISE SPECIFIED DIMENSIONS FOR MILLIMETER ARE:	UNLESS OTHERWISE SPECIFIED DIMENSIONS FOR INCHES ARE:
0.5 - .30mm ± 0.20mm	8 - .30mm ± 0.40mm	30 - .120mm ± 0.50mm
.020 - .315 = ± 0.007°	.315 - 1.180 = ± 0.015°	1.180 - 4.724 = ± 0.020°

DO NOT SCALE DRAWING	APPROVALS	DATE
	DRAWN G.R.S.	05/01/04
	CHECKED	
	INSLED	
	BRCT 1 OF 1	

LEAD FILE	PART NO.	PART DESCRIPTION
C:/262/262113.DWG	262113	MMCX R/A SEMI-RIGID PLUG (FOR .085", .086")

DWG. NO.	REV.	SIZE	SCALE
262113.DWG	A	A	NA

Amphenol Connex

Mouser Electronics

Authorized Distributor

Click to View Pricing, Inventory, Delivery & Lifecycle Information:

[Amphenol:](#)

[262113](#)