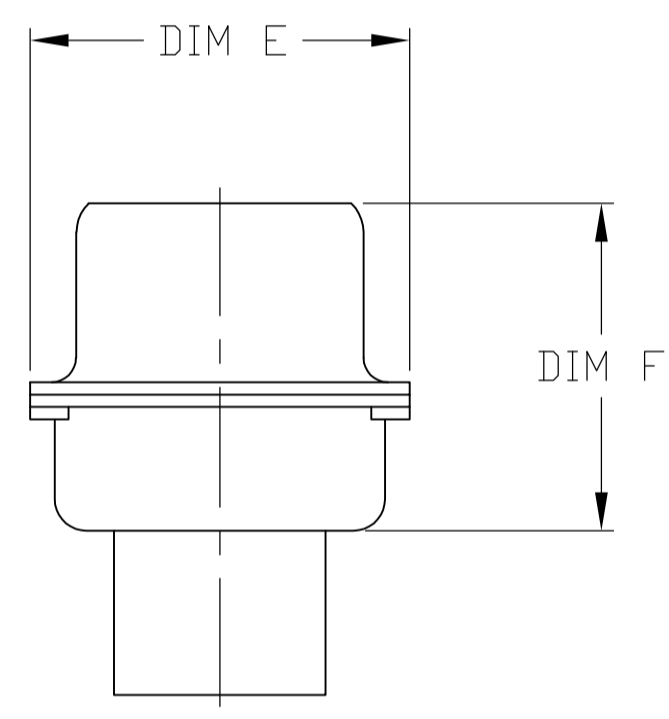
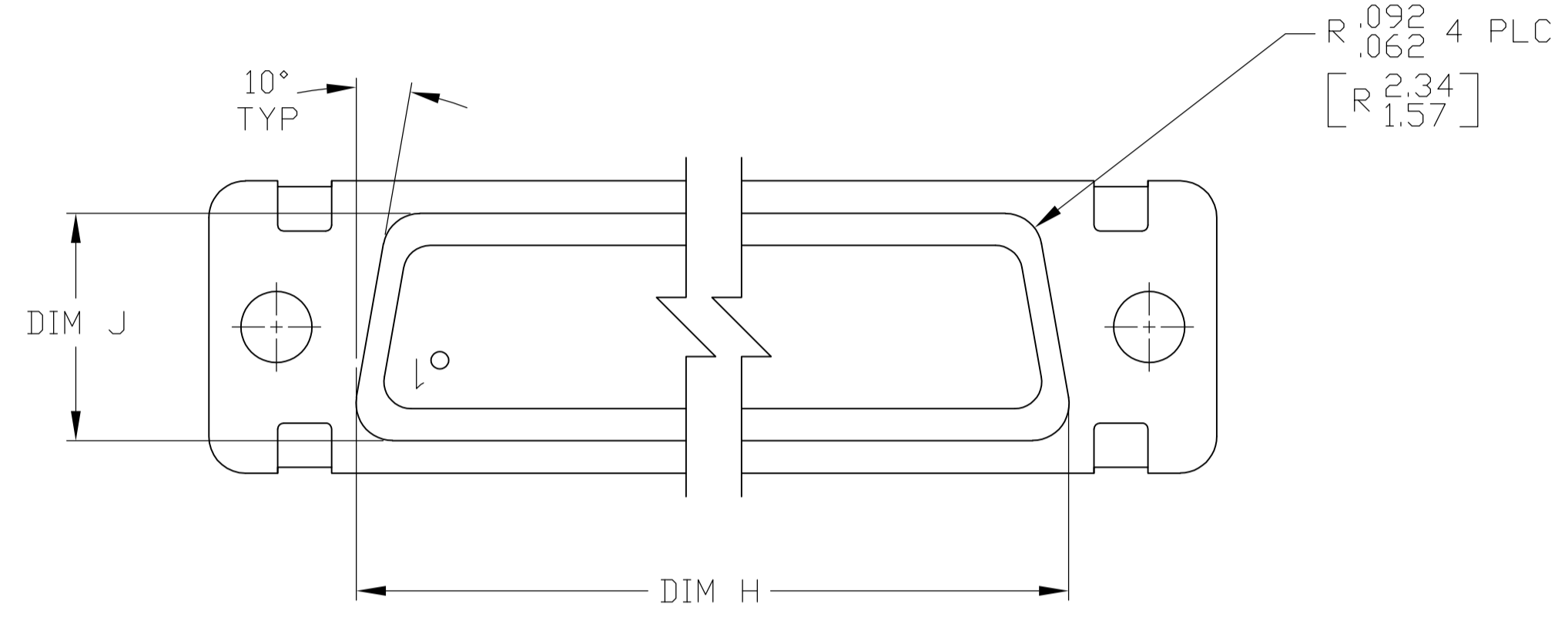
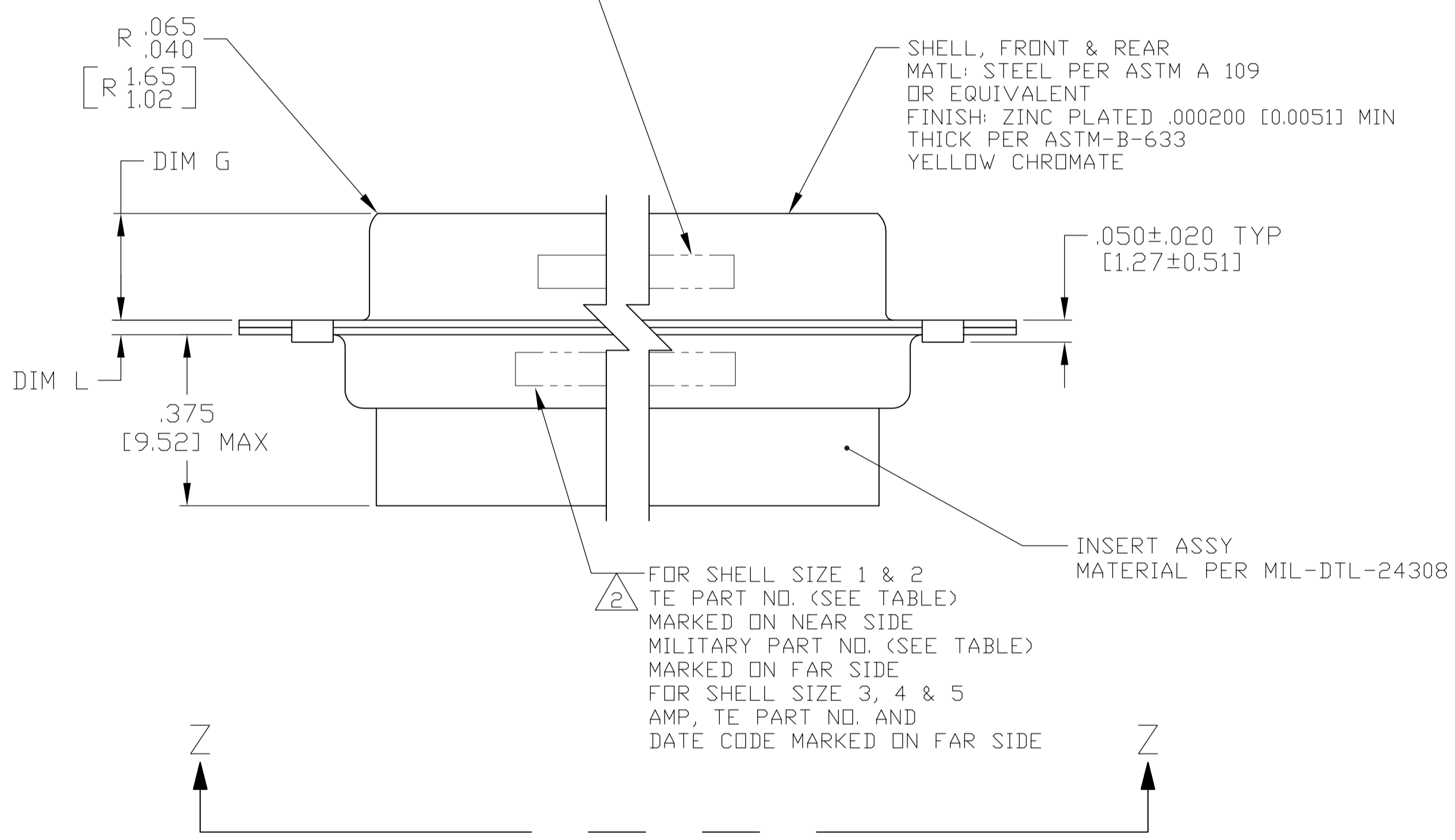


| REVISES | | DATE | BY | APP'D |
|---------|-----------------------|---------|----|-------|
| NO. | DESCRIPTION | | | |
| 1 | REV PER ECO-15-016062 | 09NOV15 | KG | CD |



- THE CONNECTOR DESCRIBED IN THIS DOCUMENT WILL MATE WITH ANY RECEPTACLE CONNECTOR WITH THE SAME INSERT ARRANGEMENT.
- MARKED WITH .047-.062 [1.19-1.57] HIGH CHARACTERS. FAR SIDE REFERS TO THE WIDE SIDE OF THE KEYSTONE. NEAR SIDE REFERS TO THE NARROW SIDE OF THE KEYSTONE. WHEN SPACE IS LIMITED MARKING CAN BE SPLIT BETWEEN FRONT AND REAR SHELL.
- UL/CSA DESIGNATION STAMPED IN THIS AREA.
- CONNECTOR ASSEMBLY WITHOUT CONTACTS, TE CONNECTIVITY P/N 205089-1. MUST BE ORDERED SEPARATELY.
- CONNECTOR ASSEMBLY SUPPLIED WITH CONTACTS, TE CONNECTIVITY P/N 205089-1. PACKAGED IN A SEPARATE CONTAINER. QTY = NO. OF POSN. (SEE TABLE).

FOR SHELL SIZE 1 & 2 AMP & DATE CODE MARKED ON NEAR SIDE FOR SHELL SIZE 3, 4 & 5 MILITARY PART NO. MARKED ON FAR SIDE



VIEW Z-Z
 SIZE 20 PIN CONTACT
 MATERIAL: COPPER ALLOY PER MIL-C-39029 & MIL-DTL-24308.
 PLATING: GOLD PER ASTM-B-488 (TYPEII) OVER NICKEL PER AMS-QQ-N-290.

| REMARKS | MILITARY P/N ON PACKAGE | MILITARY P/N ON CONNECTOR | MARKED TE PART NUMBER | L | J | H | G | F | E | D | C | B | A | INSERT ARRANGEMENT | NO OF POS | SHELL SIZE | PART NUMBER |
|---------|-------------------------|---------------------------|-----------------------|----------------------------|------------------------------|--------------------------------|----------------------------|------------------------------|------------------------------|------------------------------|--------------------------------|--------------------------------|--------------------------------|--------------------|-----------|------------|-------------|
| 5 | M24308/4-5Z | M24308/4-5Z | 1-1757819-0 | .049 [1.24] .029 [0.74] | .544 [13.82] .524 [13.31] | 2.188 [55.58] 2.168 [55.07] | .236 [5.99] .224 [5.69] | .436 [11.07] .416 [10.57] | .620 [15.75] .590 [14.99] | .446 [11.33] .436 [11.07] | 2.411 [61.24] 2.401 [60.99] | 2.084 [52.93] 2.074 [52.68] | 2.650 [67.31] 2.620 [66.55] | MS18277-1 | 50 | 5 | 1-1757819-0 |
| 5 | M24308/4-4Z | M24308/4-4Z | 1757819-9 | .049 [1.24] .029 [0.74] | .432 [10.97] .412 [10.46] | 2.282 [57.96] 2.262 [57.45] | .236 [5.99] .224 [5.69] | .436 [11.07] .416 [10.57] | .509 [12.93] .479 [12.17] | .334 [8.48] .324 [8.23] | 2.505 [63.63] 2.495 [63.37] | 2.187 [55.55] 2.177 [55.30] | 2.744 [69.70] 2.714 [68.94] | MS18276-1 | 37 | 4 | 1757819-9 |
| 5 | M24308/4-3Z | M24308/4-3Z | 1757819-8 | .049 [1.24] .029 [0.74] | .432 [10.97] .412 [10.46] | 1.635 [41.53] 1.615 [41.02] | .236 [5.99] .224 [5.69] | .436 [11.07] .416 [10.57] | .509 [12.93] .479 [12.17] | .334 [8.48] .324 [8.23] | 1.857 [47.17] 1.847 [46.91] | 1.539 [39.09] 1.529 [38.84] | 2.103 [53.42] 2.073 [52.65] | MS18275-1 | 25 | 3 | 1757819-8 |
| 5 | M24308/4-2Z | M24308/4-2Z | 1757819-7 | .040 [1.02] .020 [0.51] | .432 [10.97] .412 [10.46] | 1.093 [27.76] 1.073 [27.25] | .238 [6.05] .229 [5.82] | .432 [10.97] .412 [10.46] | .509 [12.93] .479 [12.17] | .334 [8.48] .324 [8.23] | 1.317 [33.45] 1.307 [33.20] | .999 [25.37] .989 [25.12] | 1.556 [39.52] 1.526 [38.76] | MS18274-1 | 15 | 2 | 1757819-7 |
| 5 | M24308/4-1Z | M24308/4-1Z | 1757819-6 | .040 [1.02] .020 [0.51] | .432 [10.97] .412 [10.46] | .769 [19.53] .749 [19.02] | .238 [6.05] .229 [5.82] | .432 [10.97] .412 [10.46] | .509 [12.93] .479 [12.17] | .334 [8.48] .324 [8.23] | .989 [25.12] .979 [24.87] | .671 [17.04] .661 [16.79] | 1.228 [31.19] 1.198 [30.43] | MS18273-1 | 9 | 1 | 1757819-6 |
| 4 | M24308/4-263Z | M24308/4-5Z | 1-1757819-0 | .049 [1.24] .029 [0.74] | .544 [13.82] .524 [13.31] | 2.188 [55.58] 2.168 [55.07] | .236 [5.99] .224 [5.69] | .436 [11.07] .416 [10.57] | .620 [15.75] .590 [14.99] | .446 [11.33] .436 [11.07] | 2.411 [61.24] 2.401 [60.99] | 2.084 [52.93] 2.074 [52.68] | 2.650 [67.31] 2.620 [66.55] | MS18277-1 | 50 | 5 | 1757819-5 |
| 4 | M24308/4-262Z | M24308/4-4Z | 1757819-9 | .049 [1.24] .029 [0.74] | .432 [10.97] .412 [10.46] | 2.282 [57.96] 2.262 [57.45] | .236 [5.99] .224 [5.69] | .436 [11.07] .416 [10.57] | .509 [12.93] .479 [12.17] | .334 [8.48] .324 [8.23] | 2.505 [63.63] 2.495 [63.37] | 2.187 [55.55] 2.177 [55.30] | 2.744 [69.70] 2.714 [68.94] | MS18276-1 | 37 | 4 | 1757819-4 |
| 4 | M24308/4-261Z | M24308/4-3Z | 1757819-8 | .049 [1.24] .029 [0.74] | .432 [10.97] .412 [10.46] | 1.635 [41.53] 1.615 [41.02] | .236 [5.99] .224 [5.69] | .436 [11.07] .416 [10.57] | .509 [12.93] .479 [12.17] | .334 [8.48] .324 [8.23] | 1.857 [47.17] 1.847 [46.91] | 1.539 [39.09] 1.529 [38.84] | 2.103 [53.42] 2.073 [52.65] | MS18275-1 | 25 | 3 | 1757819-3 |
| 4 | M24308/4-260Z | M24308/4-2Z | 1757819-7 | .040 [1.02] .020 [0.51] | .432 [10.97] .412 [10.46] | 1.093 [27.76] 1.073 [27.25] | .238 [6.05] .229 [5.82] | .432 [10.97] .412 [10.46] | .509 [12.93] .479 [12.17] | .334 [8.48] .324 [8.23] | 1.317 [33.45] 1.307 [33.20] | .999 [25.37] .989 [25.12] | 1.556 [39.52] 1.526 [38.76] | MS18274-1 | 15 | 2 | 1757819-2 |
| 4 | M24308/4-259Z | M24308/4-1Z | 1757819-6 | .040 [1.02] .020 [0.51] | .432 [10.97] .412 [10.46] | .769 [19.53] .749 [19.02] | .238 [6.05] .229 [5.82] | .432 [10.97] .412 [10.46] | .509 [12.93] .479 [12.17] | .334 [8.48] .324 [8.23] | .989 [25.12] .979 [24.87] | .671 [17.04] .661 [16.79] | 1.228 [31.19] 1.198 [30.43] | MS18273-1 | 9 | 1 | 1757819-1 |

THIS DRAWING IS A CONTROLLED DOCUMENT.

STE TE Connectivity

AMPLIMITE PLUG ASSY, SIZE 1 THRU 5 SERIES 109 WITH ZINC PLATED SHELLS

APPROVED: D. MILLER

DATE: 5-17-05

SCALE: 4:1

SHEET 1 OF 1

Mouser Electronics

Authorized Distributor

Click to View Pricing, Inventory, Delivery & Lifecycle Information:

[TE Connectivity:](#)

[1757819-4](#)