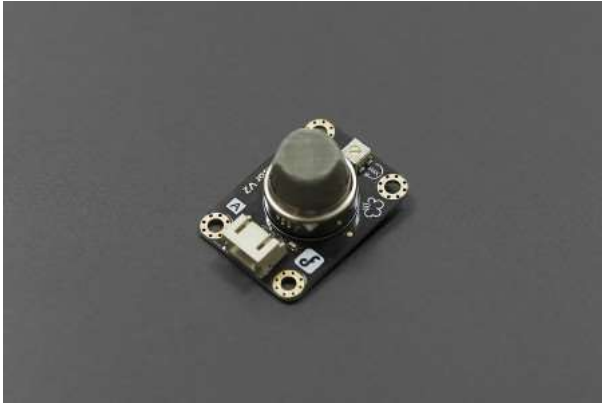


Introduction



(<https://www.dfrobot.com/product-685.html>)

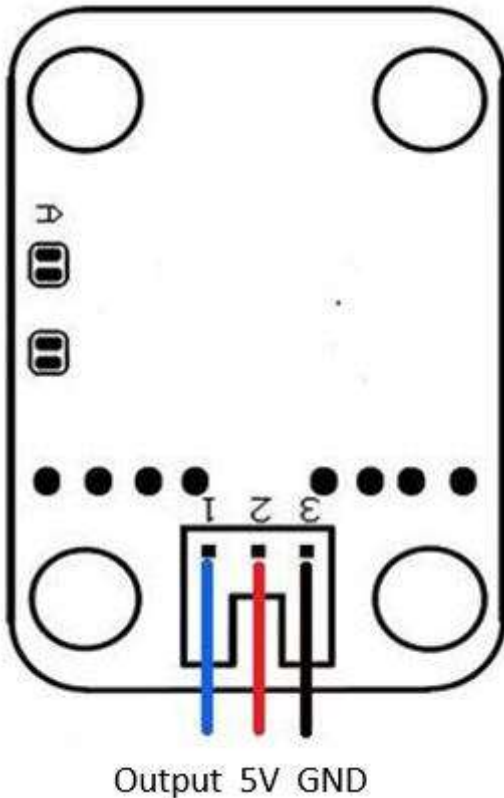
The MQ6 (LPG Gas Sensor) (<https://www.dfrobot.com/product-685.html>) is a simple-to-use liquefied petroleum gas (LPG) sensor. It can be used in gas leakage detecting equipment in consumer and industry applications, this sensor is suitable for detecting LPG, iso-butane, propane, LNG. Avoid the noise of alcohol, cooking fumes and cigarette smoke. The sensitivity can be adjusted by the potentiometer.

Specification

- Power supply needs: 5V
- Interface type: Analog
- Pin Definition: 1-Output 2-GND 3-VCC
- High sensitivity to LPG, iso-butane, propane
- Small sensitivity to alcohol, smoke
- Fast response
- Stable and long life
- Simple drive circuit
- Size: 40x20mm

Board Overview

1. Signal Output
2. GND
3. Power



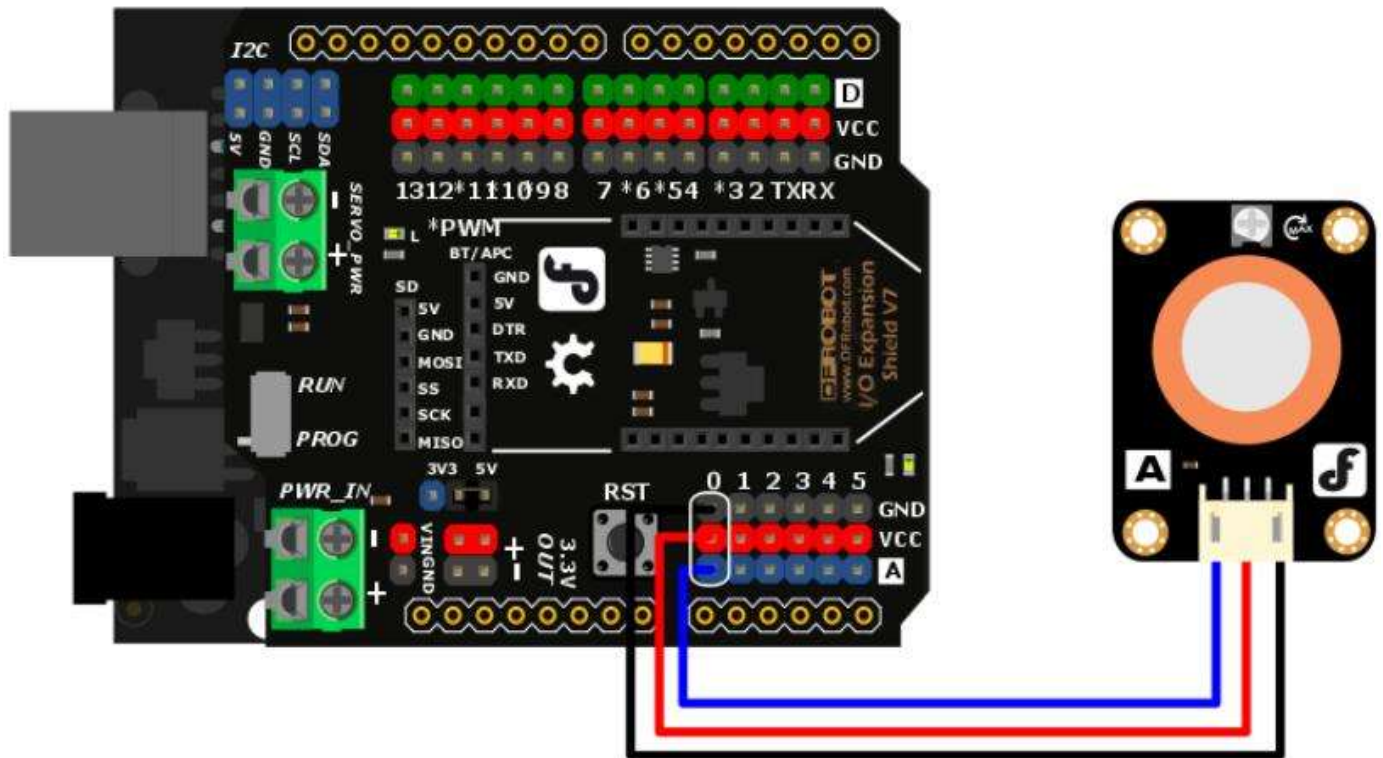
Num	Label	Description
1	Output	Signal Output
2	5V	Power
3	GND	GND

Tutorial

Requirements

- **Software**
 - Arduino IDE (<https://www.arduino.cc/en/Main/Software>)
 - Download and install the **XXX Library** (https://github.com/DFRobot/DFRobot_MCP4725)
(About how to install the library?
(<https://www.arduino.cc/en/Guide/Libraries#.UxU8mdzF9H0>))

Connection Diagram



Sample Code

```

///Arduino Sample Code
void setup()
{
  Serial.begin(9600); //Set serial baud rate to 9600 bps
}
void loop()
{
  int val;
  val=analogRead(0); //Read Gas value from analog 0
  Serial.println(val,DEC); //Print the value to serial port
  delay(100);
}

```

More Documents



Get Gravity: Analog Propane Gas Sensor (MQ6) For Arduino

(<https://www.dfrobot.com/product-685.html>) from DFRobot Store or DFRobot Distributor.

(<https://www.dfrobot.com/index.php?route=information/distributorslogo>)

Turn to the Top