

Honeywell

FED. MFG. CODE 91929

SWITCH-BASIC

CATALOG LISTING

V7-6C37E9-036

CW-C6037

CATALOG LISTING

M

V7-6C37E9-036

ISSUE

2

REPLACES

RELEASE NO PR-20992

CHECK

REVISIONS

A 0041196

JA

01 JUL 08

CHECK

01 JUL 08

CHECK

ASD

CHECK

16 FEB 94

CHECK

DCS

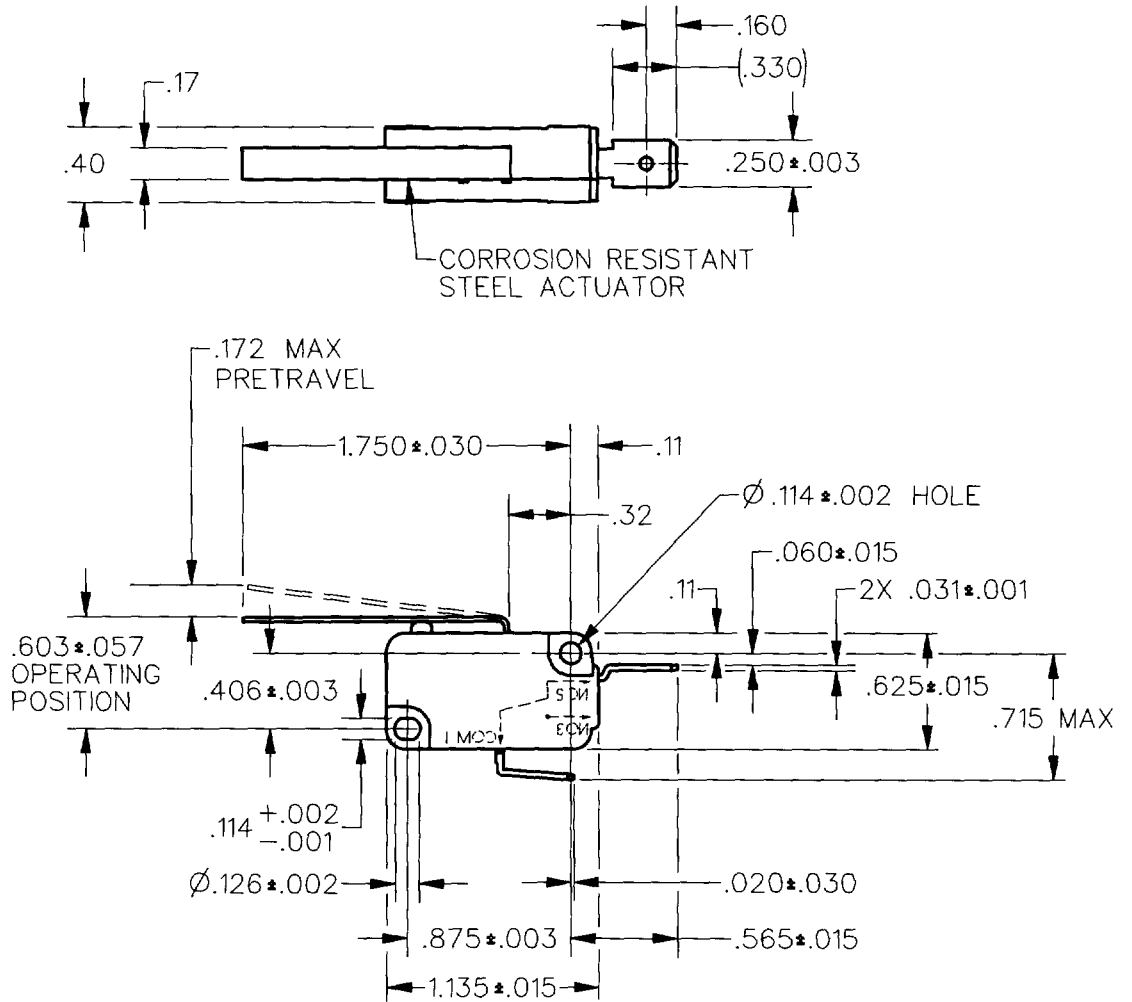
CHECK

22 NOV 93

DRAWN

DCS

DCS

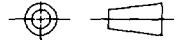


CORROSION RESISTANT STEEL ACTUATOR

ANSI Y14.5M-1982 APPLIES

THIS DRAWING COVERS A PROPRIETARY ITEM AND IS THE PROPERTY OF HONEYWELL. THIS DRAWING IS NOT TO BE COPIED OR USED WITHOUT THE APPROVAL OF HONEYWELL.

THIRD ANGLE PROJECTION



CHARACTERISTICS	ELECTRICAL DATA
OPERATING FORCE — — — — 6 OZ MAX	CONTACT ARRANGEMENT S P N C
RELEASE FORCE — — — — 1 OZ MIN	L215
DIFFERENTIAL TRAVEL — — — .038 MAX	15.1A 1/2HP 125, 250 OR 277 VAC
OVERTRAVEL — — — — .091 MIN	1/2A 125 VDC
RELEASE TRAVEL — — — — .022 MIN	1/4A 250 VDC; 5A 125 VAC "L"

SCALE FULL	DO NOT SCALE PRINT
UNLESS OTHERWISE SPECIFIED TOLERANCES ARE	
ONE PLACE (.0)	$\pm .030$
TWO PLACE (.00)	$\pm .015$
THREE PLACE (.000)	$\pm .005$
ANGLES	$\pm 3^\circ$
WEIGHT	



RASTER

DRAWN

DCS 22 NOV 93 CHECK

DCS

WEIGHT