

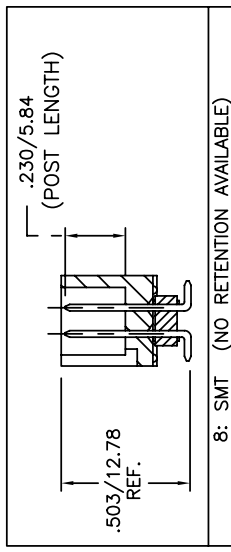
PRODUCT NUMBER
5 2 6 0 1 - X X X - X X X - X X X L F

PLATING
S=15µm [0.38µm] GOLD ON CONTACT AREA (NOTE 13)
100µm [2.54µm] TIN ON TAIL
G=30µm [0.76µm] GOLD ON CONTACT AREA (NOTE 13)
100µm [2.54µm] TIN ON TAIL

LEAD FREE OPTION
NOTE 10,11,12
PACKAGE NOTE 5
RETENTIVE LEG (NOTE 6)
POLARIZATION
NOTE 9

TAIL	—OBS.
1 .096/2-29	—OBS.
2 .142/2-84	—OBS.
4 .120/3.05	
6 .150/3.81	
7 .675/17.15	—OBS.
8 SMT	

TOTAL POSITIONS	HDR. STYLE
10	2 x 5
14	2 x 7
16	2 x 8
20	2 x 10
26	2 x 13
30	2 x 15
34	2 x 17
40	2 x 20
44	2 x 22
50	2 x 25
60	2 x 30



8: SMT (NO RETENTION AVAILABLE)

NOTES:

- HOUSING MAT'L: HIGH TEMPERATURE THERMOPLASTIC. UL94V-0 OR COLOR: BLACK
- MINERAL FILLED LCP FLAME RETARDANT PER UL-94V-0. COLOR: BLACK.
- PIN MATERIAL: PHOSPHOR-BRONZE
- TO DETERMINE DIMENSIONS:
N = NUMBER OF POSITIONS PER ROW
EXAMPLE: 10 POS.,(N-1) x .100[2.54]=.900[22.86]
- 3 LBS./1.36 KG MIN. RETENTION
- PACKAGED IN TRAYS,
PART NUMBER FOLLOWS BY "T" SUFFIX ARE PACKAGED TAPE ON ROLL WITH PACK-UP INSTALLED. VACUUM CAP TO BE CENTRALLY LOCATED REGARDLESS OF NUMBER OF POSITIONS (SHEET 3)
- RETENTIVE LEG APPLICABLE TO TAIL LENGTHS .125/3.18 MAX. 5LB/2.3KG MAX INSERTION FORCE AND .25LB./1KG MIN RETENTION FORCE PER RETENTIVE PIN USING .062/1.57 THICK CIRCUIT BOARD AND RECOMMENDED HOLE PATTERN. RETENTIVE LOCATION AT THE DISCRETION OF THE MANUFACTURER. RETENTION PIN MAY BE SHIFTED TO NEXT POSITION.
- OMIT FROM PRODUCT NUMBER IF THIS FEATURE IS NOT APPLICABLE.
- UNDERPLATING: 50µm/1.27µm Ni.
- FOR POLARIZATION SPECIFY POSITION NUMBER (i.e. 03 = PIN 3) TO OMIT PIN. OMIT FROM PRODUCT NUMBER IF THIS FEATURE IS NOT APPLICABLE.
- ADD "LF" SUFFIX AT THE END OF PART NUMBER FOR LEAD FREE OPTION.
- THE HOUSING WILL WITHSTAND EXPOSURE TO 260°C PEAK TEMPERATURE FOR 15 SECONDS IN A WAVE SOLDER APPLICATION WITH A 1.5mm MINIMUM THICK CIRCUIT BOARD. SEE APPLICATION NOTES/PROCEDURES IF THEY ARE AVAILABLE.
- THE HOUSING WILL WITHSTAND EXPOSURE TO 260°C PEAK TEMPERATURE FOR 20 SECONDS IN A CONVECTION, INFRA-RED OR VAPOR PHASE REFLOW OVEN. SEE APPLICATION NOTES/PROCEDURES IF THEY ARE AVAILABLE.
- THIS PRODUCT MEETS EUROPEAN UNION DIRECTIVES AND OTHER COUNTRY REGULATION AS DESCRIBED IN GS-22-008.
- PLATING OPTIONS:
MAY BE EITHER GOLD OR GXT PLATED AT MANUFACTURER'S OPTION.

www.fciconnect.com

Dr	surface	tolerance	projection
Eng	ISO 1302	ISO 406 ISO 1101	MM
Chr	ANGULAR	OTHERWISE SPECIFIED	
Appr	LINEAR	0.X ± 0.30	size A4
	Product family	0.XX ± 0.13	Scale 1:1
		0° ± 2.0°	ECN N10-0327
		QUICKIE	Spec ref



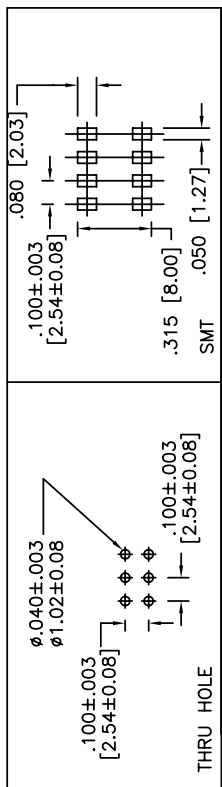
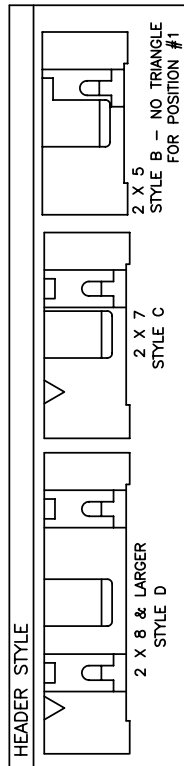
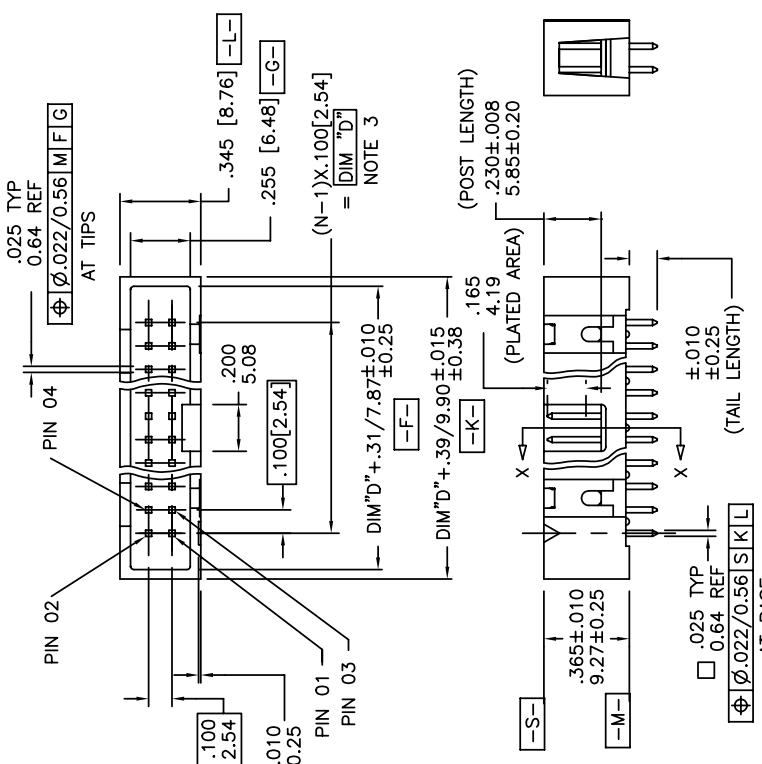
0.100/2.54MM LOW PROFILE SHROUDED VERTICAL HEADER

Rev. 52601
CUSTOMER sheet 1 of 3

rev	ecn no	dr	date
S	M08-0117	MHT	04/22/08
T	M08-0118	MHT	04/24/08
U	M08-0237	MHT	05/25/08
V	M08-0261	MHT	08/19/08
W	M08-0279	MHT	09/30/08
X	N10-0327	AZH	11/04/10



Copyright FCI



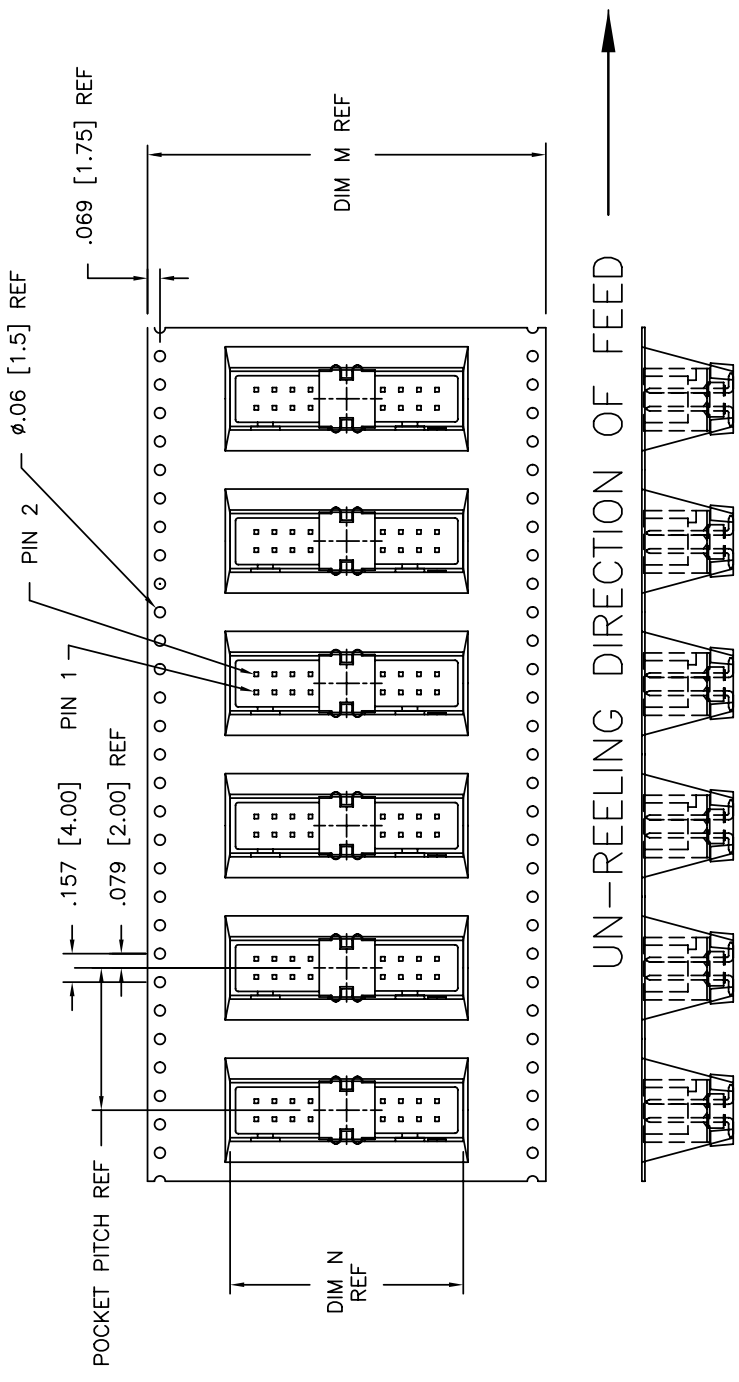
www.fciconnect.com		surface	tolerance	projection	MM
ISD 1302		ISD 406 ISD 1101			
TOLERANCES UNLESS OTHERWISE SPECIFIED					
Dr	D.INGRAM	ANGULAR	0.X ± 0.30	size	A4
Eng	L.GREEN	0° ± 20°	0.XX ± 0.13	ECN	N10-0327
Chr	L.GREEN	Product family	0.XXX ± 0.05	Spec ref	
Appr	L.GREEN	QUICKIE			
		0.100/2.54MM LOW PROFILE		Rev.	X
catalog no		SHROUDED VERTICAL HEADER		52601	
CUSTOMER		CUSTOMER		sheet 2 of 3	



Copyright FCI

PRODUCT No. NOTE 10	NO. OF POSITIONS	HSG. STYLE	POLARIZED POSITION	PACKAGING	POCKET PITCH	DIM M	DIM N
52601-S10-801T	2 X 5	B	01	TAPE-ON-REEL	0.787/20.00	1.260/32.00	0.790/20.07
52601-S10-805T	2 X 5	B	05	TAPE-ON-REEL	0.787/20.00	1.260/32.00	0.790/20.07
52601-S10-807T	2 X 5	B	07	TAPE-ON-REEL	0.787/20.00	1.260/32.00	0.790/20.07
52601-S14-807T	2 X 7	C	07	TAPE-ON-REEL	0.787/20.00	1.732/44.00	1.090/27.69
52601-S14-80714T	2 X 7	C	07,14	TAPE-ON-REEL	0.787/20.00	1.732/44.00	1.090/27.69
52601-X16-8T	2 X 8	D	-	TAPE-ON-REEL	0.787/20.00	1.732/44.00	1.090/27.69
52601-X20-8T	2 X 10	D	-	TAPE-ON-REEL	0.787/20.00	2.204/56.00	1.290/32.77
52601-X30-8T	2 X 15	D	-	TAPE-ON-REEL	0.787/20.00	2.834/72.00	1.786/45.37
52601-X40-8T	2 X 20	D	-	TAPE-ON-REEL	0.787/20.00	3.465/88.00	2.293/58.25

* SPECIAL CUSTOMER



UN-REELING DIRECTION OF FEED

www.fciconnect.com		surface ISO 1302	tolerance ISO 406 ISO 1101	projection	MM
TOLERANCES UNLESS OTHERWISE SPECIFIED		TOLERANCES UNLESS OTHERWISE SPECIFIED		size	A4
Dr	D.INGRAM	ANGULAR	LINEAR	size	Scale
Eng	L.GREEN	Ø	±20°	ECN	1:1
Chr	L.GREEN	Product family	QUICKIE	Spec ref	NID-0327
Appr	L.GREEN	Product family	QUICKIE	Spec ref	
FCI		0.100/2.54MM LOW PROFILE		Rev.	X
SHROUDED VERTICAL HEADER		CUSTOMER		52601	
catalog no		sheet 3 of 3			