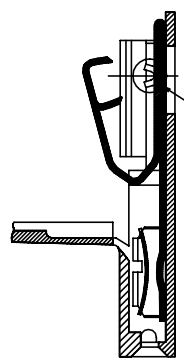
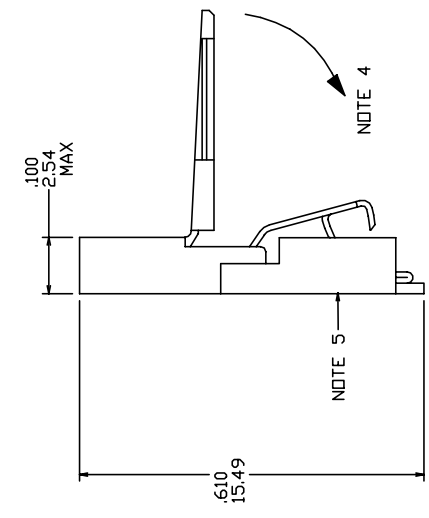
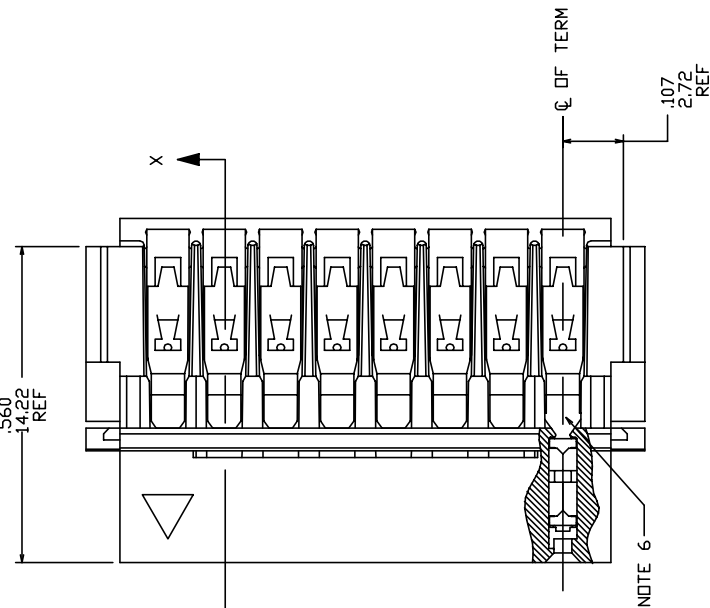
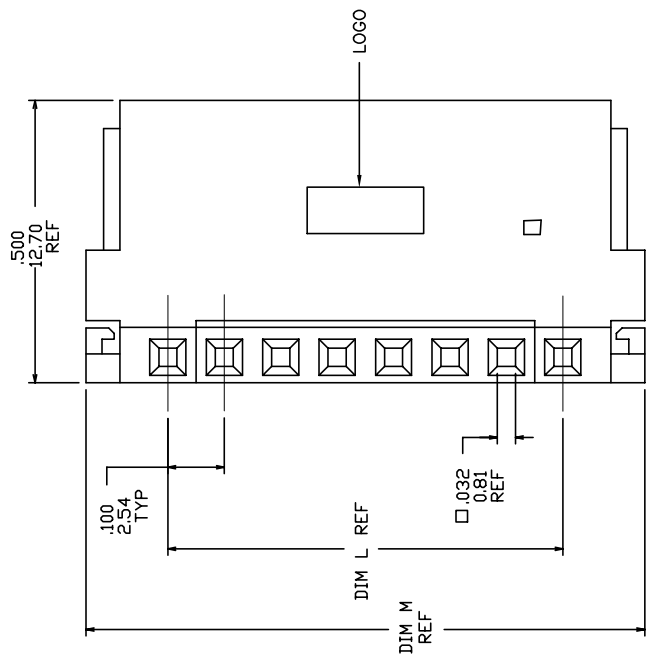


PRODUCT NUMBER
SEE TABLE



DETAIL Z
SCALE 6/1

SECTION X-X

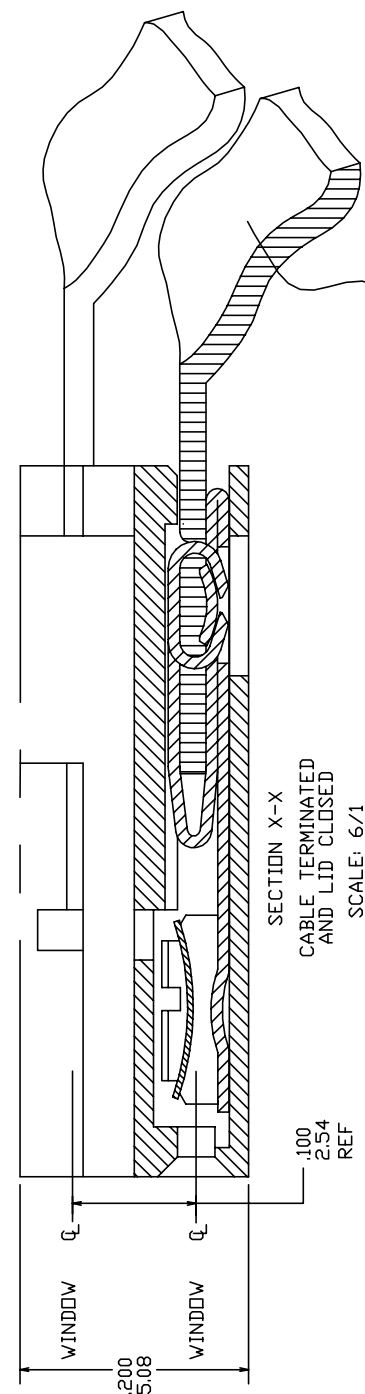
mat'l. code		surface	tolerance	projection		product family	
AN BX-H-010493		ZK	06/03/12	ISO 1302	ISO 406	ISO 1101	CLINCHER
AH V60509		HTB	3/5/96	tolerances unless otherwise specified		CLINCHER™ RECEPTACLE ASSEMBLY	
AJ M05-0087		MHT	6/15/05	linea	INCH/MM	scale 3:1	dwg no 65801
AK M06-0233		AGS	6/12/06	angles	0°±2°		sheet 1 of 7
AL M07-0088		MHT	2/06/07	T. BREWBAKER		5/17/94	A3
AM M09-0062		CMR	4/09/09	T. HANNA		5/17/94	Product Customer Drawing
sheet		revisi	dr	AN	AN	AN	
index		sheet	1	2	3	4	5
							7

PLATING AVAILABLE

TERMINAL		SPRING	
1	100u"/2.54u MIN. THICK PURE TIN	10u"/.25u MIN. THICK PURE TIN	
2	30u"/.76u MIN. GOLD DR GXT STRIPE IN BOX AREA	3u"/.08u MIN. GOLD OVER 50u"/1.27u MIN. NICKLE	

PRODUCT NUMBER
65801-XXXLF

LEAD FREE OPTION
NOTE 9,10
NO. OF POSITIONS
AND PLATING
BASE PART NUMBER



SECTION X-X
CABLE TERMINATED
AND LID CLOSED
SCALE: 6/1

NOTES:

- ① MOLDING MAT'L: THERMOPLASTIC, FLAME RETARDENT PER UL 94V-D. COLOR: BLUE.
- ② TERMINAL MAT'L: 1/2 HARD CuNi ALLOY, UNS-C72500. PLATING: SEE TABULATION AND PLATING TABLE.
- ③ SPRING MAT'L: 1/2 HARD BeCu ALLOY, UNS-C17200. PLATING: SEE TABULATION AND PLATING TABLE.
- ④ LATCH SWINGS CLOSED AFTER TERMINATION MAINTAINING A MAX OVER ALL HEIGHT OF .100/2.54
- ⑤ LABEL IN THIS AREA P/N AND DATE LOT CODE (WEEK AND YEAR) ON DASH No.-067 AND -167 ONLY.
- ⑥ KNURL MARK INDICATES FOR USE WITH INK TERMINATION. CONSULT WITH BERG ELECTRONICS TECHNICAL REPRESENTATIVE FOR SPECIFIC APPLICATIONS.
- ⑦ POSITION NUMBERS INITIATE FROM TRIANGULAR MARK ON HOUSING. SEE TABULATION FOR POSITION NO CLOSED AND TERMINAL NO ABSENT. FIG A SHOWS POSITION No 2 CLOSED.
- ⑧ AN EIGHT DIGIT PART NUMBER FOLLOWED BY A "J" INDICATES INVENTORY FOR JAPAN ONLY.
- ⑨ ADD "LF" SUFFIX AT THE END OF PART NUMBER FOR LEAD FREE OPTION.
- ⑩ THIS PRODUCT MEETS EUROPEAN UNION DIRECTIVES AND OTHER COUNTRY REGULATION AS DESCRIBED IN GS-22-008.
- 11 THE PRODUCT IS NOT INTENDED TO BE EXPOSED TO A MANUFACTURING SOLDER PROCESS
- ⑫ PLATING OPTIONS:
MAY BE EITHER GOLD DR GXT PLATED AT MANUFACTURER'S OPTION.

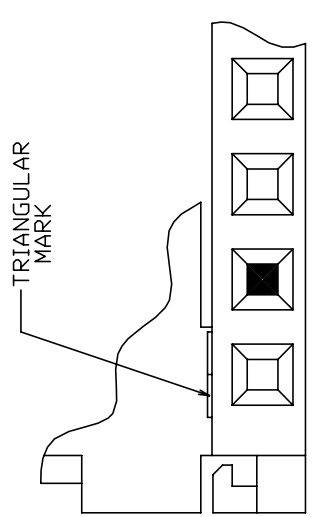


FIG A
NOTE 7

mat'l. code	surface	tolerance	projection	product family
AN	ISO 1302	ISO 406	ISO 1101	CLINCHER
date	angles	lineal	INCH/MM	title
	0°±2'	.0001/0.0013	scale 3:1	CLINCHER™ RECEPTACLE ASSEMBLY
sheet index	dr	appr	dwg no	sheet 2 of 7 size
1	T. BREWBAKER	T. HANNA	65801	A3
revision	chr	appr	Product	Customer Drawing
	J. MURPHY	T. HANNA		



PRODUCT NO. NOTE 9	NO. OF POSITIONS	DIM. L		DIM. M		DIM. C		DIM. C ENGLISH	DIM. C METRIC	DIM. C	TERMINATION NOTE 6	NOTES
		ENGLISH	METRIC	ENGLISH	METRIC	ENGLISH	METRIC					
65801-033	4	0.300	7.62	0.590	14.99	0.515	13.08				CONVENTIONAL	-
65801-034	5	0.400	10.16	0.690	17.53	0.615	15.62				CONVENTIONAL	-
65801-035	6	0.500	12.70	0.790	20.07	0.715	18.16				CONVENTIONAL	-
65801-036	7	0.600	15.24	0.890	22.61	0.815	20.70				CONVENTIONAL	-
65801-037	8	0.700	17.78	0.990	25.15	0.915	23.24				CONVENTIONAL	-
65801-038	9	0.800	20.32	1.090	27.69	1.015	25.78				CONVENTIONAL	-
65801-039	10	0.900	22.86	1.190	30.23	1.115	28.32				CONVENTIONAL	-
65801-040	11	1.000	25.40	1.290	32.77	1.215	30.86				CONVENTIONAL	-
65801-041	12	1.100	27.94	1.390	35.31	1.315	33.40				CONVENTIONAL	-
65801-042	13	1.200	30.48	1.490	37.85	1.415	35.94				CONVENTIONAL	-
65801-043	14	1.300	33.02	1.590	40.39	1.515	38.48				CONVENTIONAL	-
65801-044	15	1.400	35.56	1.690	42.93	1.615	41.02				CONVENTIONAL	-
65801-045	16	1.500	38.10	1.790	45.47	1.715	43.56				CONVENTIONAL	-
65801-046	17	1.600	40.64	1.890	48.01	1.815	46.10				CONVENTIONAL	-
65801-047	18	1.700	43.18	1.990	50.55	1.915	48.64				CONVENTIONAL	-
65801-048	19	1.800	45.72	2.090	53.09	2.015	51.18				CONVENTIONAL	-
65801-049	20	1.900	48.26	2.190	55.63	2.115	53.72				CONVENTIONAL	-
65801-050	21	2.000	50.80	2.290	58.17	2.215	56.26				CONVENTIONAL	-
65801-051	22	2.100	53.34	2.390	60.71	2.315	58.80				CONVENTIONAL	-
65801-052	23	2.200	55.88	2.490	63.25	2.415	61.34				CONVENTIONAL	-
65801-053	24	2.300	58.42	2.590	65.79	2.515	63.88				CONVENTIONAL	-
65801-054	25	2.400	60.96	2.690	68.33	2.615	66.42				CONVENTIONAL	-
65801-055	26	2.500	63.50	2.790	70.87	2.715	68.96				CONVENTIONAL	-
65801-056	27	2.600	66.04	2.890	73.41	2.815	71.50				CONVENTIONAL	-
65801-057	28	2.700	68.58	2.990	75.95	2.915	74.04				CONVENTIONAL	-
65801-058	29	2.800	71.12	3.090	78.49	3.015	76.58				CONVENTIONAL	-
65801-059	30	2.900	73.66	3.190	81.03	3.115	79.12				CONVENTIONAL	-
65801-060	31	3.000	76.20	3.290	83.57	3.215	81.66				CONVENTIONAL	-
65801-061	32	3.100	78.74	3.390	86.11	3.315	84.20				CONVENTIONAL	-
65801-062	3	0.200	5.08	0.490	12.45	0.415	10.54				CONVENTIONAL	-
65801-063	2	0.100	2.54	0.390	9.91	0.315	8.00				CONVENTIONAL	-
65801-064	34	3.300	83.82	3.590	91.19	3.515	89.28				CONVENTIONAL	-
65801-065	33	3.200	81.28	3.490	88.65	3.415	86.74				CONVENTIONAL	-
65801-066	34	3.300	83.82	3.590	91.19	3.515	89.28				CONVENTIONAL	-
65801-067	12	1.100	27.94	1.390	35.31	1.315	33.40				CONVENTIONAL	NOTE 5

mat'l. code		surface / tolerance		projection		product family	
tr	ec	ISO 1302	ISO 406 / ISO 1101	1st angle	CLINCHER	CLINCHER	
AN	date	angles	tolerances unless otherwise specified	INCH/MM	title		
		linea		scale 3:1	CLINCHER™ RECEPTACLE ASSEMBLY		
		0°±2'			dwg no sheet 4 of 7 size		
		dr	T. BREWBAKER	5/17/94	65801 A3		
		engr	T. HANNA	5/17/94	Product Customer Drawing		
		chr	J. MURPHY	5/17/94			
		appd	T. HANNA	5/17/94			
sheet index	revision						



PRODUCT NO. NOTE 9	NO. OF POSITIONS	DIM. L		DIM. M		DIM. C		DIM. C METRIC	DIM. C ENGLISH	DIM. M METRIC	DIM. M ENGLISH	DIM. C METRIC	DIM. C ENGLISH	PLATING CODE	TERMINATION NOTE 6	NOTES
		ENGLISH	METRIC	ENGLISH	METRIC	ENGLISH	METRIC									
65801-102	2	0.100	2.54	0.390	9.91	0.315	8.00	1	INK							
65801-103	3	0.200	5.08	0.490	12.45	0.415	10.54	1	INK							
65801-104	4	0.300	7.62	0.590	14.99	0.515	13.08	1	INK							
65801-105	5	0.400	10.16	0.690	17.53	0.615	15.62	1	INK							
65801-106	6	0.500	12.70	0.790	20.07	0.715	18.16	1	INK							
65801-107	7	0.600	15.24	0.890	22.61	0.815	20.70	1	INK							
65801-108	8	0.700	17.78	0.990	25.15	0.915	23.24	1	INK							
65801-109	9	0.800	20.32	1.090	27.69	1.015	25.78	1	INK							
65801-110	10	0.900	22.86	1.190	30.23	1.115	28.32	1	INK							
65801-111	11	1.000	25.40	1.290	32.77	1.215	30.86	1	INK							
65801-112	12	1.100	27.94	1.390	35.31	1.315	33.40	1	INK							
65801-113	13	1.200	30.48	1.490	37.85	1.415	35.94	1	INK							
65801-114	14	1.300	33.02	1.590	40.39	1.515	38.48	1	INK							
65801-115	15	1.400	35.56	1.690	42.93	1.615	41.02	1	INK							
65801-116	16	1.500	38.10	1.790	45.47	1.715	43.56	1	INK							
65801-117	17	1.600	40.64	1.890	48.01	1.815	46.10	1	INK							
65801-118	18	1.700	43.18	1.990	50.55	1.915	48.64	1	INK							
65801-119	19	1.800	45.72	2.090	53.09	2.015	51.18	1	INK							
65801-120	20	1.900	48.26	2.190	55.63	2.115	53.72	1	INK							
65801-121	21	2.000	50.80	2.290	58.17	2.215	56.26	1	INK							
65801-122	22	2.100	53.34	2.390	60.71	2.315	58.80	1	INK							
65801-123	23	2.200	55.88	2.490	63.25	2.415	61.34	1	INK							
65801-124	24	2.300	58.42	2.590	65.79	2.515	63.88	1	INK							
65801-125	25	2.400	60.96	2.690	68.33	2.615	66.42	1	INK							
65801-126	26	2.500	63.50	2.790	70.87	2.715	68.96	1	INK							
65801-127	27	2.600	66.04	2.890	73.41	2.815	71.50	1	INK							
65801-128	28	2.700	68.58	2.990	75.95	2.915	74.04	1	INK							
65801-129	29	2.800	71.12	3.090	78.49	3.015	76.58	1	INK							
65801-130	30	2.900	73.66	3.190	81.03	3.115	79.12	1	INK							
65801-131	31	3.000	76.20	3.290	83.57	3.215	81.66	1	INK							
65801-132	32	3.100	78.74	3.390	86.11	3.315	84.20	1	INK							

mat'l. code	surface	tolerance	projection	product family
AN	ISO 1302	ISO 406 ISO 1101		CLINCHER
tr/tecn nbadr	angles	linea		title
date	0°±2'	XXXL002/00000061	INCH/MM	CLINCHER™ RECEPTACLE ASSEMBLY
	dr	XXXL002/00000061	scale 3:1	dwg no
	engr	T. HANNA		sheet 5 of 7 size
	chr	J. MURPHY		65801
	appd	T. HANNA		Product Customer Drawing
sheet index	revision			
	sheet			



PRODUCT NO. NOTE 9	NO. OF POSITIONS	DIM. L		DIM. M		DIM. C		DIM. C METRIC	PLATING CODE	TERMINATION NOTE 6	NOTES
		ENGLISH	METRIC	ENGLISH	METRIC	ENGLISH	METRIC				
65801-133	4	0.300	7.62	0.590	14.99	0.515	13.08	2	2	INK	-
65801-134	5	0.400	10.16	0.690	17.53	0.615	15.62	2	2	INK	-
65801-135	6	0.500	12.70	0.790	20.07	0.715	18.16	2	2	INK	-
65801-136	7	0.600	15.24	0.890	22.61	0.815	20.70	2	2	INK	-
65801-137	8	0.700	17.78	0.990	25.15	0.915	23.24	2	2	INK	-
65801-138	9	0.800	20.32	1.090	27.69	1.015	25.78	2	2	INK	-
65801-139	10	0.900	22.86	1.190	30.23	1.115	28.32	2	2	INK	-
65801-140	11	1.000	25.40	1.290	32.77	1.215	30.86	2	2	INK	-
65801-141	12	1.100	27.94	1.390	35.31	1.315	33.40	2	2	INK	-
65801-142	13	1.200	30.48	1.490	37.85	1.415	35.94	2	2	INK	-
65801-143	14	1.300	33.02	1.590	40.39	1.515	38.48	2	2	INK	-
65801-144	15	1.400	35.56	1.690	42.93	1.615	41.02	2	2	INK	-
65801-145	16	1.500	38.10	1.790	45.47	1.715	43.56	2	2	INK	-
65801-146	17	1.600	40.64	1.890	48.01	1.815	46.10	2	2	INK	-
65801-147	18	1.700	43.18	1.990	50.55	1.915	48.64	2	2	INK	-
65801-148	19	1.800	45.72	2.090	53.09	2.015	51.18	2	2	INK	-
65801-149	20	1.900	48.26	2.190	55.63	2.115	53.72	2	2	INK	-
65801-150	21	2.000	50.80	2.290	58.17	2.215	56.26	2	2	INK	-
65801-151	22	2.100	53.34	2.390	60.71	2.315	58.80	2	2	INK	-
65801-152	23	2.200	55.88	2.490	63.25	2.415	61.34	2	2	INK	-
65801-153	24	2.300	58.42	2.590	65.79	2.515	63.88	2	2	INK	-
65801-154	25	2.400	60.96	2.690	68.33	2.615	66.42	2	2	INK	-
65801-155	26	2.500	63.50	2.790	70.87	2.715	68.96	2	2	INK	-
65801-156	27	2.600	66.04	2.890	73.41	2.815	71.50	2	2	INK	-
65801-157	28	2.700	68.58	2.990	75.95	2.915	74.04	2	2	INK	-
65801-158	29	2.800	71.12	3.090	78.49	3.015	76.58	2	2	INK	-
65801-159	30	2.900	73.66	3.190	81.03	3.115	79.12	2	2	INK	-
65801-160	31	3.000	76.20	3.290	83.57	3.215	81.66	2	2	INK	-
65801-161	32	3.100	78.74	3.390	86.11	3.315	84.20	2	2	INK	-
65801-162	3	0.200	5.08	0.490	12.45	0.415	10.54	2	2	INK	-
65801-163	2	0.100	2.54	0.390	9.91	0.315	8.00	2	2	INK	-
65801-164				U N A \$ I G N E D							
65801-165				U N A \$ I G N E D							
65801-166	34	3.300	83.82	3.590	91.19	3.515	89.28	2	2	INK	-
65801-167	12	1.100	27.94	1.390	35.31	1.315	33.40	2	2	INK	NOTE 5

mat'l. code	surface	tolerance	projection	product family
AN	ISO 1302	ISO 406		CLINCHER
	date	tolerances unless otherwise specified		title
		angles	INCH/MM	CLINCHER™ RECEPTACLE ASSEMBLY
		0°±2'	scale 3:1	dwg no
		dr T. BREWBAKER		sheet 6 of 7
		engr T. HANNA		65801
		chr J. MURPHY		A3
		appd T. HANNA		Product Customer Drawing
sheet index	revision			

PRODUCT NO. NOTE 9	NO. OF POSITIONS		DIM. L		DIM. M		DIM. C		DIM. C		PLATING		TERMINATION		CLOSED POS.		TERMINAL ABSENT	
	ENGLISH	METRIC	ENGLISH	METRIC	ENGLISH	METRIC	ENGLISH	METRIC	ENGLISH	METRIC	CODE	NOTE 6	NOTE 7	NOTE 7	NOTE 7	NOTE 7	NOTE 7	NOTE 7
65801-201	1.500	38.10	1.790	45.47	1.715	43.56	1	CONVENTIONAL	4	4	4	4	4	4	4	4	4	4.5.6
65801-202	0.400	10.16	0.690	17.53	0.615	15.62	2	CONVENTIONAL	3	3	3	3	3	3	3	3	3	3
65801-203	0.600	15.24	0.890	22.61	0.815	20.70	2	CONVENTIONAL	6	6	6	6	6	6	6	6	6	1.2.6.7
65801-204	0.900	22.86	1.190	30.23	1.115	28.32	1	CONVENTIONAL	4	4	4	4	4	4	4	4	4	4
65801-205	0.500	12.70	0.790	20.07	0.715	18.16	1	CONVENTIONAL	5	5	5	5	5	5	5	5	5	5
65801-206	0.400	10.16	0.690	17.53	0.615	15.62	1	CONVENTIONAL	4	4	4	4	4	4	4	4	4	4
65801-207	0.600	15.24	0.890	22.61	0.815	20.70	2	CONVENTIONAL	N/A	N/A	N/A	N/A	N/A	N/A	N/A	N/A	N/A	1.2.6.7
65801-208	0.300	7.62	0.590	14.99	0.515	13.08	1	CONVENTIONAL	N/A	N/A	N/A	N/A	N/A	N/A	N/A	N/A	N/A	2.3
65801-209	0.200	5.08	0.490	12.45	0.415	10.54	1	CONVENTIONAL	N/A	N/A	N/A	N/A	N/A	N/A	N/A	N/A	N/A	2

mat'l. code		surface		tolerance		projection		product family	
AN	ISD 1302	ISD 406	ISD 1101	ISD 1302	ISD 406	ISD 1101	ISD 1302	ISD 406	CLINCHER
date	tolerances unless otherwise specified			title		CLINCHER™ RECEPTACLE ASSEMBLY			
	angles	linea		INCH/MM		scale 3:1			
	0°±2°	.001±.002/.0005±.0013		FQJ		sheet 7 of 7 size			
	dr	T. BREWBAKER		5/17/94		dwg no 65801			
	engr	T. HANNA		5/17/94		Product Customer Drawing			
	chr	J. MURPHY		5/17/94		type			
	appd	T. HANNA		5/17/94		Drawing			
sheet index	revision								
	sheet								

4 PDS: Rev :AN

STATUS: Released

Printed: Mar 07, 2012

1 2 3 4 5 6

B C D

D

3 2 1