

MICRO SWITCH

FREERPORT ILLINOIS, U.S.A
A DIVISION OF HONEYWELL
FED. MFG. CODE 91929

SWITCH - BASIC

CATALOG LISTING
BZ-RQ66

BZ-RQ66

M

DRAWING NUMBER

ISSUE

6

REPLACES

RELEASE NO. CO-8520

CHECK

CHECK

CHECK

CHECK

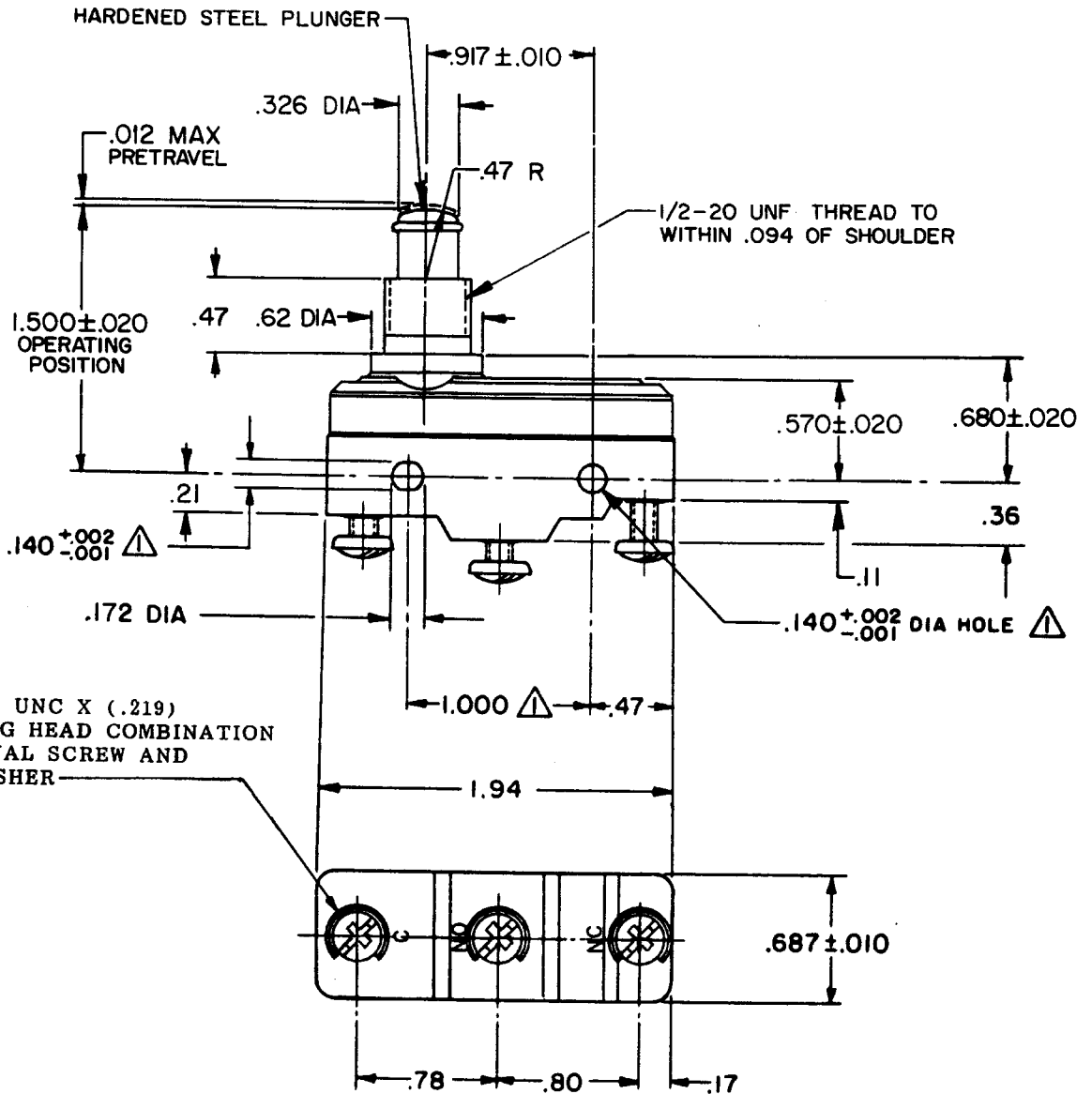
CHECK

CHECK

CHECK

CHECK

CHECK



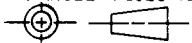
NOTE -
▲ - MOUNTING HOLES WILL ACCEPT PINS OR SCREWS OF .139 MAX DIA ON 1.000 ± .002 CENTERS

REVISIONS

A	NEW DWG	CO34158
K	P	K
26	SEP	74
B	CO38099	
K	P	K
5	JUN	77
C	CO-73287-J	
J	A	L
22	NOV	93
D	CO-77592	
DAW		
15	AUG	94

THIS DRAWING COVERS A PROPRIETARY ITEM AND IS THE PROPERTY OF MICRO SWITCH, A DIVISION OF HONEYWELL. THIS DRAWING IS NOT TO BE COPIED OR USED WITHOUT THE APPROVAL OF MICRO SWITCH.

THIRD ANGLE PROJECTION



CHARACTERISTICS	
OPERATING FORCE	6-9 1/2 OZ
RELEASE FORCE	4 OZ MIN
DIFFERENTIAL TRAVEL	.0002-.0005
OVERTRAVEL	.219 MIN

ELECTRICAL DATA	
CONTACT ARRANGEMENT S P D T	
UL LISTED - FILE E12252 CODE L103 15A-125, 250 OR 480 VAC 1/8HP-125 VAC; 1/4HP-250 VAC	

SCALE FULL			
DO NOT SCALE PRINT			
TOLERANCES			
APPLY TO DESIGN UNITS. CONVERSIONS ARE ONLY FOR REFERENCE. UNLESS NOTED, TOLERANCES ARE ±			
DIM.	TOL.	DIM.	TOL.
mm	mm/in	in	mm/in
NO PLACES	X	1/04	X.X
ONE PLACE	X.X	0.41/018	X.XX
TWO PLACES	X.XX	0.15/.008	X.XXX
THREE PLACES	X.XXX		X.XXXX
ANGLES			
SI METRIC		US CUSTOMARY	
DESIGN UNITS			

WEIGHT .090 LB

FO-52848-A

DRAWN

K P K126 SEP 74

4 OCT 74

CHECK

CHECK

CHECK

CHECK

CHECK

CHECK

CHECK

CHECK

CHECK