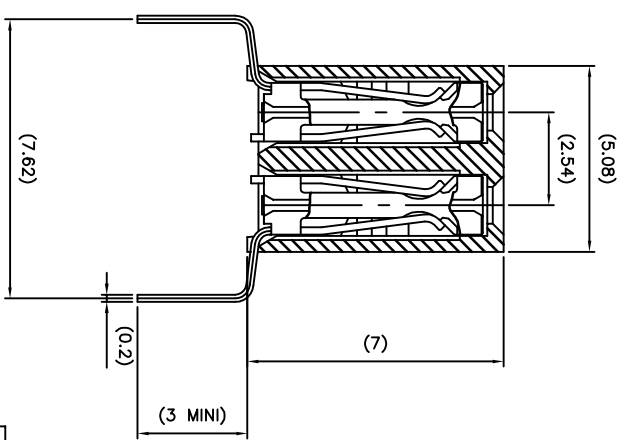
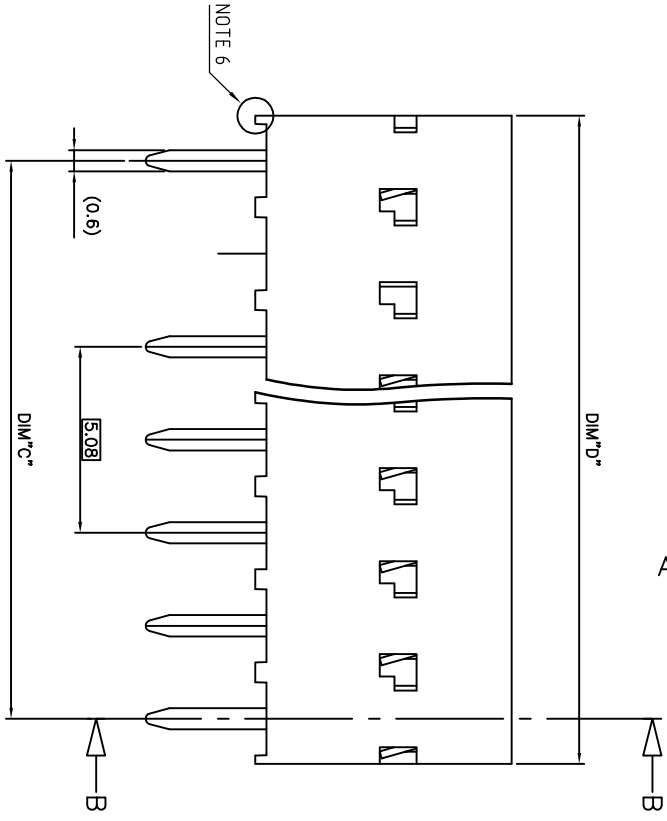
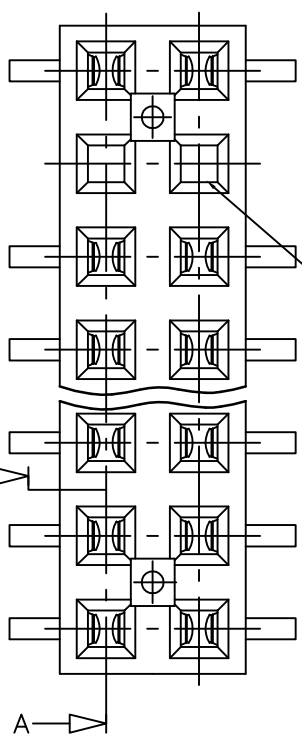


PRODUCT NB	DIM"C" & DIM"D"
95264-YYY(H)(LF)	SEE SHEET 2/2

WHEN NEEDED, SUFFIX LETTER "LF" INDICATES THE PRODUCT IS ROHS COMPATIBLE. SEE NOTE 5



NOTES:

- 1 - MATERIAL HOUSING: THERMOPLASTIC POLYESTER, 30% GLASS FILLED, COLOUR BLUE. FLAME RETARDANT PER UL-94 CATEGORY VO.
- 2 - MATERIAL TERMINAL: PHOSPHOR BRONZE EXTRA HARD.
- 3 - MATERIAL HOUSING VERSION HIGH TEMPERATURE: PCT 30% GLASS FILLED, COLOUR GREY. FLAME RETARDANT PER UL-94 CATEGORY VO.
- 4 - THE DASH "H" AT THE END OF THE P/N TO INDICATE A HIGH TEMPERATURE HOUSING.
- 5 - ROHS COMPATIBLE PRODUCT SPECIFICATIONS
- 6 - PLATING:
 - "LF" MEANS THE PRODUCT IS LEAD-FREE, 2µm MINIMUM MATTE TIN OVER 1.27µm MINIMUM NICKEL UNDERPLATE.
- 7 - MANUFACTURING PROCESS COMPATIBILITY
 - THE HOUSING WILL WITHSTAND EXPOSURE TO 260°C ±5°C SOLDER BATH TEMPERATURE FOR 5 SECONDS IN A WAVE SOLDER APPLICATION WITH A 1.6mm MIN THICK CIRCUIT BOARD.
- 8 - LABELING:
 - MEETS PACKAGING SPECS AS PER GS-14-920
- 9 - LEGAL STATEMENT: SEE GS-22-008
- 10 - END STAND-OFFS FOR 2x2 UP TO 2x6 POS NO END STAND-OFFS FOR 2x6 UP TO 2x50 POS

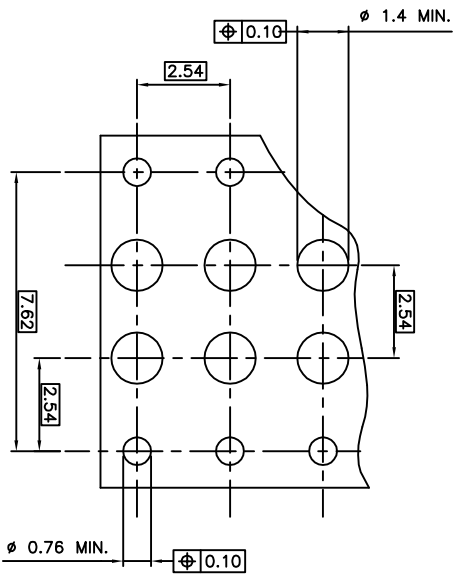
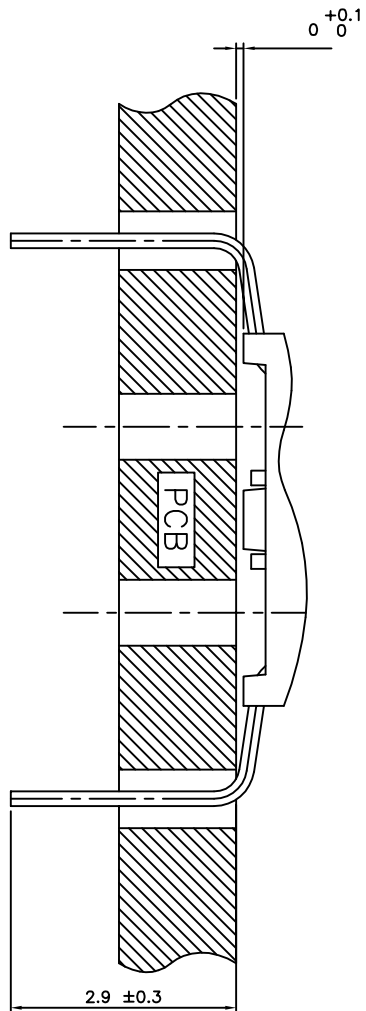
SECTION A-A

(SEE NOTE 4)

SECTION B-B

mat'l. code	SEE NOTES	surface	tolerance	projection	product family						
Utr	ecn no	dr	date	ISO 1942	ISO 416	ISO 1942	ISO 416	ISO 1942	ISO 416	ISO 1942	ISO 416
H	F80638	VM0	98.10.14	angle	±0.3	mm	scale 10:1	FCI	SPREADED LEGS	300 SELECT. LOADED	sheet 1 of 2 size A2
J	F20161	DLE	02.02.25	lineart							
K	F04-0347	DLE	04.11.15	±Z							
L	F08-0137	DLE	06.02.27	dr	O. MATHERON	98.06.07					
M	F08-0204	DLE	06.06.28	enfr	JM.PHAMMANI	98.06.07					
N	F08-0323	DLE	06.11.21	chr	P. NEZZI	98.06.07					
P	F11-0043	COO	11.02.22	pprd	JMP	98.06.07					
sheet	revision	P	H								
index	sheet	1	2								

PRODUCT N°	NB of POS.	DIM"C"	DIM"D"	CONTACT PLACED IN CAVITY (SEE VIEW "A")																			
				1	2	3	4	5	6	7	8	9	10	11	12	13	14	15	16	17	18	19	20
95264-Y01(H)(LF)	2x10	22.86	25.32	X	X	X	X	X	X	X	X	X	X	X	X	X	X	X	X	X	X	X	
95264-Y02(H)(LF)	2x15	35.56	38.02	X	X	X	X	X	X	X	X	X	X	X	X	X	X	X	X	X	X	X	
95264-Y03(H)(LF)	2x11	35.56	38.02	X	X	X	X	X	X	X	X	X	X	X	X	X	X	X	X	X	X	X	
95264-Y04(H)(LF)	2x10	22.86	25.32	X	X	X	X	X	X	X	X	X	X	X	X	X	X	X	X	X	X	X	
95264-Y05(H)(LF)	2x4	7.62	10.08	X	X	X	X	X	X	X	X	X	X	X	X	X	X	X	X	X	X	X	
95264-Y06(H)(LF)	2x5	10.16	12.62	X	X	X	X	X	X	X	X	X	X	X	X	X	X	X	X	X	X	X	
95264-Y07(H)(LF)	2x3	5.08	7.54	X	X	X	X	X	X	X	X	X	X	X	X	X	X	X	X	X	X	X	
95264-Y08(H)(LF)	2x7	15.24	17.7	X	X	X	X	X	X	X	X	X	X	X	X	X	X	X	X	X	X	X	
95264-Y09(H)(LF)	2x14	33.02	35.48	X	X	X	X	X	X	X	X	X	X	X	X	X	X	X	X	X	X	X	
95264-Y10(H)(LF)	2x20	48.26	50.72	X	X	X	X	X	X	X	X	X	X	X	X	X	X	X	X	X	X	X	



95264-6XX(H)	2µm Au MIN. OVER 1.3µm Ni MIN.	SnPb OVER Ni	95264-6XX(H)LF	2µm Au MIN. OVER 1.3µm Ni MIN.	Sn OVER Ni
95264-8XX(H)	0.4µm Au MIN. OVER 1.3µm Ni MIN.	SnPb OVER Ni	95264-8XX(H)LF	0.4µm Au MIN. OVER 1.3µm Ni MIN.	Sn OVER Ni
95264-4XX(H)	5µm SnPb MIN. OVER 0.1µm Ni MIN.	SnPb OVER Ni	95264-4XX(H)LF	5µm Sn MIN. OVER 1.27µm Ni MIN.	Sn OVER Ni
95264-3XX(H)	0.75µm Au MIN. OVER 1.3µm Ni MIN.	SnPb OVER Ni	95264-3XX(H)LF	0.75µm Au MIN. OVER 1.3µm Ni MIN.	Sn OVER Ni
PLATING CODE		CONTACT AREA	PLATING CODE		SOLDER TAIL
PLATING EXPLANATION					

CUSTOMER COPY FOR REFERENCE ONLY					
mat'l. code	SEE NOTES	surface finish	tolerance	projection	product family
LF	eqn no	dr	date	ISO 1912	ISO 418
H	DRG-0204/DE	06.06.28	06.06.28	mm	mm
C	F20103	JMP	97.01.10	4:2	P-NZZI
D	F20029	PNZ	97.09.25	4:2	P-NZZI
E	F20038	VMQ	98.10.14	ENR	JMP/PM/AM
F	F20161	DE	02.02.25	ENR	P-NZZI
G	FDW-0347/DE	OK	11.15	ENR	JMP
sheet	revision	sheet	sheet	sheet	sheet
index	index	index	index	index	index
Title			product family		
SPREADED LEGS			DX VCC DR		
300 SELECT. LOADED			sheet 2 of - size		
95264			95264		
CUSTOMER Drawing			CUSTOMER Drawing		