

BS, C , 201632, 003	D	GEN. ST.	01	02	03	04	05	06	07	08	0D	50	60	70	80	90														
		INT. ST.	10	11	12	13	14	18	20	31	32	33	34	38	39	40	42	43	44	45	46	48	56	70	72	73	76	81	83	84
	REV.	B	2004-01-28	104-0005																										
		C	2005-10-27	105-0196																										
		D	2006-07-04	106-0096																										

DESCRIPTION

BY

R.M.

PERFORMANCE CHARACTERISTICS

CURRENT RATING : 1.5 A AT 20°C (FULLY LOADED)

RATED VOLTAGE : 500 V AC (FULLY LOADED)

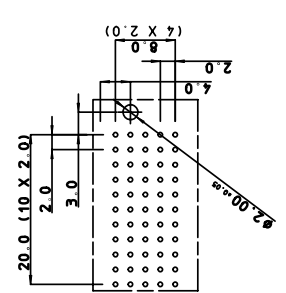
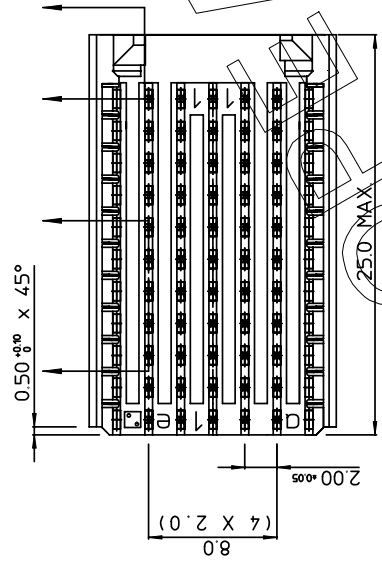
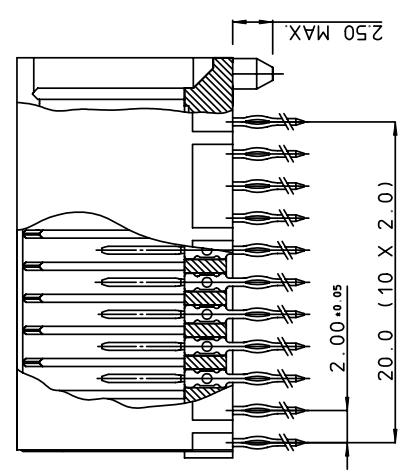
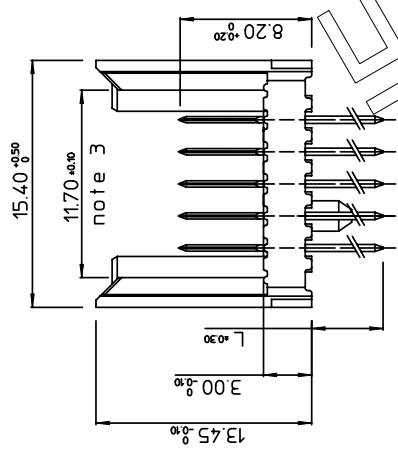
OPERATING TEMPERATURE : -55°C TO 125°C

CONTACT RESISTANCE : 20 mΩ MAX

INSERTION FORCE : 0.75 N MAX / CONT

EXTRACTION FORCE : 0.15 N MIN / CONT

INSULATION RESISTANCE : 10¹⁰ MΩ MIN



CAT. NR.	L +0.3	DESCRIPTION
HM2P09PD5110	3.7	SHORT PRESS-FIT
HM2P09PC5110	4.5	SHORT PRESS-FIT
HM2P09PK5110	13	REAR PLUG-UP: LEVEL 1
HM2P09PM5110	14.5	REAR PLUG-UP: LEVEL 2
HM2P09PN5110	16	REAR PLUG-UP: LEVEL 3
HM2P09PT5110	13	WIRE WRAP

NOTES

1. *HM2P09P#5110-5.3*

PERFORMANCE LEVEL INDICATOR (REFER DWG NO. BS.C , 201844, 003)

LEAD FREE INDICATOR : LF=LEAD FREE (DIGIT 15&16)

- 2. THIS PRODUCT IS CSA APPROVED.
- THIS PRODUCT IS UL RECOGNIZED.
- 3. MEASURED AT THE BOTTOM.
- 4. FOR RECOMMENDED PTH DIMENSIONS REFER DRAWING : BS.A , 201572, 001
- 5. THE PRODUCT (LF) MEETS EUROPEAN UNION DIRECTIVES AND OTHER COUNTRY REGULATIONS AS DESCRIBED IN GS-22-008

MALE SIGNAL STRAIGHT PRESS-FIT-TO-BOARD CONNECTOR		EXTENSION MODULE (WIDE BODY)	
1DEC ±0.2	APPR.	DATE	SIGN.
2DEC ±0.1	DRAFT	1993-06-08	W. Poniš
ANGLES ±1°	CHECKED		
WE RESERVE THE RIGHT TO CHANGE SPECIFICATIONS WITHOUT PRIOR NOTICE	PROD. MGR.		
	PR. ENG. MGR.		
	PR. MGT. MGR.		
ALL DIMENSIONS IN MM			
REFERENCES			
MILLIPACS 2 / TYPE C / NO SHIELDING			
CAT. No. HM2P09P#5110-----			
SCALE 3 / 1			
www.fciconnect.com			
BS, C , 201632, 003			
D			

THIS IS THE EXCLUSIVE PROPERTY. IT IS MADE TO BE CONTROLLED. REPRODUCTION AND DISSEMINATION TO ANY PART OF THE COMPANY OR TO ANY OTHER PARTY WITHOUT OUR WRITTEN CONSENT. AND HAS TO BE RETURNED TO US IN CASE OF NO USAGE

DIT IS HET EIGENDELIJKHEID VAN DE FABRICANT. HET MOET GECONTROLEERD WORDEN EN DE REPRODUCTIE EN VERDELING TOEGestaan WORDEN. Het moet teruggegeven worden als het niet gebruikt is.

PDM: Rev:D

STATUS: Released

CUSTOMER DRAWING: 006

Revision 2