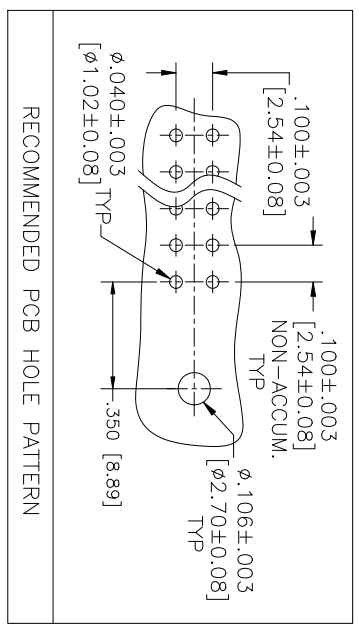
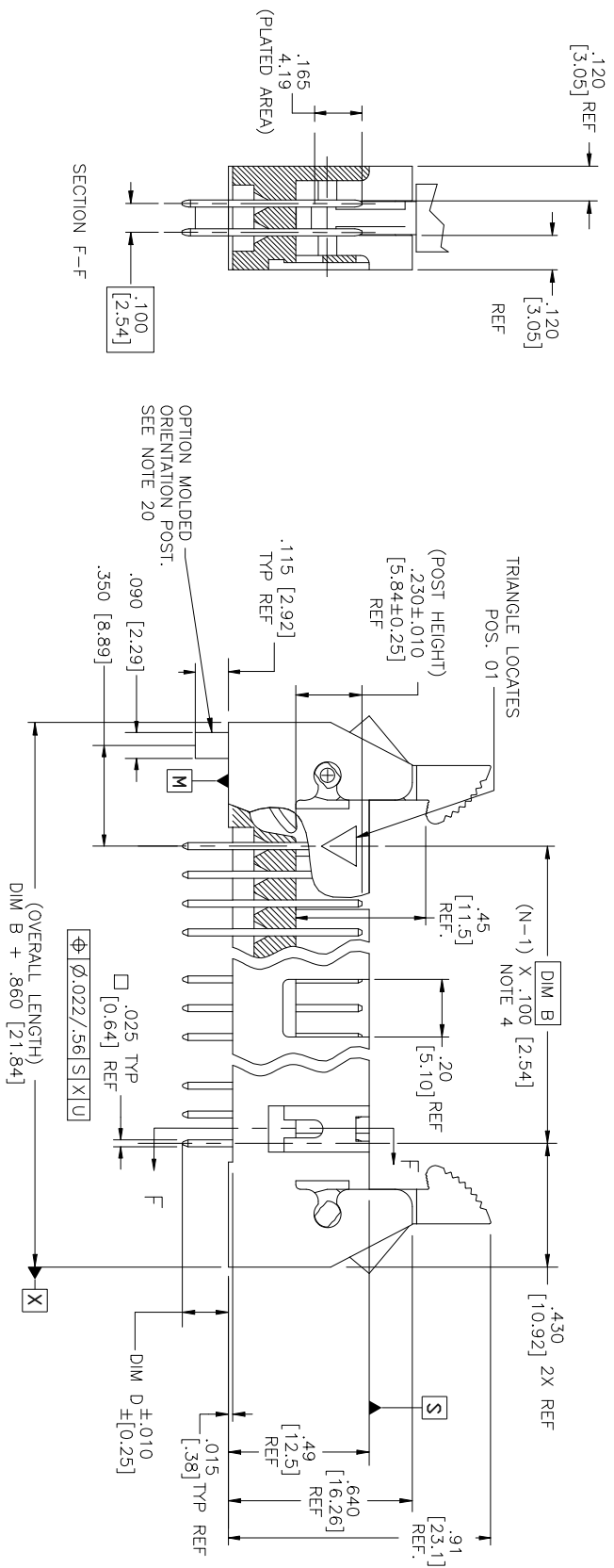
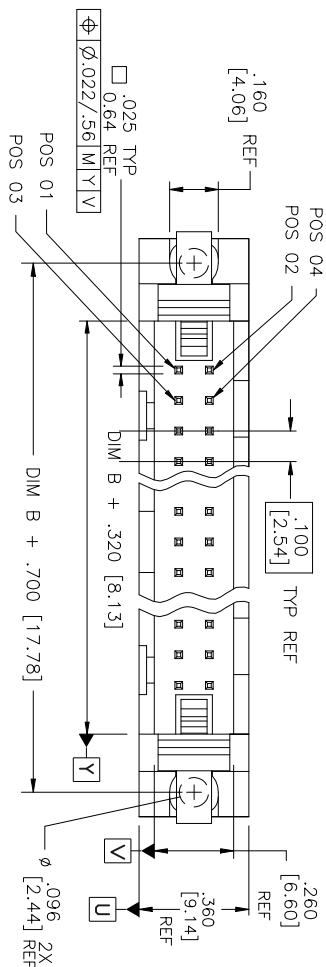


PRODUCT NUMBER
SEE TABLE



Form: A3-2016-02-24

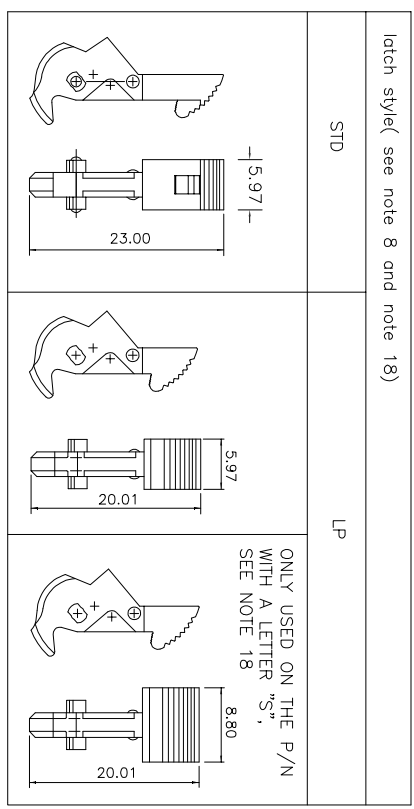
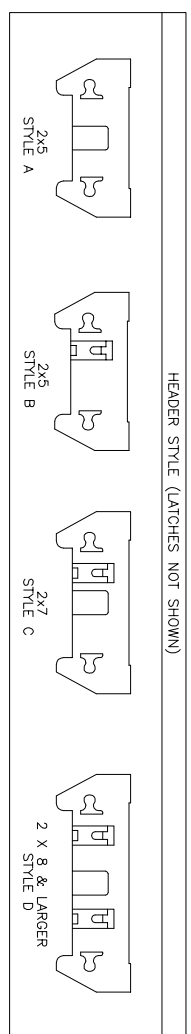
PDS: Ref :86

STATUS: Released

Printed: 4/11/23, 2017

mat'l code	surfact	tolerance	projection	product family
(tr) ecn no	dr	date	ISO 1302	QUICKIE
BA N08-0073	9999	4/28/08	ISO 1106	
BB N09-0007	R B	2009/01/12	ISO 1101	
BC EIX-N-0299	J Z	2012-07-04	0.125°	
BD EIX-N-1354	DCS	2012-11-02	dr	M. CORNUMAN
BE EIX-N-1797	TM	2014-06-17	enfr	M. SMYK
BG EIX-N-2432	M Z	2016-06-17	chr	M. SMYK
Sheet	revision	BG	BG	BG
Index	Sheet	1	2	3
		4	5	6
		7	8	9
		10	11	12
		13	14	15
		16	17	18
		19	20	21
		22	23	24
		25	26	27
		28	29	30
		31	32	33
		34	35	36
		37	38	39
		40	41	42
		43	44	45
		46	47	48
		49	50	51
		52	53	54
		55	56	57
		58	59	60
		61	62	63
		64	65	66
		67	68	69
		70	71	72
		73	74	75
		76	77	78
		79	80	81
		82	83	84
		85	86	87
		88	89	90
		91	92	93
		94	95	96
		97	98	99
		100	101	102
		103	104	105
		106	107	108
		109	110	111
		112	113	114
		115	116	117
		118	119	120
		121	122	123
		124	125	126
		127	128	129
		130	131	132
		133	134	135
		136	137	138
		139	140	141
		142	143	144
		145	146	147
		148	149	150
		151	152	153
		154	155	156
		157	158	159
		160	161	162
		163	164	165
		166	167	168
		169	170	171
		172	173	174
		175	176	177
		178	179	180
		181	182	183
		184	185	186
		187	188	189
		190	191	192
		193	194	195
		196	197	198
		199	200	201
		202	203	204
		205	206	207
		208	209	210
		211	212	213
		214	215	216
		217	218	219
		220	221	222
		223	224	225
		226	227	228
		229	230	231
		232	233	234
		235	236	237
		238	239	240
		241	242	243
		244	245	246
		247	248	249
		250	251	252
		253	254	255
		256	257	258
		259	260	261
		262	263	264
		265	266	267
		268	269	270
		271	272	273
		274	275	276
		277	278	279
		280	281	282
		283	284	285
		286	287	288
		289	290	291
		292	293	294
		295	296	297
		298	299	300
		301	302	303
		304	305	306
		307	308	309
		310	311	312
		313	314	315
		316	317	318
		319	320	321
		322	323	324
		325	326	327
		328	329	330
		331	332	333
		334	335	336
		337	338	339
		340	341	342
		343	344	345
		346	347	348
		349	350	351
		352	353	354
		355	356	357
		358	359	360
		361	362	363
		364	365	366
		367	368	369
		370	371	372
		373	374	375
		376	377	378
		379	380	381
		382	383	384
		385	386	387
		388	389	390
		391	392	393
		394	395	396
		397	398	399
		400	401	402
		403	404	405
		406	407	408
		409	410	411
		412	413	414
		415	416	417
		418	419	420
		421	422	423
		424	425	426
		427	428	429
		430	431	432
		433	434	435
		436	437	438
		439	440	441
		442	443	444
		445	446	447
		448	449	450
		451	452	453
		454	455	456
		457	458	459
		460	461	462
		463	464	465
		466	467	468
		469	470	471
		472	473	474
		475	476	477
		478	479	480
		481	482	483
		484	485	486
		487	488	489
		490	491	492
		493	494	495
		496	497	498
		499	500	501
		502	503	504
		505	506	507
		508	509	510
		511	512	513
		514	515	516
		517	518	519
		520	521	522
		523	524	525
		526	527	528
		529	530	531
		532	533	534
		535	536	537
		538	539	540
		541	542	543
		544	545	546
		547	548	549
		550	551	552
		553	554	555
		556	557	558
		559	560	561
		562	563	564
		565	566	567
		568	569	570
		571	572	573
		574	575	576
		577	578	579
		580	581	582
		583	584	585
		586	587	588
		589	590	591
		592	593	594
		595	596	597
		598	599	600

- NOTES:
1. HOUSING MAT'L: HIGH TEMPERATURE THERMOPLASTIC. UL94V-0. COLOR : BLACK
 2. PIN MATERIAL: PHOSPHOR-BRONZE
 3. 3 LBS/1.36 KG MIN. RETENTION.
 4. TO DETERMINE DIMENSION:
N = NUMBER OF POSITIONS.
EXAMPLE: 10 POS., (N-1) x .100[2.54]=.900[22.87]
 5. RETENTIVE LEG:
RETENTION FEATURE AVAILABLE ON CONNECTORS WITH .105/2.67, .120/3.05 OR .150/3.81 TAIL LENGTH. RETENTION P/N INCLUDES THE LETTER "R"
AFTER THE EXISTING P/N.
EXAMPLE : 65863-XXX FOR EXISTING P/N
65863-XXXX FOR RETENTION P/N
RETENTION FEATURE LOCATION IS MANUFACTURERS OPTION.
SILB/2.3KG MAX INSERTION FORCE AND .25LB./1KG MIN RETENTION FORCE PER RETENTIVE PIN USING .062/1.57 THICK CIRCUIT BOARD AND RECOMMENDED HOLE PATTERN. RETENTIVE LOCATION AT THE DISCRETION OF THE MANUFACTURER. OMIT FROM PRODUCT NUMBER IF THIS FEATURE IS NOT APPLICABLE.
 6. 1" MAX DRAFT PERMISSIBLE ON ALL SURFACES UNLESS OTHERWISE SPECIFIED.
 7. PLATING ON LEAD-IN PORTION OF PIN IS MANUFACTURING OPTION.
 8. L.P. LATCHES TO BE USED WITH FEMALE CONNECTOR WITHOUT STRAIN RELIEF, STANDARD LATCHES TO BE USED WITH FEMALE CONNECTOR WITH STRAIN RELIEF.
 9. RECOMMENDED MOUNTING SCREW SIZE : #2-56 FILLISTER HEAD MACHINE SCREW, 1/4" LONG FOR 1/16" AND 3/32" BOARD, 5/16" LONG FOR 1/8" BOARD.
 10. DASH -7XX IS POLARIZED (PIN MISSING).
 11. UNDERPLATING: 50µ"/1.27µm Ni:
 12. ADD "LF" SUFFIX AT THE END OF PART NUMBER FOR LEAD FREE OPTION.
 13. THIS PRODUCT MEETS EUROPEAN UNION DIRECTIVES AND OTHER COUNTRY REGULATION AS DESCRIBED IN GS-22-008.
 14. FOR POLARIZATION, SPECIFY POSITION NUMBER (i.e., 03= PIN 3) TO OMIT PIN. OMIT FROM PRODUCT NUMBER IF THIS FEATURE IS NOT APPLICABLE.
 15. THE HOUSING WILL WITHSTAND EXPOSURE TO 260° PEAK TEMPERATURE FOR 15 SECONDS IN A WAVE SOLDER APPLICATION WITH A 1.5mm MINIMUM THICK CIRCUIT BOARD. SEE APPLICATION NOTES/PROCEDURES IF THEY ARE AVAILABLE.
 16. THIS PRODUCT HAS 100% TIN PLATING IN THE INTERFACE AND HAS NOT BEEN TESTED FOR WHISKER GROWTH IN ALL INTERCONNECT ENVIRONMENTS."
 17. PLATING OPTIONS:
PERFORMANCE PLATING WILL BE EITHER GOLD OR GXT ON CONTACT OR TAIL, OPTIONALLY TIN ON TAIL.
 18. THE PART NUMBER IN THE DASH NUMBER WITH A LETTER "S" WILL HAVE A SPECIAL SEA HORSE USED.
 19. LEAD FREE PLATING: 100µ"~160µ"/2.54µ~4.06µ PURE Sn.
 20. 65863-XXXX, P-DESIGNATE ORIENTATION POST.(SEE PAGE 23)
 21. 65863-XXXX, F-PLATING FOUR SIDES ON CONTACT AREA.(SEE PAGE 23)
 22. 65863-XXXXP, FOR THIS TYPE PART NUMBER, THE PACKAGE MATERIAL IS TRAY(10139678-02-001) .



mat'l code		surface		tolerance		projection		product family	
ltr	ecn no	dr	date	ISO 1302	ISH 101	MM	MM	QUICKIE	QUICKIE
BC				tolerances unless otherwise specified	XXXX/XXXX	XXXX/XXXX	XXXX/XXXX	XXXX/XXXX	XXXX/XXXX
				angles	linear	MM	MM	XXXX/XXXX	XXXX/XXXX
				0±2°	XXXX/XXXX	XXXX/XXXX	XXXX/XXXX	XXXX/XXXX	XXXX/XXXX
				dr	M. CORNMANN	8/21/90	8/21/90	8/21/90	8/21/90
				engr	M. SMYK	8/21/90	8/21/90	8/21/90	8/21/90
				chr	M. SMYK	8/21/90	8/21/90	8/21/90	8/21/90
				pppd	M. SMYK	8/21/90	8/21/90	8/21/90	8/21/90
sheet	revision								
index	sheet								
title		drawing no		sheet 2 of 23		size		type	
HEADER, QUICKIE SEA-HORSE, VERTICAL		65863		2 of 23		A3		Product Customer Drawing	



PRODUCT NO NOTE 12.13	SIZE	LATCH NOTE 8	DIM B	DIM D	TERMINAL PLATING	STYLE
65863-001	2x5	NO	.400/10,160	.105/ 2.67	30u"/0.76u MIN (NOTE 17) OVER 50u"/1.27u NI	A
-002	↑	↑	↑	.105/ 2.67	120u"~200u"/3.04um~5.08umTIN/LEAD	NOTE 16.19
-003	↑	↑	↑	.150/ 3.81	30u"/0.76u MIN (NOTE 17) OVER 50u"/1.27u NI	NOTE 16.19
-004	↑	↑	↑	.150/ 3.81	120u"~200u"/3.04um~5.08umTIN/LEAD	NOTE 16.19
-005	↑	↑	↑	.675/17.15	30u"/0.76u MIN (NOTE 17) OVER 50u"/1.27u NI	NOTE 16.19
-006	2x5	↑	.400/10,160	.675/17.15	120u"~200u"/3.04um~5.08umTIN/LEAD	A
-007	2x7	↑	.600/15,240	.105/ 2.67	30u"/0.76u MIN (NOTE 17) OVER 50u"/1.27u NI	C
-008	↑	↑	↑	.105/ 2.67	120u"~200u"/3.04um~5.08umTIN/LEAD	NOTE 16.19
-009	↑	↑	↑	.150/ 3.81	30u"/0.76u MIN (NOTE 17) OVER 50u"/1.27u NI	NOTE 16.19
-010	↑	↑	↑	.150/ 3.81	120u"~200u"/3.04um~5.08umTIN/LEAD	NOTE 16.19
-011	↑	↑	↑	.675/17.15	30u"/0.76u MIN (NOTE 17) OVER 50u"/1.27u NI	NOTE 16.19
-012	2x7	↑	.600/15,240	.675/17.15	120u"~200u"/3.04um~5.08umTIN/LEAD	C
-013	2x8	↑	.700/17,780	.105/ 2.67	30u"/0.76u MIN (NOTE 17) OVER 50u"/1.27u NI	D
-014	↑	↑	↑	.105/ 2.67	120u"~200u"/3.04um~5.08umTIN/LEAD	NOTE 16.19
-015	↑	↑	↑	.150/ 3.81	30u"/0.76u MIN (NOTE 17) OVER 50u"/1.27u NI	NOTE 16.19
-016	↑	↑	↑	.150/ 3.81	120u"~200u"/3.04um~5.08umTIN/LEAD	NOTE 16.19
-017	↑	↑	↑	.675/17.15	30u"/0.76u MIN (NOTE 17) OVER 50u"/1.27u NI	NOTE 16.19
-018	2x8	↑	.700/17,780	.675/17.15	120u"~200u"/3.04um~5.08umTIN/LEAD	NOTE 16.19
-019	2x10	↑	.900/22,860	.105/ 2.67	30u"/0.76u MIN (NOTE 17) OVER 50u"/1.27u NI	NOTE 16.19
-020	↑	↑	↑	.105/ 2.67	120u"~200u"/3.04um~5.08umTIN/LEAD	NOTE 16.19
-021	↑	↑	↑	.150/ 3.81	30u"/0.76u MIN (NOTE 17) OVER 50u"/1.27u NI	NOTE 16.19
-022	↑	↑	↑	.150/ 3.81	120u"~200u"/3.04um~5.08umTIN/LEAD	NOTE 16.19
-023	↑	↑	↑	.675/17.15	30u"/0.76u MIN (NOTE 17) OVER 50u"/1.27u NI	NOTE 16.19
-024	2x10	↑	.900/22,860	.675/17.15	120u"~200u"/3.04um~5.08umTIN/LEAD	NOTE 16.19
-025	2x13	↑	1.200/30,480	.105/ 2.67	30u"/0.76u MIN (NOTE 17) OVER 50u"/1.27u NI	NOTE 16.19
-026	↑	↑	↑	.105/ 2.67	120u"~200u"/3.04um~5.08umTIN/LEAD	NOTE 16.19
-027	↑	↑	↑	.150/ 3.81	30u"/0.76u MIN (NOTE 17) OVER 50u"/1.27u NI	NOTE 16.19
-028	↑	↑	↑	.150/ 3.81	120u"~200u"/3.04um~5.08umTIN/LEAD	NOTE 16.19
-029	↑	↑	↑	.675/17.15	30u"/0.76u MIN (NOTE 17) OVER 50u"/1.27u NI	NOTE 16.19
-030	2x13	↑	1.200/30,480	.675/17.15	120u"~200u"/3.04um~5.08umTIN/LEAD	NOTE 16.19
-031	2x17	↑	1.600/40,640	.105/ 2.67	30u"/0.76u MIN (NOTE 17) OVER 50u"/1.27u NI	NOTE 16.19
-032	↑	↑	↑	.105/ 2.67	120u"~200u"/3.04um~5.08umTIN/LEAD	NOTE 16.19
-033	↑	↑	↑	.150/ 3.81	30u"/0.76u MIN (NOTE 17) OVER 50u"/1.27u NI	NOTE 16.19
-034	↑	↑	↑	.150/ 3.81	120u"~200u"/3.04um~5.08umTIN/LEAD	NOTE 16.19
-035	↑	↑	↑	.675/17.15	30u"/0.76u MIN (NOTE 17) OVER 50u"/1.27u NI	NOTE 16.19
65863-036	2x17	NO	1.600/40,640	.675/17.15	120u"~200u"/3.04um~5.08umTIN/LEAD	D

mat'l code	surface	tolerance	projection	product family
ISO 1302	ISO 205	ISO 1101	MM	QUICKIE
tolerances unless otherwise specified	XXE/XXD/XXH/3	XXE/XXD/XXH/3	scale 1:1	title
angles	linear	XXXE/XXD/XXH/3	Amphenol FCI	HEADER, QUICKIE
0±.2°	dr	M. CORNMANN	8/21/90	SEA-HORSE, VERTICAL
	engr	M. SMYK	8/21/90	
	chr	M. SMYK	8/21/90	
	pppd	M. SMYK	8/21/90	
sheet	revision			dwg no
index	sheet			65863
				sheet 3 of 23 size
				A3
				type Product Customer Drawing



PRODUCT NO NOTE 12,13	SIZE	LAUNCH NOTE 8	DIM B	DIM D	TERMINAL PLATING	STYLE
65863-037	2x20	NO	1.900/48,260	.105 / 2.67	30u"/0.76u MIN (NOTE 17) OVER 50u"/1.27u NI	D
-038	↓	↓	↓	.105 / 2.67	120u"~200u" /3.04um~5.08umTIN/LEAD	NOTE 16,19
-039	↓	↓	↓	.150 / 3.81	30u"/0.76u MIN (NOTE 17) OVER 50u"/1.27u NI	NOTE 16,19
-040	↓	↓	↓	.150 / 3.81	120u"~200u" /3.04um~5.08umTIN/LEAD	NOTE 16,19
-041	↓	↓	↓	.675 / 17.15	30u"/0.76u MIN (NOTE 17) OVER 50u"/1.27u NI	NOTE 16,19
-042	2x20	↓	1.900 / 48,260	.105 / 2.67	120u"~200u" /3.04um~5.08umTIN/LEAD	NOTE 16,19
-043	2x25	↓	2.400 / 60,960	.105 / 2.67	30u"/0.76u MIN (NOTE 17) OVER 50u"/1.27u NI	NOTE 16,19
-044	↓	↓	↓	.105 / 2.67	120u"~200u" /3.04um~5.08umTIN/LEAD	NOTE 16,19
-045	↓	↓	↓	.150 / 3.81	30u"/0.76u MIN (NOTE 17) OVER 50u"/1.27u NI	NOTE 16,19
-046	↓	↓	↓	.150 / 3.81	120u"~200u" /3.04um~5.08umTIN/LEAD	NOTE 16,19
-047	↓	↓	↓	.675 / 17.15	30u"/0.76u MIN (NOTE 17) OVER 50u"/1.27u NI	NOTE 16,19
-048	2x25	NO	2.400 / 60,960	.675 / 17.15	120u"~200u" /3.04um~5.08umTIN/LEAD	D
-049	2x5	STD	.400 / 10,160	.105 / 2.67	30u"/0.76u MIN (NOTE 17) OVER 50u"/1.27u NI	A
-050	↓	↓	↓	.105 / 2.67	120u"~200u" /3.04um~5.08umTIN/LEAD	NOTE 16,19
-051	↓	↓	↓	.150 / 3.81	30u"/0.76u MIN (NOTE 17) OVER 50u"/1.27u NI	NOTE 16,19
-052	↓	↓	↓	.150 / 3.81	120u"~200u" /3.04um~5.08umTIN/LEAD	NOTE 16,19
-053	↓	↓	↓	.675 / 17.15	30u"/0.76u MIN (NOTE 17) OVER 50u"/1.27u NI	NOTE 16,19
-054	2x5	↓	.400 / 10,160	.675 / 17.15	120u"~200u" /3.04um~5.08umTIN/LEAD	A
-055	2x7	↓	600 / 15,240	.105 / 2.67	30u"/0.76u MIN (NOTE 17) OVER 50u"/1.27u NI	C
-056	↓	↓	↓	.105 / 2.67	120u"~200u" /3.04um~5.08umTIN/LEAD	NOTE 16,19
-057	↓	↓	↓	.150 / 3.81	30u"/0.76u MIN (NOTE 17) OVER 50u"/1.27u NI	NOTE 16,19
-058	↓	↓	↓	.150 / 3.81	120u"~200u" /3.04um~5.08umTIN/LEAD	NOTE 16,19
-059	↓	↓	↓	.675 / 17.15	30u"/0.76u MIN (NOTE 17) OVER 50u"/1.27u NI	NOTE 16,19
-060	2x7	↓	.600 / 15,240	.675 / 17.15	120u"~200u" /3.04um~5.08umTIN/LEAD	C
-061	2x8	↓	.700 / 17,780	.105 / 2.67	30u"/0.76u MIN (NOTE 17) OVER 50u"/1.27u NI	D
-062	↓	↓	↓	.105 / 2.67	120u"~200u" /3.04um~5.08umTIN/LEAD	NOTE 16,19
-063	↓	↓	↓	.150 / 3.81	30u"/0.76u MIN (NOTE 17) OVER 50u"/1.27u NI	NOTE 16,19
-064	↓	↓	↓	.150 / 3.81	120u"~200u" /3.04um~5.08umTIN/LEAD	NOTE 16,19
-065	↓	↓	↓	.675 / 17.15	30u"/0.76u MIN (NOTE 17) OVER 50u"/1.27u NI	NOTE 16,19
-066	2x8	↓	.700 / 17,780	.675 / 17.15	120u"~200u" /3.04um~5.08umTIN/LEAD	NOTE 16,19
-067	2x10	↓	.900 / 22,860	.105 / 2.67	30u"/0.76u MIN (NOTE 17) OVER 50u"/1.27u NI	NOTE 22
-068	↓	↓	↓	.105 / 2.67	120u"~200u" /3.04um~5.08umTIN/LEAD	NOTE 16,19
-069	↓	↓	↓	.150 / 3.81	30u"/0.76u MIN (NOTE 17) OVER 50u"/1.27u NI	NOTE 16,19
-070	↓	↓	↓	.150 / 3.81	120u"~200u" /3.04um~5.08umTIN/LEAD	NOTE 16,19
-071	↓	↓	↓	.675 / 17.15	30u"/0.76u MIN (NOTE 17) OVER 50u"/1.27u NI	NOTE 16,19
65863-072	2x10	STD	.900 / 22,860	.675 / 17.15	120u"~200u" /3.04um~5.08umTIN/LEAD	D



mat'l code		surface		tolerance		projection		product family	
ltr	ecn no	dr	date	ISO 1302	ISO 1101	MM	MM	HEADER, QUICKIE	QUICKIE
BC				tolerances unless otherwise specified	tolerances unless otherwise specified			SEA-HORSE, VERTICAL	
				angles	linear				
				0±2°	XXXL05/XXXL03				
				dr	XXXL0020/XXXL051				
				engr	M. CORNMANN 8/21/90				
				chr	M. SMYK 8/21/90				
				pppd	M. SMYK 8/21/90				
sheet	revision							Amphenol FCI	sheet 4 of 23 size A3
index	sheet								type Product Customer Drawing

1 2 3 4 5 6

PRODUCT NO NOTES 12,13	SIZE	LATCH NOTE 8	DIM B	DIM D	TERMINAL PLATING	STYLE
65863-073/-073PC	2x13	STD	1.200/30,480	.105/ 2.67	30u"/0.76u MIN (NOTE 17) OVER 50u"/1.27u NI	D
-074				.105/ 2.67	120u"~200u"/3.04um~5.08umTIN/LEAD	NOTE 22
-075				.150/ 3.81	30u"/0.76u MIN (NOTE 17) OVER 50u"/1.27u NI	NOTE 16,19
-076				.150/ 3.81	120u"~200u"/3.04um~5.08umTIN/LEAD	NOTE 16,19
-077				.675/17,15	30u"/0.76u MIN (NOTE 17) OVER 50u"/1.27u NI	NOTE 16,19
-078	2x13		1.200/30,480	.675/17,15	120u"~200u"/3.04um~5.08umTIN/LEAD	NOTE 16,19
-079/-079PC	2x17		1.600/40,640	.105/ 2.67	30u"/0.76u MIN (NOTE 17) OVER 50u"/1.27u NI	NOTE 22
-080				.105/ 2.67	120u"~200u"/3.04um~5.08umTIN/LEAD	NOTE 16,19
-081				.150/ 3.81	30u"/0.76u MIN (NOTE 17) OVER 50u"/1.27u NI	NOTE 16,19
-082				.150/ 3.81	120u"~200u"/3.04um~5.08umTIN/LEAD	NOTE 16,19
-083				.675/17,15	30u"/0.76u MIN (NOTE 17) OVER 50u"/1.27u NI	NOTE 16,19
-084	2x17		1.600/40,640	.675/17,15	120u"~200u"/3.04um~5.08umTIN/LEAD	NOTE 16,19
-085/-085PC	2x20		1.900/48,260	.105/ 2.67	30u"/0.76u MIN (NOTE 17) OVER 50u"/1.27u NI	NOTE 16,19
-086				.105/ 2.67	120u"~200u"/3.04um~5.08umTIN/LEAD	NOTE 16,19
-087				.150/ 3.81	30u"/0.76u MIN (NOTE 17) OVER 50u"/1.27u NI	NOTE 16,19
-088				.150/ 3.81	120u"~200u"/3.04um~5.08umTIN/LEAD	NOTE 16,19
-089				.675/17,15	30u"/0.76u MIN (NOTE 17) OVER 50u"/1.27u NI	NOTE 16,19
-090	2x20		1.900/48,260	.675/17,15	120u"~200u"/3.04um~5.08umTIN/LEAD	NOTE 16,19
-091	2x25		2.400/60,960	.105/ 2.67	30u"/0.76u MIN (NOTE 17) OVER 50u"/1.27u NI	NOTE 16,19
-092				.105/ 2.67	120u"~200u"/3.04um~5.08umTIN/LEAD	NOTE 16,19
-093				.150/ 3.81	30u"/0.76u MIN (NOTE 17) OVER 50u"/1.27u NI	NOTE 16,19
-094				.150/ 3.81	120u"~200u"/3.04um~5.08umTIN/LEAD	NOTE 16,19
-095				.675/17,15	30u"/0.76u MIN (NOTE 17) OVER 50u"/1.27u NI	NOTE 16,19
-096	2x25	STD	2.400/60,960	.675/17,15	120u"~200u"/3.04um~5.08umTIN/LEAD	NOTE 16,19
-097	2x30	NO	2.900/73,660	.105/ 2.67	30u"/0.76u MIN (NOTE 17) OVER 50u"/1.27u NI	NOTE 16,19
-098				.105/ 2.67	120u"~200u"/3.04um~5.08umTIN/LEAD	NOTE 16,19
-099				.150/ 3.81	30u"/0.76u MIN (NOTE 17) OVER 50u"/1.27u NI	NOTE 16,19
-100				.150/ 3.81	120u"~200u"/3.04um~5.08umTIN/LEAD	NOTE 16,19
-101				.675/17,15	30u"/0.76u MIN (NOTE 17) OVER 50u"/1.27u NI	NOTE 16,19
-102		NO		.675/17,15	120u"~200u"/3.04um~5.08umTIN/LEAD	NOTE 16,19
-103		STD		.105/ 2.67	30u"/0.76u MIN (NOTE 17) OVER 50u"/1.27u NI	NOTE 16,19
-104				.105/ 2.67	120u"~200u"/3.04um~5.08umTIN/LEAD	NOTE 16,19
-105				.150/ 3.81	30u"/0.76u MIN (NOTE 17) OVER 50u"/1.27u NI	NOTE 16,19
-106				.150/ 3.81	120u"~200u"/3.04um~5.08umTIN/LEAD	NOTE 16,19
-107				.675/17,15	30u"/0.76u MIN (NOTE 17) OVER 50u"/1.27u NI	NOTE 16,19
65863-108	2x30	STD	2.900/73,660	.675/17,15	120u"~200u"/3.04um~5.08umTIN/LEAD	NOTE 16,19

mat'l code	surface	tolerance	projection	product family
lfr ecn no	ISO 1302	ISO 1101	MM	QUICKIE
dr	dr	dr	MM	QUICKIE
date	date	date	MM	QUICKIE
tolerances unless otherwise specified	tolerances unless otherwise specified	tolerances unless otherwise specified	tolerances unless otherwise specified	tolerances unless otherwise specified
angles	angles	angles	angles	angles
linear	linear	linear	linear	linear
0±2°	0±2°	0±2°	0±2°	0±2°
dr	M. CORNMANN	8/21/90	dr	M. CORNMANN
engr	M. SMYK	8/21/90	engr	M. SMYK
chr	M. SMYK	8/21/90	chr	M. SMYK
pppd	M. SMYK	8/21/90	pppd	M. SMYK
sheet revision	sheet revision	sheet revision	sheet revision	sheet revision
index sheet	index sheet	index sheet	index sheet	index sheet

mat'l code	surface	tolerance	projection	product family
lfr ecn no	ISO 1302	ISO 1101	MM	QUICKIE
dr	dr	dr	MM	QUICKIE
date	date	date	MM	QUICKIE
tolerances unless otherwise specified	tolerances unless otherwise specified	tolerances unless otherwise specified	tolerances unless otherwise specified	tolerances unless otherwise specified
angles	angles	angles	angles	angles
linear	linear	linear	linear	linear
0±2°	0±2°	0±2°	0±2°	0±2°
dr	M. CORNMANN	8/21/90	dr	M. CORNMANN
engr	M. SMYK	8/21/90	engr	M. SMYK
chr	M. SMYK	8/21/90	chr	M. SMYK
pppd	M. SMYK	8/21/90	pppd	M. SMYK
sheet revision	sheet revision	sheet revision	sheet revision	sheet revision
index sheet	index sheet	index sheet	index sheet	index sheet

form: A3-2016-02-24 1 2 3 4 5 6

PRODUCT NO NOTE 12.13	SIZE	LATCH NOTE 8	DIM B	DIM D	TERMINAL PLATING	STYLE
65863-145	2x25	STD	2.400/60,960	.150 / 3.81	30u" / 0.76u MIN (NOTE 17) OVER 50u" / 1.27u NI	D
-146	2x30	STD	2.900 / 73.660	.150 / 3.81	30u" / 0.76u MIN (NOTE 17) OVER 50u" / 1.27u NI	D
-147	2x5	NO	.400 / 10.160	.675 / 17.15	15u" / 0.38u MIN (NOTE 17) OVER 50u" / 1.27u NI	A
-148	2x7	↓	.600 / 15.240	↓	↓	C
-149	2x8	↓	.700 / 17.780	↓	↓	D
-150	2x10	↓	.900 / 22.860	↓	↓	↓
-151	2x13	↓	1.200 / 30.480	↓	↓	↓
-152	2x17	↓	1.600 / 40.640	↓	↓	↓
-153	2x20	↓	1.900 / 48.260	↓	↓	↓
-154	2x25	↓	2.400 / 60.960	↓	↓	↓
-155	2x30	NO	2.900 / 73.660	↓	↓	D
-156	2x5	STD	.400 / 10.160	↓	↓	A
-157	2x7	↓	.600 / 15.240	↓	↓	C
-158	2x8	↓	.700 / 17.780	↓	↓	D
-159	2x10	↓	.900 / 22.860	↓	↓	↓
-160	2x13	↓	1.200 / 30.480	↓	↓	↓
-161	2x17	↓	1.600 / 40.640	↓	↓	↓
-162	2x20	↓	1.900 / 48.260	↓	↓	↓
-163	2x25	↓	2.400 / 60.960	↓	↓	↓
-164	2x30	STD	2.900 / 73.660	.675 / 17.15	15u" / 0.38u MIN (NOTE 17) OVER 50u" / 1.27u NI	D
-165	2x5	LP	.400 / 10.160	.105 / 2.67	30u" / 0.76u MIN (NOTE 17) OVER 50u" / 1.27u NI	A
-166	↓	↓	↓	.105 / 2.67	120u" ~ 200u" / 3.04um ~ 5.08um TIN / LEAD	↓
-167	↓	↓	↓	.150 / 3.81	30u" / 0.76u MIN (NOTE 17) OVER 50u" / 1.27u NI	NOTE 16.19
-168	↓	↓	↓	.150 / 3.81	120u" ~ 200u" / 3.04um ~ 5.08um TIN / LEAD	NOTE 16.19
-169	↓	↓	↓	.675 / 17.15	30u" / 0.76u MIN (NOTE 17) OVER 50u" / 1.27u NI	↓
-170	2x5	↓	.400 / 10.160	.675 / 17.15	120u" ~ 200u" / 3.04um ~ 5.08um TIN / LEAD	A
-171	2x7	↓	.600 / 15.240	.105 / 2.67	30u" / 0.76u MIN (NOTE 17) OVER 50u" / 1.27u NI	C
-172	↓	↓	↓	.105 / 2.67	120u" ~ 200u" / 3.04um ~ 5.08um TIN / LEAD	NOTE 16.19
-173	↓	↓	↓	.150 / 3.81	30u" / 0.76u MIN (NOTE 17) OVER 50u" / 1.27u NI	NOTE 16.19
-174	↓	↓	↓	.150 / 3.81	120u" ~ 200u" / 3.04um ~ 5.08um TIN / LEAD	NOTE 16.19
-175	↓	↓	↓	.675 / 17.15	30u" / 0.76u MIN (NOTE 17) OVER 50u" / 1.27u NI	↓
-176	2x7	↓	.600 / 15.240	.675 / 17.15	120u" ~ 200u" / 3.04um ~ 5.08um TIN / LEAD	C
-177	2x8	↓	.700 / 17.780	.105 / 2.67	30u" / 0.76u MIN (NOTE 17) OVER 50u" / 1.27u NI	D
-178	2x8	↓	.700 / 17.780	.105 / 2.67	120u" ~ 200u" / 3.04um ~ 5.08um TIN / LEAD	NOTE 16.19
-179	2x8	↓	.700 / 17.780	.150 / 3.81	30u" / 0.76u MIN (NOTE 17) OVER 50u" / 1.27u NI	D
65863-180	2x8	LP	.700 / 17.780	.150 / 3.81	120u" ~ 200u" / 3.04um ~ 5.08um TIN / LEAD	D

mat'l code	surface	tolerance	projection	product family
ltr ecn no	ISO 1302	ISO 1101	MM	QUICKIE
date				
angles	linear	XXE10/XXE13		
0+2*		XXE10/020 XXE10/051	scale 1:1	
dr	M. CORNMANN	8/21/90		
engr	M. SMYK	8/21/90		
chr	M. SMYK	8/21/90		
pppd	M. SMYK	8/21/90		
sheet revision				
index sheet				


form: A3-2016-02-24

PDS: Rev: B6

STATUS: Released

Printed: Jan 23, 2017

1 2 3 4 5 6



mat'l code

surface

tolerance

projection

product family

ISO 1302

ISO 1101

MM

QUICKIE

sheet revision

index sheet

title


HEADER, QUICKIE

SEA-HORSE, VERTICAL

sheet 7 of 23 size

65863

Product Customer Drawing



sheet revision

index sheet

title

HEADER, QUICKIE

SEA-HORSE, VERTICAL

sheet 7 of 23 size

65863

Product Customer Drawing

PRODUCT NO NOTE 12.13	SIZE	LATCH NOTE 8	DIM B	DIM D	TERMINAL PLATING	STYLE
65863-181	2x8	LP	.700/17,780	.675/17,15	30u"~0.76u MIN (NOTE 17) OVER 50u"/1.27u NI	D
-182	2x8		.700/17,780	.675/17,15	120u"~200u"/3.04um~5.08umTIN/LEAD	NOTE 16.19
-183	2x10		.900/22,860	.105/ 2.67	30u"~0.76u MIN (NOTE 17) OVER 50u"/1.27u NI	NOTE 16.19
-184				.105/ 2.67	120u"~200u"/3.04um~5.08umTIN/LEAD	NOTE 16.19
-185				.150/ 3.81	30u"~0.76u MIN (NOTE 17) OVER 50u"/1.27u NI	NOTE 16.19
-186				.150/ 3.81	120u"~200u"/3.04um~5.08umTIN/LEAD	NOTE 16.19
-187				.675/17,15	30u"~0.76u MIN (NOTE 17) OVER 50u"/1.27u NI	NOTE 16.19
-188	2x10		.900/22,860	.675/17,15	120u"~200u"/3.04um~5.08umTIN/LEAD	NOTE 16.19
-189	2x13		1.200/30,480	.105/ 2.67	30u"~0.76u MIN (NOTE 17) OVER 50u"/1.27u NI	NOTE 16.19
-190				.105/ 2.67	120u"~200u"/3.04um~5.08umTIN/LEAD	NOTE 16.19
-191				.150/ 3.81	30u"~0.76u MIN (NOTE 17) OVER 50u"/1.27u NI	NOTE 16.19
-192				.150/ 3.81	120u"~200u"/3.04um~5.08umTIN/LEAD	NOTE 16.19
-193				.675/17,15	30u"~0.76u MIN (NOTE 17) OVER 50u"/1.27u NI	NOTE 16.19
-194	2x13		1.200/30,480	.675/17,15	120u"~200u"/3.04um~5.08umTIN/LEAD	NOTE 16.19
-195	2x17		1.600/40,640	.105/ 2.67	30u"~0.76u MIN (NOTE 17) OVER 50u"/1.27u NI	NOTE 16.19
-196				.105/ 2.67	120u"~200u"/3.04um~5.08umTIN/LEAD	NOTE 16.19
-197				.150/ 3.81	30u"~0.76u MIN (NOTE 17) OVER 50u"/1.27u NI	NOTE 16.19
-198				.150/ 3.81	120u"~200u"/3.04um~5.08umTIN/LEAD	NOTE 16.19
-199				.675/17,15	30u"~0.76u MIN (NOTE 17) OVER 50u"/1.27u NI	NOTE 16.19
-200	2x17		1.600/40,640	.675/17,15	120u"~200u"/3.04um~5.08umTIN/LEAD	NOTE 16.19
-201	2x20		1.900/48,260	.105/ 2.67	30u"~0.76u MIN (NOTE 17) OVER 50u"/1.27u NI	NOTE 16.19
-202				.105/ 2.67	120u"~200u"/3.04um~5.08umTIN/LEAD	NOTE 16.19
-203				.150/ 3.81	30u"~0.76u MIN (NOTE 17) OVER 50u"/1.27u NI	NOTE 16.19
-204				.150/ 3.81	120u"~200u"/3.04um~5.08umTIN/LEAD	NOTE 16.19
-205				.675/17,15	30u"~0.76u MIN (NOTE 17) OVER 50u"/1.27u NI	NOTE 16.19
-206	2x20		1.900/48,260	.675/17,15	120u"~200u"/3.04um~5.08umTIN/LEAD	NOTE 16.19
-207	2x25		2.400/60,960	.105/ 2.67	30u"~0.76u MIN (NOTE 17) OVER 50u"/1.27u NI	NOTE 16.19
-208				.105/ 2.67	120u"~200u"/3.04um~5.08umTIN/LEAD	NOTE 16.19
-209				.150/ 3.81	30u"~0.76u MIN (NOTE 17) OVER 50u"/1.27u NI	NOTE 16.19
-210				.150/ 3.81	120u"~200u"/3.04um~5.08umTIN/LEAD	NOTE 16.19
-211				.675/17,15	30u"~0.76u MIN (NOTE 17) OVER 50u"/1.27u NI	NOTE 16.19
-212	2x25		2.400/60,960	.675/17,15	120u"~200u"/3.04um~5.08umTIN/LEAD	NOTE 16.19
-213	2x30		2.900/73,660	.105/ 2.67	30u"~0.76u MIN (NOTE 17) OVER 50u"/1.27u NI	NOTE 16.19
-214	2x30		2.900/73,660	.105/ 2.67	120u"~200u"/3.04um~5.08umTIN/LEAD	NOTE 16.19
-215	2x30		2.900/73,660	.150/ 3.81	30u"~0.76u MIN (NOTE 17) OVER 50u"/1.27u NI	NOTE 16.19
65863-216	2x30	LP	2.900/73,660	.150/ 3.81	120u"~200u"/3.04um~5.08umTIN/LEAD	NOTE 16.19



mat'l code		surface		tolerance		projection		product family	
ltr	ecn no	dr	date	ISO 1302	ISO 1101	ISO 1101	MM	HEADER, QUICKIE	QUICKIE
BC				tolerances unless otherwise specified				SEA-HORSE, VERTICAL	
				angles	linear	angular	scale 1:1		
				0±2°	XXXL05/XXXL03	XXXL00/XXXL01			
				dr	M. CORNMANI	8/21/90			
				engr	M. SMYK	8/21/90			
				chr	M. SMYK	8/21/90			
				pppd	M. SMYK	8/21/90			
sheet	revision							Amphenol FCI	sheet 8 of 23 size A3
index	sheet								type Product Customer Drawing

1 2 3 4 5 6

PRODUCT NO NOTES 12,13	SIZE	LATCH NOTE 8	DIM B	DIM D	TERMINAL PLATING	STYLE
65863-217	2x30	LP	2.900/73,660	.675/17,15	30u"/0.76u MIN (NOTE 17) OVER 50u"/1.27u NI	D
-218	2x30		2.900/73,660	.675/17,15	120u"~200u"/3.04um~5.08umTIN/LEAD	D
-219	2x5		.400/10,160	.105/ 2.67	30u"/0.76u MIN (NOTE 17) OVER 50u"/1.27u NI	A
-220	2x7		.600/15,240			C
-221	2x8		.700/17,780			D
-222	2x10		.900/22,860			D
-223	2x13		1.200/30,480			D
-224	2x17		1.600/40,640			D
-225	2x20		1.900/48,260			D
-226	2x25		2.400/60,960			D
-227	2x30		2.900/73,660	.105/ 2.67		D
-228	2x20		1.900/48,260	.150/ 3.81		D
-229	2x5		.400/10,160			A
-230	2x7		.600/15,240			C
-231	2x8		.700/17,780			D
-232	2x10		.900/22,860			D
-233	2x13		1.200/30,480			D
-234	2x17		1.600/40,640			D
-235	2x20		1.900/48,260			D
-236	2x25		2.400/60,960			D
-237	2x30		2.900/73,660	.150/ 3.81	30u"/0.76u MIN (NOTE 17) OVER 50u"/1.27u NI	D
-238	2x5		.400/10,160	.675/17,15	15u"/0.38u MIN (NOTE 17) OVER 50u"/1.27u NI	A
-239	2x7		.600/15,240			C
-240	2x8		.700/17,780			D
-241	2x10		.900/22,860			D
-242	2x13		1.200/30,480			D
-243	2x17		1.600/40,640			D
-244	2x20		1.900/48,260			D
-245	2x25		2.400/60,960			D
-246	2x30	LP	2.900/73,660	.675/17,15	15u"/0.38u MIN (NOTE 17) OVER 50u"/1.27u NI	D
-247	2x5	NO	.400/10,160	.105/ 2.67	30u"/0.76u MIN (NOTE 17) OVER 50u"/1.27u NI	A
-248	2x7		.600/15,240			C
-249	2x8		.700/17,780			D
-250	2x10		.900/22,860			D
-251	2x13		1.200/30,480			D
65863-252	2x17	NO	1.600/40,640	.105/ 2.67	30u"/0.76u MIN (NOTE 17) OVER 50u"/1.27u NI	D

mat'l code		surface		tolerance		projection		product family	
ltn	ecn no	dr	date	ISO 1302	ISO 1101	MM	MM	QUICKIE	QUICKIE
BC				tolerances unless otherwise specified	linear	XXL05/XXL03	XXL05/XXL03	HEADER, QUICKIE	SEA-HORSE, VERTICAL
				angles	0+2°	XXXL000	XXXL051		
				dr	M. CORNMANN	8/21/90			
				engr	M. SMYK	8/21/90			
				chr	M. SMYK	8/21/90			
				pppd	M. SMYK	8/21/90			
sheet	revision								
index	sheet								
title		scale		type		sheet no		sheet 9 of 23 size	
SEA-HORSE, VERTICAL		1:1		Product Customer		65863		A3	
drawing		Drawing		Drawing		Drawing		Drawing	

Amphenol FCI

© 2016 AFCI

form: A3-2016-02-24

1 2 3 4 5 6

PDS: Rev: 86

STATUS: Released

Printed: Jan 23, 2017

1 2 3 4 5 6

PRODUCT NO NOTE 12,15	SIZE	LATCH NOTE 8	DIM B	DIM D	TERMINAL PLATING	STYLE
65863-253	2x20	NO	1.900/48,260	.105/ 2.67	30u" / 0.76u MIN (NOTE 17) OVER 50u" / 1.27u NI	D
-254	2x25	↓	2.400/60,960	.105/ 2.67	↓	D
-255	2x30	↓	2.900/73,660	.105/ 2.67	↓	D
-256	2x5		.400/10,160	.675/17,15		A
-257	2x7		.600/15,240	↓		C
-258	2x8		.700/17,780	↓		D
-259	2x10		.900/22,860	↓		↓
-260	2x13		1.200/30,480	↓		↓
-261	2x17		1.600/40,640	↓		↓
-262	2x20		1.900/48,260	↓		↓
-263	2x25	↓	2.400/60,960	.675/17,15	↓	D
-264	2x30	NO	2.900/73,660	.105/ 2.67	↓	A
-265	2x5	STD	.400/10,160	.105/ 2.67	↓	C
-266	2x7	↓	.600/15,240	↓	↓	D
-267	2x8	↓	.700/17,780	↓	↓	D
-268	2x10		.900/22,860	↓	↓	D
-269	2x13		1.200/30,480	↓	↓	D
-270	2x17		1.600/40,640	↓	↓	D
-271	2x20		1.900/48,260	↓	↓	D
-272	2x25		2.400/60,960	↓	↓	D
-273	2x30		2.900/73,660	.105/ 2.67	↓	D
-274	2x5		.400/10,160	.675/17,15	↓	A
-275	2x7		.600/15,240	↓	↓	C
-276	2x8		.700/17,780	↓	↓	D
-277	2x10		.900/22,860	↓	↓	↓
-278	2x13		1.200/30,480	↓	↓	↓
-279	2x17		1.600/40,640	↓	↓	↓
-280	2x20		1.900/48,260	↓	↓	↓
-281	2x25	↓	2.400/60,960	↓	↓	↓
-282	2x30	STD	2.900/73,660	.675/17,15	↓	D
-283	2x5	LP	.400/10,160	.105/ 2.67	↓	A
-284	2x7	↓	.600/15,240	↓	↓	C
-285	2x8	↓	.700/17,780	↓	↓	D
-286	2x10		.900/22,860	↓	↓	D
-287	2x13	↓	1.200/30,480	↓	↓	D
65863-288	2x17	LP	1.600/40,640	.105/ 2.67	30u" / 0.76u MIN (NOTE 17) OVER 50u" / 1.27u NI	D



© 2016 AFCI

form: A3-2016-02-24 1 2 3 4 5 6

PDS: Rev: B6

STATUS: Released Printed: Jan 23, 2017

mat'l code		surface		tolerance		projection		product family	
ltn	ecn no	dr	date	ISO 1302	ISO 1101	MM	MM	QUICKIE	QUICKIE
BC				tolerances unless otherwise specified	tolerances unless otherwise specified			HEADER, QUICKIE	SEA-HORSE, VERTICAL
				angles	linear	XXL05/XXL03	MM		
				0±2°	XXXL00/XXXL05	scale 1:1			
				dr	M. CORNMANN	8/21/90			
				engr	M. SMYK	8/21/90			
				chr	M. SMYK	8/21/90			
				pppd	M. SMYK	8/21/90			
sheet	revision								
index	sheet								
Amphenol FCI		sheet 10 of 23 size		A3		type		Product Customer Drawing	

PRODUCT NO NOTE 12,13	SIZE	LATCH NOTE 8	DIM B	DIM D	TERMINAL PLATING	STYLE
65863-289	2x20	LP	1,900/48,260	.105/ 2.67	30u"/0.76u MIN (NOTE 17) OVER 50u"/1.27u Ni	D
-290	2x25	↓	2,400/60,960	.105/ 2.67	↓	D
-291	2x30		2,900/73,660	.105/ 2.67		D
-292	2x5		.400/10,160	.675/17.15		A
-293	2x7		.600/15,240	↓		C
-294	2x8		.700/17,780			D
-295	2x10		.900/22,860			↓
-296	2x13		1,200/30,480			
-297	2x17		1,600/40,640			
-298	2x20		1,900/48,260			
-299	2x25	↓	2,400/60,960	↓		↓
-300	2x30	LP	2,900/73,660	.675/17.15	30u"/0.76u MIN (NOTE 17) OVER 50u"/1.27u Ni	D
-301	2x5	NO	.400/10,160	.105/ 2.67	15u"/0.38u MIN (NOTE 17) OVER 50u"/1.27u Ni	A
-302	2x7	↓	.600/15,240	↓	↓	C
-303	2x8		.700/17,780			D
-304	2x10		.900/22,860			↓
-305	2x13		1,200/30,480			
-306	2x17		1,600/40,640			
-307	2x20		1,900/48,260			
-308	2x25		2,400/60,960	↓		↓
-309	2x30		2,900/73,660	.105/ 2.67		D
-310	2x5		.400/10,160	.150/ 3.81		A
-311	2x7		.600/15,240	↓		C
-312	2x8		.700/17,780			D
-313	2x10		.900/22,860			↓
-314	2x13		1,200/30,480			
-315	2x17		1,600/40,640			
-316	2x20		1,900/48,260			
-317	2x25	↓	2,400/60,960	↓		↓
-318	2x30	NO	2,900/73,660	.150/ 3.81		D
-319	2x5	STD	.400/10,160	.105/ 2.67		A
-320	2x7	↓	.600/15,240	↓		C
-321	2x8		.700/17,780			D
-322	2x10		.900/22,860			D
-323	2x13		1,200/30,480	↓		D
65863-324	2x17	STD	1,600/40,640	.105/ 2.67	15u"/0.38u MIN (NOTE 17) OVER 50u"/1.27u Ni	D



mat'l code	surface	tolerance	projection	product family
ISD 1302	ISD 1101	MM	QUICKIE	QUICKIE
ltr ecn no	dr	date	angles	title
			linear	HEADER, QUICKIE
			0+2°	SEA-HORSE, VERTICAL
			dr	sheet no
			M. CORNMANN	65863
			M. SMYK	sheet 11 of 23 size
			M. SMYK	A3
			M. SMYK	type Product Customer Drawing
sheet	revision			
index	sheet			

1 2 3 4 5 6

PRODUCT NO NOTE 12,13	SIZE	LATCH NOTE 8	DIM B	DIM D	TERMINAL PLATING	STYLE
65863-325	2x20	STD	1.900/48,260	.105/ 2.67	15u"/0.38u MIN (NOTE 17) OVER 50u"/1.27u NI	D
-326	2x25	↓	2.400/60,960	.105/ 2.67	↓	D
-327	2x30	↓	2.900/73,660	.105/ 2.67	↓	D
-328	2x5		.400/10,160	.150/ 3.81		A
-329	2x7		.600/15,240	↓		C
-330	2x8		.700/17,780	↓		D
-331	2x10		.900/22,860	↓		↓
-332	2x13		1.200/30,480			↓
-333	2x17		1.600/40,640			
-334	2x20		1.900/48,260			
-335	2x25	↓	2.400/60,960	↓		↓
-336	2x30	STD	2.900/73,660	.150/ 3.81		D
-337	2x5	LP	.400/10,160	.105/ 2.67		A
-338	2x7	↓	.600/15,240	↓		C
-339	2x8		.700/17,780	↓		D
-340	2x10		.900/22,860			↓
-341	2x13		1.200/30,480			
-342	2x17		1.600/40,640			
-343	2x20		1.900/48,260			↓
-344	2x25		2.400/60,960	.105/ 2.67		D
-345	2x30		2.900/73,660			
-346	2x5		.400/10,160	.150/ 3.81		A
-347	2x7		.600/15,240	↓		C
-348	2x8		.700/17,780	↓		D
-349	2x10		.900/22,860			↓
-350	2x13		1.200/30,480			
-351	2x17		1.600/40,640			
-352	2x20		1.900/48,260			
-353	2x25	↓	2.400/60,960	↓		↓
-354	2x30	LP	2.900/73,660	.150/ 3.81	15u"/0.38u MIN (NOTE 17) OVER 50u"/1.27u NI	D
-355	2x5	NO	.400/10,160	.105/ 2.67	30u"/0.76u MIN (NOTE 17) OVER 50u"/1.27u NI	B
-356	↓	NO	↓	↓	15u"/0.38u MIN (NOTE 17) OVER 50u"/1.27u NI	↓
-357		NO			30u"/0.76u MIN (NOTE 17) OVER 50u"/1.27u NI	
-358		NO			120u"~200u"/3.04um~5.08umTIN/LEAD	
-359		STD			30u"/0.76u MIN (NOTE 17) OVER 50u"/1.27u NI	↓
65863-360	2x5	STD	.400/10,160	.105/ 2.67	15u"/0.38u MIN (NOTE 17) OVER 50u"/1.27u NI	B

NOTE 16,19

Form: A3-2016-02-24

1 2 3 4 5 6

mat'l code		surface		tolerance		projection		product family	
		ISD 1302		ISD 405 ISD 1101		MM Scale 1:1		QUICKIE	
title		tolerances unless otherwise specified		M. CORNMANI 8/21/90		Amphenol FCI		HEADER, QUICKIE	
SEA-HORSE, VERTICAL				M. SMYK 8/21/90				sheet12 of 23size	
				M. SMYK 8/21/90				65863	
				M. SMYK 8/21/90				Product Customer Drawing	
sheet revision		sheet		sheet		sheet		sheet	
index									

PRODUCT NO NOTE 12,13	SIZE	LATCH NOTE 8	DIM B	DIM D	TERMINAL PLATING	STYLE
65863-361	2x5	STD	.400/10.160	.105/ 2.67	30u"/0.76u MIN (NOTE 17) OVER 50u"/1.27u NI	B
-362	↑	STD			120u-200u"/3.04u-5.08u TIN/LEAD	NOTE 16,19
-363	LP	LP			30u"/0.76u MIN (NOTE 17) OVER 50u"/1.27u NI	
-364	LP	LP			15u"/0.38u MIN (NOTE 17) OVER 50u"/1.27u NI	
-365	LP	LP			30u"/0.76u MIN (NOTE 17) OVER 50u"/1.27u NI	
-366	LP	LP			120u-200u"/3.04u-5.08u TIN/LEAD	NOTE 16,19
-367	NO	NO			30u"/0.76u MIN (NOTE 17) OVER 50u"/1.27u NI	
-368	NO	NO			15u"/0.38u MIN (NOTE 17) OVER 50u"/1.27u NI	
-369	NO	NO			30u"/0.76u MIN (NOTE 17) OVER 50u"/1.27u NI	
-370	NO	NO			120u-200u"/3.04u-5.08u TIN/LEAD	NOTE 16,19
-371	STD	STD			30u"/0.76u MIN (NOTE 17) OVER 50u"/1.27u NI	
-372	STD	STD			15u"/0.38u MIN (NOTE 17) OVER 50u"/1.27u NI	
-373	STD	STD			30u"/0.76u MIN (NOTE 17) OVER 50u"/1.27u NI	
-374	STD	STD			120u-200u"/3.04u-5.08u TIN/LEAD	NOTE 16,19
-375	LP	LP			30u"/0.76u MIN (NOTE 17) OVER 50u"/1.27u NI	
-376	LP	LP			15u"/0.38u MIN (NOTE 17) OVER 50u"/1.27u NI	
-377	LP	LP			30u"/0.76u MIN (NOTE 17) OVER 50u"/1.27u NI	
-378	LP	LP			120u-200u"/3.04u-5.08u TIN/LEAD	NOTE 16,19
-379	NO	NO			30u"/0.76u MIN (NOTE 17) OVER 50u"/1.27u NI	
-380	NO	NO			15u"/0.38u MIN (NOTE 17) OVER 50u"/1.27u NI	
-381	NO	NO			30u"/0.76u MIN (NOTE 17) OVER 50u"/1.27u NI	
-382	NO	NO			120u-200u"/3.04u-5.08u TIN/LEAD	NOTE 16,19
-383	STD	STD			30u"/0.76u MIN (NOTE 17) OVER 50u"/1.27u NI	
-384	STD	STD			15u"/0.38u MIN (NOTE 17) OVER 50u"/1.27u NI	
-385	STD	STD			30u"/0.76u MIN (NOTE 17) OVER 50u"/1.27u NI	
-386	STD	STD			120u-200u"/3.04u-5.08u TIN/LEAD	NOTE 16,19
-387	LP	LP			30u"/0.76u MIN (NOTE 17) OVER 50u"/1.27u NI	
-388	LP	LP			15u"/0.38u MIN (NOTE 17) OVER 50u"/1.27u NI	
-389	LP	LP			30u"/0.76u MIN (NOTE 17) OVER 50u"/1.27u NI	
-390	LP	LP			120u-200u"/3.04u-5.08u TIN/LEAD	NOTE 16,19
-391	STD	STD			30u"/0.76u MIN (NOTE 17) OVER 50u"/1.27u NI	
-392	NO	NO			30u"/0.76u MIN (NOTE 17) OVER 50u"/1.27u NI	
-393	LP	LP			30u"/0.76u MIN (NOTE 17) OVER 50u"/1.27u NI	D
-394	NO	NO			15u"/0.38u MIN (NOTE 17) OVER 50u"/1.27u NI	A
65863-395	2x5	STD	.400/10.160	.105/ 2.67	15u"/0.38u MIN (NOTE 17) OVER 50u"/1.27u NI	A



mat'l code		surface		tolerance		projection		product family	
ltr	ecn no	dr	date	ISO 1302	ISO 1101	MM	MM	QUICKIE	QUICKIE
BC				linear	angular	XXL05/XXL03	XXL07/XXL03	HEADER, QUICKIE	
				0+2°		XXXX.000	XXXX.051	SEA-HORSE, VERTICAL	
				dr		M. CORNMANN	8/21/90	sheet13 of 23size	
				engr		M. SMYK	8/21/90	65863	
				chr		M. SMYK	8/21/90	type Product Customer	Drawing
				pppd		M. SMYK	8/21/90		
sheet	revision								
index	sheet								

1 2 3 4 5 6

PRODUCT NO NOTE 12,13	SIZE	LATCH NOTE 8	DIM B	DIM D	TERMINAL PLATING	STYLE
65863-396	2x5	LP	.400/10.160	.105/ 2.67	15u"/0.38u MIN (NOTE 17) OVER 50u"/1.27u NI	A
-397		NO		.150/ 3.81		A
-398		STD		.150/ 3.81		A
-399		LP		.150/ 3.81		A
-400		NO		.105/ 2.67		B
-401		STD		.105/ 2.67		B
-402		LP		.105/ 2.67		B
-403		NO		.150/ 3.81		A
-404		STD		.150/ 3.81		A
-405	2x5	LP	.400/10.160	.150/ 3.81		B
-406	2x7	NO	.600/15.240	.105/ 2.67		C
-407		STD		.105/ 2.67		C
-408		LP		.105/ 2.67		C
-409		NO		.150/ 3.81		C
-410		STD		.150/ 3.81		C
-411	2x7	LP	.600/15.240	.150/ 3.81		C
-412	2x8	NO	.700/17.780	.105/ 2.67		D
-413		STD		.105/ 2.67		D
-414		LP		.105/ 2.67		D
-415		NO		.150/ 3.81		D
-416		STD		.150/ 3.81		D
-417	2x8	LP	.700/17.780	.150/ 3.81		D
-418	2x10	NO	.900/22.860	.105/ 2.67		D
-419		STD		.105/ 2.67		D
-420		LP		.105/ 2.67		D
-421		NO		.150/ 3.81		D
-422		STD		.150/ 3.81		D
-423	2x10	LP	.900/22.860	.150/ 3.81		D
-424	2x13	NO	1.200/30.480	.105/ 2.67		D
-425		STD		.105/ 2.67		D
-426		LP		.105/ 2.67		D
-427		NO		.150/ 3.81		D
-428		STD		.150/ 3.81		D
-429	2x13	LP	1.200/30.480	.150/ 3.81		D
65863-430	2x17	NO	1.600/40.640	.105/ 2.67	15u"/0.38u MIN (NOTE 17) OVER 50u"/1.27u NI	D



© 2016 AFCI

form: A3-2016-02-24 1 2 3 4 5 6

PDS: Rev :B6

STATUS:Released Printed: Jan 23, 2017

mat'l code		surface		tolerance		projection		product family	
ISD 1302		ISD 1101		ISD 1101		MM		QUICKIE	
tolerances unless otherwise specified		linear		angular		scale 1:1		title	
XXXX.000 XXXX.000		XXXX.00 XXXX.00		XXXX.00 XXXX.00		MM		HEADER, QUICKIE	
M. CORNMANN 8/21/90		M. SWYK 8/21/90		M. SWYK 8/21/90		M. SWYK 8/21/90		SEA-HORSE, VERTICAL	
M. SWYK 8/21/90		M. SWYK 8/21/90		M. SWYK 8/21/90		M. SWYK 8/21/90		sheet no	
M. SWYK 8/21/90		M. SWYK 8/21/90		M. SWYK 8/21/90		M. SWYK 8/21/90		65863	
sheet		revision		sheet		sheet		sheet14 of 23size	
index		sheet		sheet		sheet		A3	
								type Product Customer Drawing	

PRODUCT NO NOTE 12,13	SIZE	LAICII NOTE 8	DIM B	DIM D	TERMINAL PLATING	STYLE
65863-466	2x12	NO	1,100/27,940	.150/3.81	15u"/0.38u MIN (NOTE 17) OVER 50u"/1.27u NI	D
-467	STD				15u"/0.38u MIN (NOTE 17) OVER 50u"/1.27u NI	
-468	LP				15u"/0.38u MIN (NOTE 17) OVER 50u"/1.27u NI	
-469	NO				30u"/0.76u MIN (NOTE 17) OVER 50u"/1.27u NI	
-470	STD				30u"/0.76u MIN (NOTE 17) OVER 50u"/1.27u NI	
-471	LP				30u"/0.76u MIN (NOTE 17) OVER 50u"/1.27u NI	
-472	NO				30u"/0.76u MIN (NOTE 17) OVER 50u"/1.27u NI	
-473	STD				30u"/0.76u MIN (NOTE 17) OVER 50u"/1.27u NI	
-474	LP				30u"/0.76u MIN (NOTE 17) OVER 50u"/1.27u NI	
-475	NO				120u-200u"/3.04u-5.08u TIN/LEAD	NOTE 16,19
-476	STD				120u-200u"/3.04u-5.08u TIN/LEAD	NOTE 16,19
-477	LP			.150/3.81	120u-200u"/3.04u-5.08u TIN/LEAD	NOTE 16,19
-478	NO			.105/2.67	15u"/0.38u MIN (NOTE 17) OVER 50u"/1.27u NI	
-479	STD				15u"/0.38u MIN (NOTE 17) OVER 50u"/1.27u NI	
-480	LP				15u"/0.38u MIN (NOTE 17) OVER 50u"/1.27u NI	
-481	NO				30u"/0.76u MIN (NOTE 17) OVER 50u"/1.27u NI	
-482	STD				30u"/0.76u MIN (NOTE 17) OVER 50u"/1.27u NI	
-483	LP			.105/2.67	30u"/0.76u MIN (NOTE 17) OVER 50u"/1.27u NI	
-484	NO			.150/3.81	15u"/0.38u MIN (NOTE 17) OVER 50u"/1.27u NI	
-485	STD			.150/3.81	15u"/0.38u MIN (NOTE 17) OVER 50u"/1.27u NI	
-486	LP			.150/3.81	15u"/0.38u MIN (NOTE 17) OVER 50u"/1.27u NI	
-487	NO			.675/17.15	15u"/0.38u MIN (NOTE 17) OVER 50u"/1.27u NI	
-488	STD				15u"/0.38u MIN (NOTE 17) OVER 50u"/1.27u NI	
-489	LP				15u"/0.38u MIN (NOTE 17) OVER 50u"/1.27u NI	
-490	NO				30u"/0.76u MIN (NOTE 17) OVER 50u"/1.27u NI	
-491	STD				30u"/0.76u MIN (NOTE 17) OVER 50u"/1.27u NI	
-492	LP				30u"/0.76u MIN (NOTE 17) OVER 50u"/1.27u NI	
-493	NO				30u"/0.76u MIN (NOTE 17) OVER 50u"/1.27u NI	
-494	STD				30u"/0.76u MIN (NOTE 17) OVER 50u"/1.27u NI	
-495	LP				30u"/0.76u MIN (NOTE 17) OVER 50u"/1.27u NI	
-496	NO				120u-200u"/3.04u-5.08u TIN/LEAD	NOTE 16,19
-497	STD				120u-200u"/3.04u-5.08u TIN/LEAD	NOTE 16,19
-498	LP		1,100/27,940	.675/17.15	120u-200u"/3.04u-5.08u TIN/LEAD	
-499	NO		1,400/35,560	.105/2.67	15u"/0.38u MIN (NOTE 17) OVER 50u"/1.27u NI	
65863-500	2x15	STD	1,400/35,560	.105/2.67	15u"/0.38u MIN (NOTE 17) OVER 50u"/1.27u NI	D



mat'l code		surface		tolerance		projection		product family	
lfr	ecn no	dr	date	ISO 1302	ISO 1101	XXL0/XXL3	MM	QUICKIE	QUICKIE
BC				tolerances unless otherwise specified		linear	MM	HEADER, QUICKIE	SEA-HORSE, VERTICAL
				0+2*	XXL0/XXL3	XXL0/XXL3	MM		
				dr	M. CORNMANN	8/21/90	scale 1:1		
				engr	M. SMYK	8/21/90			
				chr	M. SMYK	8/21/90			
				pppd	M. SMYK	8/21/90			
sheet	revision							Amphenol FCI	sheet 6 of 23 size A3
index	sheet								type Product Customer Drawing

PRODUCT NO NOTE 12,13	SIZE	LAICH NOTE 8	DIM B	DIM D	TERMINAL PLATING	STYLE
65863-501	2x15	LP	1.400/35.560	.105/2.67	15u"/0.38u MIN (NOTE 17) OVER 50u"/1.27u NI	D
-502		NO			30u"/0.76u MIN (NOTE 17) OVER 50u"/1.27u NI	
-503		STD			30u"/0.76u MIN (NOTE 17) OVER 50u"/1.27u NI	
-504		LP			30u"/0.76u MIN (NOTE 17) OVER 50u"/1.27u NI	
-505		NO			30u"/0.76u MIN (NOTE 17) OVER 50u"/1.27u NI	
-506		STD			30u"/0.76u MIN (NOTE 17) OVER 50u"/1.27u NI	
-507		LP			30u"/0.76u MIN (NOTE 17) OVER 50u"/1.27u NI	
-508		NO			120u-200u"/3.04u-5.08u TIN/LEAD	NOTE 16,19
-509		STD			120u-200u"/3.04u-5.08u TIN/LEAD	NOTE 16,19
-510		LP		.105/2.67	120u-200u"/3.04u-5.08u TIN/LEAD	NOTE 16,19
-511		NO		.150/3.81	15u"/0.38u MIN (NOTE 17) OVER 50u"/1.27u NI	
-512		STD			15u"/0.38u MIN (NOTE 17) OVER 50u"/1.27u NI	
-513		LP			15u"/0.38u MIN (NOTE 17) OVER 50u"/1.27u NI	
-514		NO			30u"/0.76u MIN (NOTE 17) OVER 50u"/1.27u NI	
-515		STD			30u"/0.76u MIN (NOTE 17) OVER 50u"/1.27u NI	
-516		LP			30u"/0.76u MIN (NOTE 17) OVER 50u"/1.27u NI	
-517		NO			30u"/0.76u MIN (NOTE 17) OVER 50u"/1.27u NI	
-518		STD			30u"/0.76u MIN (NOTE 17) OVER 50u"/1.27u NI	
-519		LP			30u"/0.76u MIN (NOTE 17) OVER 50u"/1.27u NI	
-520		NO			120u-200u"/3.04u-5.08u TIN/LEAD	NOTE 16,19
-521		STD			120u-200u"/3.04u-5.08u TIN/LEAD	NOTE 16,19
-522		LP		.150/3.81	120u-200u"/3.04u-5.08u TIN/LEAD	NOTE 16,19
-523		NO		.105/2.67	15u"/0.38u MIN (NOTE 17) OVER 50u"/1.27u NI	
-524		STD			15u"/0.38u MIN (NOTE 17) OVER 50u"/1.27u NI	
-525		LP			15u"/0.38u MIN (NOTE 17) OVER 50u"/1.27u NI	
-526		NO			30u"/0.76u MIN (NOTE 17) OVER 50u"/1.27u NI	
-527		STD			30u"/0.76u MIN (NOTE 17) OVER 50u"/1.27u NI	
-528		LP		.105/2.67	30u"/0.76u MIN (NOTE 17) OVER 50u"/1.27u NI	
-529		NO		.150/3.81	15u"/0.38u MIN (NOTE 17) OVER 50u"/1.27u NI	
-530		STD		.150/3.81	15u"/0.38u MIN (NOTE 17) OVER 50u"/1.27u NI	
-531		LP		.150/3.81	15u"/0.38u MIN (NOTE 17) OVER 50u"/1.27u NI	
-532		NO		.675/17.15	15u"/0.38u MIN (NOTE 17) OVER 50u"/1.27u NI	
-533		STD			15u"/0.38u MIN (NOTE 17) OVER 50u"/1.27u NI	
-534		LP			15u"/0.38u MIN (NOTE 17) OVER 50u"/1.27u NI	
65863-535	2x15	NO	1.400/35.560	.675/17.15	30u"/0.76u MIN (NOTE 17) OVER 50u"/1.27u NI	D

mat'l code	surface	tolerance	projection	product family
lfr ecn no	ISO 1302	ISO 1101		QUICKIE
date				
angles	tolerances unless otherwise specified	MM		
linear	XXXX.005/XXXX.013			
0+2°	XXXX.000/XXXX.051			
dr	M. CORNMANN	8/21/90		
engr	M. SMYK	8/21/90		
chr	M. SMYK	8/21/90		
pppd	M. SMYK	8/21/90		
sheet	revision			
index	sheet			
title	HEADER, QUICKIE			
SEA-HORSE, VERTICAL				
sheet no	65863	sheet of 23		
type	Product Customer	Drawing		

form: A3-2016-02-24

1 2 3 4 5 6

Amphenol
FCI

© 2016 AFCI

mat'l code

surface

tolerance

projection

product family

ISO 1302

ISO 1101

tolerances unless otherwise specified

XXXX.005/XXXX.013

XXXX.000/XXXX.051

M. CORNMANN

M. SMYK

M. SMYK

M. SMYK

8/21/90

8/21/90

8/21/90

8/21/90

revision

sheet

HEADER, QUICKIE

SEA-HORSE, VERTICAL

sheet no

65863

sheet of 23

Product Customer

Drawing

1

2

3

4

5

6

PDS: Rev :B6

STATUS:Released

Printed: Jan 23, 2017

PRODUCT NO NOTE 12.13	SIZE	LAICII NOTE 8	DIM B	DIM D	TERMINAL PLATING	STYLE
65863-536	2x15	STD	1.400/35.560	.675/17.15	30u"/0.76u MIN (NOTE 17) OVER 50u"/1.27u NI	D
-537		LP			30u"/0.76u MIN (NOTE 17) OVER 50u"/1.27u NI	
-538		NO			30u"/0.76u MIN (NOTE 17) OVER 50u"/1.27u NI	
-539		STD			30u"/0.76u MIN (NOTE 17) OVER 50u"/1.27u NI	
-540		LP			30u"/0.76u MIN (NOTE 17) OVER 50u"/1.27u NI	
-541		NO			120u-200u"/3.04u-5.08u TIN/LEAD	NOTE 16.19
-542		STD			120u-200u"/3.04u-5.08u TIN/LEAD	NOTE 16.19
-543	2x15	LP	1.400/35.560	.675/17.15	120u-200u"/3.04u-5.08u TIN/LEAD	NOTE 16.19
-544	2x22	NO	2.100/53.340	.105/2.67	15u"/0.38u MIN (NOTE 17) OVER 50u"/1.27u NI	
-545		STD			15u"/0.38u MIN (NOTE 17) OVER 50u"/1.27u NI	
-546		LP			15u"/0.38u MIN (NOTE 17) OVER 50u"/1.27u NI	
-547		NO			30u"/0.76u MIN (NOTE 17) OVER 50u"/1.27u NI	
-548		STD			30u"/0.76u MIN (NOTE 17) OVER 50u"/1.27u NI	
-549		LP			30u"/0.76u MIN (NOTE 17) OVER 50u"/1.27u NI	
-550		NO			30u"/0.76u MIN (NOTE 17) OVER 50u"/1.27u NI	
-551		STD			30u"/0.76u MIN (NOTE 17) OVER 50u"/1.27u NI	
-552		LP			30u"/0.76u MIN (NOTE 17) OVER 50u"/1.27u NI	
-553		NO			120u-200u"/3.04u-5.08u TIN/LEAD	NOTE 16.19
-554		STD			120u-200u"/3.04u-5.08u TIN/LEAD	NOTE 16.19
-555		LP		.105/2.67	120u-200u"/3.04u-5.08u TIN/LEAD	NOTE 16.19
-556		NO		.150/3.81	15u"/0.38u MIN (NOTE 17) OVER 50u"/1.27u NI	
-557		STD			15u"/0.38u MIN (NOTE 17) OVER 50u"/1.27u NI	
-558		LP			15u"/0.38u MIN (NOTE 17) OVER 50u"/1.27u NI	
-559		NO			30u"/0.76u MIN (NOTE 17) OVER 50u"/1.27u NI	
-560		STD			30u"/0.76u MIN (NOTE 17) OVER 50u"/1.27u NI	
-561		LP			30u"/0.76u MIN (NOTE 17) OVER 50u"/1.27u NI	
-562		NO			30u"/0.76u MIN (NOTE 17) OVER 50u"/1.27u NI	
-563		STD			30u"/0.76u MIN (NOTE 17) OVER 50u"/1.27u NI	
-564		LP			30u"/0.76u MIN (NOTE 17) OVER 50u"/1.27u NI	
-565		NO			120u-200u"/3.04u-5.08u TIN/LEAD	NOTE 16.19
-566		STD			120u-200u"/3.04u-5.08u TIN/LEAD	NOTE 16.19
-567		LP		.150/3.81	120u-200u"/3.04u-5.08u TIN/LEAD	NOTE 16.19
-568		NO		.105/2.67	15u"/0.38u MIN (NOTE 17) OVER 50u"/1.27u NI	
-569		STD		.105/2.67	15u"/0.38u MIN (NOTE 17) OVER 50u"/1.27u NI	
65863-570	2x22	LP	2.100/53.340	.105/2.67	15u"/0.38u MIN (NOTE 17) OVER 50u"/1.27u NI	D



mat'l code		surface		tolerance		projection		product family	
ltr	ecn no	dr	date	ISO 1302	ISO 1101	MM	MM	HEADER, QUICKIE	QUICKIE
BC				tolerances unless otherwise specified	XXXX.005/XXXX.01	XXXX.005/XXXX.01	XXXX.005/XXXX.01	SEA-HORSE, VERTICAL	
				angles	linear	linear	linear		
				0±2°					
				dr	M. CORNMANN	8/21/90			
				engr	M. SMYK	8/21/90			
				chr	M. SMYK	8/21/90			
				pppd	M. SMYK	8/21/90			
sheet	revision								
index	sheet								
sheet no		revision		drawing no		sheet size		drawing size	
				65863		A3		A3	
				Product Customer		Drawing			

PRODUCT NO NOTE 12,13	SIZE	LATCH NOTE 8	DIM B	DIM D	TERMINAL PLATING	STYLE
65863-571	2x22	NO	2.100/53.340	.105/2.67	30u"/0.76u MIN (NOTE 17) OVER 50u"/1.27u NI	D
-572		STD		.105/2.67	30u"/0.76u MIN (NOTE 17) OVER 50u"/1.27u NI	
-573		LP		.105/2.67	30u"/0.76u MIN (NOTE 17) OVER 50u"/1.27u NI	
-574		NO		.150/3.81	15u"/0.38u MIN (NOTE 17) OVER 50u"/1.27u NI	
-575		STD		.150/3.81	15u"/0.38u MIN (NOTE 17) OVER 50u"/1.27u NI	
-576		LP		.150/3.81	15u"/0.38u MIN (NOTE 17) OVER 50u"/1.27u NI	
-577		NO		.675/17.15	15u"/0.38u MIN (NOTE 17) OVER 50u"/1.27u NI	
-578		STD			15u"/0.38u MIN (NOTE 17) OVER 50u"/1.27u NI	
-579		LP			15u"/0.38u MIN (NOTE 17) OVER 50u"/1.27u NI	
-580		NO			30u"/0.76u MIN (NOTE 17) OVER 50u"/1.27u NI	
-581		STD			30u"/0.76u MIN (NOTE 17) OVER 50u"/1.27u NI	
-582		LP			30u"/0.76u MIN (NOTE 17) OVER 50u"/1.27u NI	
-583		NO			30u"/0.76u MIN (NOTE 17) OVER 50u"/1.27u NI	
-584		STD			30u"/0.76u MIN (NOTE 17) OVER 50u"/1.27u NI	
-585		LP			30u"/0.76u MIN (NOTE 17) OVER 50u"/1.27u NI	
-586		NO			120u-200u"/3.04u-5.08u TIN/LEAD	
-587		STD			120u-200u"/3.04u-5.08u TIN/LEAD	
-588	2x22	LP	2.100/53.340	.675/17.15	120u-200u"/3.04u-5.08u TIN/LEAD	
-589	2x25	STD	2.400/60.960	.150/3.81	30u"/0.76u MIN (NOTE 17) OVER 50u"/1.27u NI	
-590				.105/2.67		
-591				.150/3.81		
-592	2x25	NO	2.400/60.960		30u"/0.76u MIN (NOTE 17) OVER 50u"/1.27u NI	
-593	2x13	LP	1.200/30.480		50u"/1.27u MIN (NOTE 17) OVER 50u"/1.27u NI	
-594	2x13	NO	1.200/30.480	.150/3.81		
-595	2x10	NO	.900/22.860	.150/3.81		
-596	2x10	STD	.900/22.860	.150/3.81		
-597	2x5	LP	.400/10.160	.150/3.81		
-598	2x5	NO	.400/10.160	.150/3.81		
-599	2x5	LP	.400/10.160	.675/17.15		
-600	2x5	NO	.400/10.160	.675/17.15	50u"/1.27u MIN (NOTE 17) OVER 50u"/1.27u NI	A
-601	2x32	NO	3.100/78.740	.105/2.67	15u"/0.38u MIN (NOTE 17) OVER 50u"/1.27u NI	D
-602	2x32	STD	3.100/78.740	.105/2.67	15u"/0.38u MIN (NOTE 17) OVER 50u"/1.27u NI	D
-603	2x32	LP	3.100/78.740	.105/2.67	15u"/0.38u MIN (NOTE 17) OVER 50u"/1.27u NI	D
65863-604	2x32	NO	3.100/78.740	.105/2.67	30u"/0.76u MIN (NOTE 17) OVER 50u"/1.27u NI	D

mat'l code	surface	tolerance	projection	product family
lfr ecn no	ISO 1302	ISO 1101		QUICKIE
date	tolerances unless otherwise specified	XXE0/XX03	MM	HEADER, QUICKIE
angles	linear	XXE1.05/XXE0.13	Scale 1:1	SEA-HORSE, VERTICAL
dr	M. CORNMANN	8/21/90		sheet no 65863
engr	M. SMYK	8/21/90		sheet19 of 23size A3
chr	M. SMYK	8/21/90		type Product Customer Drawing
pppd	M. SMYK	8/21/90		

mat'l code	surface	tolerance	projection	product family
lfr ecn no	ISO 1302	ISO 1101		QUICKIE
date	tolerances unless otherwise specified	XXE0/XX03	MM	HEADER, QUICKIE
angles	linear	XXE1.05/XXE0.13	Scale 1:1	SEA-HORSE, VERTICAL
dr	M. CORNMANN	8/21/90		sheet no 65863
engr	M. SMYK	8/21/90		sheet19 of 23size A3
chr	M. SMYK	8/21/90		type Product Customer Drawing
pppd	M. SMYK	8/21/90		



PRODUCT NO NOTE 12,13	SIZE	LAICH NOTE 8	DIM B	DIM D	TERMINAL PLATING	STYLE
65863-605	2X32	STD	3.100/78.740	.105/2.67	30u"/0.76u MIN (NOTE 17) OVER 50u"/1.27u NI	D
-606		LP			30u"/0.76u MIN (NOTE 17) OVER 50u"/1.27u NI	
-607		NO			30u"/0.76u MIN (NOTE 17) OVER 50u"/1.27u NI	
-608		STD			30u"/0.76u MIN (NOTE 17) OVER 50u"/1.27u NI	
-609		LP			30u"/0.76u MIN (NOTE 17) OVER 50u"/1.27u NI	
-610		NO			120u-200u"/3.04u-5.08u TIN/LEAD	NOTE 16,19
-611		STD			120u-200u"/3.04u-5.08u TIN/LEAD	NOTE 16,19
-612	2X32	LP	3.100/78.740	.105/2.67	120u-200u"/3.04u-5.08u TIN/LEAD	NOTE 16,19
-613	2X20	NO	1.900/48.260	.105/2.67	30u"/0.76u MIN (NOTE 17) OVER 50u"/1.27u NI	
-614	2X20	STD	1.900/48.260	.105/2.67	30u"/0.76u MIN (NOTE 17) OVER 50u"/1.27u NI	
-615	2X20	LP	1.900/48.260	.105/2.67	30u"/0.76u MIN (NOTE 17) OVER 50u"/1.27u NI	
-616	2X25	NO	2.400/60.960	.450/11.43	30u"/0.76u MIN (NOTE 17) OVER 50u"/1.27u NI	
-617	2X17	NO	1.600/40.640	.150/3.81	50u"/1.27u MIN (NOTE 17) OVER 50u"/1.27u NI	
-618	2X17	STD	1.600/40.640	.150/3.81	50u"/1.27u MIN (NOTE 17) OVER 50u"/1.27u NI	
-619	2X17	LP	1.600/40.640	.150/3.81	50u"/1.27u MIN (NOTE 17) OVER 50u"/1.27u NI	
-620	2X32	STD	3.100/78.740	.105/2.67	30u"/0.76u MIN (NOTE 17) OVER 50u"/1.27u NI	
-621	2X32	NO	3.100/78.740			
-622	2X15	STD	1.400/35.560			
-623	2X15	NO	1.400/35.560			
-624	2X22	STD	2.100/53.340			
-625	2X22	NO	2.100/53.340	.105/2.67	30u"/0.76u MIN (NOTE 17) OVER 50u"/1.27u NI	
-626	2X25	NO	2.400/60.960	.150/3.81	50u"/1.27u MIN (NOTE 17) OVER 50u"/1.27u NI	
-627	2X25	STD	2.400/60.960			
-628	2X25	LP	2.400/60.960			
-629	2X20	NO	1.900/48.260			
-630	2X20	STD	1.900/48.260			
-631	2X20	LP	1.900/48.260	.150/3.81	50u"/1.27u MIN (NOTE 17) OVER 50u"/1.27u NI	
-632	2X20	STD	1.900/48.260	.105/2.67	30u"/0.76u MIN (NOTE 17) OVER 50u"/1.27u NI	
-633	2X8	STD	.700/17.78	.150/3.81	50u"/1.27u MIN (NOTE 17) OVER 50u"/1.27u NI	D
-634	2X7	NO	.600/15.24	.236/5.99	30u"/0.76u MIN (NOTE 17) OVER 50u"/1.27u NI	C
-635	2X5	STD	.400/10.16	.520/13.21	30u"/0.76u MIN (NOTE 17) OVER 50u"/1.27u NI	A
-636	2X8	NO	.700/17.78	.150/3.81	30u"/0.76u MIN (NOTE 17) OVER 50u"/1.27u NI	D
-637	2X8	STD	.700/17.78	.150/3.81	30u"/0.76u MIN (NOTE 17) OVER 50u"/1.27u NI	D
-638	2X10	NO	.800/20.32	.150/3.81	30u"/0.76u MIN (NOTE 17) OVER 50u"/1.27u NI	D
65863-639	2X10	STD	.800/20.32	.150/3.81	30u"/0.76u MIN (NOTE 17) OVER 50u"/1.27u NI	D

CUSTOMER SPECIAL

PRODUCT NO	SIZE	LAICH	DIM B	DIM D	TERMINAL PLATING	STYLE
65863-605	2X32	STD	3.100/78.740	.105/2.67	30u"/0.76u MIN (NOTE 17) OVER 50u"/1.27u NI	D

mat'l code	surface	tolerance	projection	product family
ISD 1302	ISD 405	ISD 1101	MM	QUICKIE
tr ecn no	dr	date	angles	title
			linear	HEADER, QUICKIE
			0+2°	SEA-HORSE, VERTICAL
			dr	sheet no
			M. CORNMANN	65863
			M. SMYK	sheet20 of 23size
			M. SMYK	A3
			M. SMYK	type Product Customer Drawing
sheet	revision			
index	sheet			

1 2 3 4 5 6

PRODUCT NO NOTE 12.13	SIZE	LATCH NOTE 8	DIM B	DIM D	TERMINAL PLATING	STYLE	PIN MISSING
65863-640	2x12	NO	1.100/ 27.94	.150/3.81	30u"/0.76u MIN (NOTE 17) OVER 50u"/1.27u Ni	D	NONE
-641	2x12	STD	1.100/ 27.94				
-642	2x15	NO	1.400/ 35.56				
-643	2x15	STD	1.400/ 35.56				
-644	2x30	NO	2.900/ 73.66				
-645	2x30	STD	2.900/ 73.66				
-646	2x25	STD	2.400/ 60.96				
-647	2x5	STD	.400/ 10.16			A	
-648	2x7	STD	.600/ 15.24			C	
-649	2x13	STD	1.120/ 30.48			D	
-650	2x17	STD	1.600/ 40.64			D	
-651	2x5	NO	.400/ 10.16			A	
-652	2x7	NO	.600/ 15.24			C	
-653	2x13	NO	1.120/ 30.48			D	
-654	2x17	NO	1.600/ 40.64	.150/3.81		D	
-655	2x5	STD	.400/ 10.16	.175/4.45		A	
-656	2x7		.600/ 15.24			C	
-657	2x13		1.120/ 30.48			D	
-658	2x17	STD	1.600/ 40.64	.175/4.45		D	
-659	2x5	NO	.400/ 10.16	.250/6.35		A	
-660	2x7	LP	.600/ 15.24	.236/5.99	30u"/0.76u MIN (NOTE 17) OVER 50u"/1.27u Ni	C	NONE
-715	2x8	LP	.700/ 17.78	.150/3.81	30u"/0.76u MIN (NOTE 17) OVER 50u"/1.27u Ni	D	3
-716	2x8	LP	.700/ 17.78	.150/3.81	30u"/0.76u MIN (NOTE 17) OVER 50u"/1.27u Ni	D	14
-717	2x20	LP	1.900/48.26	.150/3.81	30u"/0.76u MIN (NOTE 17) OVER 50u"/1.27u Ni	D	20
-717S	2x20	LP	1.900/48.26	.150/3.81	30u"/0.76u MIN (NOTE 17) OVER 50u"/1.27u Ni	D	20
-733	2x17	LP	1.600/ 40.14	.105/2.67	50u"/1.27u MIN (NOTE 17) OVER 50u"/1.27u Ni	D	5
-734	2x17	STD	1.600/ 40.64	.105/2.67	50u"/1.27u MIN (NOTE 17) OVER 50u"/1.27u Ni	D	5
-735	2x10	LP	.900/ 22.86	.150/3.81	30u"/0.76u MIN (NOTE 17) OVER 50u"/1.27u Ni	D	16
-736	2x10	LP	.900/ 22.86		30u"/0.76u MIN (NOTE 17) OVER 50u"/1.27u Ni	D	19
-737	2x5	LP	.400/ 10.16		30u"/0.76u MIN (NOTE 17) OVER 50u"/1.27u Ni	A	10
-738	2x20	LP	1.900/48.26		30u"/0.76u MIN (NOTE 17) OVER 50u"/1.27u Ni	D	8
-739	2x25	LP	2.400/60.96			D	25
-740	2x12	LP	1.100/ 27.94			D	20
-741	2x17	LP	1.600/ 40.64			D	5
-741S	2x17	LP	1.600/ 40.64			D	5
-742	2x5	LP	.400/ 10.16			A	2
65863-743	2x17	LP	1.600/ 40.64	.150/3.81	30u"/0.76u MIN (NOTE 17) OVER 50u"/1.27u Ni	D	3

NOTE 18		NOTE 18	
---------	--	---------	--

mat'l code	sur face	tolerance	projection	product family
ltr ecn no	ISD 1302	ISO 1101	MM	QUICKIE
date	tolerance unless otherwise specified	MM/10/1403		
angles	linear	MM/10/1403		
0±2°	linear	MM/10/1403		
dr	M. CORNMANN	8/21/90		
engr	M. SMYK	8/21/90		
chr	M. SMYK	8/21/90		
pppd	M. SMYK	8/21/90		
sheet	revision			
index	sheet			

form: A3-2016-02-24 1 2 3 4 5 6

PDS: Rev: B6

STATUS: Released Printed: Jan 23, 2017

PRODUCT NO NOTE	SIZE	LAUNCH NOTE	DIM B	DIM D	TERMINAL PLATING	STYLE	MISSING PIN
65863-744 NOTE 12,13	2x17	LP	1.600/ 40.64	.150/3.81	30u"/0.76u MIN (NOTE 17) OVER 50u"/1.27u NI	D	3, 5
65863-744S	2x17	LP	1.600/ 40.64	.150/3.81	30u"/0.76u MIN (NOTE 17) OVER 50u"/1.27u NI	D	3, 5
							NOTE 18
65863-843	2x5	N/A	.400/ 10.16	.120/3.05	15u"/0.38u MIN (NOTE 17) OVER 50u"/1.27u NI	A	
-844	2x7		.600/ 15.24			C	
-845	2x10		.900/ 22.86			D	
-846	2x15		1.400/ 35.56				
-847	2x17		1.600/ 40.64				
-848	2x20		1.900/ 48.26				
-849	2x25		2.400/ 60.96				
-850	2x30	N/A	2.900/ 73.66			D	
-851	2x5	STD	.400/ 10.16			A	
-852	2x7		.600/ 15.24			C	
-853	2x10		.900/ 22.86			D	N/A
-854	2x15		1.400/ 35.56				
-855	2x17		1.600/ 40.64				
-856	2x20		1.900/ 48.26				
-857	2x25		2.400/ 60.96				
-858	2x30	STD	2.900/ 73.66			D	
-859	2x5	L/P	.400/ 10.16			A	
-860	2x7		.600/ 15.24			C	
-861	2x10		.900/ 22.86			D	
-861S	2x10		.900/ 22.86			D	NOTE 18
-862	2x15		1.400/ 35.56				
-863	2x17		1.600/ 40.64				
-864	2x20		1.900/ 48.26				
-865	2x25		2.400/ 60.96				
65863-866	2x30	L/P	2.900/ 73.66	.120/3.05		D	
65863-867S	2x12	L/P	1.100/ 27.94	.105/2.67	15u"/0.38u MIN (NOTE 17) OVER 50u"/1.27u NI	D	24
65863-868S	2x12	L/P	1.100/ 27.94	.105/2.67	30u"/0.76u MIN (NOTE 17) OVER 50u"/1.27u NI	D	24

mat'l code		surface		tolerance		projection		product family	
ltr	ecn no	dr	date	ISO 1302	ISO 1101	ASME Y14.5	MM	QUICKIE	QUICKIE
tolerances unless otherwise specified		angles		linear		scale 1:1		title	
0±2°		M. CORNMANN 8/21/90		M. CORNMANN 8/21/90		Amphenol FCI		HEADER, QUICKIE SEA-HORSE, VERTICAL	
engr		M. SMYK 8/21/90		engr		M. SMYK 8/21/90		sheet no	
chr		M. SMYK 8/21/90		chr		M. SMYK 8/21/90		65863	
pppd		M. SMYK 8/21/90		pppd		M. SMYK 8/21/90		sheet of size	
sheet		revision		sheet		sheet		A3	
index		sheet		index		sheet		Drawing	

PRODUCT NO NOTE	SIZE	LAUNCH NOTE	DIM B	DIM D	TERMINAL PLATING	STYLE
65863-049P	2x5	STD	.400/10.160	.105/ 2.67	30u"/0.76u MIN (NOTE 17) OVER 50u"/1.27u Ni	A
65863-055P	2x7	STD	.600/15.240	.105/ 2.67	30u"/0.76u MIN (NOTE 17) OVER 50u"/1.27u Ni	C
65863-061P	2x8	STD	.700/17.780	.105/ 2.67	30u"/0.76u MIN (NOTE 17) OVER 50u"/1.27u Ni	D
65863-067P	2x10	STD	.900/22.860	.105/ 2.67	30u"/0.76u MIN (NOTE 17) OVER 50u"/1.27u Ni	D
65863-073P	2x13	STD	1.200/30.480	.105/ 2.67	30u"/0.76u MIN (NOTE 17) OVER 50u"/1.27u Ni	D
65863-079P	2x17	STD	1.600/40.640	.105/ 2.67	30u"/0.76u MIN (NOTE 17) OVER 50u"/1.27u Ni	D
65863-085P	2x20	STD	1.900/48.260	.105/ 2.67	30u"/0.76u MIN (NOTE 17) OVER 50u"/1.27u Ni	D
65863-091P	2x25	STD	2.400/60.960	.105/ 2.67	30u"/0.76u MIN (NOTE 17) OVER 50u"/1.27u Ni	D
65863-203P	2x20	LP	1.900/48.260	.105/ 2.67	30u"/0.76u MIN (NOTE 17) OVER 50u"/1.27u Ni	D
65863-079F	2x17	STD	1.600/40.640	.105/ 2.67	30u"/0.76u MIN (NOTE 17) OVER 50u"/1.27u Ni	D
65863-081F	2x17	STD	1.600/40.640	.150/ 3.81	30u"/0.76u MIN (NOTE 17) OVER 50u"/1.27u Ni	D

mat'l code		surface		tolerance		projection		product family	
ISD 1302		ISD 1101		QUICKIE		QUICKIE		QUICKIE	
tolerances unless otherwise specified		linear		angular		MM		title	
0±2°		MIL/IN		MIL/IN		SCALE 1:1		HEADER, QUICKIE	
M. CORNMANN		8/21/90		M. SMYK		8/21/90		SEA-HORSE, VERTICAL	
M. SMYK		8/21/90		M. SMYK		8/21/90		sheet23 of 23 size	
M. SMYK		8/21/90		M. SMYK		8/21/90		65863	
M. SMYK		8/21/90		M. SMYK		8/21/90		sheet23 of 23 size	
sheet		revision		type		Product		Customer	
Index		sheet		Drawing		Drawing		Drawing	