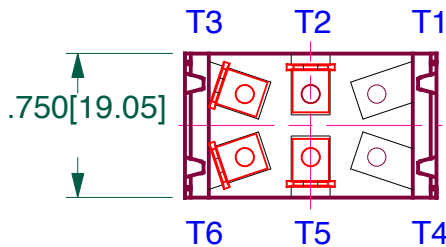
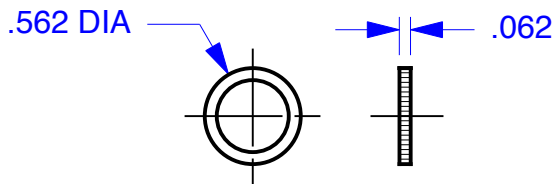
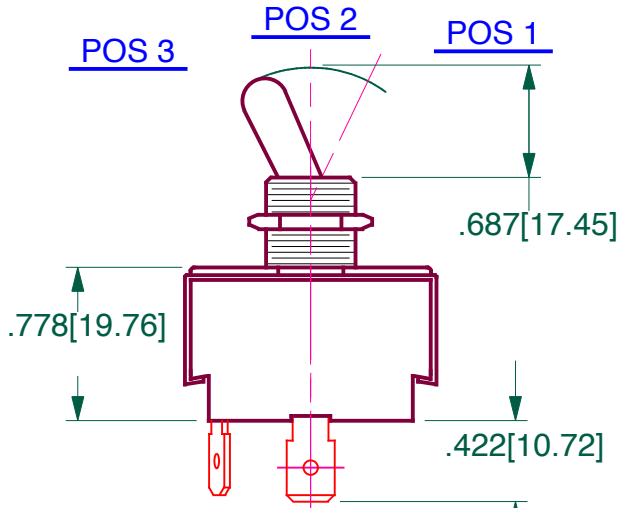
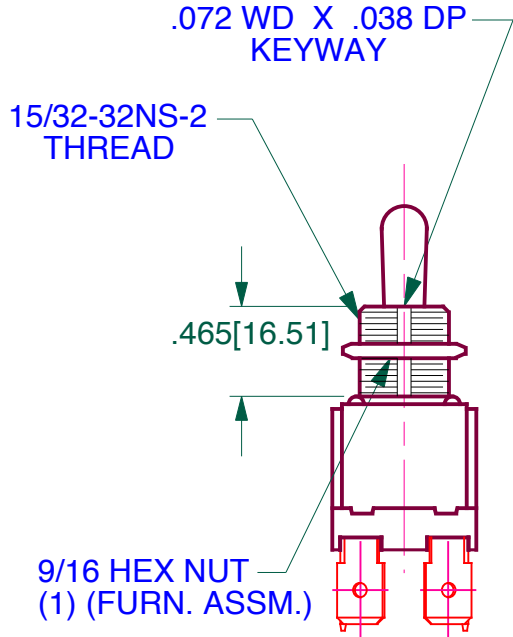
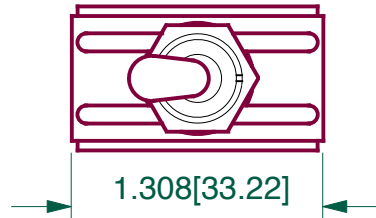


DO NOT SCALE DRAWING WORK TO FIGURE



DWG NO. 6GG5B-73		REV. 01
LET	REVISIONS	DATE
01	RELEASED	3-2-09

<u>RATING:</u>	UL & CSA
10AMP	<u>250VAC</u>
15AMP	125VAC
1/2HP	<u>250VAC</u>

<u>OPERATES:</u>		
<u>POSITIONS OF TOGGLE</u>		
<u>POS 1</u>	<u>POS 2</u>	<u>POS 3</u>
(ON)	ON	OFF
T2 TO 3	T2 TO 3	
T5 TO 6		

- NOTES:
- 1- KEYWAY INDICATES DOWN POSITION
  - 2- TOGGLE, BUSHING, RING NUT & HEX NUT ARE NICKEL PLATED BRASS
  - 3- .250 TAB TERMINALS

DIMENSIONS SUBJECT TO CHANGE WITHOUT NOTICE

FINISH \_\_\_\_\_



**PROPRIETARY NOTE:**

NOTICE TO ALL PERSONS RECEIVING THIS DRAWING. THIS DOCUMENT IS THE PROPERTY OF CARLING TECHNOLOGIES, INC. AND IS NOT TO BE DISCLOSED, REPRODUCED IN WHOLE OR IN PART OR USED FOR MANUFACTURING PURPOSES BY ANYONE WITHOUT THE CONSENT OF CARLING TECHNOLOGIES, INC.

UNSPECIFIED TOLERANCES

FRAC. ±1/64 X.XXX ±.015  
ANGLES ±1°

PROJECTIONS



DIMENSIONS IN [mm]

TOOL NO. \_\_\_\_\_

DR BY **KRAMARZ** DATE **3-2-09**

CHK BY **KOERNER** DATE **3-2-09**

APPD BY \_\_\_\_\_ DATE \_\_\_\_\_

TITLE **G SERIES DOUBLE POLE**

SIZE **A** DWG NO. **6GG5B-73** REV. **01**

USED ON \_\_\_\_\_ SCALE: **NONE** SHT **1** OF **1**