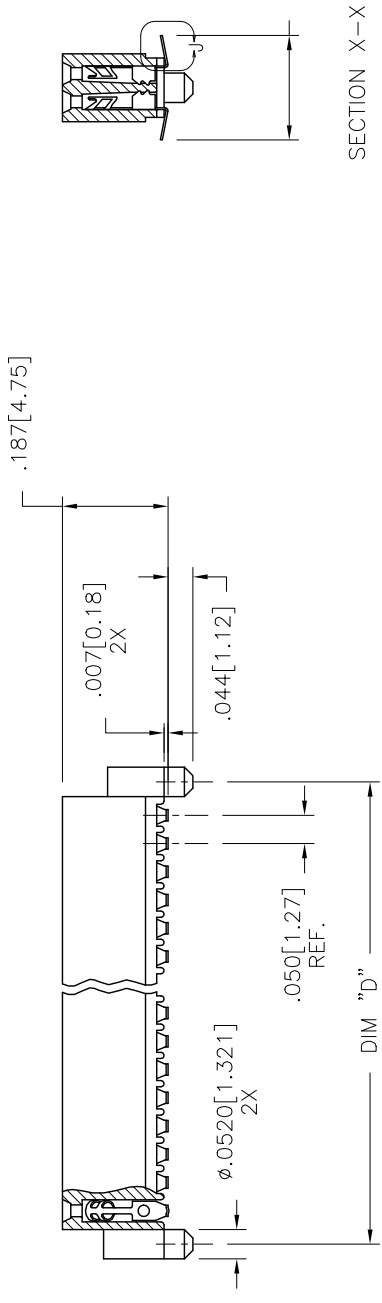
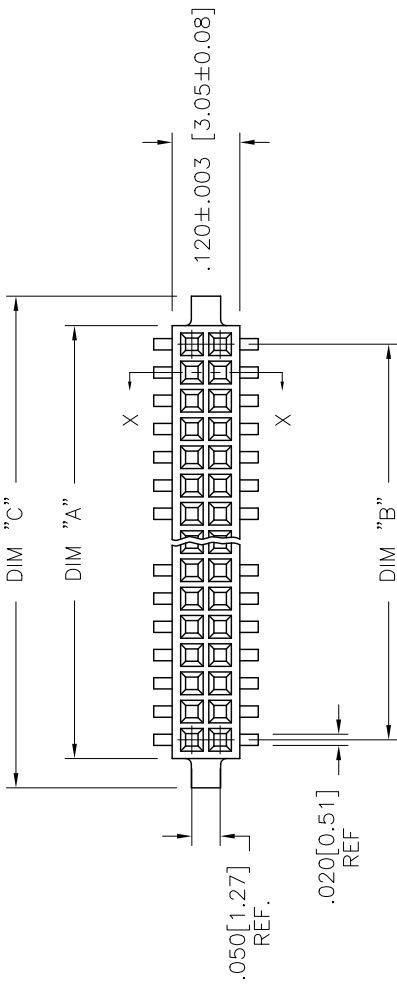
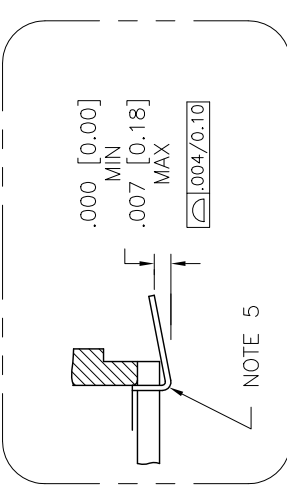


PRODUCT NUMBER
SEE TABLE



SECTION X-X

.185±.015 [4.7±0.38]



DETAIL J
SCALE 10/1

mat'l. code		surface		tolerance		projection		product family	
ISO 1302		ISO 406		ISO 1101		INCH/MM		RIB CAGE	
tolerances unless otherwise specified		linear		xxx ±.01/.3		scale 3:1		title	
angles		σ±2°		xxx ±.005/.13				.050cc VERT. CARD CONN.	
dr		M. CLOUSER		5/25/91				SURF. MT. W/LOC. FEATURES	
leng		B. BARUFFALO		5/25/91				dwg no 87023 sheet 1 of 4 size A3	
chr		B. BARUFFALO		5/25/91				type Product Customer Drawing	
app'd		B. BARUFFALO		5/25/91					
sheet		AJ		AJ					
revision		AJ		AJ					
sheet		1		2		3		4	
index									

PRODUCT NO.
87023 - XXX

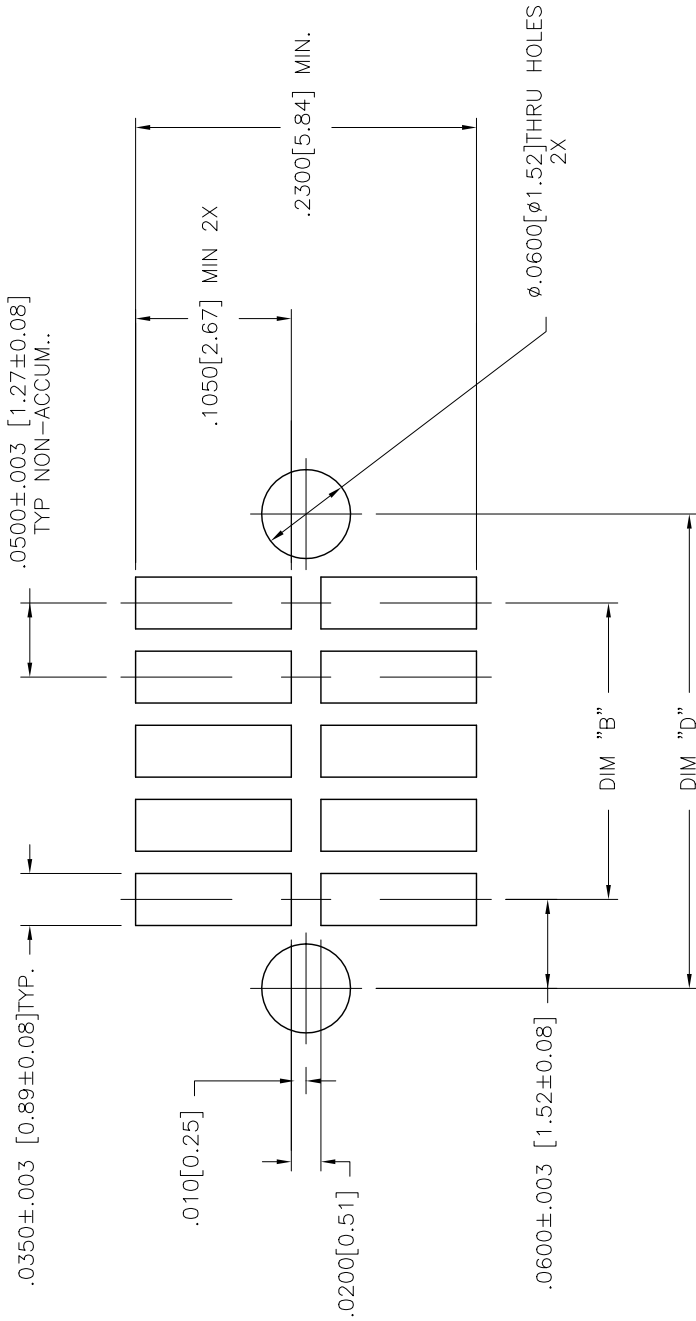
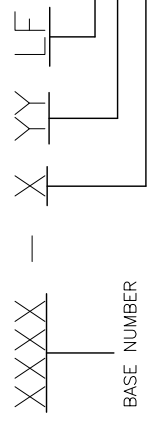


FIGURE A
RECOMMENDED
P.C.B. LAYOUT

mat'l. code		surface		tolerance		projection		product family	
AJ		ISO 1302		ISO 406		1st angle		RIB CAGE	
itr		tolerances unless otherwise specified		xxx ±.01/.3		INCH/MM		title	
ecn		linear		xxx ±.005/.13		scale 3:1		.050cc VERT. CARD CONN.	
no		dr		M. CLOUSER 5/25/91		sheet 2 of 4		size	
dr		chr		B. BARUFFALO 5/25/91		A3		87023	
date		app'd		B. BARUFFALO 5/25/91		type		Product Customer Drawing	
revision		sheet		revision		sheet		index	

PRODUCT NO. NOTE 8	SIZE	DIM A	DIM B	DIM C	DIM D	SPECIAL PACKAGING	TAPE WIDTH PITCH	PIECES PER REEL
87023-605	2 X 5	.266/6.756	.200/5.08	.370/9.398	.3200/8.128	NOTE 6	24mm 12mm	750
-610	2 X 10	.516/13.106	.450/11.43	.620/15.748	.5700/14.478	NOTE 6	24mm 12mm	750
-615	2 X 15	.766/19.456	.700/17.78	.870/22.098	.8200/20.828	NOTE 6	44mm 12mm	500
-620	2 X 20	1.016/25.806	.950/24.13	1.120/28.448	1.0700/27.178	NOTE 6 & 7	44mm 12mm	500
-625	2 X 25	1.266/32.156	1.200/30.48	1.370/34.798	1.3200/33.528	NOTE 6	56mm 12mm	500
-630	2 X 30	1.516/38.506	1.450/36.83	1.620/41.148	1.5700/39.878	NOTE 6 & 7	56mm 12mm	500
-635	2 X 35	1.766/44.856	1.700/43.18	1.870/47.498	1.8200/46.228	NOTE 6	72mm 12mm	500
-640	2 X 40	2.016/51.206	1.950/49.53	2.120/53.848	2.0700/52.578	NOTE 6 & 7	72mm 12mm	500
-645	2 X 45	2.266/57.556	2.200/55.88	2.370/60.198	2.3200/58.928	NOTE 6	72mm 12mm	500
-650	2 X 50	2.516/63.906	2.450/62.23	2.620/66.548	2.5700/65.278	NOTE 6	88mm 12mm	500
-905	2 X 5	.266/6.756	.200/5.08	.370/9.398	.3200/8.128	NO	—	—
-910	2 X 10	.516/13.106	.450/11.43	.620/15.748	.5700/14.478	NO	—	—
-915	2 X 15	.766/19.456	.700/17.78	.870/22.098	.8200/20.828	NO	—	—
-920	2 X 20	1.016/25.806	.950/24.13	1.120/28.448	1.0700/27.178	NO	—	—
-925	2 X 25	1.266/32.156	1.200/30.48	1.370/34.798	1.3200/33.528	NO	—	—
-930	2 X 30	1.516/38.506	1.450/36.83	1.620/41.148	1.5700/39.878	NO	—	—
-935	2 X 35	1.766/44.856	1.700/43.18	1.870/47.498	1.8200/46.228	NO	—	—
-940	2 X 40	2.016/51.206	1.950/49.53	2.120/53.848	2.0700/52.578	NO	—	—
-945	2 X 45	2.266/57.556	2.200/55.88	2.370/60.198	2.3200/58.928	NO	—	—
87023-950	2 X 50	2.516/63.906	2.450/62.23	2.620/66.548	2.5700/65.278	NO	—	—



BASE NUMBER

LEAD FREE OPTION NOTE 8
NO. POSITION
PLATING NUMBER NOTE 3

NOTES:

- HOUSING MATERIAL: CLASS FILLED THERMOPLASTIC FLAME RETARDANT PER UL 94V-0
COLOR: NATURAL
- TERMINAL MATERIAL: BeCu
- TERMINAL PLATING: -6XXLF: 30u"/.76um MIN HARD GOLD OR GXT OVER NI ON CONTACT ZONES.
100u"/2.54um MIN PURE TIN OVER NI IN SOLDERING ZONES, OTHERWISE GOLD FLASH OR UNPLATED.
-9XXLF: 60u"/1.52um MIN HARD GOLD ON CONTACT ZONES,
100u"/2.54um MIN PURE TIN OVER NI OVER NI IN SOLDERING ZONES, OTHERWISE GOLD FLASH OR UNPLATED.
- APPLICATION INFORMATION:
A. RECOMMENDED MOUNTING PAD PATTERN IS SHOWN IN FIGURE "A".
B. MATING PINS TO BE .0176/0.447 TO .0181/0.459 DIA.
C. MATING PIN TIPS TO BE IN TRUE POSITION TO MATING GRID WITHIN .006/0.15 DIA.
D. SUGGESTED MATING PIN LENGTH .130/3.30 ±.010/0.25.
- LEAD TIPS TO BE ABOVE HEEL UP TO .007/0.18 MAX. COPLANARITY TO BE MEASURED AT LOWEST POINT (HEEL).
- ADD "TR" TO END OF DASH NUMBER FOR TAPE AND REEL PACKAGED WITH CAP. TOOLED ONLY FOR NOTED CONNECTORS.
- ADD "CT" TO END OF DASH NUMBER FOR CONNECTOR WITH CAP FOR VACUUM PICKUP IN TUBE.
- ADD LF SUFFIX AT THE END OF PART NUMBER FOR LEAD FREE OPTION.
- THE HOUSING WILL WITHSTAND EXPOSURE TO 260°C PEAK TEMPERATURE FOR 20 SECONDS IN A CONVECTION, INFRA-RED OR VAPOR PHASE REFLOW OVEN. SEE APPLICATION NOTE/PROCEDURES IF THEY ARE AVAILABLE.
- THIS PRODUCT MEETS EUROPEAN UNION DIRECTIVES AND OTHER COUNTRY REGULATION AS DESCRIBED IN GS-22-008.
- PRODUCT SPEC PER BUS-12-087.

matl. code	surface ISO 1302	tolerance ISO 406 ISO 1101	projection	product family
itr	angles tolerances unless otherwise specified	linear xx ±.01/3 xxx ±.005/.13	INCH/MM	RIB CAGE
ecn no	σ±Z	xxxx ±.0020/.000	scale 3:1	title
dr	M. CLOUSER	5/25/91		.050cc VERT. CARD CONN.
engr	B. BARUFFALO	5/25/91		SURF. MT. W/LOC. FEATURES
chr	B. BARUFFALO	5/25/91		dwg no sheet 3 of 4 size
appd	B. BARUFFALO	5/25/91		87023 A3
sheet index	revision sheet			type Product Customer Drawing

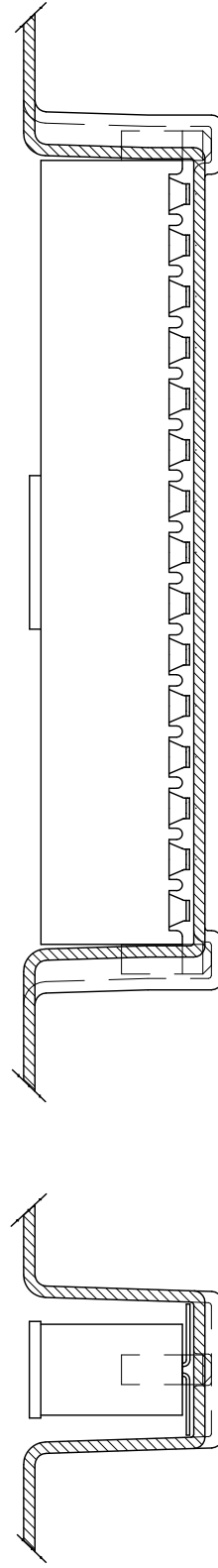
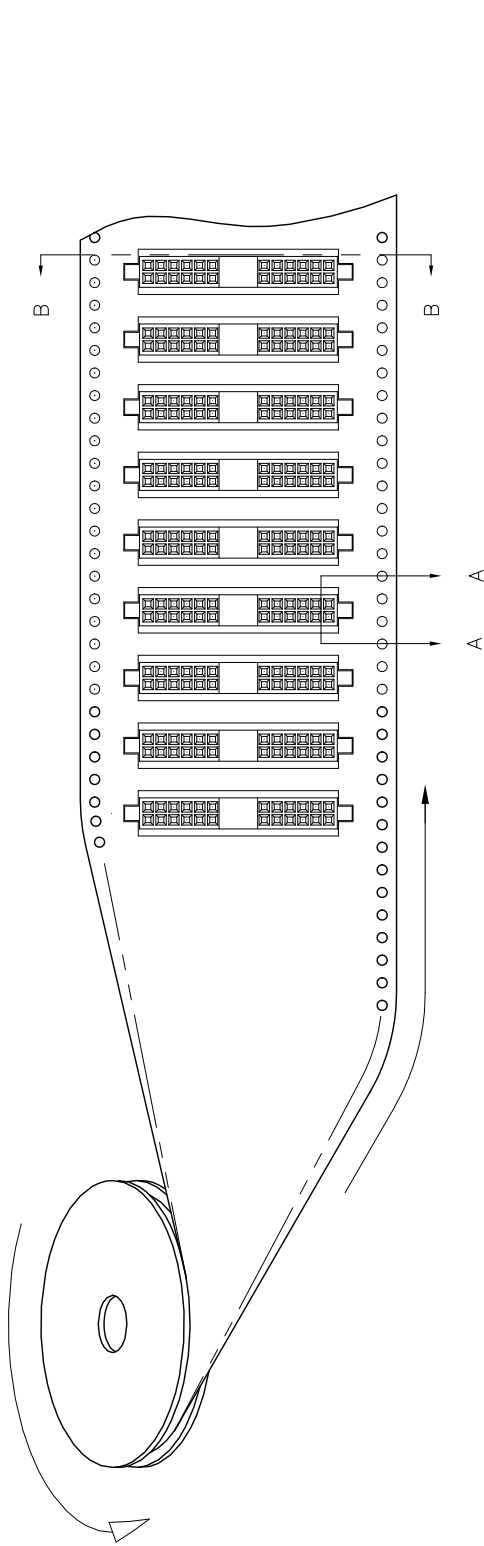


PRODUCT NUMBER
SEE TABLE

REFERENCE ONLY

TAPE WIDTH'S 32mm AND ABOVE HAS BOTH FEED TRACKS,
BELOW 32mm HAS TOP FEED TRACK ONLY.

UNREELING
DIRECTION



SECTION A-A

SECTION B-B

mat'l. code		surface		tolerance		projection		product family	
AJ		ISO 1302		ISO 406		FIRST ANGLE		RIB CAGE	
tr		ecn		no		date		title	
								.050cc VERT. CARD CONN.	
								SURF. MT. W/LOC. FEATURES	
								dwg no 87023	
								sheet 4 of 4	
								size A3	
sheet		revision		index		sheet		type	
								Product Customer Drawing	

