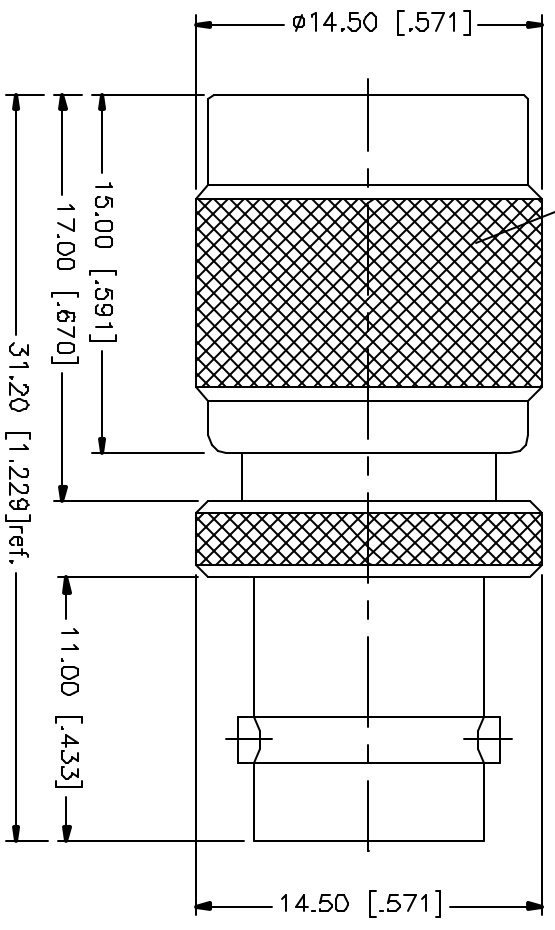


REV.	DATE	DESCRIPTION
A	03/27/05	UPDATE DRAWING FORMAT

7/16-28UNEF-2B



NO.	DESCRIPTION	MATERIAL	FINISH	QTY	UNIT	SCALE
1	CONTACT PIN	PHOS. BRONZE	GOLD	1		
2	INSULATOR BODY	TEFLON BRASS	NATURAL NICKEL	1		
3						
4						
5						
6						
7						
8						

<p>MAXIMUM DIMENSIONS SHOWN ARE THE MAXIMUM DIMENSIONS FOR THE PART NUMBER AND FOR DIMENSION REFERENCE ONLY.</p> <p>TOLERANCES FOR MILLIMETER AND INCH DIMENSIONS:</p> <p>0.5 - 30mm ± 0.20mm</p> <p>30 - 120mm ± 0.50mm</p> <p>MAXIMUM DIMENSIONS SHOWN ARE MAXIMUMS FOR MILLIMETER DIMENSIONS:</p> <p>.020 - .315 = ± 0.007"</p> <p>.315 - 1.180 = ± 0.015"</p> <p>1.180 - 4.724 = ± 0.020"</p>	<p>APPROVALS</p> <p>DRAWN: G.R.S. DATE: 03/27/05</p> <p>CHECKED: _____</p> <p>ISSUED: _____</p> <p>SHEET: 1 OF 1</p>	<p>PART DESCRIPTION</p> <p>TNC MALE TO BNC FEMALE ADAPTER</p> <p>PART NO.: 242149</p>
--	--	--

<p>ECO FILE: C:/242/242149.DWG</p>	<p>DWG. NO.: 242149.DWG</p>	<p>REV: A</p>	<p>SITE: A</p>	<p>SCALE: NA</p>
------------------------------------	-----------------------------	---------------	----------------	------------------

Amphenol Connex