



1 2 3 4 5 6

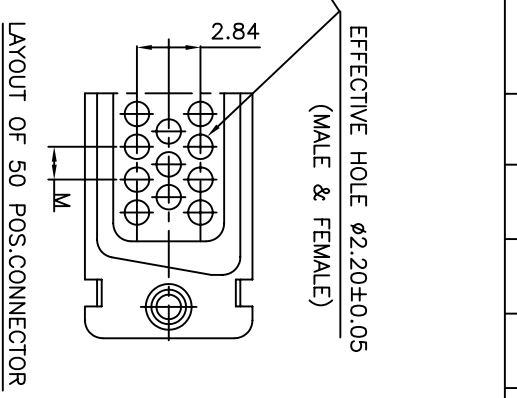
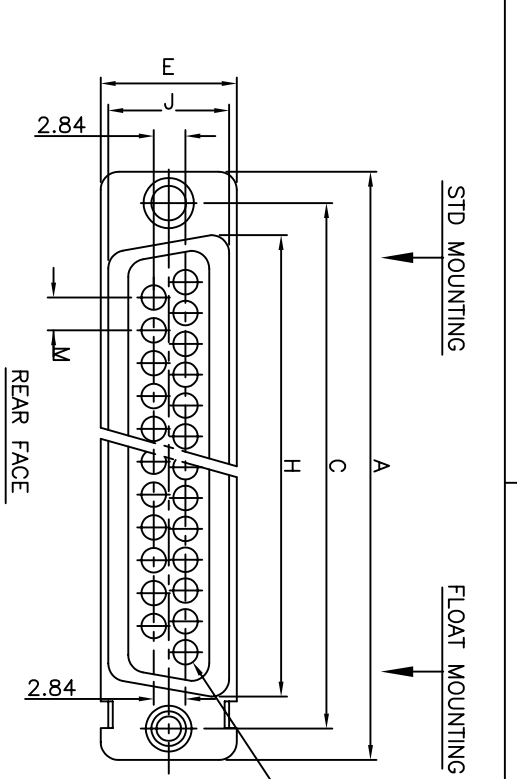
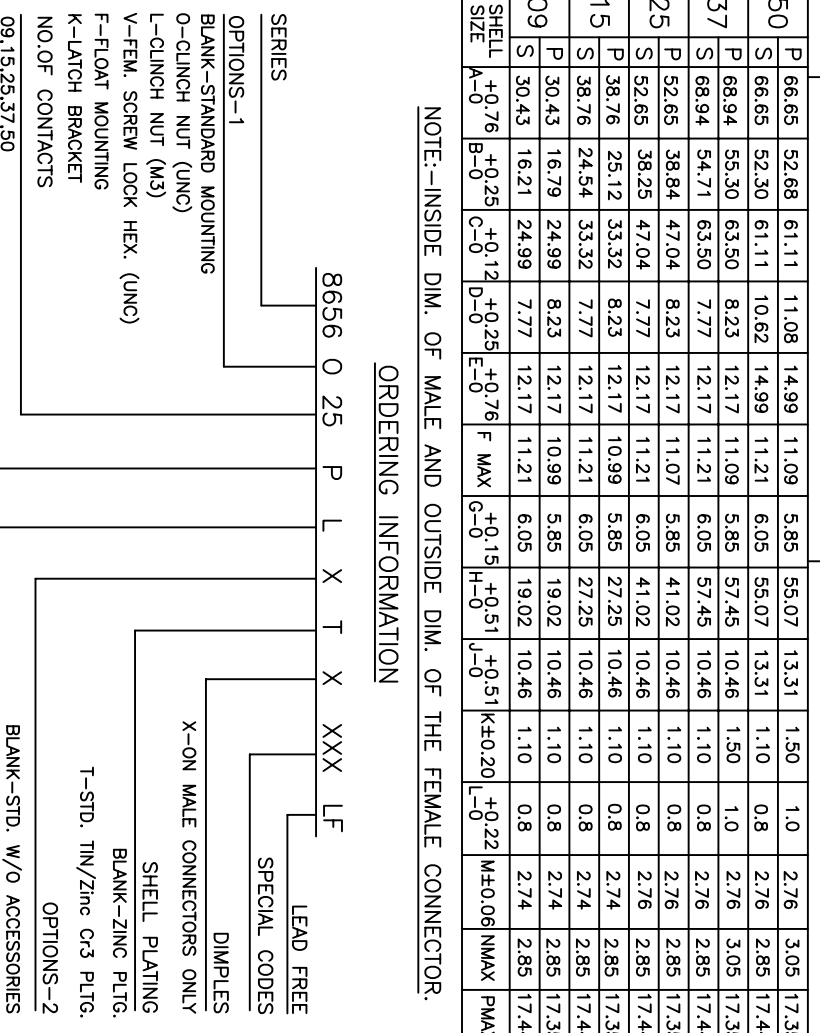


TABLE 2

SHELL TYPE OF MOUNTING	TYPE OF MOUNTING	POSITIONS		DIMENSIONS	
		FRONT	REAR	FRONT	REAR
09	STD	FRONT	REAR	23.00	21.30
		FRONT	REAR	13.80	11.40
	FLOAT	FRONT	REAR	13.80	11.40
		FRONT	REAR	13.80	11.40
15	STD	FRONT	REAR	22.20	20.50
		FRONT	REAR	13.00	11.40
	FLOAT	FRONT	REAR	13.00	11.40
		FRONT	REAR	13.00	11.40
25	STD	FRONT	REAR	44.30	42.50
		FRONT	REAR	13.80	11.40
	FLOAT	FRONT	REAR	13.80	11.40
		FRONT	REAR	13.80	11.40
37	STD	FRONT	REAR	59.10	57.20
		FRONT	REAR	13.80	11.40
	FLOAT	FRONT	REAR	13.80	11.40
		FRONT	REAR	13.80	11.40
50	STD	FRONT	REAR	86.65	84.75
		FRONT	REAR	14.10	11.10
	FLOAT	FRONT	REAR	14.10	11.10
		FRONT	REAR	14.10	11.10



TECHNICAL SPECIFICATIONS

SHELLS : TIN/CADMIUM/ZINC PLATED STEEL

INSULATOR MATERIAL : SELF EXTINGUISHING THERMOPLASTIC- TO UL CLASS 94 V0

THE HOUSING WILL WITHSTAND EXPOSURE TO 260-265°C IF WE USE PROTECTIVE ADHESIVE (Type Kapton or Teflon) OR PROTECTIVE METALLIC DEVICE

CONTACTS DIA ON ACTIVE AREA : $\phi 1$ MM.

CONTACTS MATERIAL : COPPER ALLOY

CONTACT PLATING : GOLD / GXT OVER NICKEL (ACTIVE ZONE)

FOR LEAD FREE PLATING : TIN OVER NICKEL (TERMINATION ZONE)

OPERATING TEMPERATURE : -55°C TO $+125^{\circ}\text{C}$

OPERATING CURRENT : 5 A PER CONTACT

CONTACT RESISTANCE : $< 10\text{m}\Omega$

INSULATION RESISTANCE : > 5000 M Ω IN AMBIENT CONDITIONS.

MAXIMUM VOLTAGE : 1000 V.r.m.s

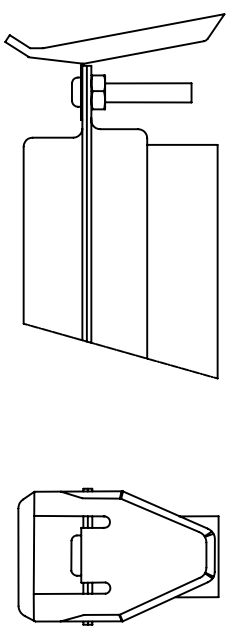
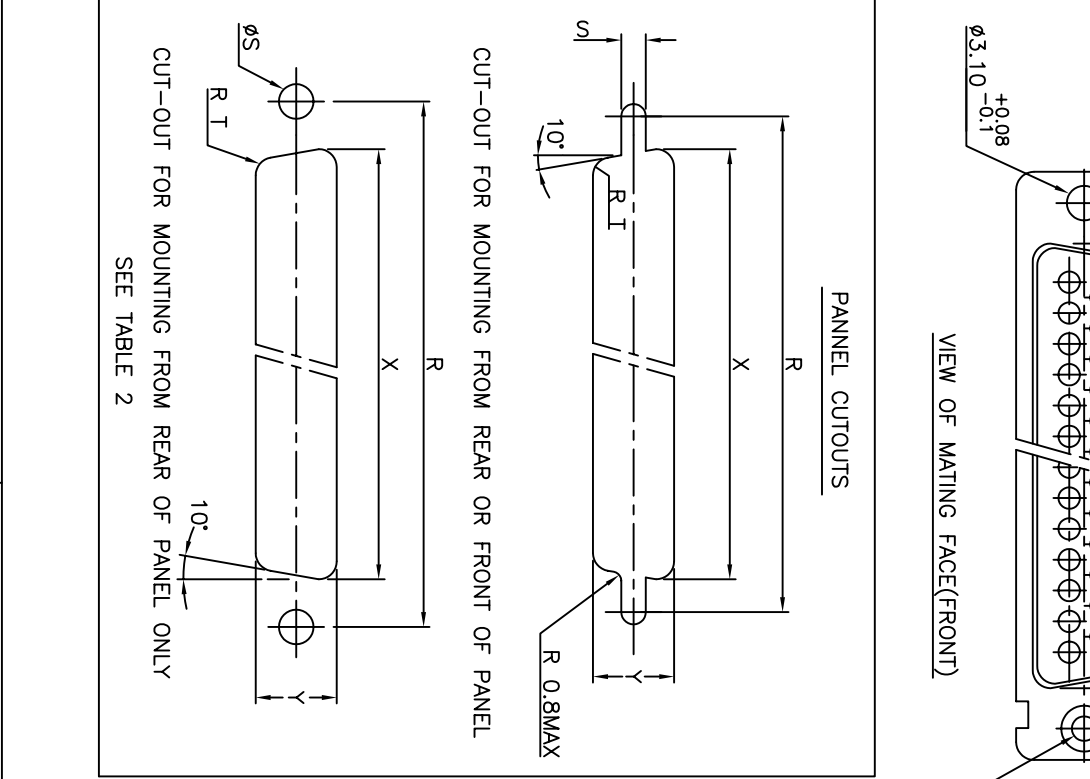
MECHANICAL ENDURANCE : 200 MATINGS (CODE 64)

DAMP HEAT : 21 DAYS

WIRE SIZE : AWG 20/24 OR AWG 24/28

CONTACTS : CRIMP REMOVABLE

MAX DIA OF WIRE : 1.52mm (AWG 20/24) 1.02mm (AWG 24/28)



"This LF product meets European Union Directives and other country regulations as described in GS-22-008"

Packaging as per GS-14-920

mat'l. code		surface	tolerance	projection	product family
ISO 1302	ISO 406 ISO 1101	ISO 1302	ISO 406 ISO 1101	MM	D-SUB CRIMP CONNECTOR
ISO 1302	ISO 406 ISO 1101	ISO 1302	ISO 406 ISO 1101	MM	D-SUB CRIMP CONNECTOR

ltr	ecn no	dr	date	tolerances unless otherwise specified	angles	linear	scdole	title
E	106-0074	EVJ	2006/06/08					D-SUB CRIMP CONNECTOR
F	111-0003	AMR	2011-1-06					D-SUB CRIMP CONNECTOR
F1.1	-	PK	2012/05/29					D-SUB CRIMP CONNECTOR
G	ELX-1-01185	PK	2012/06/01					D-SUB CRIMP CONNECTOR
		dr		Mini K Vandanaiah				D-SUB CRIMP CONNECTOR
		enr		George V Joseph				D-SUB CRIMP CONNECTOR
		chr		Abhilash M R				D-SUB CRIMP CONNECTOR
		appd		Sudhir Varma				D-SUB CRIMP CONNECTOR

sheet index	revision	sheet	1	2	3	4	5	6
	G							

dwg no	sheet 1 of 1	size
C-DSUB-0071		A3

type	Product Customer	Drawing