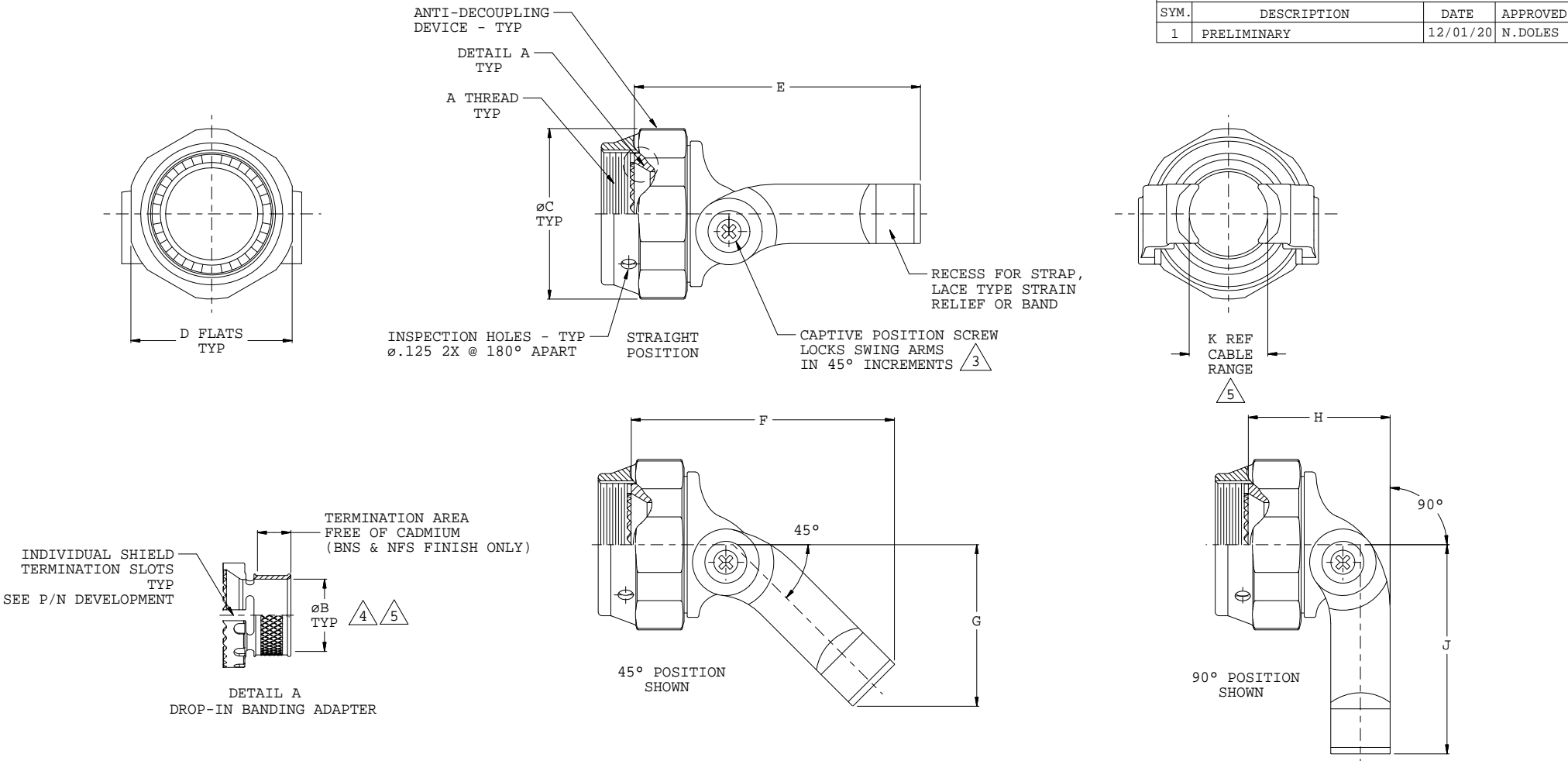
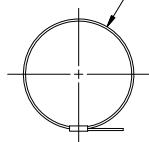


REVISIONS			
SYM.	DESCRIPTION	DATE	APPROVED
1	PRELIMINARY	12/01/20	N.DOLES



BAND SUPPLIED WITH ASSEMBLY  
DASH NO 08-13 - P/N 601-061  
DASH NO 14-25 - P/N 601-065



US PATENTS: 6419519, 9413116, 9627800

THIS COPYRIGHTED DOCUMENT IS THE PROPERTY OF GLENAIR, INC. AND IS FURNISHED ON THE CONDITION THAT IT IS NOT TO BE DISCLOSED, REPRODUCED IN WHOLE OR IN PART, OR USED TO SOLICIT QUOTATIONS FROM COMPETITIVE SOURCES, OR USED FOR MANUFACTURE BY ANYONE OTHER THAN GLENAIR, INC. WITHOUT WRITTEN PERMISSION FROM GLENAIR, INC. THE INFORMATION HEREIN HAS BEEN DEVELOPED AT GLENAIR'S EXPENSE AND MAY BE USED FOR ENGINEERING EVALUATION AND INCORPORATION INTO TECHNICAL SPECIFICATIONS AND OTHER DOCUMENTS WHICH SPECIFY PROCUREMENT OF PRODUCTS FROM GLENAIR, INC.			
UNLESS OTHERWISE SPECIFIED DIMENSIONS ARE IN INCHES METRIC DIMENSIONS IN PARENTHESES ARE FOR REFERENCE ONLY	DRAWN N.DOLES 12/01/20	<b>GLENAIR, INC.</b> <small>CAD 2020</small> 1211 AIR WAY - GLENDALE - CALIFORNIA 91201	
	CHECK A.KEEP 12/01/20		
	ENGR N.DOLES 12/01/20	<b>COMPOSITE - FLEX SWING ARM, STRAIN RELIEF WITH DROP-IN BANDING ADAPTER</b>	
TOLERANCES: FRACTIONS $\pm 1/16$ DECIMALS .XX $\pm .03 (0.8)$ .XXX $\pm .015 (0.4)$ ANGLES $\pm 2^\circ$	<i>A.Keep</i> APPROVED	COMPOSITE - FLEX SWING ARM, STRAIN RELIEF WITH DROP-IN BANDING ADAPTER	REV. <b>1</b>
DO NOT SCALE THIS DRAWING	RELEASE DATE ORIGINAL RELEASE DATE	06324	SIZE <b>D</b>
B/F 20-2241 P/C 87	NON REPAIRABLE COMMERCIAL ITEM	SCALE N/A	WEIGHT N/A
		SHEET 1 OF 2	

