

MCSLPT4848C4DTR ✓ ACTIVE

Alcoswitch | Alcoswitch LPT

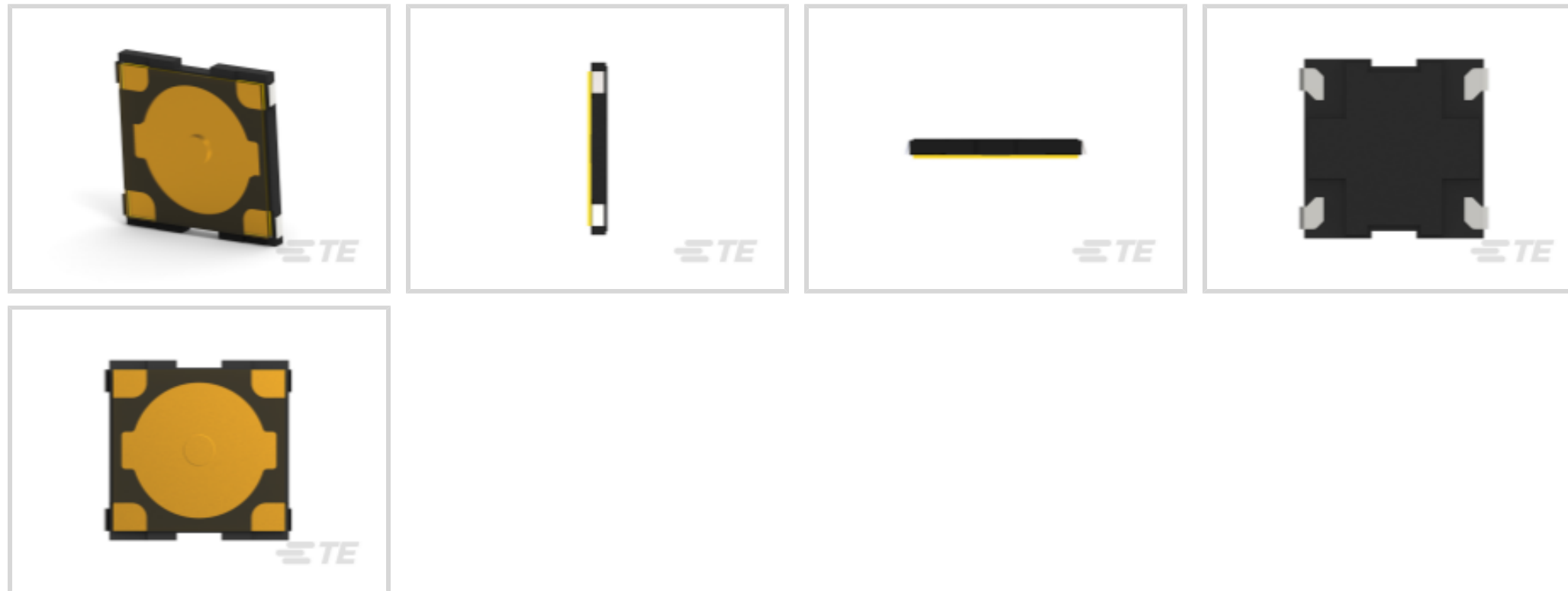
TE Internal #: 2337233-4

Alcoswitch LPT, Tactile Switches, Flush, Top Actuator Style, NO,
Stainless Steel, Silver, Low Profile, 50 mA, 12 VDC

[View on TE.com >](#)



Relays, Contactors & Switches > Switches > Tactile Switches



Actuator Style: **Flush, Top**

Operating Function: **NO**

Contact Base Material: **Stainless Steel**

Switch Contact Plating Material: **Silver**

Dust Proof: **No**

Features

Product Type Features

Product Type	Switch
Leg Style	J Style
Illuminated	No
Actuator Style	Flush, Top
Dust Proof	No

Configuration Features

Tactile Feel	Yes
ESD Grounding Terminal	Without
Ganged	No
Tactile	Yes
Operating Function	NO
Configuration (Pole-Throw)	Single Pole - Single Throw
Number of Actuators	1

Electrical Characteristics



Tactile Switch Voltage Rating	12 VDC
-------------------------------	--------

Body Features

Body Style	Horizontal
Case Color	Black
Actuator Force	260 g[9.171 oz]
Case Material	Thermoplastic
Actuator Profile	Flush
Actuator Material	Polyimide

Contact Features

Contact Base Material	Stainless Steel
Switch Contact Plating Material	Silver
Tactile Switch Contact Current Rating	50 mA

Termination Features

Termination Type	Printed Circuit Board
------------------	-----------------------

Mechanical Attachment

Tactile Switch Mounting Type	Surface Mount
Tactile Switch Mounting Angle	Vertical

Housing Features

Low Profile	Yes
Process Sealed	No

Dimensions

Switch Height	.5 mm[.022 in]
---------------	----------------

Usage Conditions

Temperature Rating	-30 – 80 °C
--------------------	-------------

Packaging Features

Packaging Method	Tape & Reel
------------------	-------------

Product Compliance

[For compliance documentation, visit the product page on TE.com>](#)

EU RoHS Directive 2011/65/EU	Compliant
EU ELV Directive 2000/53/EC	Compliant
China RoHS 2 Directive MIIT Order No 32, 2016	No Restricted Materials Above Threshold



EU REACH Regulation (EC) No. 1907/2006

Current ECHA Candidate List: JUL 2021 (219)

Candidate List Declared Against: JUL 2021 (219)

Does not contain REACH SVHC

Halogen Content

Not Yet Reviewed for halogen content

Solder Process Capability

Not reviewed for solder process capability

Product Compliance Disclaimer

This information is provided based on reasonable inquiry of our suppliers and represents our current actual knowledge based on the information they provided. This information is subject to change. The part numbers that TE has identified as EU RoHS compliant have a maximum concentration of 0.1% by weight in homogenous materials for lead, hexavalent chromium, mercury, PBB, PBDE, DBP, BBP, DEHP, DIBP, and 0.01% for cadmium, or qualify for an exemption to these limits as defined in the Annexes of Directive 2011/65/EU (RoHS2). Finished electrical and electronic equipment products will be CE marked as required by Directive 2011/65/EU. Components may not be CE marked. Additionally, the part numbers that TE has identified as EU ELV compliant have a maximum concentration of 0.1% by weight in homogenous materials for lead, hexavalent chromium, and mercury, and 0.01% for cadmium, or qualify for an exemption to these limits as defined in the Annexes of Directive 2000/53/EC (ELV). Regarding the REACH Regulation, the information TE provides on SVHC in articles for this part number is based on the latest European Chemicals Agency (ECHA) 'Guidance on requirements for substances in articles' posted at this URL: <https://echa.europa.eu/guidance-documents/guidance-on-reach>

Compatible Parts



TE Part # 2337234-1
TACT MICRO JB 4.6X4.4X0.55 P3.5 100GF



TE Part # 2337234-2
TACT MICRO JB 4.6X4.4X0.55 P3.5 160GF



TE Part # 2337234-3
TACT MICRO JB 4.6X4.4X0.55 P3.5 200GF



TE Part # 2337224-1
TACT ULTRA TB 2.6X1.6X0.55 160GF



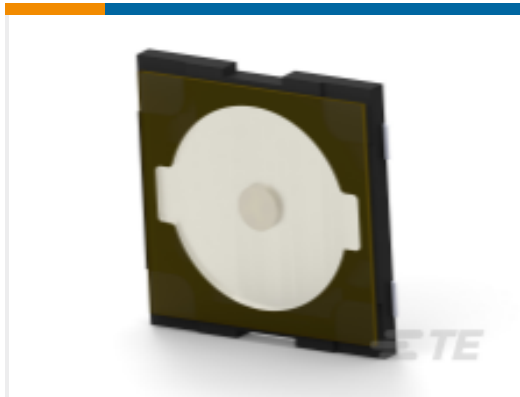
TE Part # 2337225-1
TACT ULTRA TB 2.8X1.9X0.6 160GF

Also in the Series | [Alcoswitch LPT](#)



Tactile Switches(52)

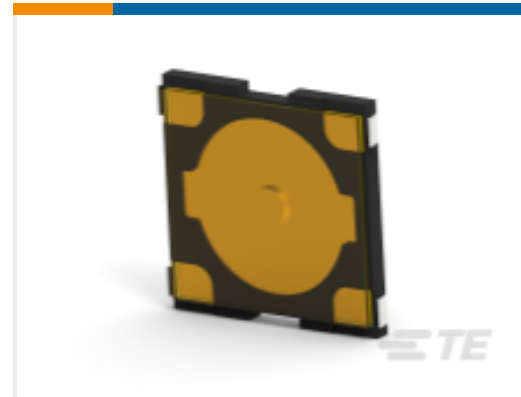
Customers Also Bought



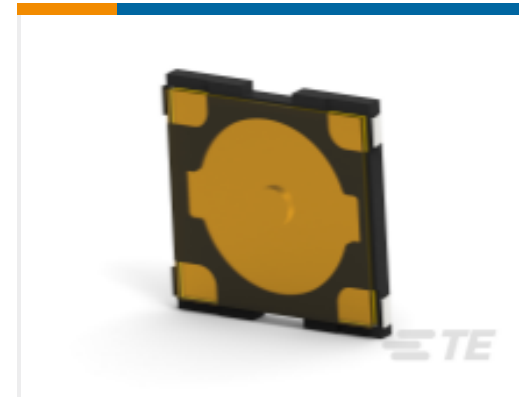
TE Part #2337232-4
TACT MICRO JB 4.8X4.8X0.55 P2.8
260GF



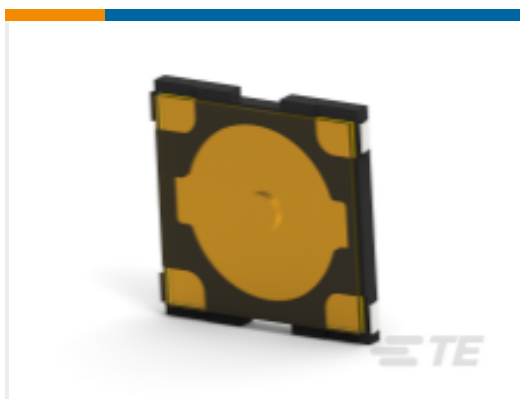
TE Part #2337232-5
TACT MICRO JB 4.8X4.8X0.55 P2.8
360GF



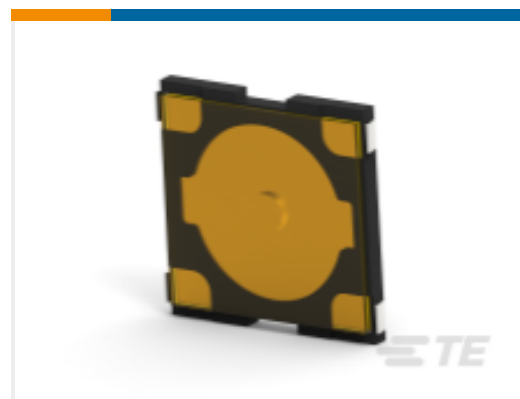
TE Part #2337233-1
TACT MICRO JB 4.8X4.8X0.55 P3.7
100GF



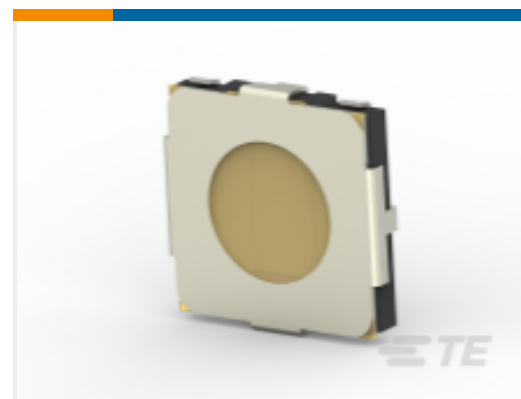
TE Part #2337233-2
TACT MICRO JB 4.8X4.8X0.55 P3.7
160GF



TE Part #2337233-3
TACT MICRO JB 4.8X4.8X0.55 P3.7
200GF



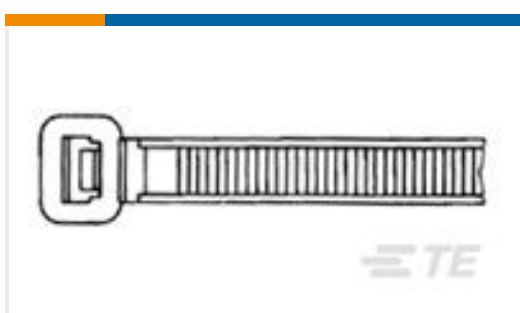
TE Part #2337233-5
TACT MICRO JB 4.8X4.8X0.55 P3.7
360GF



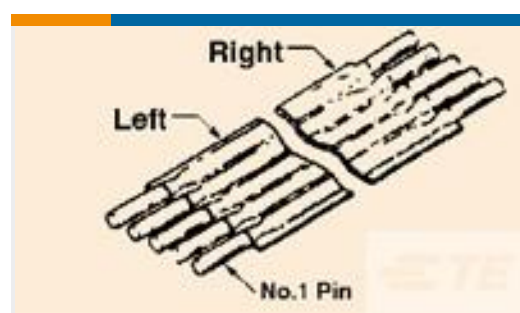
TE Part #2337242-3
TACT MINI JB 5.2X5.2X0.8 260GF



TE Part #2337243-4
TACT MINI JB 5.2X5.2X1.5 260GF



TE Part #2-160976-2
CABLE TY 250X4.8 BLACK



TE Part #6-1437166-0
FSP-22A-2

Documents

Product Drawings

[TACT MICRO JB 4.8X4.8X0.55 P3.7 260GF](#)

English

CAD Files

[3D PDF](#)

[3D](#)

[Customer View Model](#)

[ENG_CVM_CVM_2337233-4_A.2d_dxf.zip](#)



English

Customer View Model

[ENG_CVM_CVM_2337233-4_A.3d_igs.zip](#)

English

Customer View Model

[ENG_CVM_CVM_2337233-4_A.3d_stp.zip](#)

English

By downloading the CAD file I accept and agree to the [Terms and Conditions](#) of use.

Datasheets & Catalog Pages

[MCSLPT Family-Low-profile Tactile Switches](#)

English