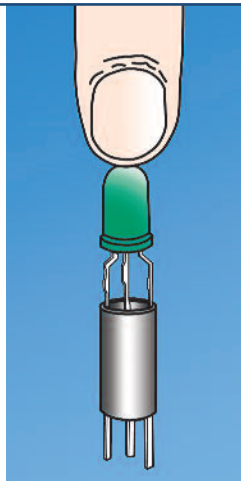
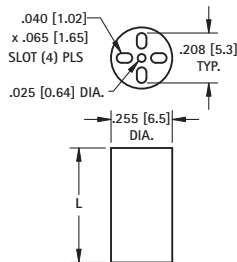


"UNIVERSAL" FOR T-1 & T-1 3/4

- Unique design separates leads and retains Tri-Lead and Bi-Lead components
- Designed for PC board mounting of Tri-Lead and Bi-Lead T-1 and T-1 3/4 LEDs
- Provides height control, lead retention and stability
- Also suitable for mounting lamps, resistors, transistors, diodes, capacitors, etc.



T1 & T-1 3/4



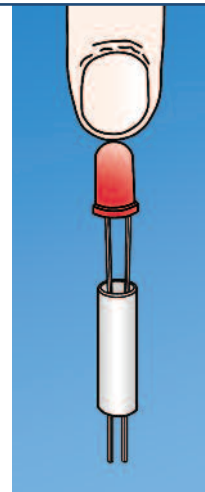
MATERIAL: Black PVC, UL Rated 94V-0

FOR T-1 and T-1 3/4			
CAT. NO.	L LENGTH	CAT. NO.	L LENGTH
8900	.120 (3.0)	8916	.400 (10.2)
8901	.140 (3.6)	8917	.420 (10.7)
8902	.160 (4.1)	8918	.440 (11.2)
8903	.180 (4.6)	8919	.450 (11.4)
8904	.200 (5.1)	8920	.460 (11.7)
8905	.220 (5.6)	8921	.480 (12.2)
8906	.240 (6.1)	8922	.500 (12.7)
8907	.250 (6.4)	8923	.550 (14.0)
8908	.260 (6.6)	8924	.600 (15.2)
8909	.280 (7.1)	8925	.650 (16.5)
8910	.300 (7.6)	8926	.700 (17.8)
8911	.320 (8.1)	8927	.750 (19.1)
8912	.340 (8.6)	8928	.800 (20.3)
8913	.350 (8.9)	8929	.850 (21.6)
8914	.360 (9.1)	8930	.900 (22.9)
8915	.380 (9.7)	8931	.925 (23.5)

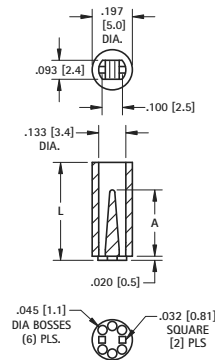
"SELF-ALIGNING" FOR BI-LEAD T-1 & T-1 3/4

KEY FEATURES

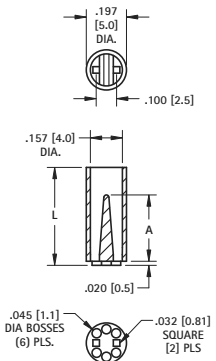
- Positive self-alignment of leads on .100 (.25) centers.
- No special tools required
- This features an internally tapered barrier which guides the leads and eliminates crimping or shorting
- The bottom bosses serve the dual purpose of heat dissipation and easy post soldering cleanup



T-1



T-1 3/4



MATERIAL: Natural Nylon, UL Rated 94V-2

T-1	T-1 3/4	L	A	T-1	T-1 3/4	L	A		
CAT. NO.	CAT. NO.	LENGTH	REF.	CAT. NO.	CAT. NO.	LENGTH	REF.		
7351	8311	.120 (3.0)	.075 (1.9)	7367	8327	.400 (10.2)	.325 (8.3)		
7352	8312	.140 (3.6)		7368	8328	.420 (10.7)			
7353	8313	.160 (4.1)		7369	8329	.440 (11.2)			
7354	8314	.180 (4.6)		7370	8330	.450 (11.4)			
7355	8315	.200 (5.1)		7371	8331	.460 (11.7)			
7356	8316	.220 (5.6)		7372	8332	.480 (12.2)			
7357	8317	.240 (6.1)		7373	8333	.500 (12.7)			
7358	8318	.250 (6.4)		.190 (4.8)	7374	8334		.550 (14.0)	.450 (11.4)
7359	8319	.260 (6.6)			7375	8335		.600 (15.2)	
7360	8320	.280 (7.1)			7376	8336		.650 (16.5)	
7361	8321	.300 (7.6)	7377		8337	.700 (17.8)			
7362	8322	.320 (8.1)	.200 (5.1)	7378	8338	.750 (19.1)	.690 (17.5)		
7363	8323	.340 (8.6)		7379	8339	.800 (20.3)			
7364	8324	.350 (8.9)		7380	8340	.850 (21.6)			
7365	8325	.360 (9.1)		7381	8341	.900 (22.9)			
7366	8326	.380 (9.7)		7382	8342	.925 (23.5)			