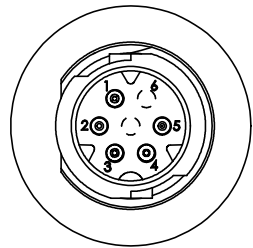
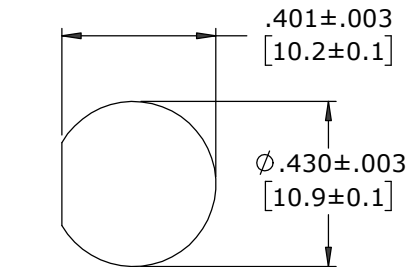


ASS'Y P/N	NO. OF CONTACTS	KEY STYLE
W17982-5PG-P-300	5 #26	A-KEY
W17982-6PG-P-300	6 #26	B-KEY
W17982-7PG-P-300	7 #26	A-KEY

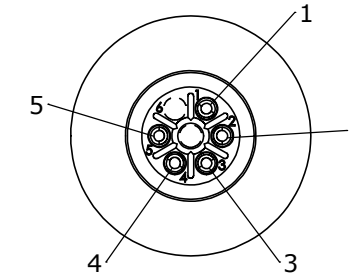
- NOTES:
- ALL PARTS TO BE BULK PACKED
  - CONTACTS INSERTED INTO CONNECTOR WITH SOLDER CUPS FACING OUTWARD RADIALLY. THE CENTER CONTACT SHOULD BE FACING BETWEEN POSITION 1 AND 6
  - ALL DIMENSIONS ARE REFERENCE EXCEPT THOSE WITH A TOLERANCE



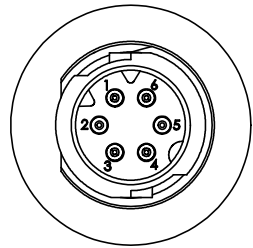
**FACE VIEW**  
W17982-5PG-P-300  
5 POSITION  
A-KEY



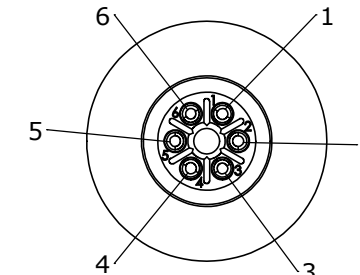
**RECCOMENDED  
PANEL CUT-OUT**



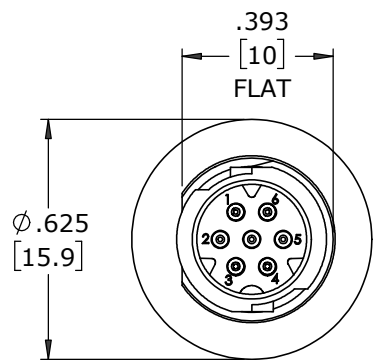
**WIRE VIEW**  
W17982-5PG-P-300



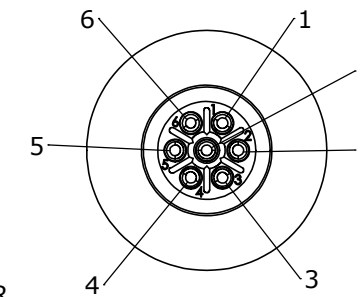
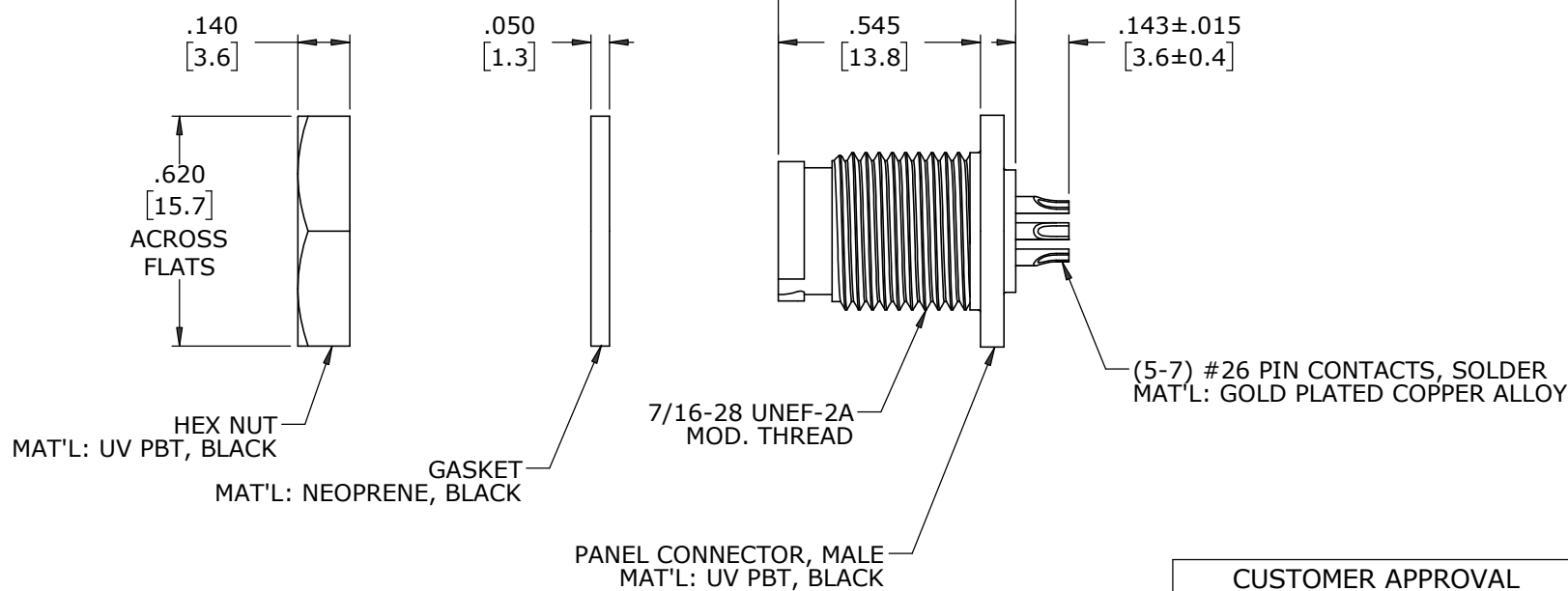
**FACE VIEW**  
W17982-6PG-P-300  
6 POSITION  
B-KEY



**WIRE VIEW**  
W17982-6PG-P-300



**FACE VIEW**  
W17982-7PG-P-300  
7 POSITION  
A-KEY



**WIRE VIEW**  
W17982-7PG-P-300

CUSTOMER PRINT

PART NUMBER: W17982-XPG-P-300

**CUSTOMER APPROVAL**

THIS DOCUMENT CONTAINS CONFIDENTIAL INFORMATION PROPRIETARY TO CONXALL CORPORATION. ANY REPRODUCTION, DISCLOSURE, OR USE OF THIS DOCUMENT /INFORMATION IS EXPRESSLY PROHIBITED UNLESS AUTHORIZED IN WRITING BY CONXALL CORPORATION.

APPROVED BY: \_\_\_\_\_  
DATE: \_\_\_\_\_

MA	08-10-20	RELEASED PER PDR 18004-2
A	JGK 8/14/19	DRAWING CREATED FOR PDR #18004
REV.	INIT.	DATE
	JGK	8/14/19
DESCRIPTION		
ALL INFORMATION ILLUSTRATED IS THE PROPERTY OF "CONXALL CORPORATION". UNAUTHORIZED DUPLICATION OR DISTRIBUTION OF THIS DOCUMENT IS PROHIBITED.		
601 E. WILDWOOD VILLA PARK, IL 60181		
TITLE: PANEL MOUNT ASSEMBLY (5-7) #26 PIN CONTACTS, SOLDER INSTA-CLICK™ MICRO-CON-X STANDARD PRODUCT		
SCALE	SIZE	SHEET
NTS	B	1 OF 1
FILE:	DIRECTORY:	PART NUMBER:
W17982-XPG-P-300	SLW	W17982-XPG-P-300
		REV A

DIMENSIONS IN BRACKETS [ ] ARE IN MILLIMETERS UNLESS INDICATED

**RoHS COMPLIANT**

CRITICAL CHARACTERISTIC FLAG PER SPEC. XXXX

# Mouser Electronics

Authorized Distributor

Click to View Pricing, Inventory, Delivery & Lifecycle Information:

## Switchcraft:

[W17982-7PG-P-300](#) [W17982-6PG-P-300](#) [W17982-6PG-P-3ES](#) [W17982-5PG-P-3ES](#) [W17982-7PG-P-3ES](#)  
[W17982-5PG-P-300](#)