

Cylindrical Type

AC;DC

2-/3-wire

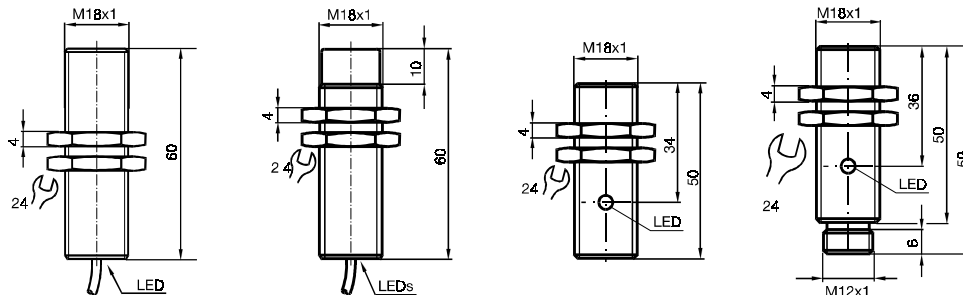
Basic series

5 mm embeddable

8 mm not embed.

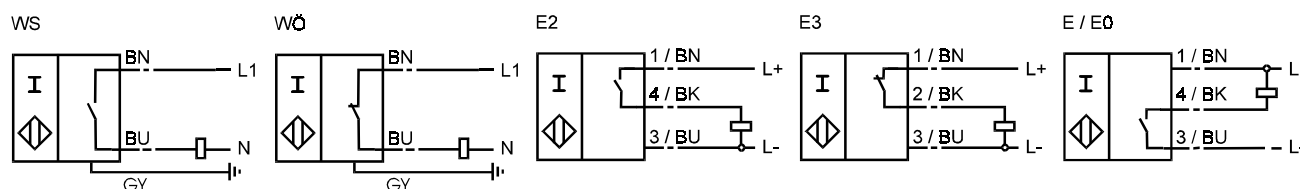
Standard series

12 mm quasi embed.



| Operating dist. s <sub>n</sub> , mounting | 5 mm, embeddable     | 8 mm, not embedd.    | 12 mm, quasi embedd.   | 12 mm, quasi embedd.   |
|---|----------------------|----------------------|------------------------|------------------------|
| PNP                                       | Make function        |                      | NEB12-18GM50-E2        | NEB12-18GM50-E2-V1     |
|   | Break function       |                      |                        | NEB12-18GM50-E3-V1     |
| NPN                                       | Make function        |                      |                        | NEB12-18GM50-E-V1      |
|   | Break function       |                      |                        |                        |
| AC  | Make function        | NBB5-18GM60-WS       | NBN8-18GM60-WS         |                        |
|   | Break function       | NBB5-18GM60-WÖ       | NBN8-18GM60-WÖ         |                        |
| Assured operat. dist. s <sub>a</sub> [mm] | 0 ...4,05            | 0 ...6,5             | 0 ...9,72              | 0 ...9,72              |
| Reduction factor                          | r <sub>V2A</sub>     | 0,62                 | 0,72                   | 0,63                   |
|   | r <sub>AI</sub>      | 0,2                  | 0,42                   | 0,26                   |
|   | r <sub>Cu</sub>      | 0,15                 | 0,4                    | 0,2                    |
| Operating voltage U <sub>B</sub> [V]      | 20 ...253            | 20 ...253            | 10 ...30               | 10 ...30               |
| Operational current I <sub>L</sub> [mA]   | 200                  | 200                  | 200                    | 200                    |
| Switching frequency [Hz]                  | 20                   | 20                   | 500                    | 500                    |
| No-load supply current [mA]               | -                    | -                    | 10                     | 10                     |
| Off-state current I <sub>R</sub> [mA]     | 1,7                  | 1,7                  | 0,1                    | 0,1                    |
| Short time c. 20ms, 0,1Hz [mA]            | 1600                 | 1600                 | -                      | -                      |
| Voltage drop [V]                          | 8                    | 8                    | 2                      | 2                      |
| Short circuit protection                  | -                    | -                    | no                     | no                     |
| Reverse polarity protection               | -                    | -                    | yes                    | yes                    |
| Output indicator                          | LED, yellow          | LED, yellow          | LED, yellow            | LED, yellow            |
| Operating temperature [°C]                | -25 ...70            | -25 ...70            | -25 ...70              | -25 ...70              |
| In compliance with                        | EN60947-5-2          | EN60947-5-2          | EN60947-5-2            | EN60947-5-2            |
| Protection to DIN 40050                   | IP 67                | IP 67                | IP 67                  | IP 67                  |
| Connection                                | 2 m, PVC-cable       | 2 m, PVC-cable       | 2 m, PVC-cable         | V1- connector          |
| Conductor cross section                   | 0,34 mm <sup>2</sup> | 0,34 mm <sup>2</sup> | 0,5 mm <sup>2</sup>    | -                      |
| Housing material                          | Nickel plated brass  | Nickel plated brass  | brass, chromium plated | brass, chromium plated |
| Sensing face                              | PBT                  | PBT                  | PBT                    | PBT                    |

Standard symbol / connection:



Inductive sensors