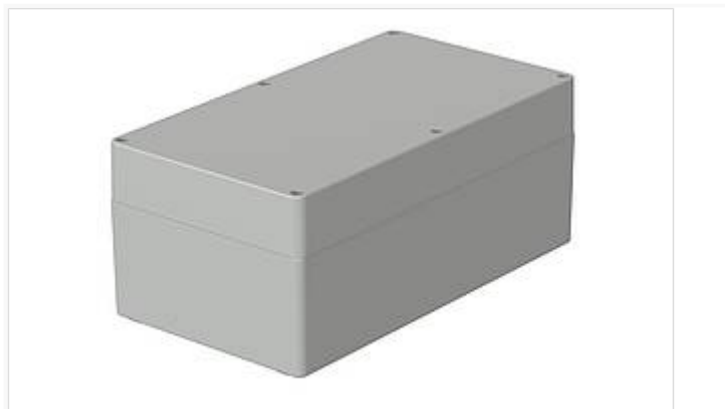


# Euromas ABS / PC / F05

Enclosure, ABS



T 255

Order no.: 03255000

\* = Available on request.

## Characteristics

Colour of enclosure group

Light grey

Protection class

IP 66

Enclosure Material

ABS, PC (UV stabilised) and selected sizes in PC UL 94 V0 (additional UL 94 V0 versions on request), seal made of CR;

V215: Vestamid, CR seal; for details see Technical Information

Scope of delivery

Lid and base, lid screws made of V2A, self-tapping screws for mounting bosses

Note

SV = version with quick-release fastener.

IP = Ingress protection acc. to DIN EN 60529

## Important!

To compensate for pressure when temperatures change and cause moisture in the enclosure, we recommend that you use a pressure compensation element.

» Additional information

## Technical documentation / Downloads

Technical drawings

3D product data in STEP format: Registration necessary

Product information

Euromas ABS PC GB.pdf (337.6 KB)

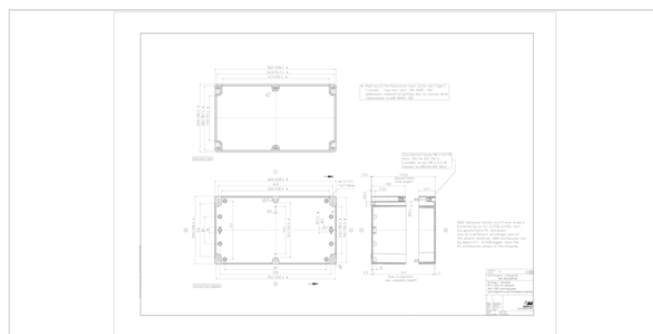
20.09.2019

## Dimensions

Dimensions

360 x 200 x 149.5 mm

Product drawing



Product drawing in PDF format: 03255000 T-255.pdf (119.8 KB)  
Product drawing in DXF format: 03255000 T-255.dxf (841.9 KB)  
Drawing for mechanical processing: 03255000 T-255-G.dxf (400.2 KB)

Milling contours are shown here as a DXF file. (Sub D, USB, HDMI, cable glands, ...)

## Works Test Certificates

670 WPZ-Euomas-PC DE.pdf (197.3 KB)  
670 WPZ-Euomas-PC EN.pdf (191.1 KB)

## Matching accessories

---



Mounting plates, laminated paper (Pertinax), galvanised steel for version 260

22001600 M For M/T 255



Rubber feet, plug-in

22003300 F For M/T 208-260



DIN rails DIN EN 60715 G 32, galvanised steel

22002950 TS 32 For M/T 255



DIN rails DIN EN 60715 TH 35, galvanised steel

22002951 TS 35 For M/T 255



Set of hinges

22006000 SchM



Screws (SHR) and distance bolts (DIBLZ) for mounting bosses in plastic enclosures

59006110 SHR Z B6,3x9,5 SD = 7.0 / ND = 5.5 / KD = 12.5



Threaded inserts, brass, for mounting bosses in plastic enclosures

59002810 DODGE M3x6,5 ND = 4.0 x 6.5  
59002820 DODGE M4x9,5 ND = 5.4 x 9.5

