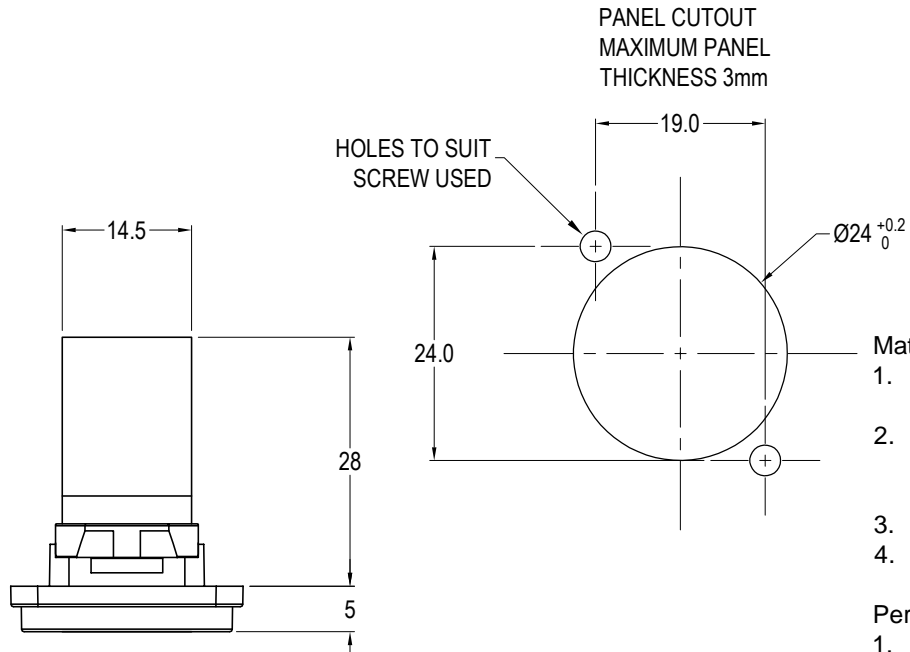


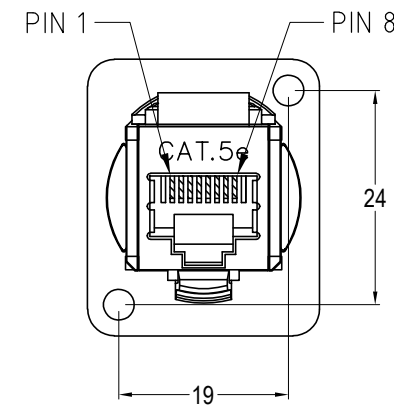
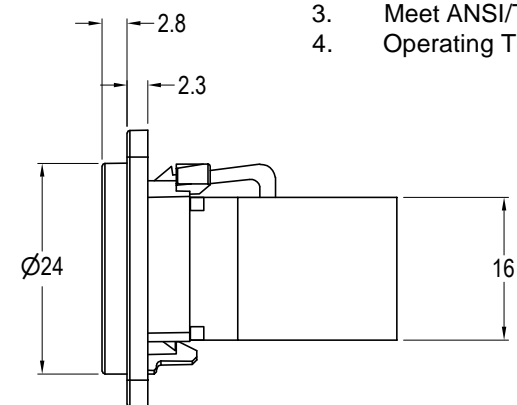
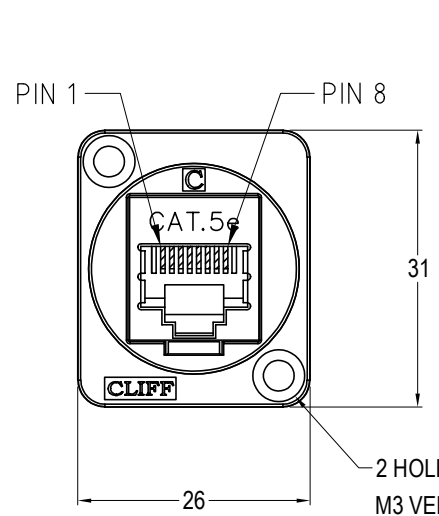
ISS.	AMEND	DATE
1	1st DRAWN	14/12/15
2	ADD M3 VARIANT	16/07/18
3	ADD MIN MAX TEMP	30/06/20



- Material:**
1. RJ45 In-Line Coupler: PC/ABS, UL 94V-0, Black colour
 2. RJ45 In-Line Coupler Contact: Phosphor Bronze, 3-50 micro inches gold plating over nickel plate.
 3. PCB: FR4, UL 94V-0
 4. Frame: Black Nickel plated zinc diecast

- Performance:**
1. T568A & T568B wiring.
 2. Meet ISO/IEC 11801 and EN50173
 3. Meet ANSI/TIA/EIA 568B.2
 4. Operating Temperatures: Min -10°C Max +70°C

VARIANTS	
PART No.	HOLE DETAILS
CP30220SMB	HOLE $\varnothing 3.50$ x CSK 82° x $\varnothing 5.85$
CP30220SM3B	M3 HOLES



RoHS
COMPLIANT

TOLERANCE

NO DEC. PLACE \pm

1 DEC. PLACE \pm

2 DEC. PLACE \pm

HOLE $\varnothing \pm$

ANGLES \pm

UNLESS OTHERWISE STATED