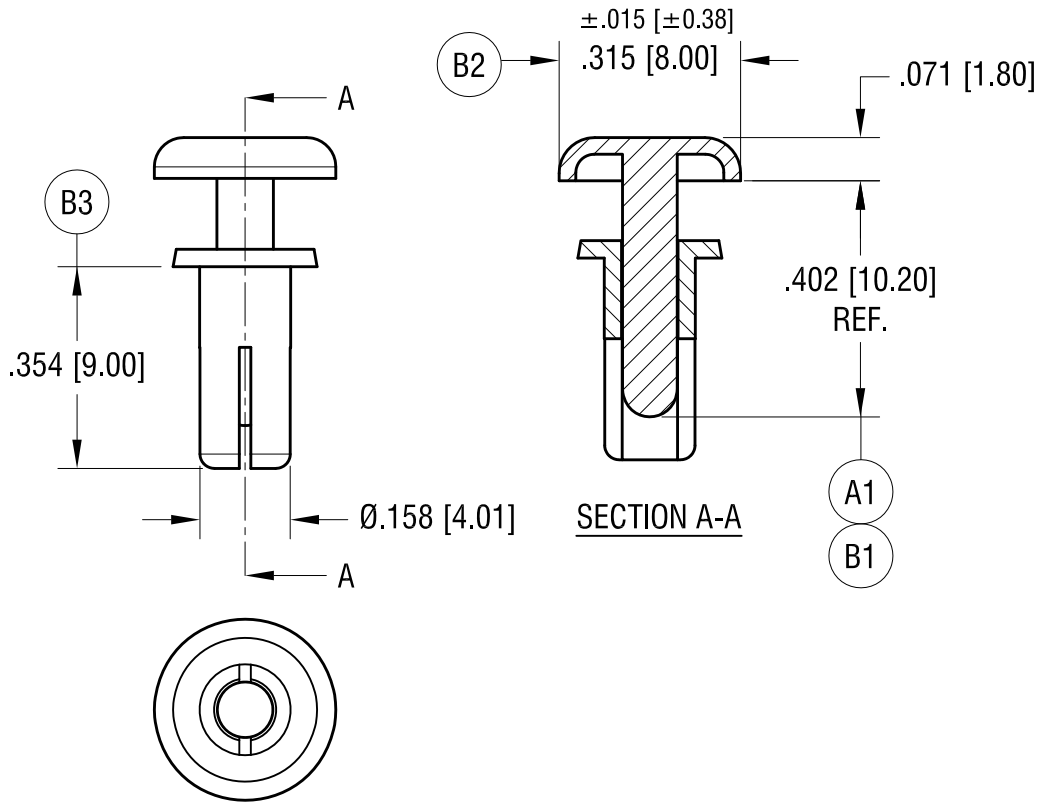
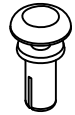


THIS DOCUMENT IS THE PROPERTY OF  
KEYSTONE ELECTRONICS CORP. AND  
SHALL NOT BE REPRODUCED, DISTRIBUTED  
OR USED AS A BASIS FOR MANUFACTURE  
WITHOUT PRIOR WRITTEN PERMISSION  
FROM KEYSTONE ELECTRONICS CORP.

ACTUAL SIZE



NOTES:

- RECOMMENDED MOUNTING HOLE:  
.163 [4.14] DIA.
- CHASSIS THICKNESS:  
.256 [6.50] TO .295 [7.50]

(B1) WAS  $.410 \pm .010$   
(B2) WAS  $.315 \pm .010$ , (B3) WAS  $.350$   
CHANGE AS PER ECN 21-098

(A1) WAS  $.430$   
CHANGE AS PER ECN 21-069

DATE	DESCRIPTION	REV.
8.27.21	CHANGE AS PER ECN 21-098	B
7.15.21	CHANGE AS PER ECN 21-069	A

<b>KEYSTONE ELECTRONICS CORP.</b>			
www.keyelco.com • NEW HYDE PARK, NY 11040 • Tel (516) 328-7500			
PART NAME		SNAP RIVET	
MATERIAL			
NYLON 6/6 UL 94V-2 (BLACK COLOR)			
FINISH		DRN BY	DATE
NONE		BOONE	9.29.06
		APP'D	SCALE
		RH	3X
TOLERANCES		INCH	[MM]
DECIMAL		$\pm .010$	$[\pm 0.25]$
ANGULAR		$\pm 1^\circ$	
UNLESS OTHERWISE SPECIFIED			
CODE	DWG NO.		
C	<b>3449</b>		