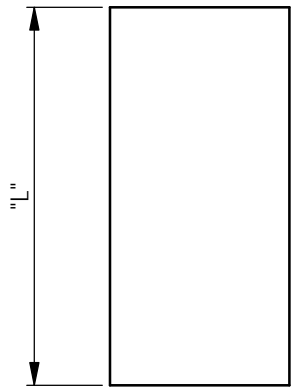
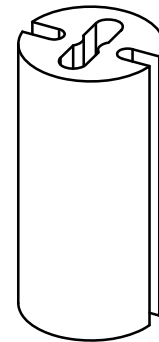
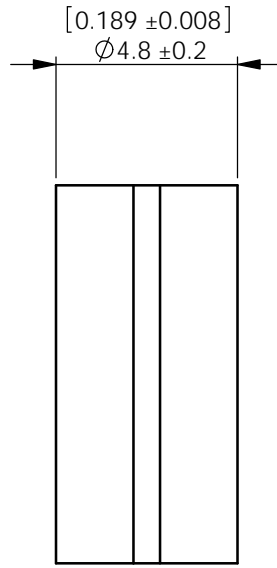
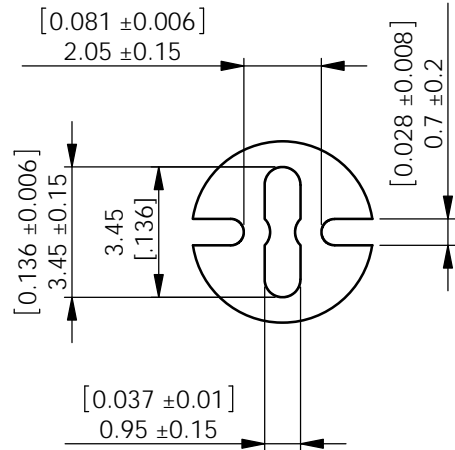


AVAILABLE BY SPECIAL ORDER NAFTA REGION ONLY

REV.	MODIFICATION.	DATE	DRN
01	NEW DWG	25/05/01	JPM
02	SCN04-093	23/09/04	OW
03	SCN04-096	01/10/04	OW
04	SCN04-100	14/10/04	OW
05	ECN05-021	26/01/05	OW
06	ECN07-136	20/08/06	SF
07	CO-2010556	10/02/09	OW
08	CO-2010858	01/12/09	MT
09	CO-2011241	06/02/12	SF

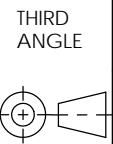


ALTERNATE UNITS FOR REFERENCE ONLY

INFORMATION CONTAINED IN THIS DOCUMENT IS CONFIDENTIAL TO RICHCO INTERNATIONAL Co. Ltd. AND MAY NOT BE DISCLOSED OR REPRODUCED IN WHOLE OR PART WITHOUT THEIR WRITTEN CONSENT.

RICHCO, INC.
WWW.RICHCO-INC.COM

ALL DIMENSIONS IN mm
GENERAL TOLERANCES ±0.25
UNLESS OTHERWISE STATED
1 DECIMAL PLACE ±
2 DECIMAL PLACES ±
ANGULAR ±1°



- NOTES:
1) FOR USE WITH 3mm, T-1 LEDs.
2) PARTS AVAILABLE IN 1mm INCREMENTS
3) SPECIAL LENGTHS AVAILABLE BY SPECIAL ORDER

MATERIAL: PVC(RMS-388)		COLOUR: BLACK	
DESCRIPTION: LED MOUNTS		PART No: LEDM-2-XX	
DRG No: 786-9021	NPR No:		SHEET SIZE A4
DRN OW	DATE 14/10/04	CHKD NJB	DATE 14/10/04
SCALE NTS	SHEET No. 1 OF 1		

PART No.	LENGTH
LEDM-2-02 - LEDM-2-30	2.0mm - 30mm

Mouser Electronics

Authorized Distributor

Click to View Pricing, Inventory, Delivery & Lifecycle Information:

[Essentra:](#)

[LEDM-2-08](#) [LEDM-2-02](#) [LEDM-2-03](#) [LEDM-2-04](#) [LEDM-2-06](#) [LEDM-2-09](#) [LEDM-2-10](#) [LEDM-2-13](#) [LEDM-2-21](#)